

## Storm Kettle

1. Find a safe place to use a storm kettle. Consider the ground and surrounding environment.

2. Find a selection of suitable fuel for lighting a storm kettle.

3. IMPORTANT: What safety checks do you need to make before lighting the fire?

4. Light and boil the storm kettle. How do you know when the water is boiling?

5. Demonstrate how to safely lift and pour the water into a cup.

6. Demonstrate how to put out the fire and dispose of the ashes safely.

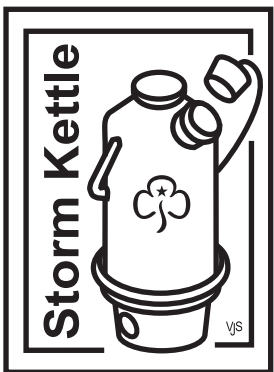
## Using the Kelly Kettle

### IMPORTANT

Make sure the kettle is on a flat surface and that it won't tip over.  
NEVER boil with the cork in.



**Always tie back long hair when firelighting!**



## Storm Kettle

1. Find a safe place to use a storm kettle. Consider the ground and surrounding environment.

2. Find a selection of suitable fuel for lighting a storm kettle.

3. IMPORTANT: What safety checks do you need to make before lighting the fire?

4. Light and boil the storm kettle. How do you know when the water is boiling?

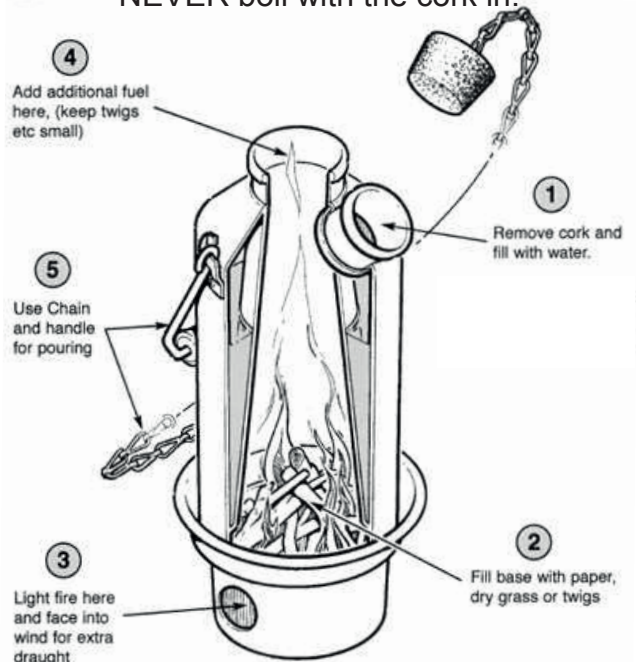
5. Demonstrate how to safely lift and pour the water into a cup.

6. Demonstrate how to put out the fire and dispose of the ashes safely.

## Using the Kelly Kettle

### IMPORTANT

Make sure the kettle is on a flat surface and that it won't tip over.  
NEVER boil with the cork in.



**Always tie back long hair when firelighting!**