

IIGQ Concepts

S2000 Hardtop Hardware Installation Manual



THANK YOU FOR YOUR PURCHASE OF OUR S2000 HARDTOP HARDWARE KIT. OUR HARDWARE KIT HAS BEEN DEVELOPED AND EXTENSIVELY TESTED WITH PERFORMANCE, ADJUSTABILITY, QUALITY AND RELIABILITY IN MIND. THIS HARDWARE KIT IS UNIQUE AND UNLIKE ANY OTHER AS IT WAS CREATED FROM THE BOTTOM UP. WE TRULY THANK YOU FOR YOUR PURCHASE AND RECOMMEND THAT YOU FREQUENT OUR WEBSITE IIGQCONCEPTS.COM FOR ADDITIONAL UPGRADES AND VARIOUS PRODUCT OFFERINGS. ENJOY YOUR IIGQ CONCEPTS HARDTOP HARDWARE KIT.

Contents

PLEASE INSPECT YOUR PACKAGE PRIOR TO INSTALLATION TO VERIFY THAT ALL ITEMS BELOW ARE INCLUDED. WE RECOMMEND THAT YOU READ THE ENTIRE CONTENTS PRIOR TO BEGINNING INSTALLATION. WHO KNOWS, THERE MAY BE A NEAT TREAT INSIDE ;)

PLEASE ALSO NOTE THAT OUR INSTALLATION GUIDE DOES NOT INSTRUCT HOW TO INSTALL THE REAR WINDOW AND WINDOW SEAL. WE RECOMMEND THAT YOU SEEK PROFESSIONAL INSTALLATION FROM A QUALIFIED GLASS INSTALLER. WE CAN NOT BE HELD RESPONSIBLE FOR ANY FAILURES INCURRED AS A RESULT OF IMPROPER INSTALLATION.

<ul style="list-style-type: none"> • DRIVER/PASSENGER BRACKET (4 PIECES) 	<ul style="list-style-type: none"> • REAR HARDTOP WINDOW (1 PIECE) 	<ul style="list-style-type: none"> • 10MMX20MM HEX BOLT (8 PIECES)
<ul style="list-style-type: none"> • DRIVER/PASSENGER WINDOW SEAL (2 PIECES) 	<ul style="list-style-type: none"> • REAR WINDOW SEAL (1 PIECE) 	<ul style="list-style-type: none"> • 13MMX20MM HEX BOLT (4 PIECES)
<ul style="list-style-type: none"> • LOWER HARDTOP SEAL (1 PIECE) 	<ul style="list-style-type: none"> • TRUNK SPACER (4 PIECES) 	<ul style="list-style-type: none"> • 13MMX25MM HEX BOLT (2 PIECES)

Tools

<ul style="list-style-type: none"> • PHILLIPS HEAD SCREWDRIVER 	<ul style="list-style-type: none"> • 1/4 OR 3/8" SOCKET WRENCH 	<ul style="list-style-type: none"> • 3-4" DEEP SOCKET EXTENSION
<ul style="list-style-type: none"> • 10MM SOCKET 	<ul style="list-style-type: none"> • 13MM SOCKET 	<ul style="list-style-type: none"> • SHARP RAZOR BLADE

Additional Optional Items

<ul style="list-style-type: none"> • CLEAN TOWEL, SPONGE OR PAPER TOWEL 	<ul style="list-style-type: none"> • RUBBING ALCOHOL OR MILD DEGREASER 	<ul style="list-style-type: none"> • BLACK SILICONE ADHESIVE
--	---	---

Instructions

- 1. AFTER INSPECTING CONTENTS, CLEAN THE SEAL APPLICATION AREAS OF THE HARDTOP WITH RUBBING ALCOHOL OR A LIGHT DILUTED DEGREASER. THE APPLICATION AREAS INCLUDE THE DRIVER AND PASSENGER WINDOW AREAS AS WELL AS THE FLAT SECTION THAT BEGINS JUST BEHIND THE PASSENGER SIDE WINDOW AND ENDS ON THE OPPOSITE SIDE. THIS IS ILLUSTRATED IN THE PHOTO BELOW. PLEASE ALSO ENSURE THAT YOUR SOFT TOP IS IN THE DOWNWARD POSITION.**



- 2. REMOVE ALL FASTENERS THAT ARE PRE-INSTALLED INTO THE HARDTOP AS THESE PIECES WILL NOT BE UTILIZED.**
- 3. REMOVE THE SOFT TOP LATCHES WITH A PHILLIPS HEAD SCREWDRIVER AND CAREFULLY INSTALL ONTO THE HARDTOP WITH THE FACTORY SCREWS.**

- 4. REMOVE THE DRIVER AND PASSENGER SIDE DOOR SKIRTS. TO REMOVE, SIMPLY PRY AND PULL.**



- 5. LOOSEN PLASTIC PANEL BEHIND SEAT BY REMOVING THE SCREW PICTURED BELOW. REMOVE THE BRUSHES BEHIND THIS PANEL WITH A PHILLIPS SCREWDRIVER.**



6. REMOVE THE SCREWS FROM THE PLASTIC PANEL BEHIND THE SEAT. THE SCREWS CAN BE LOCATED BY PRYING OPEN THE PLASTIC HOOKS. THEY MAY BE REMOVED WITH EITHER A PHILLIPS HEAD SCREWDRIVER OR SOCKET.

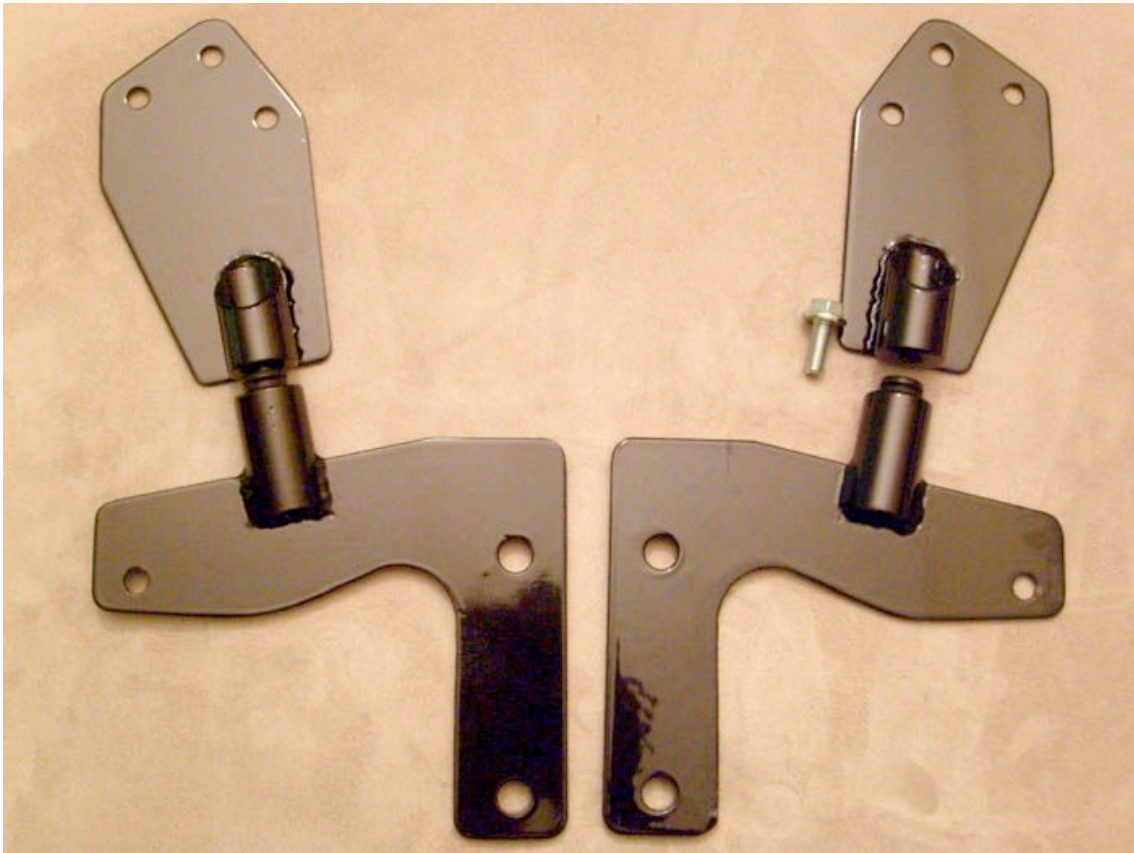


7. WITH THE PANELS REMOVED, YOU CAN NOW BEGIN TO WORK ON THE HARDTOP. INSTALL THE LOWER HARDTOP SEAL AS ILLUSTRATED BELOW. BE SURE THAT WHEN BEGINNING YOU ALLOW THE SEAL TO OVERLAP THE EDGE OF THE HARDTOP AS ILLUSTRATED. LATER ON, YOU WILL CUT A PORTION OF THE LOWER HARDTOP SEAL SO THAT THE WINDOW SEAL SITS FLUSH AGAINST YOUR HARDTOP.

NOTE: THE LOWER HARDTOP SEAL SHOULD BE APPLIED TO THE HORIZONTAL UNDERSIDE OF THE HARDTOP AS THIS WILL ALLOW THE TOP TO SIT DIRECTLY UPON THE WEATHER SEAL WHICH BEGINS JUST BEHIND THE PASSENGER WINDOW AND ENDS ON THE OPPOSITE SIDE.



8. NOW AFFIX ONLY THE UPPER BRACKETS TO THEIR RESPECTIVE SIDES OF THE HARDTOP WITH THE 10MMX20MM BOLTS PROVIDED. THE DRIVER'S SIDE UPPER AND LOWER BRACKET IS IN THE PHOTO BELOW ON THE LEFT AND THE PASSENGER SIDE COMPONENTS ON THE RIGHT.



9. IT IS NOW TIME TO INSTALL THE LOWER BRACKET. THE LOWER BRACKET IS AFFIXED TO THE VEHICLE ITSELF AND IS LOCATED BEHIND THE PANEL THAT WAS REMOVED IN STEP #5. THE LOWER BRACKET IS SECURED WITH TWO M8 13MM (HEAD) X 20MM (LENGTH) SCREWS AS WELL AS ONE 10MM X 20MM SCREW. PLEASE REFER TO THE ILLUSTRATION BELOW FOR INSTALLATION.



NOTE: AT THIS POINT, YOUR HARDTOP SHOULD HAVE ALL HARDWARE INSTALLED WITH THE EXCEPTION OF THE WINDOW SEALS. YOUR VEHICLE SHOULD HAVE THE LOWER BRACKETS SECURELY INSTALLED.

YOU ARE NOW PREPARED TO BEGIN THE FINAL STEPS OF YOUR HARDTOP INSTALLATION.

10. WITH A PARTNER, PLEASE LIFT AND PLACE THE HARDTOP ONTO YOUR S2000.

11. ALIGN THE UPPER HARDTOP BRACKET WITH THE LOWER BRACKET AND INSERT THE M8 13MM X 25MM SCREW INTO THE UPPER BRACKET HOLE. THE SCREW INSERTION HOLE IS ILLUSTRATED BELOW.
12. WITH A 12MM DEEP SOCKET, THREAD THE LOCKING SCREW INTO THE LOWER BRACKET **Do NOT FULLY TIGHTEN AT THIS TIME!**



NOTE: IN THE PREVIOUS STEP, THE UPPER BRACKETS SHOULD NOT BE TIGHTENED IN ORDER TO PREPARE FOR PROPER INSTALLATION OF THE WINDOW SEALS.

NOTE: PRIOR TO THE INSTALLATION OF THE DRIVER AND PASSENGER WINDOW SEALS, PLEASE ENSURE THAT YOUR WINDOWS ARE IN THE UPRIGHT POSITION, YOU ARE IN THE VEHICLE, THE DOORS COMPLETELY SHUT, AND THE FRONT LATCHES LATCHED.

13. START AT THE BOTTOM AS ILLUSTRATED AND SQUEEZE THE SEAL WITH BOTH YOUR INDEX FINGER AND THUMB. APPLYING DOWNWARD FORCE TO SECURE THE SEAL INTO THE POCKET, SIMULTANEOUSLY AND FIRMLY PRESS THE SEAL AGAINST THE WINDOW AND SECURE TO THE HARDTOP. PROPERLY DOING SO WILL PREVENT ANY GAPS BETWEEN THE WINDOW AND SEAL.



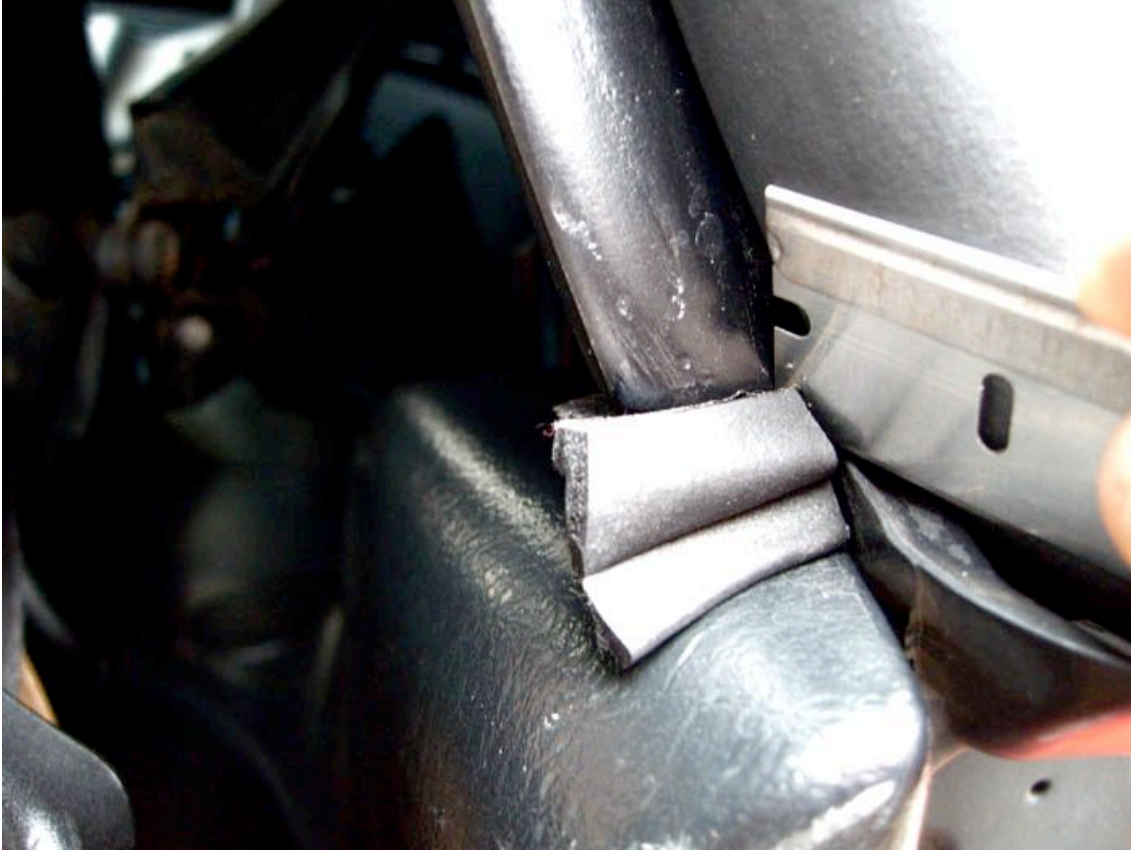
- 14. ONCE THE SEAL HAS BEEN FULLY APPLIED, PLACE THE FORMED EDGE INTO THE WATER CHANNEL (AS ILLUSTRATED BELOW) AT THE FRONT OF THE WINDSHIELD. WHEN INSTALLED PROPERLY YOU WILL HAVE A WATER TIGHT SEAL AT ALL EDGES.**



- 15. TO TEST FIT AND ENSURE THAT YOUR SEAL HAS BEEN INSTALLED PROPERLY, ROLL THE WINDOWS UP AND DOWN AND SHUT THE DOOR. ONCE THE DOOR HAS BEEN SHUT FOR A FEW MINUTES, LINES WILL APPEAR AS IN THE ILLUSTRATION BELOW. THESE LINES SIGNIFY A TIGHT WATERPROOF SEAL.**



16. EARLIER, WE MENTIONED OVERLAPPING THE LOWER SEAL, NOW IS THE TIME TO CUT THIS SEAL SO THAT THE DRIVER/PASSENGER SEALS CAN BE FULLY AFFIXED TO THE HARDTOP. TO DO SO, SIMPLY CUT ALONG THE LOWER SEAL WHERE THE WINDOW SEAL ENDS AS ILLUSTRATED. YOU WILL THEN NEED TO PULL THE SEAL AWAY FROM THE HARDTOP TO CUT THE LOWER SEAL THAT IS JUST BEHIND IT. AFTER THIS IS COMPLETED, CUT THE LOWER SEAL ON THE OPPOSITE SIDE OF THE WINDOW SEAL THEN REMOVE AND DISCARD THE TRIMMED PIECE.



17. WITH STEP #16 COMPLETE, YOU MAY NOW FULLY TIGHTEN THE REAR BRACKETS. THE BRACKETS SHOULD CONTACT AND SLIGHTLY COMPRESS THE BLACK GROMMET.
18. REVIEW THE SEAL INSTALLATION TO CHECK FOR ANY GAPS NEAR THE REAR OF THE WINDOW. IF YOU OBSERVE ANY GAPS (WHICH IF ANY WILL BE MINOR) SIMPLY SEAL THEM WITH BLACK SILICONE SEALANT.
19. REINSTALL ALL INTERIOR PANELS.

20. INSTALL THE TRUNK SPACERS ONTO THE TRUNK ARM AS ILLUSTRATED BELOW. TRUNK SPACERS PREVENTS YOUR TRUNK FROM CONTACTING (AND POTENTIALLY DAMAGING) THE HARDTOP.



NOTE: UNLESS GREAT FORCE IS EXERTED WHEN OPENING THE TRUNK, THE CLEARANCE PROVIDED BY THE SPACERS IS SUFFICIENT AND WILL PROTECT YOUR HARDTOP FROM ANY TRUNK DAMAGE.



21. FINALLY ADMIRE A JOB WELL DONE, CONGRATULATIONS!



IF YOU HAVE READ THIS GUIDE IN ADVANCE, WE WOULD LIKE TO REWARD YOU FOR DOING SO WITH A NEAT TRICK. IF YOU, LIKE MANY OWNERS HAVE YOUR FACTORY SOFT TOP COVER AND DO NOT EVER UTILIZE THIS PIECE, WE HAVE DEVISED A GREAT PAIN-FREE WAY TO PUT IT TO USE WITHOUT MODIFICATION.

AFTER REMOVING YOUR INTERIOR PANEL PIECES, PLACE THE SOFT TOP COVER OVER YOUR SOFT-TOP. PLUG THE BUTTONS ON THE REAR OF THE SOFT TOP COVER ONTO YOUR VEHICLE. YOU WILL PROCEED WITH STEP #10 AS NORMAL. AT THE CONCLUSION OF THE HARDTOP INSTALLATION, SIMPLY FOLD THE ENDS OF THE SOFT TOP COVER AND PLACE THEM OUT OF THE WAY OF THE SEATBELTS. WITH A BIT OF MANEUVERING YOU WILL HAVE A GREAT LOOK WITHOUT THE SIGHT OF YOUR SOFT-TOP!



AGAIN, WE THANK YOU FOR PURCHASING OUR HARDWARE KIT AND FOR CHOOSING IIGQ CONCEPTS.