

“Mock Hairpin Doily” © 2011 all rights reserved.

By Sherry Pence

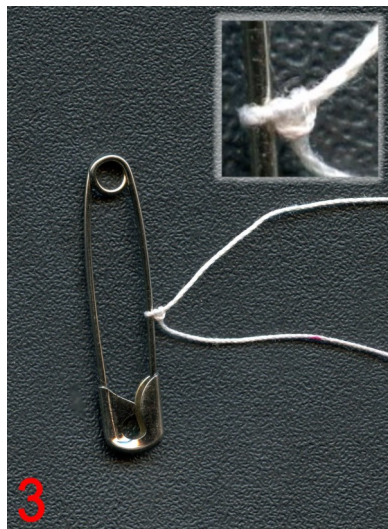
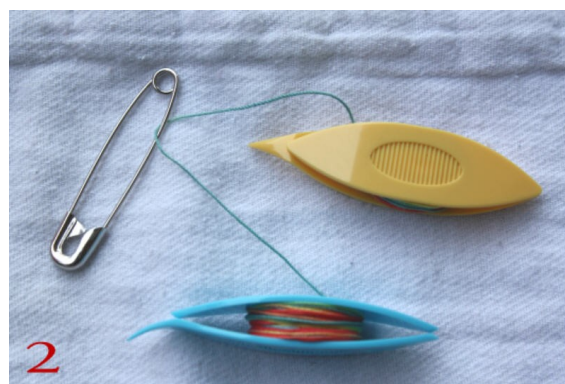
This pattern is adapted from Sandra Hameed's hairpin lace pattern:

<http://www.georgiaseitz.com/classes2/hp/hameed.html>

Using Ruth Perry's **Tatted Mock Hair Pin Lace (TMHPL)** technique.



For this project you will need two large picot gauges. I like to use credit cards. You will need two continuously wound tating shuttles with Size 20 tatting thread, and a safety pin or paper clip.

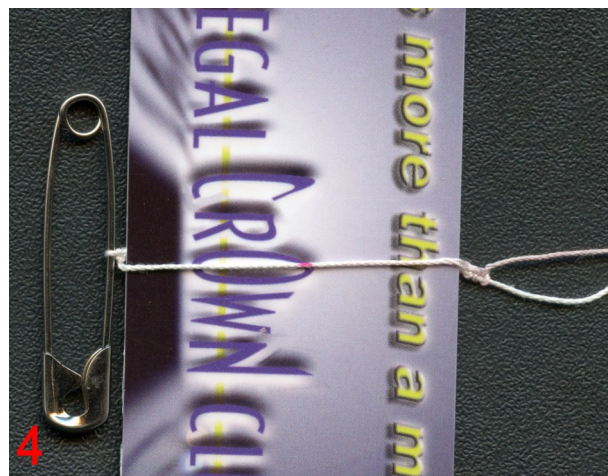


1.) Start with two shuttles continuously wound.

2.) Use a safety pin or paper clip to make a starting picot.

3.) Start with an unflipped stitch (facing downward).

4.) Use a picot gauge the width of 1 1/2". Your first three stitches will be unflipped and will look like this: 1p2

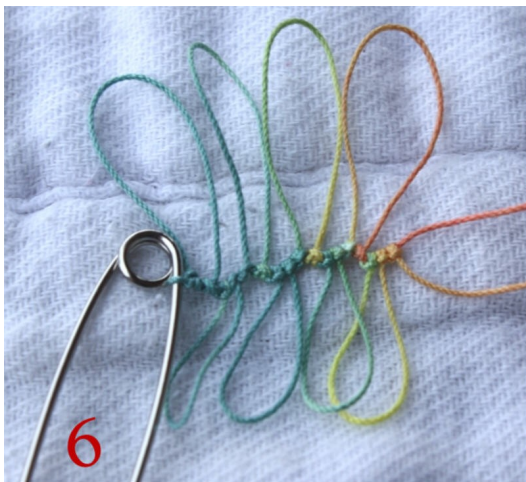




5.) Use the large (credit card) picot gauge measuring 2 1/8" to do the "UP" picot. This will be a flipped stitch, and will look like this: p1

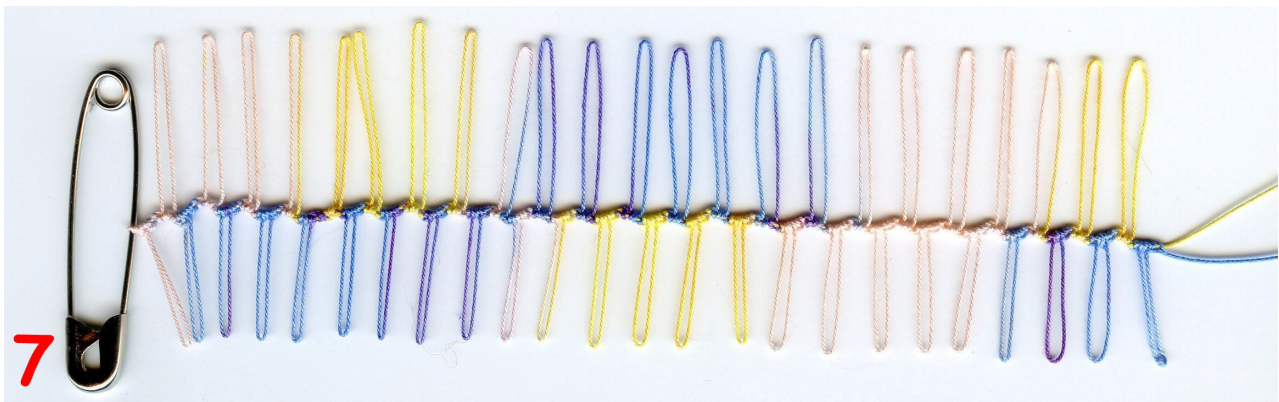
Notice the direction of the stitches.

3 down, 1 up



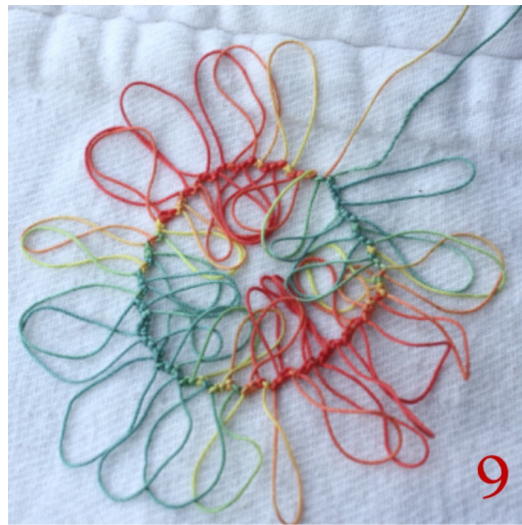
6.) You will continue this pattern until you have 24 down picots and 23 up picots.

6.1) If you look closely at the enlarged photo you will see that your stitches form a nice zigzag pattern consisting of 3 downward facing (un-flipped) stitches and 1 upward facing (flipped) stitch.



To recap you will do 1p2(unflipped; downward),p1(flipped;upward)

Do this until you have 24 downward picots and 23 upward picots.



8.) Attach to the starting picot. Make sure the smaller picots face inward.

9.) You will climb out with a mock picot the same length as the other large picots.



10.) You can take this opportunity to string a long length of thread through the inner picots.

11.) and tie off.



12.) Climb out with a mock picot the same length as the long picots.

Tat a split ring of 6p8/6p8



13.) Ch 6p6



14.) Reverse Work .

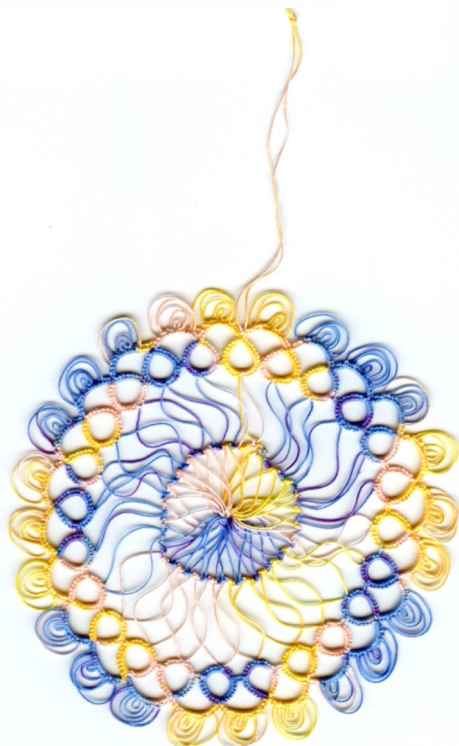
Ring of 8+(p of prev r) 6+(next long picot) 6p8
cl. RW

Ch 6p6 RW

Work your way around until you have a total
of 24 rings.



To finish you can either hide
the ends or leave them to hang
as an ornament.



Double picots were used on
the outside of this doily to
further imitate the hairpin lace
look.

Customer Support: LadyShuttleMaker@Hotmail.Com

Blog: WWW.LadyShuttleMaker.blogspot.com

Tatting Shop: WWW.LadyShuttleMaker.Etsy.Com