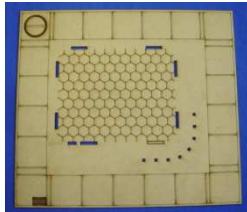


# BP laser

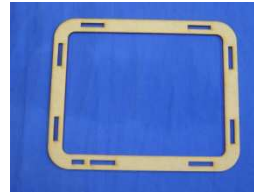
Bolaser.com

## Assembly Instructions for laser Cut Grill

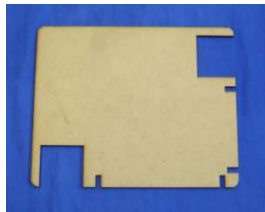
Contents: (Part Count this kit 38)



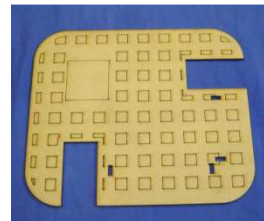
Sidewalk x1



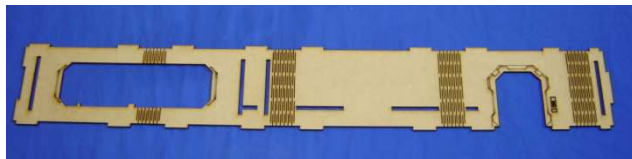
Top Plate x1



Spacer Plate x1



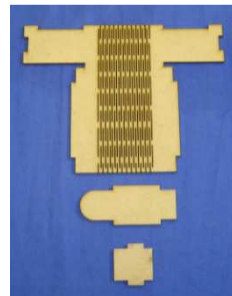
Roof x1



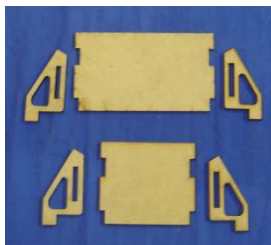
Wall x1



Worktop and  
Counter x1



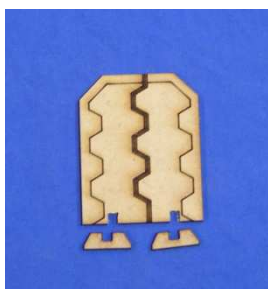
Bulkhead x2  
Bulkhead Top x2  
Bulkhead rear x2



Grill sign Large x1  
Grill Sign Small x1  
Sign Supports x4



Stool Seats x8  
Stool Bases x8



Door x1  
Door Supports x2

## Assembly Instructions:

1. We recommend using PVA (or white) glue.

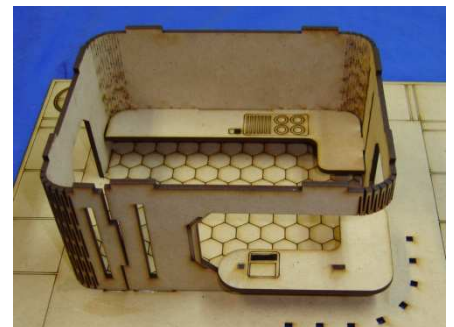
Glue along rear edge and tabs of **Worktop** and insert into corresponding locating slots on rear of **Wall**.



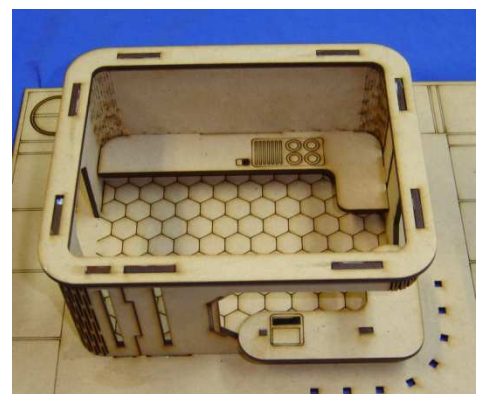
2. Glue bottom edge of **Wall** and insert into locating slots on **Walkway**. Serving opening of **Wall** should face the semi-circular row of square holes for **Stools**.



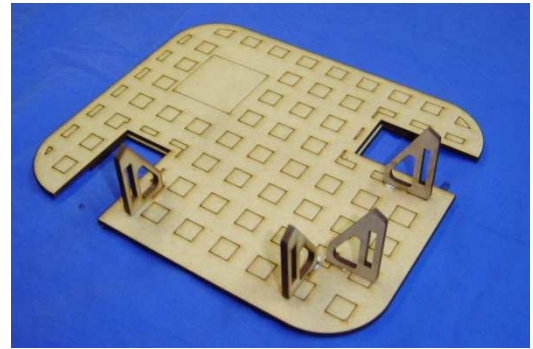
3. Apply a small amount of glue to the top of the Serving opening in **Wall**, with the two locating lugs for **Counter**.



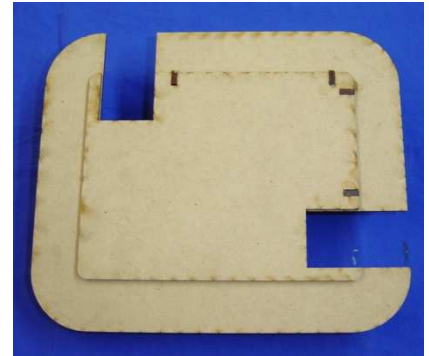
4. Apply a small amount of glue to the top of wall. Aligning locating lugs on **Wall** with **Top Plate**.



5. Insert four **Sign Supports** into corresponding location holes on **Roof**.



6. Turn **Roof** over and glue **Spacer Plate** under roof (non detailed side), using **Sign Support** lugs and **Bulkhead** openings to locate.



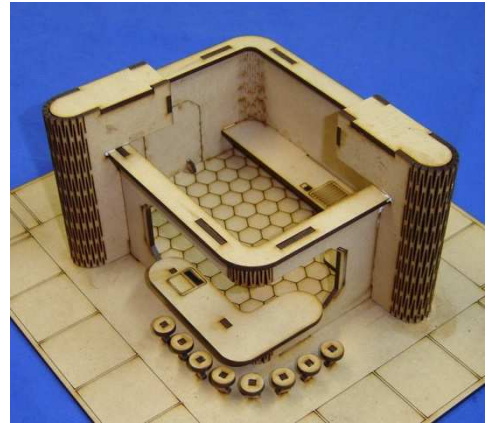
7. Using a small amount of glue. Glue **Bulkhead Top** to upper part of **Bulkhead**. Tip: Hold or secure with low tack tape or rubber bands until glue is dry. Repeat on other **Bulkhead**.



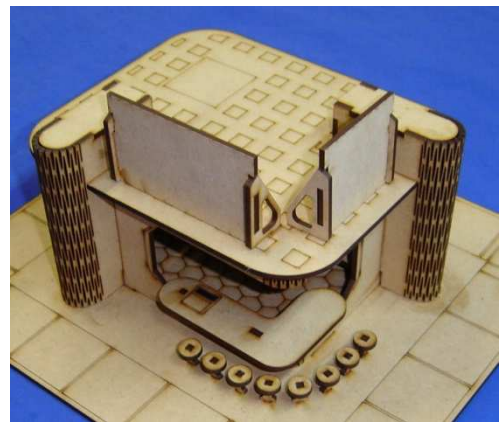
8. Glue **Bulkhead Rear** to **Bulkhead** as shown. Tip: Hold or secure with low tack tape or rubber bands until glue is dry. Repeat on other **Bulkhead**.



9. Glue **Bulkheads** into position on **Wall** and **Top Plate** using locating lugs and holes as shown.



10. Insert **Grill Sign Large** and **Grill Sign Small** into corresponding holes in **Sign Supports** as shown. Glue **Large and Small Grill Signs** into **Sign Supports** once decorated. Place **Roof Assembly** onto **Top Plate** as shown. DO NOT GLUE



11. Glue **Stool Seats** into corresponding lug on **Stool Bases**. Glue into small holes in **Walkway** as shown in previous photo. Tip: Paint and decorate **Stools** prior to gluing into **Walkway** holes



12. Glue **Door Supports** into **Door** as shown.



13. You may like to consider placing a **Cooling Tower** on the **Roof** as shown.

