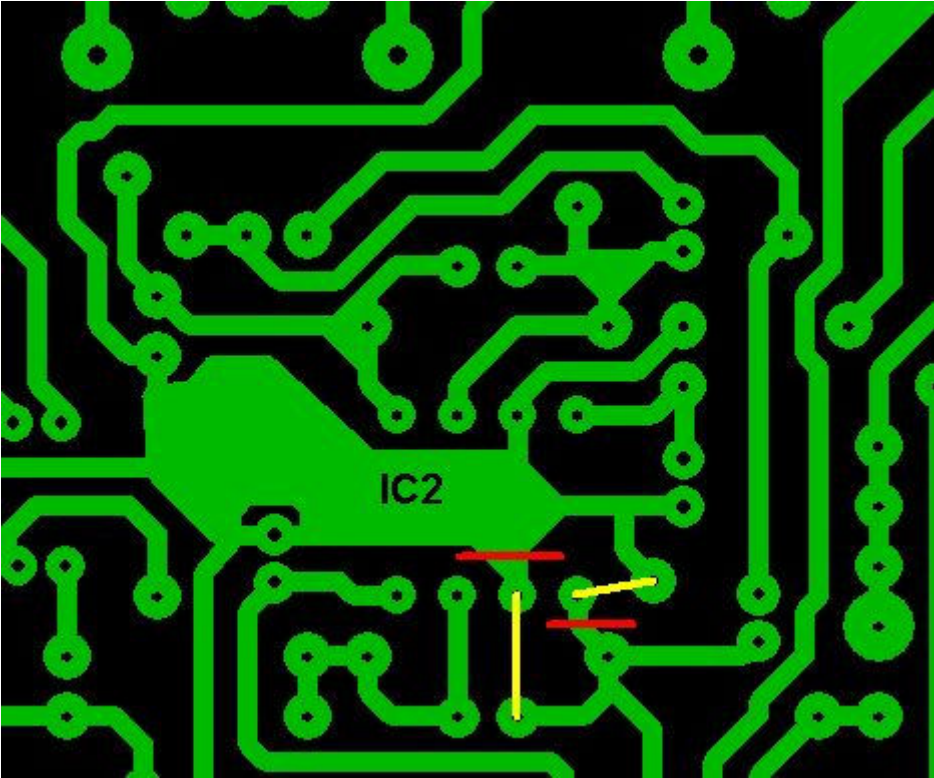
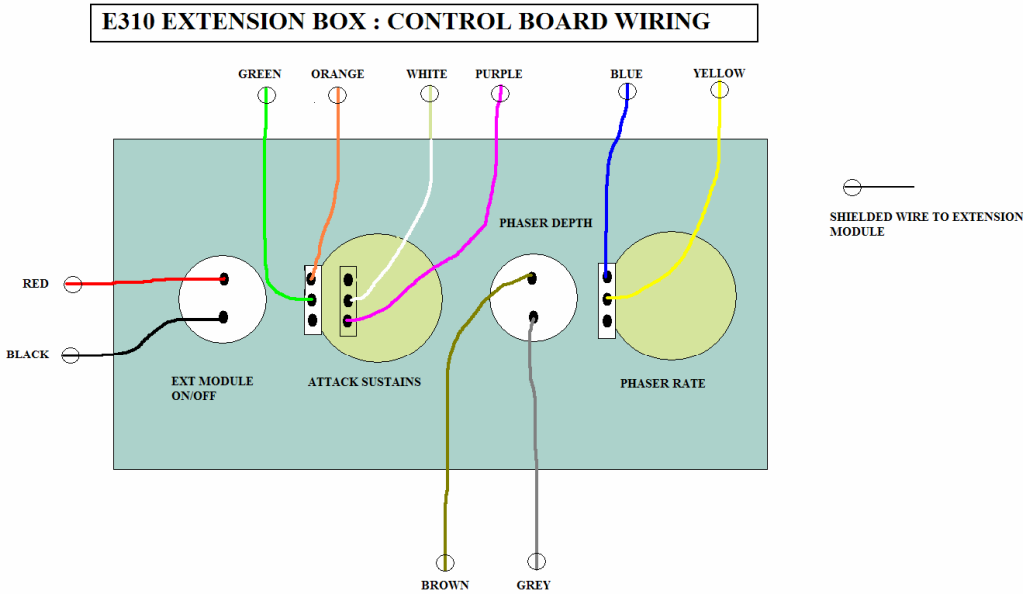


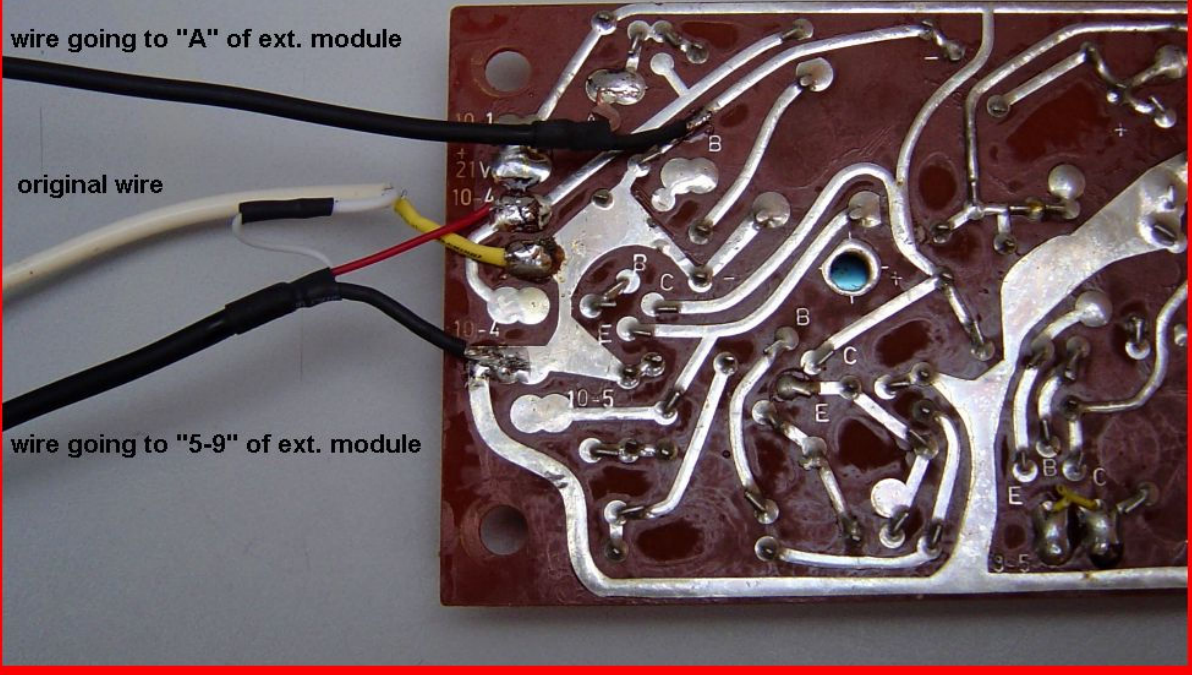
EMINENT EXTENSION BOX : WIRING DIAGRAMS



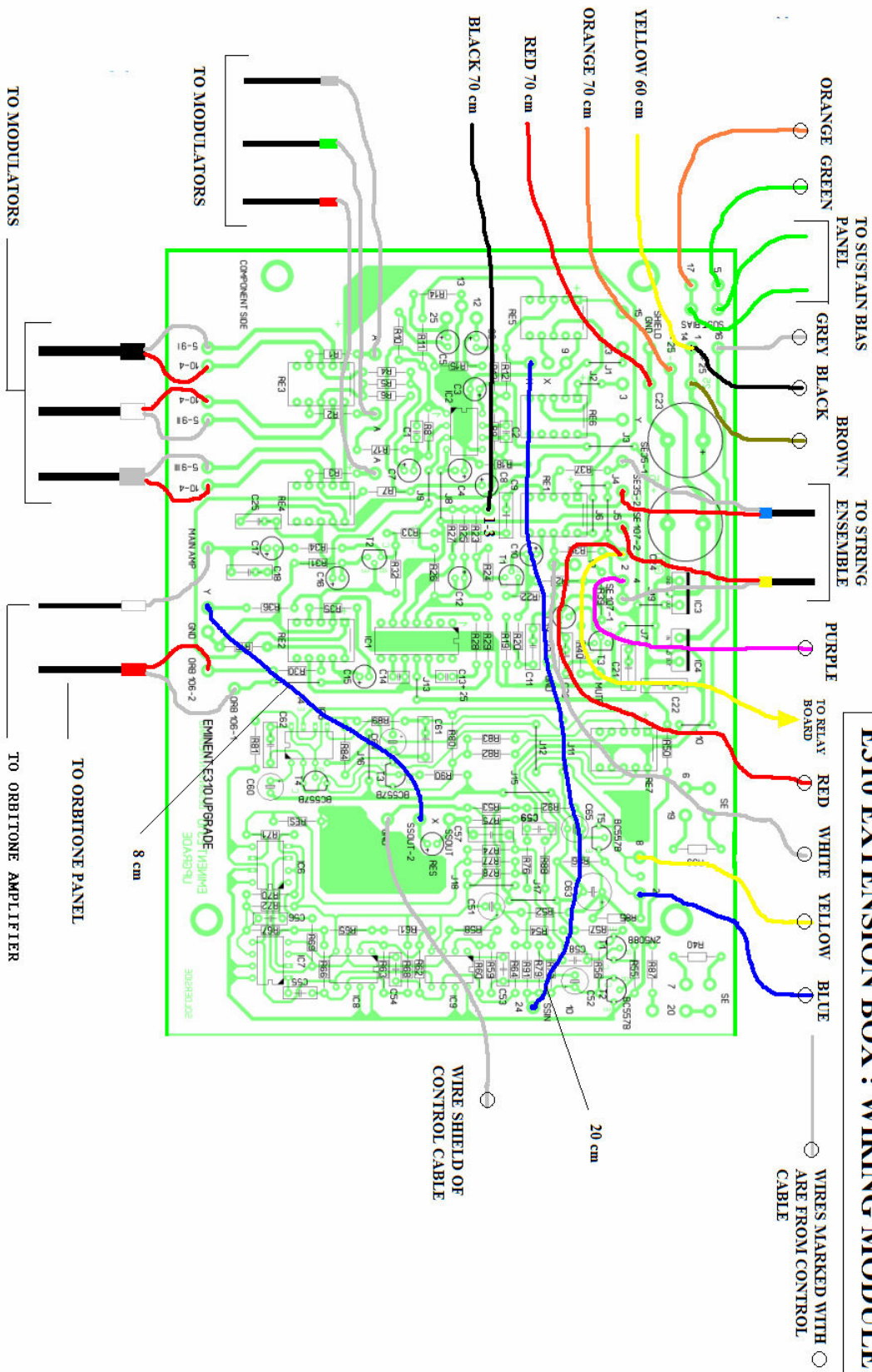
wire going to "A" of ext. module

original wire

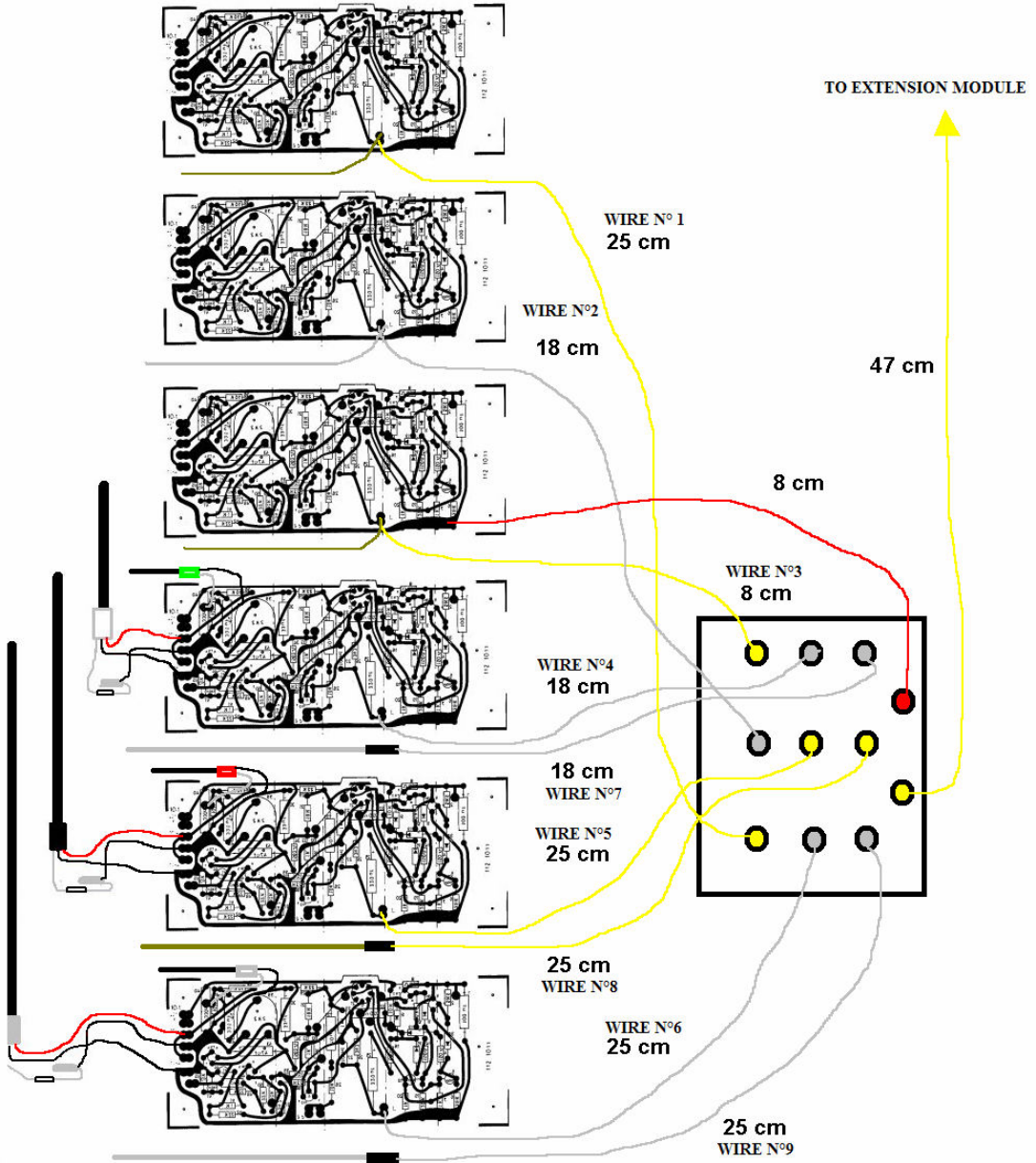
wire going to "5-9" of ext. module



E310 EXTENSION BOX : WIRING MODULE



MODULATORS - RELAY BOARD WIRING



E310 extension box : wiring and cables

single shielded wires		
number	color	length
1	white	60 cm
1	grey	55 cm
1	red	45 cm
1	green	35 cm
1	blue	16 cm
1	red	28 cm

double shielded wires		
number	color	length
1	blue	2 m
1	yellow	2 m
1	red	20 cm
1	white	32 cm
1	black	42 cm
1	transparen	52 cm

single wires		
number	color	length
2	green	108 cm
1	orange	70 cm
1	red	70 cm
1	black	70 cm
1	yellow	60 cm
1	yellow	47 cm
1	white	30 cm
1	white	25 cm
3	yellow	25 cm
1	blue	20 cm
3	white	18 cm
1	red	8 cm
1	yellow	8 cm

