



# Highland Oaks

## NEW HOME PRICING

STYLE	PLAN	PRICE
Hayestown	1460	\$209,900.00
St. Martin	1542	\$219,900.00
Saxton	1625	\$225,900.00
Whitney	1655	\$229,900.00
Ridgewood	1730	\$235,900.00
Soprano	1734	\$245,900.00
French Country	1752	\$249,100.00
Acadian	1865	\$257,150.00
Lofton (2 story)	1885	\$261,100.00

FOR MORE INFORMATION PLEASE CONTACT:

**Wanda Trosclair 504-416-7473**

*wtrosclair@landcrafthomes.com*

**OR**

**MAIN OFFICE 985-651-3007**

Please visit our furnished home in  
Highland Oaks community at  
205 Laurel Drive, St. Rose

**[www.landcrafthomes.com](http://www.landcrafthomes.com)**

Premiums may be required on certain home sites. Standard homesite 60'x100'

\*Plan number indicates estimated square feet of total area. This price quote is subject to change without notification. Prices effective 3-1-11.







# Highland Oaks

## INTERIOR FEATURES

10' ceilings - foyer, living, kitchen, master  
Wall to wall plush carpeting  
Ceramic tile in selected areas  
Fireplace with custom mantel per plan  
Telephone jack in each bedroom and kitchen  
Cable jack in each bedroom and living room  
Raised panel interior doors  
Decorator light fixtures  
Two ceiling fans (master and living)  
Rounded corners in main living area  
Extra bedrooms blocked and wired for fans  
Smoke detectors  
Ventilated shelving in closets  
Orange peel ceilings  
Pre-wire for alarm system

## KITCHEN FEATURES

Granite countertops with backsplash  
Sears Kenmore appliances  
30" Electric range with smooth glass top  
Microwave  
Disposal  
Dishwasher  
Delta washerless faucet with sprayer  
Stainless steel 8" double bowl sink  
Waterline for icemaker  
Furniture finished Designer wood cabinets  
Designer crown trim

## BATHROOM FEATURES

34" high Vanities  
Delta washerless faucets  
5' Oval Garden tub with Marbella trim  
Cultured Marble vanity tops with backsplash  
Plate glass mirrors above vanities  
Furniture finished Designer wood cabinets  
Elongated toilets  
Heater and exhaust fan

## EXTERIOR FEATURES

Sodded front yard w/ landscape package  
Concrete driveway and entry walk  
Two outside water faucets  
Two weatherproof electrical outlets  
Attic stairs (one set)  
Pre-wired for garage door opener  
Large patio slab  
Designer stain wood Entry Door

## ENERGY EFFICIENCY

Trane 13 SEER air conditioner  
Double insulated windows (with screens)  
High recovery electric water heater (50 gal)  
Polycell foam in all wall penetrations  
R-30 Blown Insulation in ceilings  
R-19 Batt insulation in sloped ceilings  
R-13 Batt insulation in exterior walls  
Roof ridge vent system  
Steel doors

## QUALITY CONSTRUCTION

One year new home warranty  
Five year structural warranty  
30-year architectural warranted dimensional roof shingles  
Engineered wall system to ensure sound construction  
Kiln dried lumber for framing and decking  
Stick-built on site - No prefabs  
16" on-center studs, load bearing walls  
12-2 electrical wire  
"Traditional" stucco (selected models)  
American-made kiln-fired clay bricks per plan  
Vinyl siding on rear, entry, soffit, fascia  
Termite treated sub-soil  
3000 PSI concrete foundation  
Engineered post tension foundation  
120 MPH rated Steel garage doors

[www.landcrafthomes.com](http://www.landcrafthomes.com)

Prices, products and specifications are subject to change without notice.

3-1-11







**Landcraft Homes**  
107 Fairway Drive  
Laplace, LA 70068  
985-651-3007

**Highland Oaks Model Home**  
504-469-7889



# How do I go about purchasing a Landcraft Home?

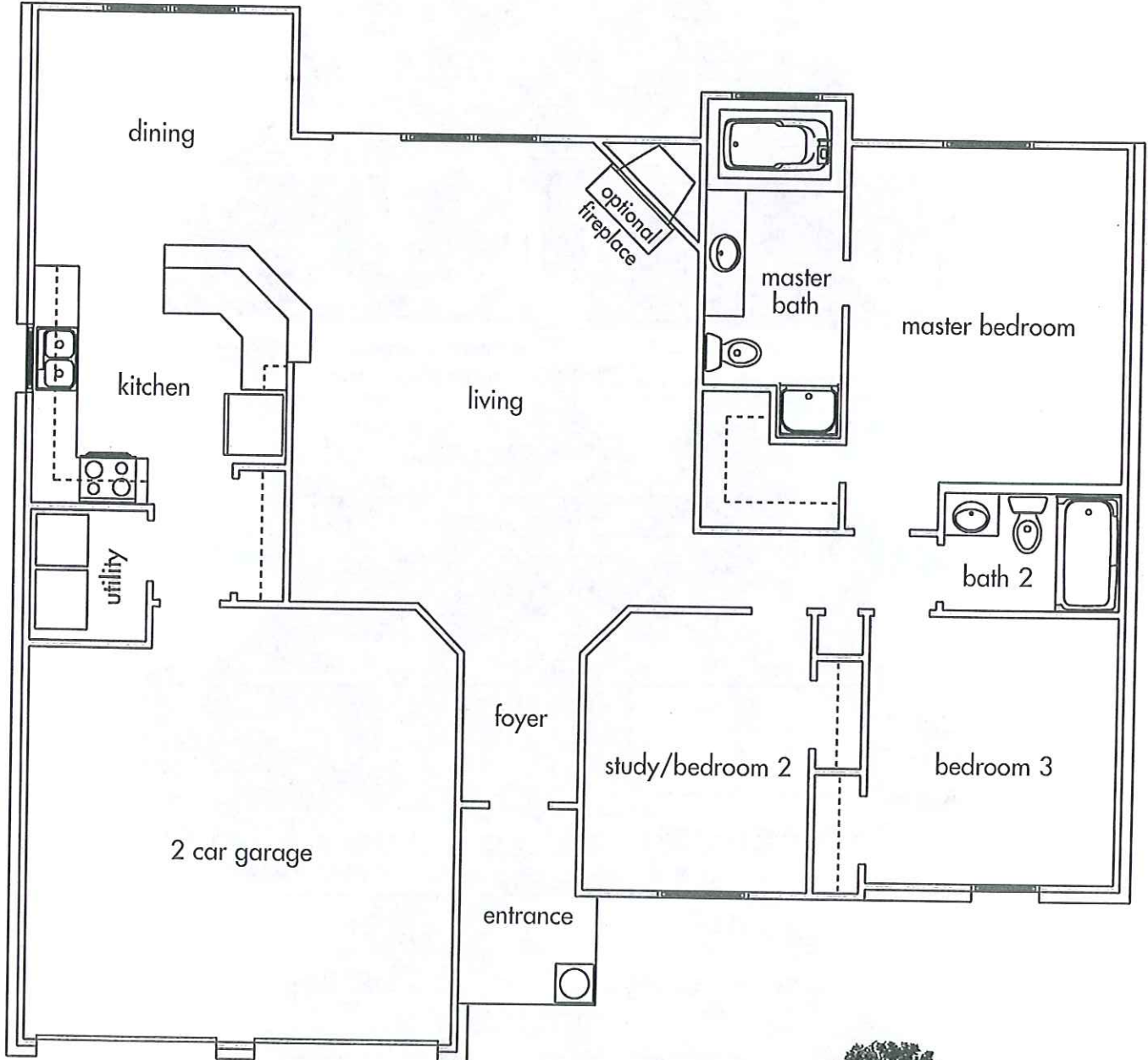
1. The deposit to get started is \$5000.
2. A letter of approval from a Preferred Lender stating your loan amount and conditions, if any.
3. Once you decide on any optional features, if the amount is over \$5000, we will need the remaining balance paid in full.

## Landcraft Homes Preferred Lenders

First National Bank  
985-653-7632  
Standard Mortgage  
504-828-2990  
Omni Bank  
985-652-7273  
America's Mortgage  
Resource  
985-653-7900



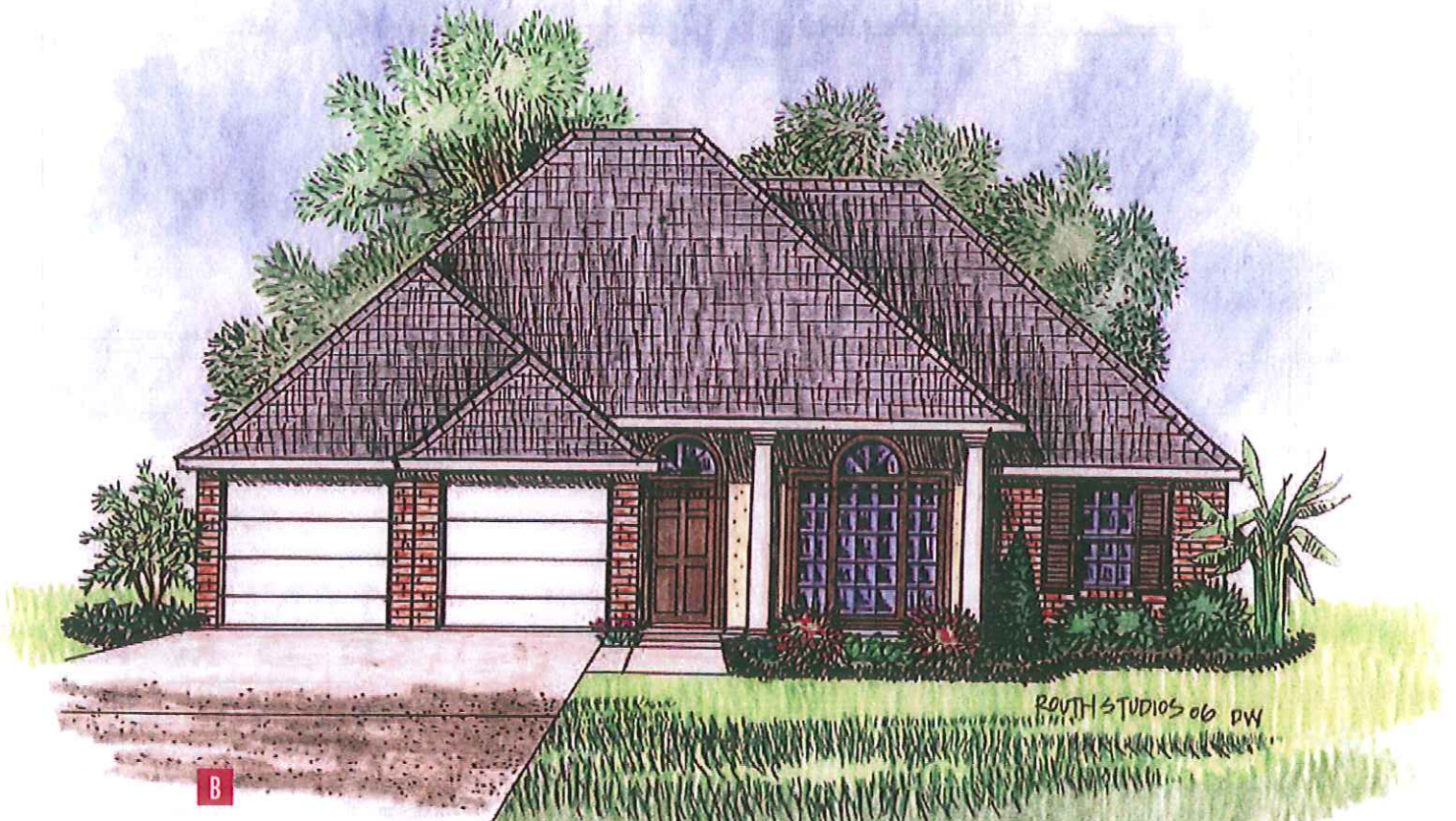
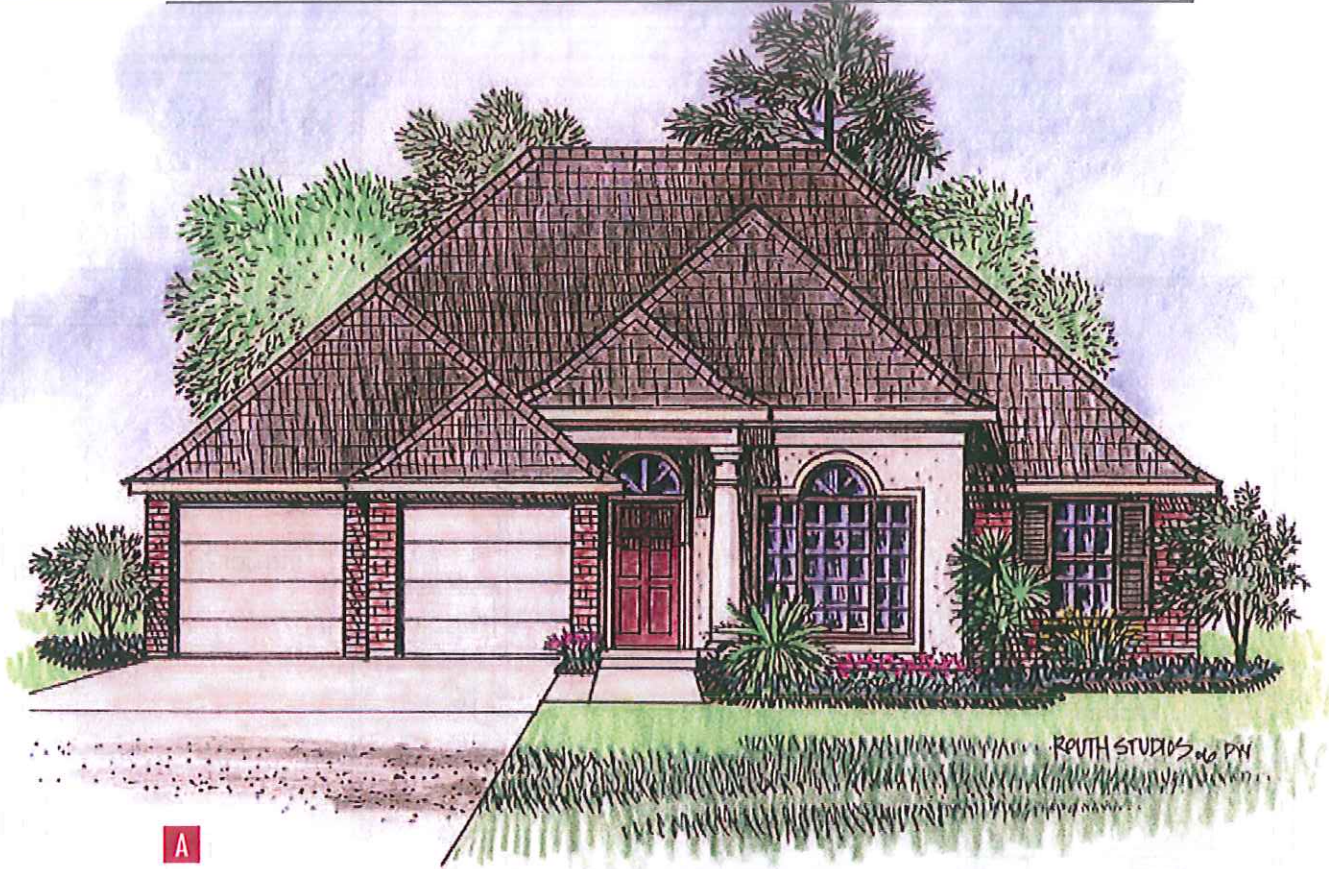


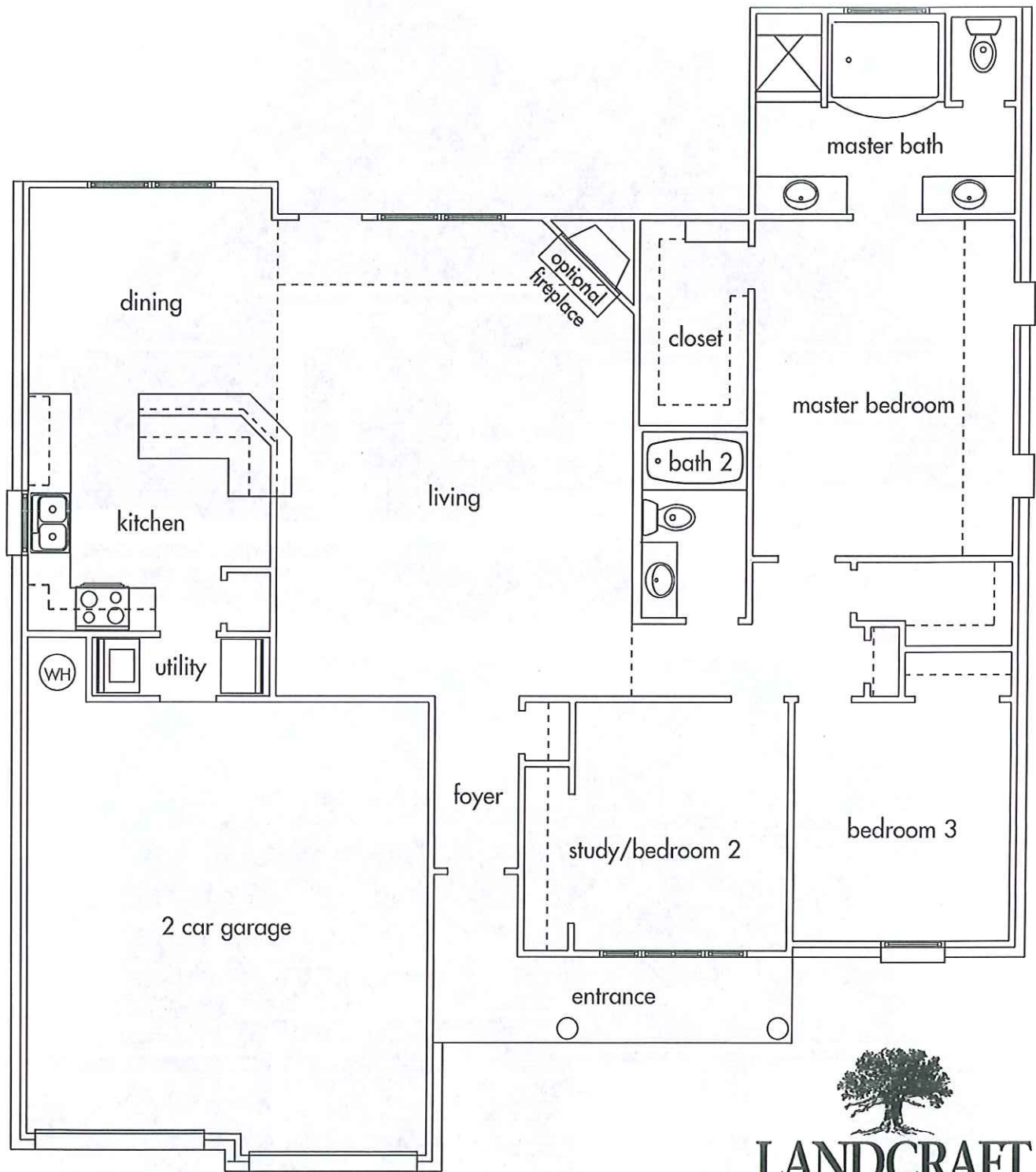


**LANDCRAFT  
HOMES**

**MODEL 1460—FLOOR PLAN**





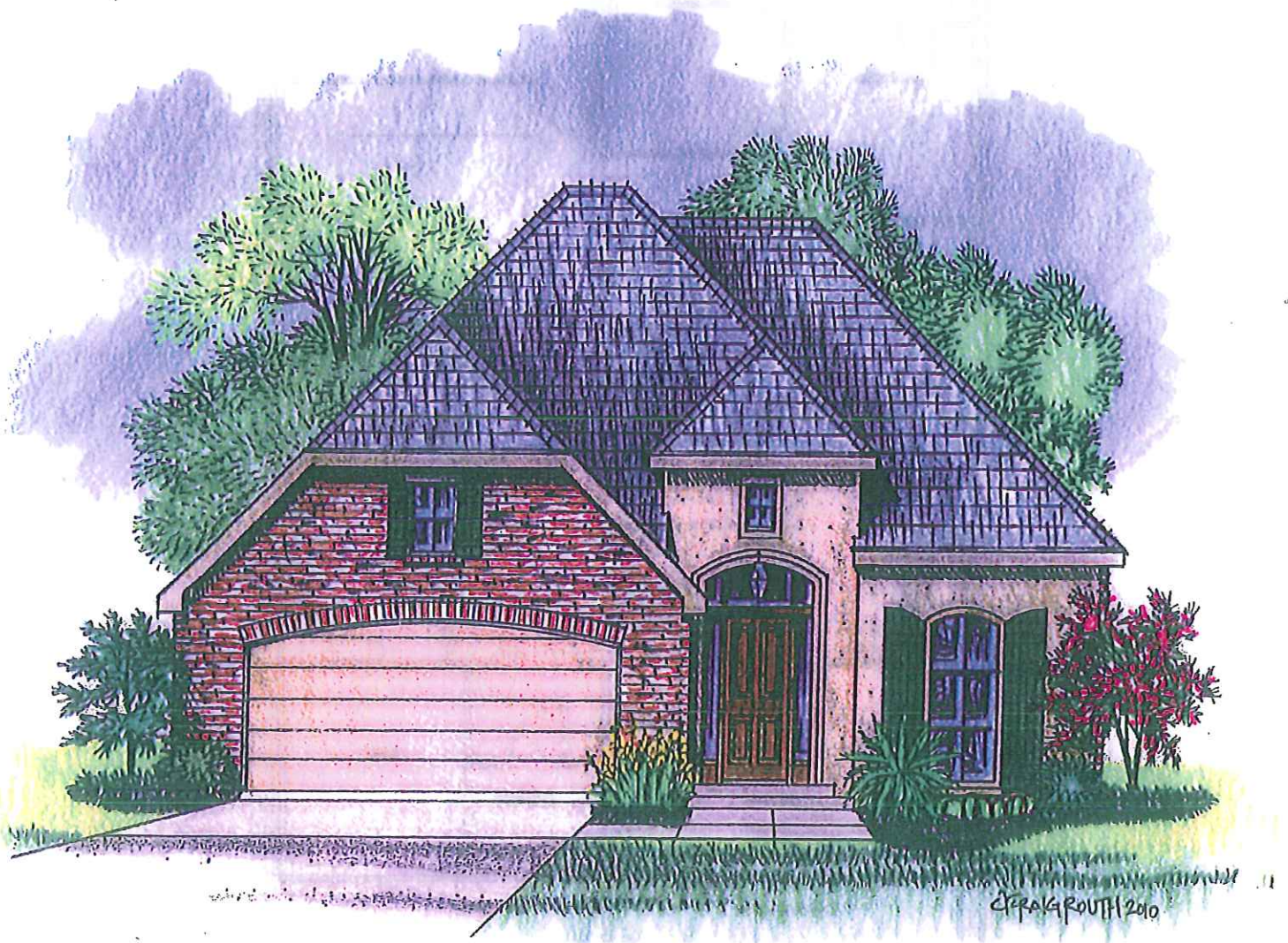


The drawings depicting the outside of these homes may vary slightly. The layouts and sizes indicated on the floor plans are approximate, and may also vary slightly. Specifications, products, and prices are subject to change without notice.

  
**LANDCRAFT  
H O M E S**  
MODEL 1542-FLOOR PLAN



# Landcraft Home



**LCH**<sup>INC.</sup>  
200 Academy Drive Nola 70124  
[www.landcrafthomes.com](http://www.landcrafthomes.com)  
(504) 237-9634

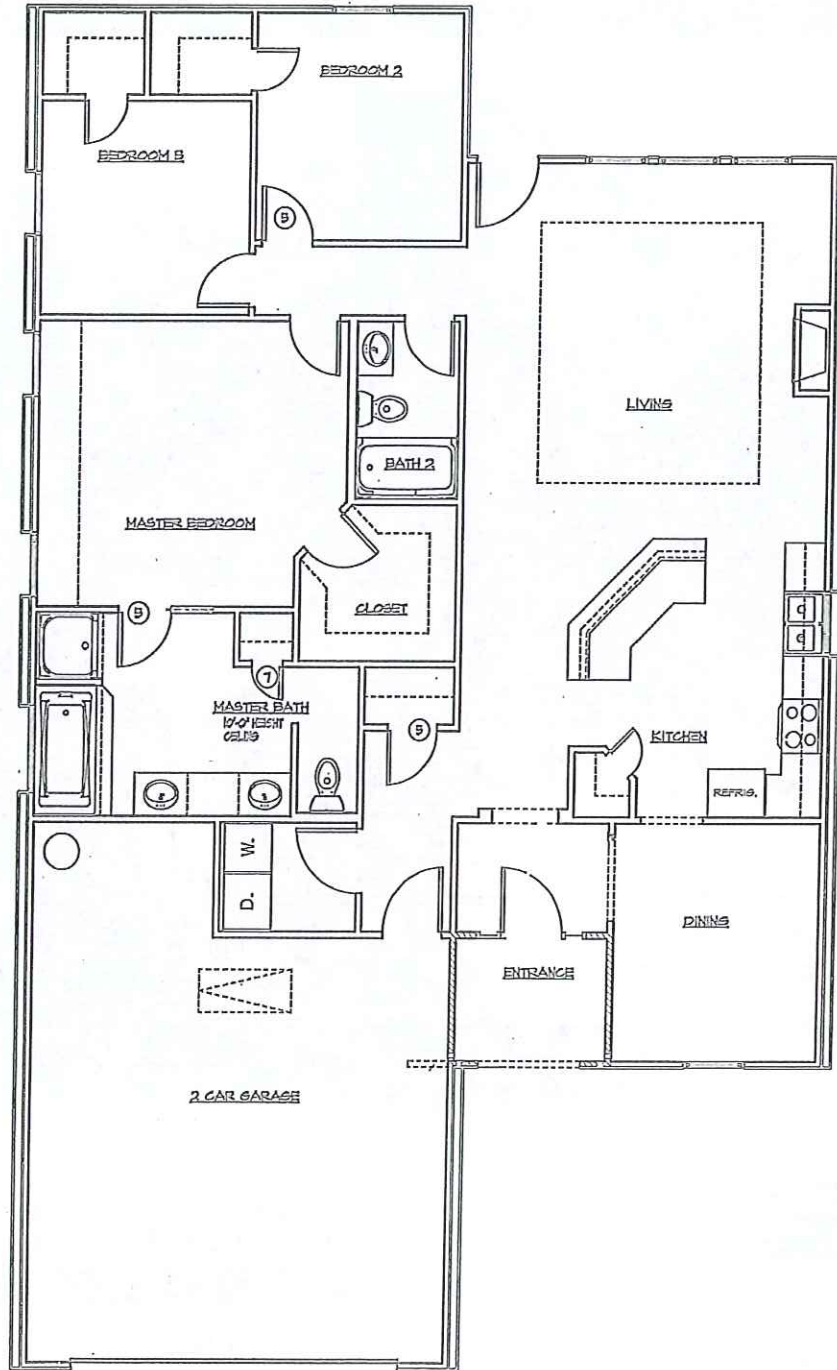
## Saxton 1625

2 Car Garage 450  
Covered area sqft. 100  
3 Bedrooms  
2 Baths

\* Artist rendering may not be built



Saxton 1625



The drawings depicting the outside of these homes may vary slightly. The layouts and sizes indicated on the floor plans are approximate, and may also vary slightly. Specifications, products, and prices are subject to change without notice.





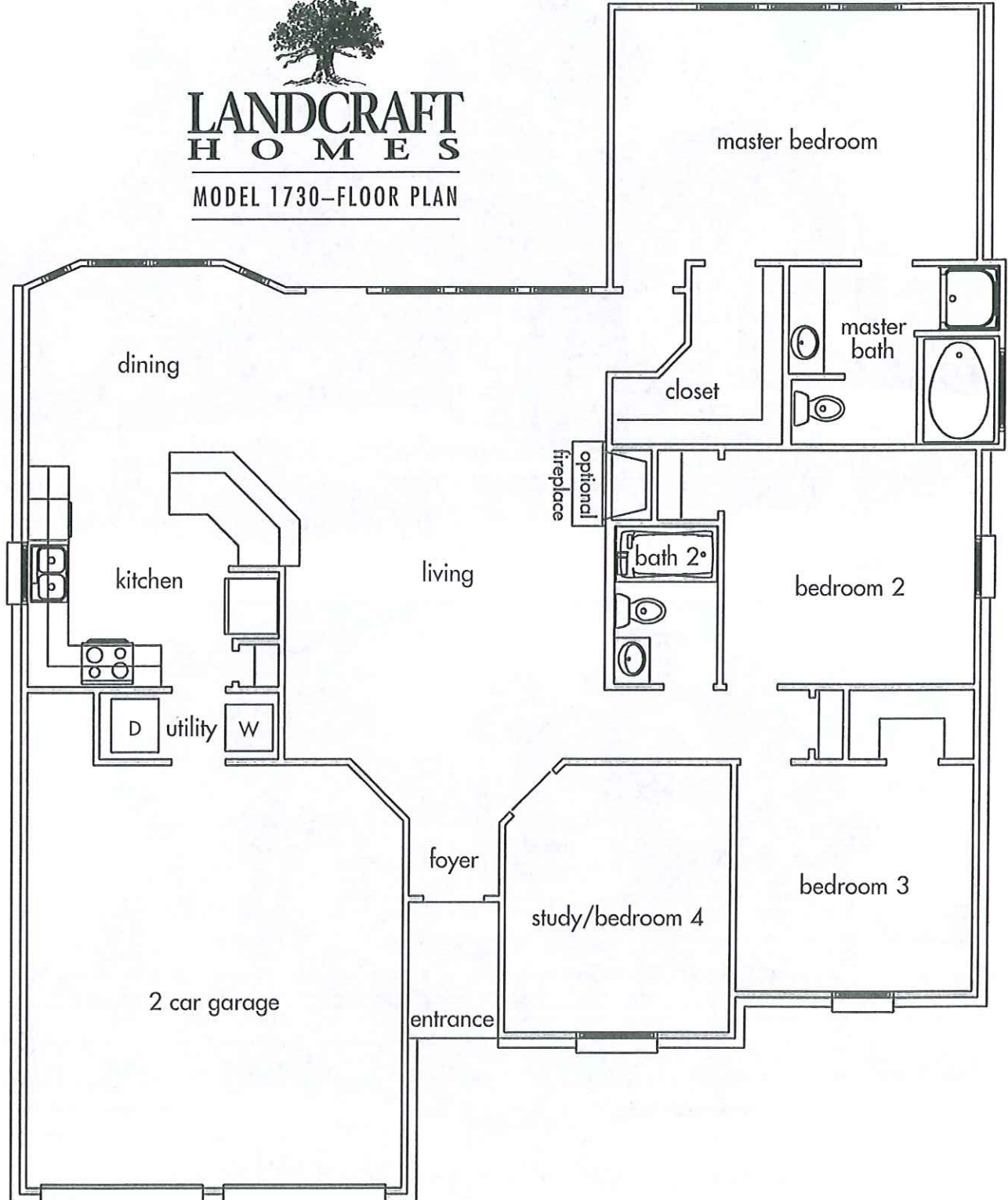
  
**LANDCRAFT  
H O M E S**  
MODEL 1655—FLOOR PLAN



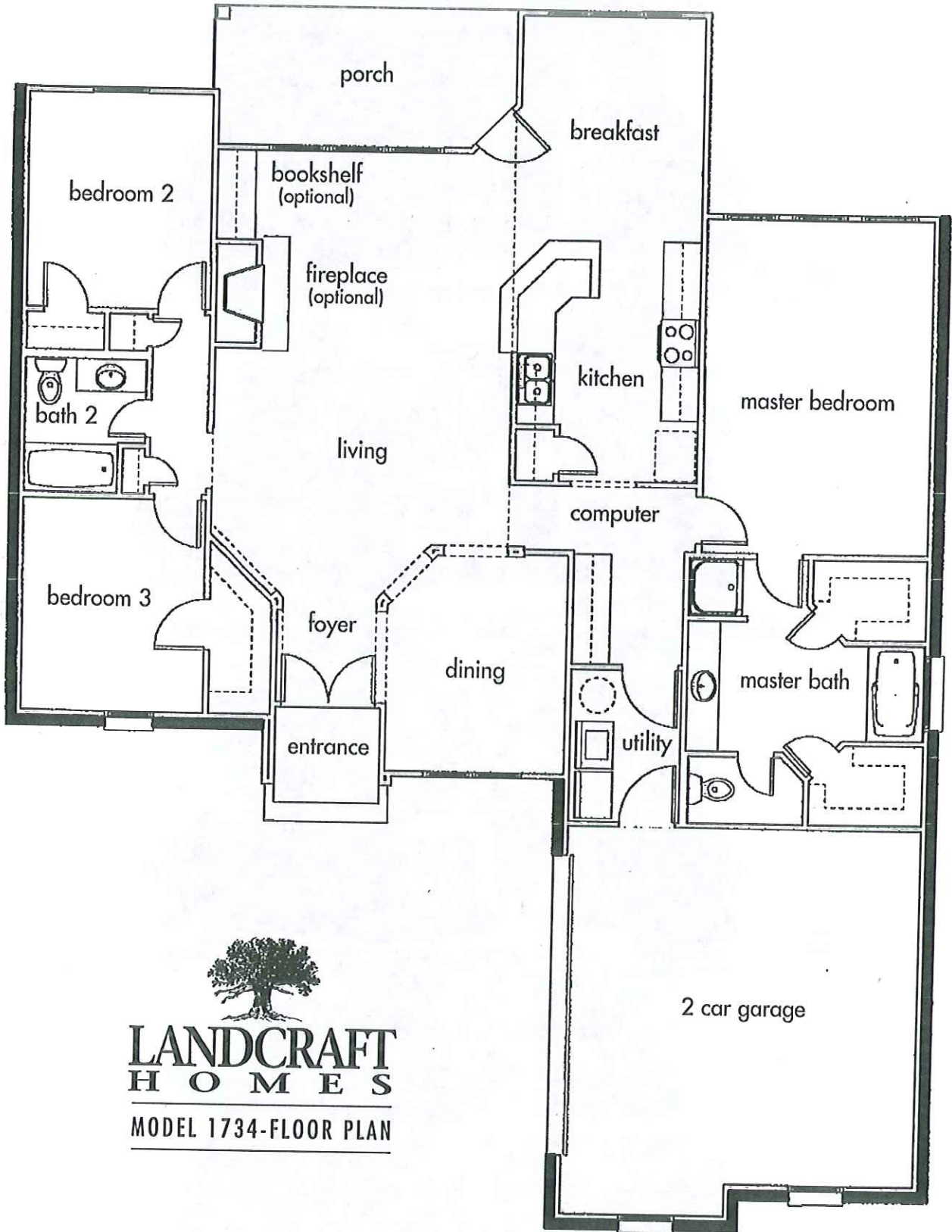




**LANDCRAFT  
H O M E S**  
MODEL 1730—FLOOR PLAN

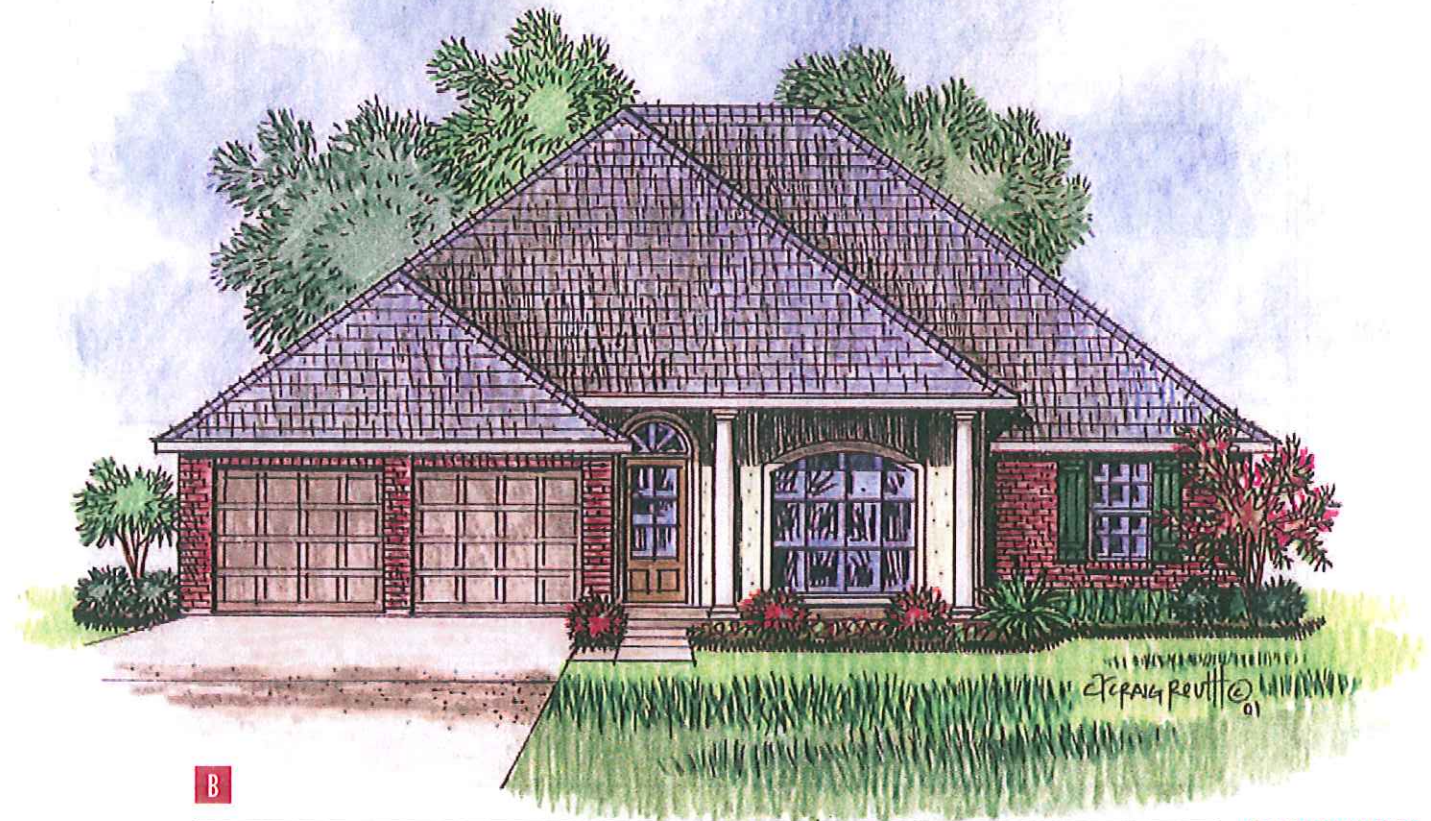






  
**LANDCRAFT  
H O M E S**  
MODEL 1734-FLOOR PLAN

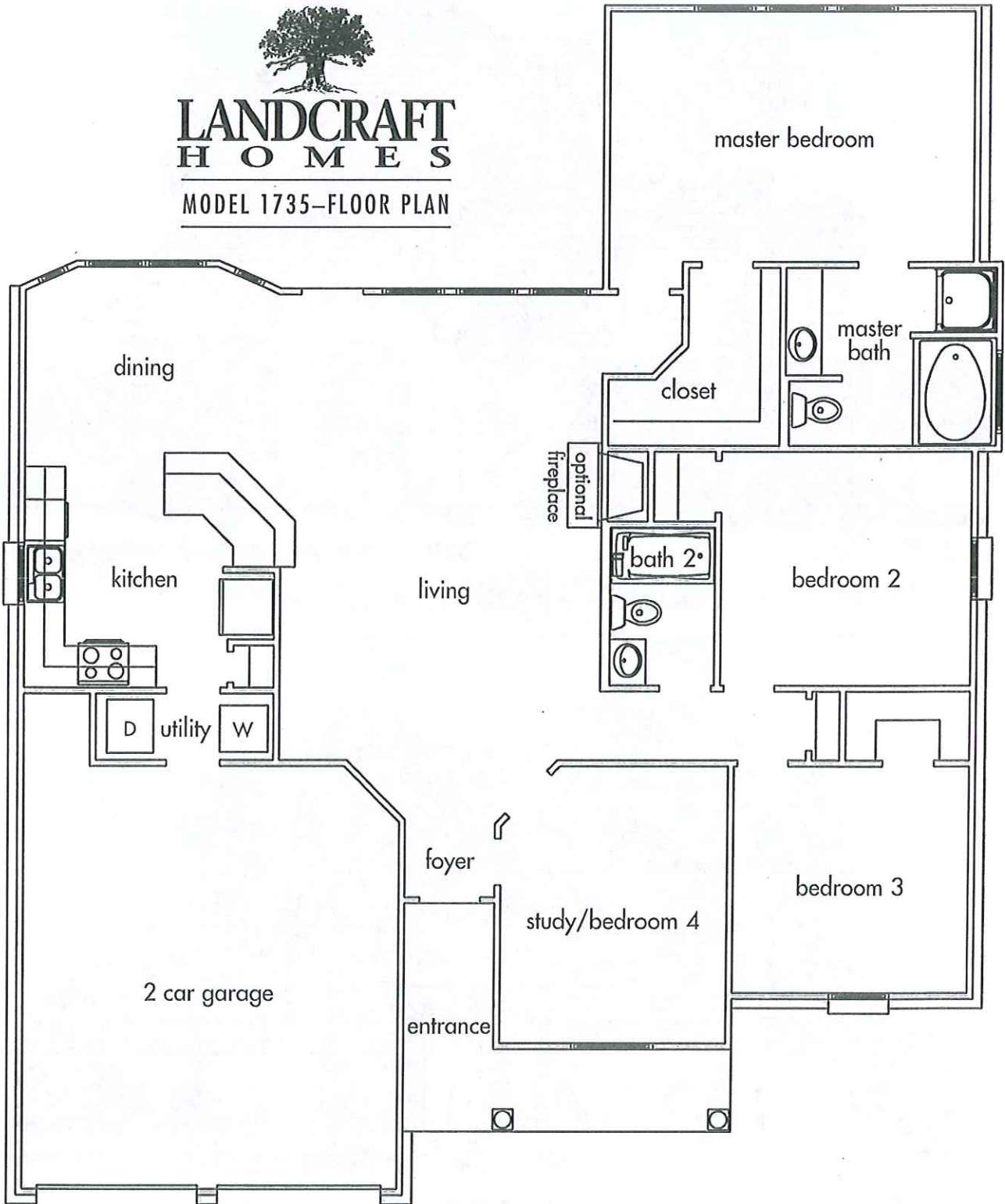


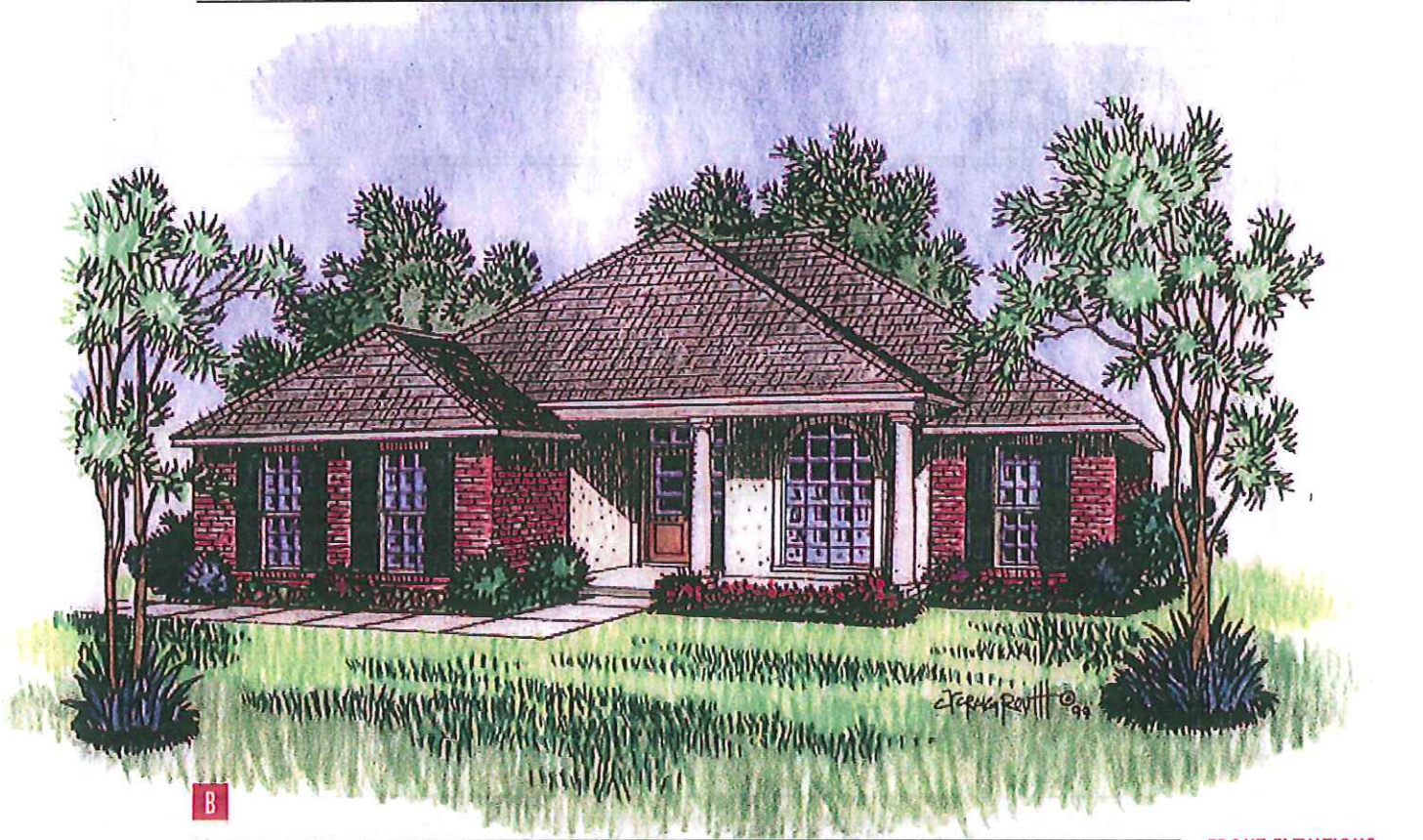




LANDCRAFT  
H O M E S

MODEL 1735-FLOOR PLAN

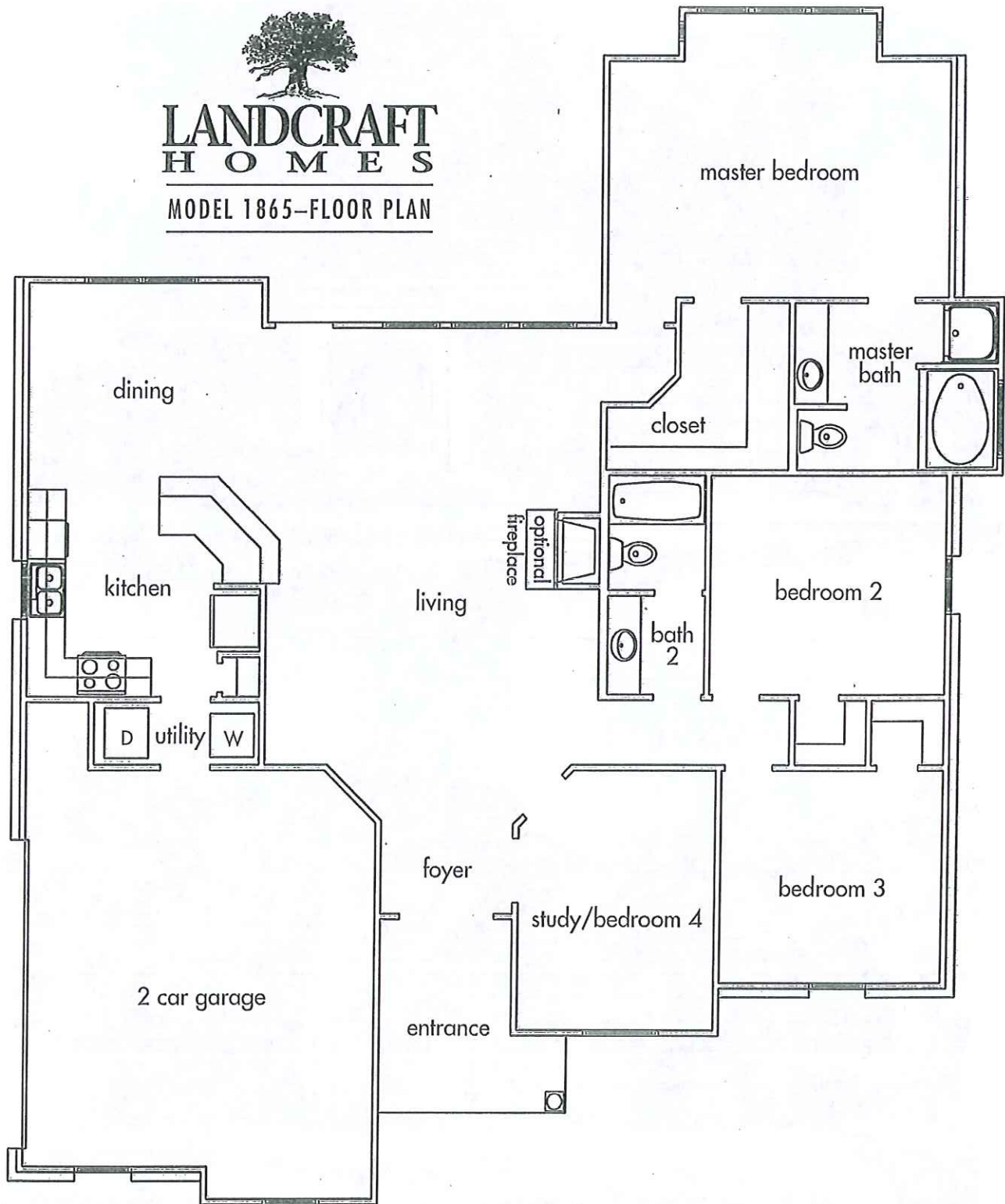




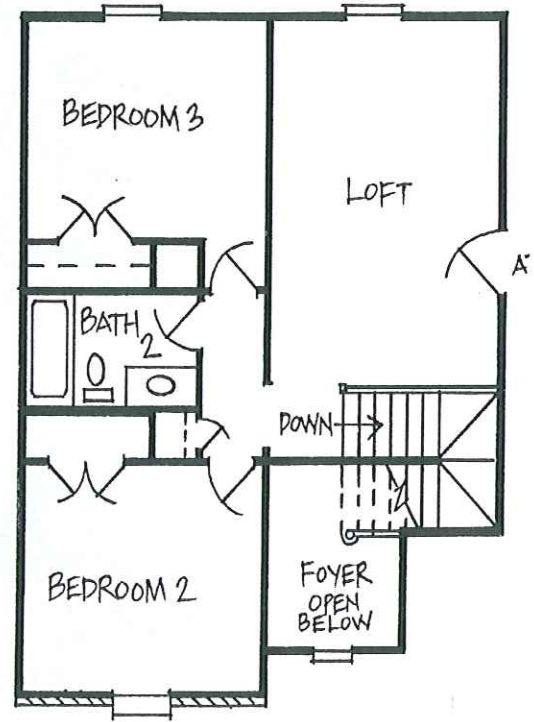
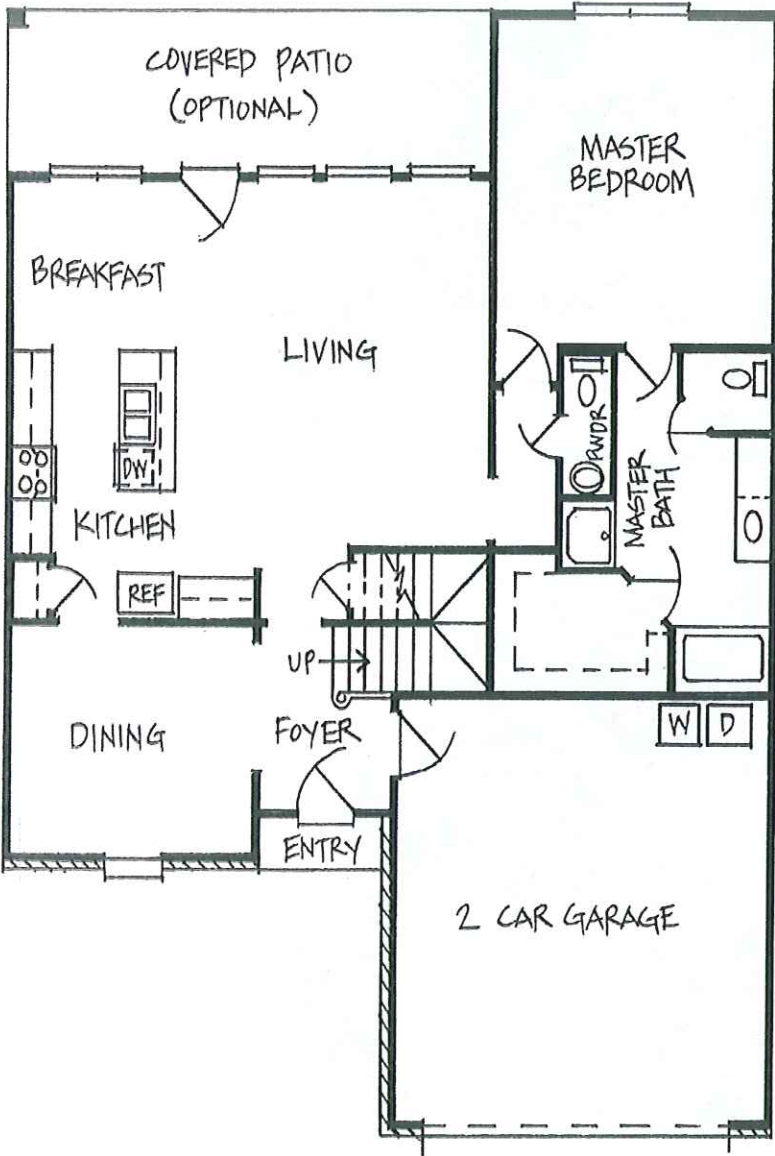


**LANDCRAFT  
H O M E S**

**MODEL 1865—FLOOR PLAN**







**LANDCRAFT  
HOMES**

MODEL 1885-FLOOR PLAN

