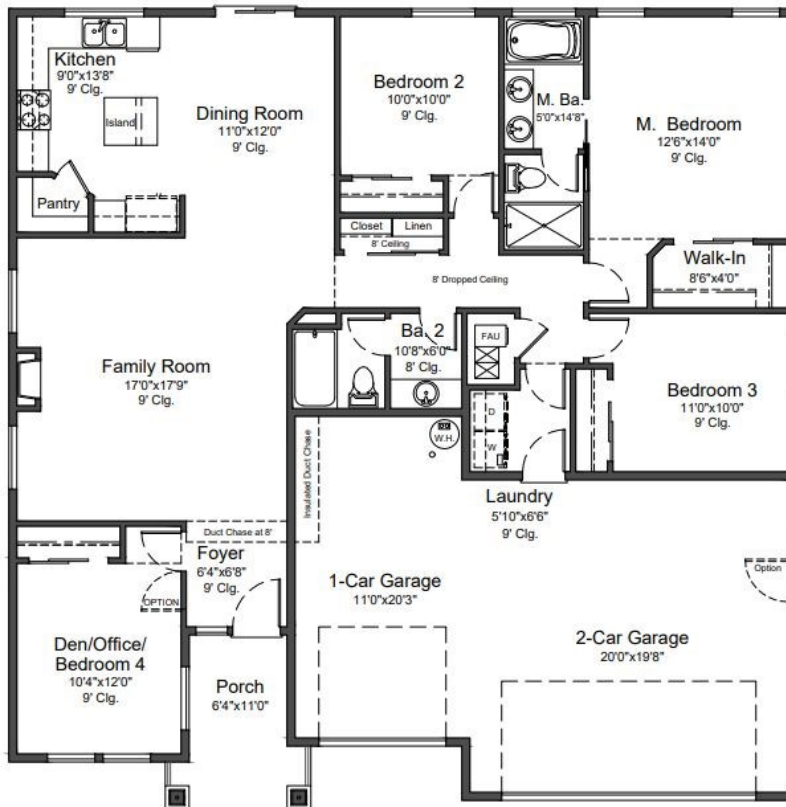


# IVY WOODS

E S T A T E S



GERVAIS PLAN B-1



GERVAIS PLAN B-2

## The Shamrock Plan B-1693

4 Bedroom / 2 Bath  
Optional Den / Office  
Single Story Home  
3 Car Garage  
1693 Sq. Ft.

Starting at

\$



Pacific Edge Development (CCB# 0035055) constantly strives to improve their products, therefore, specifications, prices, design features and or details are subject to change without notice, please consult with The Pacific Edge Development Representative. Standard Features may vary per plan. The home's stage of construction will determine the options that will be available to you. Please see the sales representative for further details and additional options.



**COLDWELL BANKER**  
MOUNTAIN WEST  
REAL ESTATE, INC.

**CHRIS FORRETTE**  
**503-409-3542**