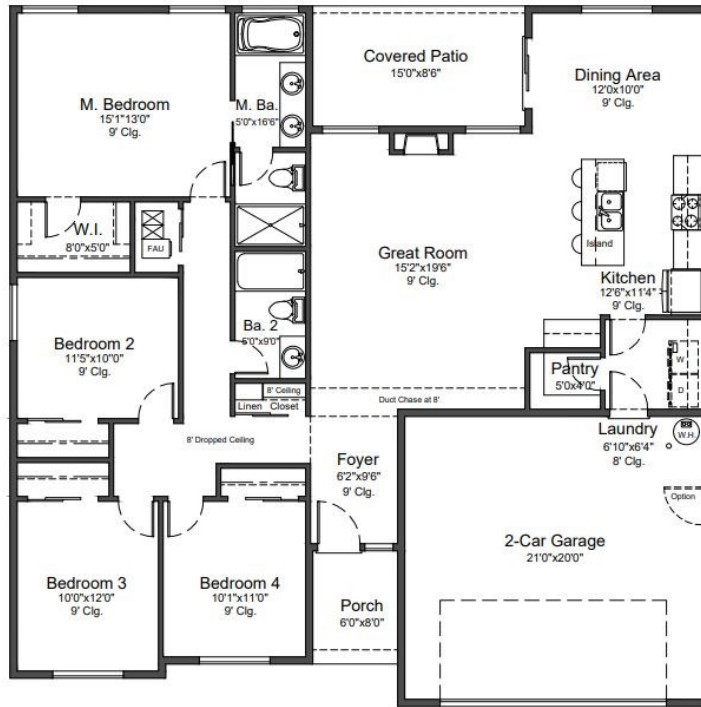


IVY WOODS

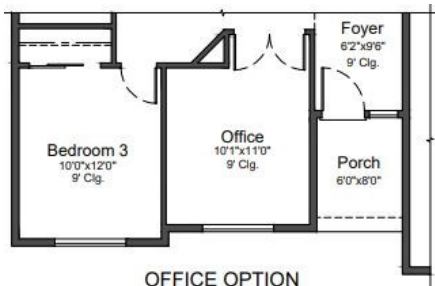
E S T A T E S



GERVAIS PLAN C-1



GERVAIS PLAN C-2



OFFICE OPTION

The Wisteria Plan C-1753

4 Bedroom / 2 Bath
Optional Den / Office
Single Story Home
2 Car Garage
1753 Sq. Ft.

Starting at

\$



PACIFIC EDGE DEVELOPMENT
PROUD TO BUILD ENERGY SAVINGS INTO EACH OF OUR
ENERGY-EFFICIENT EPS RATED HOMES

Trade Ally of
EnergyTrust
of Oregon



Pacific Edge Development (CCB# 0035055) constantly strives to improve their products, therefore, specifications, prices, design features and or details are subject to change without notice, please consult with The Pacific Edge Development Representative. Standard Features may vary per plan. The home's stage of construction will determine the options that will be available to you. Please see the sales representative for further details and additional options.



COLDWELL BANKER
MOUNTAIN WEST
REAL ESTATE, INC.

CHRIS FORRETTE
503-409-3542