

RECORD OF SURVEY

IN THE CITY OF LA CANADA-FLINTRIDGE, COUNTY OF LOS ANGELES, STATE OF CALIFORNIA

NOTE '1'
FOUND NAIL/TIN IN ASPHALT AREA ON PARCEL LINE - NO REF.

NOTE '2'
FOUND 2' X 2' HUB/TAG L5 3475 0.2' UP, 0.64' NORTH OF PARCEL LINE - NO REF.

NOTE '3'
FOUND CAPPED 1" IRON PIPE 0.2' UP L5 4825 - NO REF. ON PARCEL LINE

NOTE '4'
SET 1 1/2" IRON PIPE FLUSH WITH ASPHALT SURFACE ON PARCEL LINE, 5.00' OFFSET PARCEL CORNER.

NOTE '5'
FOUND CAPPED 1" IRON PIPE L5 4825 - NO REF. FLUSH AT TOP OF SMALL SLOPE AT PARCEL CORNER

NOTE '6'
FOUND 2' IRON PIPE L5 2716 - NO REF. UNDER END BRICK OF PATIO AREA AT TOP OF SLOPE AT PARCEL CORNER.

NOTE '7'
SET 2' IRON PIPE IN ROCK MOUND, 4 INCHES UP NEAR SW CORNER OF CONCRETE BLOCK WALL - SEE SHEET 1

NOTE '8'
SET LEAD/TAG IN SOUTH EAST FACE OF WALL +/- 2.5 FEET ABOVE GRADE. - SEE SHEET 1

NOTE '9'
FOUND LA CO FG BRASS CAP MON. F.C. DC 51 R.W. 427 - 1948 4' DEEP PER FC 2008 PAGE 7

NOTE '10'
102.09' HELD PER FC 2008 PG 7 FROM F.C. DC 51 R.W. 429 - 1948 AND PARALLEL WITH THE LACFGD R/W SIDELINE TO THE SOUTH TO RE-ESTABLISH THE ANGLE POINT IN THE LACFGD R/W. THIS POINT FALLS IN AN AREA WHERE PRIVATE IMPROVEMENTS HAVE BEEN PLACED AND WAS NOT SEARCHED FOR SEEING THAT DESTRUCTION OF PRIVATE IMPROVEMENTS WOULD HAVE TO BE DONE FOR A SEARCH.

NOTE 'A'
THE COMMON LINE OF LOTS 5 AND 6 OF SAID TRACT NO. 12878 WAS RE-ESTABLISHED AS SHOWN:

THE COMMON WESTERLY CORNER OF SAID LOTS WAS ESTABLISHED ALONG THE WEST SIDELINE OF OAKWOOD AVENUE USING THE RECORD ARC VALUE OF 71.04' FROM THE P.R.C. OF OAKWOOD. THIS COMMON LINE WAS THEN FIXED AT A POINT 65.00' SOUTHWESTERLY FROM AND 90° TO THE 1" IRON PIPE TAGGED RE 2410. THE LINE WAS THEN EXTENDED TO THE WESTERLY LINE OF THE VACATED 12' WIDE WALK.

NOTE 'B'
PARCEL MAP NO. 3504 P.M.D. 49 PAGE 21 MAKES THE CALL OF ESTABLISHING THE NWLY LINES OF LOT 9, TRACT NO. 12878 M.D. 262 PAGES 39 AND 40 BY RECORD ANGLES AND DISTANCES FROM THE C/L OF OAKWOOD. THE RECORD DISTANCE TO THE NE CORNER OF SAID LOT 9, FROM THE ANGLE POINT OF THE NORTH SIDELINE OF STONEGLEN ROAD IS 96.21'. NOT THE 96.27' AS SHOWN ON SAID P.M. 3504. THIS SURVEY HAS USED 96.21' FOR THE DISTANCE TO THE NE CORNER OF SAID LOT 9 FROM SAID SIDELINE ANGLE POINT.

NOTE 'C'
THE RE-ESTABLISHMENT OF THE EASTERLY LINE OF TRACT NO. 10937 M.D. 192 PAGES 48 AND 49 WAS DONE IN THE FOLLOWING MANNER:

CONTROL MONUMENTS 'A', 'B' AND 'D' WERE HELD IN POSITION. THESE MONUMENTS WERE SHOWN TO ME BY VARIOUS PARTIES IN POSSESSION OF THE LANDS SHOWN AND HAVE BEEN ACCEPTED IN PLACE.

POINT C-1 WAS ESTABLISHED 90° TO THE SIDELINE OF STONEGLEN ROAD AND AT RECORD DISTANCE OF 94.32' NORTHERLY.

POINT C-2 WAS ESTABLISHED AT RECORD ANGLE AND DISTANCE FROM THE SIDELINE OF OAKWOOD AVENUE FOR THE NE CORNER OF LOT 8 OF SAID TRACT. THIS CREATED A POINT ON THE WEST SIDELINE OF THE VACATED 12' WIDE WALK.

POINT C-3 WAS ESTABLISHED HINGING A LINE AT C-2 AND FIXING IT 90° TO AND 6.00' WESTERLY FROM CONTROL MON. E. A LINE WAS THEN EXTENDED EASTERLY THROUGH CONTROL MON. E, 12.00'.

POINT C-4 WAS ESTABLISHED AT RECORD DISTANCE OF 106.58' FROM POINT C-1 AND THROUGH CONTROL MON 'D'.

POINT C-5 WAS ESTABLISHED PARALLEL WITH THE LINE DESCRIBED BETWEEN CONTROL MONS 'B' AND 'A' AND AT A RECORD DISTANCE NORTHERLY OF 107.15' FROM POINT C-4.

POINT C-6 WAS ESTABLISHED AT RECORD DISTANCE OF 88.90' NORTHERLY FROM POINT C-5 AND USING A RECORD ANGLE OF 184°35'30" TO THE LEFT FROM THE LINE C-5 TO C-4.

POINT C-7 WAS THEN ESTABLISHED BY INTERSECTION USING A RECORD ANGLE OF 136°22'40" TO THE LEFT FROM THE LINE C-6 TO C-5.

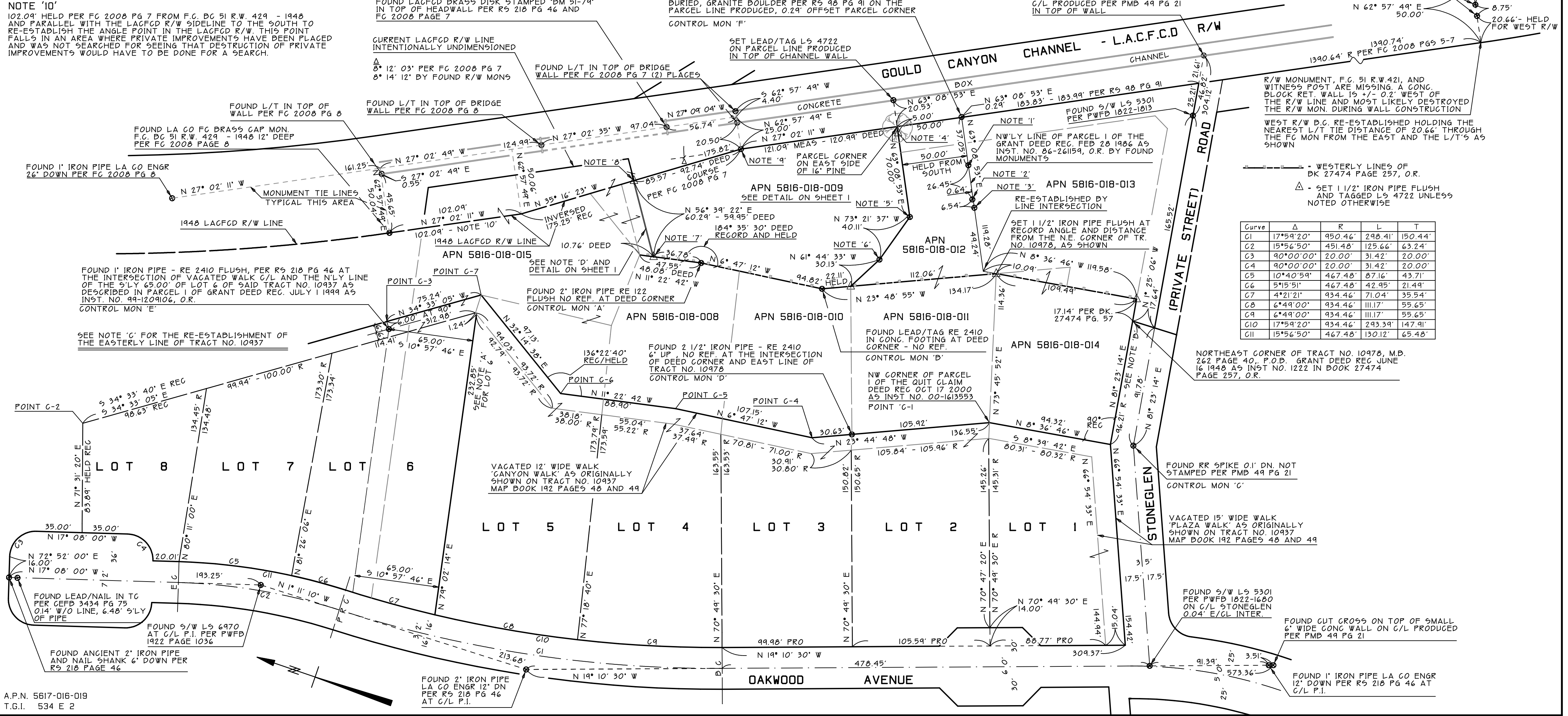
NOTE 'D'
THE SOUTH EAST FACE OF AN EXISTING CONCRETE BLOCK SCREEN WALL HAS BEEN ACCEPTED AS BEING THE COMMON LINE OF THE FOLLOWING INSTRUMENTS OF RECORD:

- THE SOUTH EAST LINE OF THE DEED TO WILLIAM G. AND MARY WEBB, REC. JAN 18, 1956 AS DOCUMENT NO. 3253 IN BOOK 50082 PAGE 26
- THE NORTH WEST LINE OF THE TRUST TRANSFER DEED TO NEVIN A. AND ELIZABETH T. BRYANT REC. AUG 4 2003 AS INSTRUMENT NO. 03-2242555
- THE SOUTH EAST LINE OF PARCEL 7 OF THE GRANT DEED RECORDED JULY 1, 1991 TO DAVID A. DEDLOW AS INSTRUMENT NO. 99-1209106

THE VARIOUS DEEDS HAVE DIFFERENT POINTS OF BEGINNING. SINCE THERE IS EVIDENCE OF CONFLICT BETWEEN RECORD DEED VALUES AND EXISTING SURVEY MONUMENTS THIS LINE CAN SHIFT NORTH OR SOUTH, DEPENDING ON WHICH CONTROL MONUMENTS ARE USED TO PLACE THE LINE AND WHAT DECISIONS ARE MADE BY A RETRACING SURVEYOR. THE WALL LOCATION HAS BEEN REPORTED TO ME BY CERTAIN PARTIES IN POSSESSION OF THE SURROUNDING LANDS, THAT PRIOR TO THE WALL'S EXTENSION IN HEIGHT, A PREVIOUS FOUNDATION EXISTED THAT THE CURRENT WALL WAS PLACED UPON OR CONSTRUCTED IN PLACE TO THIS POSSESSION LINE IS THE BEST AVAILABLE EVIDENCE FOR THE COMMON LINE HERINAFOVE MENTIONED.

THE ANGULAR ATTITUDE OF THE WALL TO THE DEED LINE SOUTH OF IT DEVIATES ONLY 0° 08' 04" IN ANGLE FROM THE DEEDS, THIS MINOR VARIATION IN A SIXTY FOOT LENGTH AMOUNTS TO 1 2/3 INCHES.

PRELIMINARY



| Curve | Δ | R | L | T |
|-------|-----------|---------|---------|---------|
| C1 | 17°59'20" | 950.46' | 298.41' | 150.44' |
| C2 | 15°56'50" | 451.48' | 125.66' | 63.24' |
| C3 | 90°00'00" | 20.00' | 31.42' | 20.00' |
| C4 | 90°00'00" | 20.00' | 31.42' | 20.00' |
| C5 | 10°40'59" | 467.48' | 87.16' | 43.71' |
| C6 | 5°15'51" | 467.48' | 42.95' | 21.49' |
| C7 | 4°21'21" | 934.46' | 71.04' | 35.54' |
| C8 | 6°49'00" | 934.46' | 111.17' | 55.65' |
| C9 | 6°49'00" | 934.46' | 111.17' | 55.65' |
| C10 | 17°59'20" | 934.46' | 293.39' | 147.91' |
| C11 | 15°56'50" | 467.48' | 130.12' | 65.48' |