



985-651-3007 ■ www.landcrafthomes.com

PRICELIST


MODEL HOME PRICING

PLAN	MODEL NAME	PRICE
1295	RIVER RANCH	\$146,900.00
1413	O'NEIL	\$156,900.00
1460	HAYESTOWN	\$166,900.00
1542	ST. MARTIN	\$173,900.00
1600	DALTON	\$176,000.00
1640	OXFORD	\$179,400.00
1730	RIDGEWOOD	\$183,900.00

For more information please contact:

*Sommer Naquin
504-416-9294 or snaquin@landcrafthomes.com*

Please visit our model home in Coles Landing.

 *Plan number indicates estimated square feet of living area. Premiums may be required on certain home sites. Standard homesite 60' X 100'. This price quote is subject to change without notification. Prices effective 6-17-10.



DESIGNER SERIES ■ STANDARD FEATURES

INTERIOR FEATURES

- 10' ceilings - foyer, living, kitchen, master
- Wall to wall plush carpeting
- Ceramic tile in selected areas
- Two-piece crown in foyer and living room
- Telephone jack in each bedroom and kitchen
- Cable jack in each bedroom and living room
- Fireplace with custom mantel
- Decorator light fixtures
- Two ceiling fans (master and living)
- Rounded corners in main living area
- Extra bedrooms blocked and wired for fans
- Smoke detectors
- Orange peel ceilings
- Raised panel interior doors
- Ventilated shelving in closets

KITCHEN FEATURES

- Hot point appliances
- 30" Electric range with coil burners
- Microwave
- Disposal
- Dishwasher
- Delta washerless faucet with sprayer
- Stainless steel 6" double bowl sink
- Waterline for icemaker
- Formica countertops with backsplash
- Furniture finished cabinets in 2 colors

BATHROOM FEATURES

- Delta washerless faucets
- 5' oval garden tub with marbella trim
- Cultured marble vanity tops with backsplash
- Plate glass mirrors above vanities
- Furniture finished cabinets in 2 colors
- Elongated toilets
- Heater and exhaust fan

EXTERIOR FEATURES

- Sodded front yard w/landscape package
- Concrete driveway and entry walk
- Two outside water faucets
- Pre-wired for garage door opener
- 8' x 8' patio slab
- Two weatherproof electrical outlets

ENERGY EFFICIENCY

- High efficiency 13 SEER air conditioner
- R-22 Blown insulation in ceilings
- R-19 Batt insulation in sloped ceilings
- R-11 Batt insulation in exterior walls
- Roof ridge vent system
- High recovery electric water heater (50 gal)
- Polycell foam in all wall penetrations
- Double insulated windows (with screens)
- Insulated steel entry doors

QUALITY CONSTRUCTION

- One year new home warranty
- Five year structural warranty
- Engineered wall system to ensure sound construction
- Kiln dried lumber for framing and decking
- Stick-built on site - No prefabs
- 16" on-center studs, load bearing walls
- 12-2 electrical wire
- "Traditional" stucco (selected models)
- American-made kiln-fired clay bricks
- 30-year warranted dimensional roof shingles
- Termite treated sub-soil
- 3000 PSI concrete foundation
- Engineered post tension foundation
- 16' steel garage door
- Vinyl siding on rear, entry, soffit, fascia



Landcraft Homes

Optional Features for Cole's Landing

Double tray with one piece crown	\$2800
Covered patio	\$50.00/sf
Additional patio slab (standard is 8' x 10')	\$10.00/sf
Wide base and door trim	\$950
Sheetrock and painted garage interior	\$2500
Custom color paint (up to 3 colors)	\$1900
Washable paint	\$800
Additional ceiling fan	\$150
Recessed can/soffit can/eyeball can (per light)	\$125
Floodlight	\$175
Exterior lantern – electric (per lantern)	\$225
Additional cable, phone, electrical outlet	\$100
Security system with two keypads	\$1800
Automatic garage door opener (per door)	\$500
Crown molding on kitchen cabinets	\$500
8" kitchen sink	\$150
5' jetted tub	\$1200
Double vanity in master bath	\$950
Carpet insert with tiled hallway	\$2500
Additional ceramic tile	\$7.00/sf
Wood flooring	\$9.25/sf
Laminate flooring	\$8.00/sf
Wood burning fireplace	\$2800
2 piece crown in the foyer and living	\$1800
Microwave	\$550
Single wood door	\$1200
Brick on the rear of home	\$2800

Optional features and upgrades included with some floorplans. Not all upgrades are available for all floorplans. Pricing for changes made during the construction process may be higher if change is possible at time of request. Not all requests will be honored and are subject to administrative approval. 6/17/2010

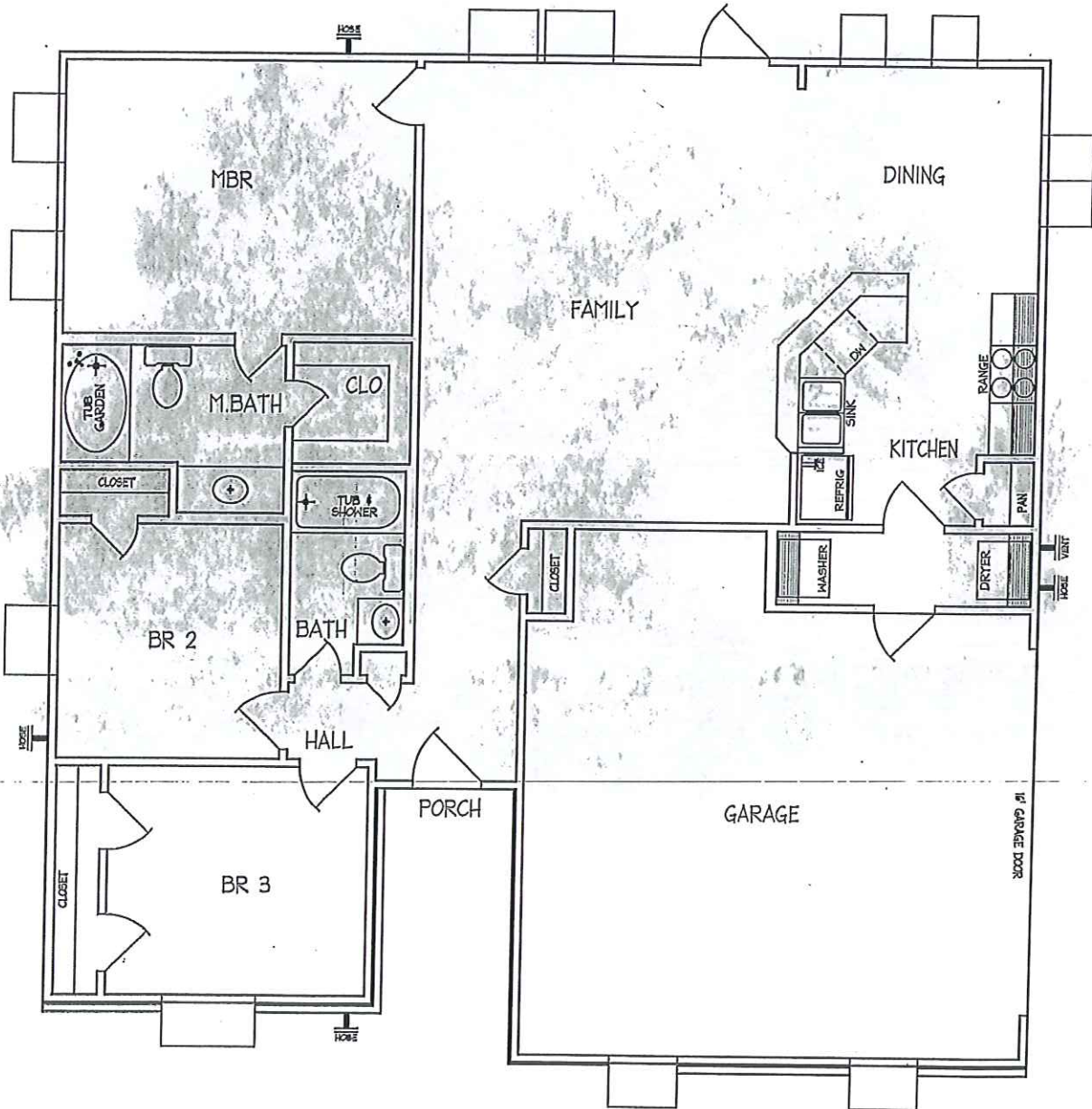


FRONT ELEVATION



LANDCRAFT HOMES

MODEL 1295.



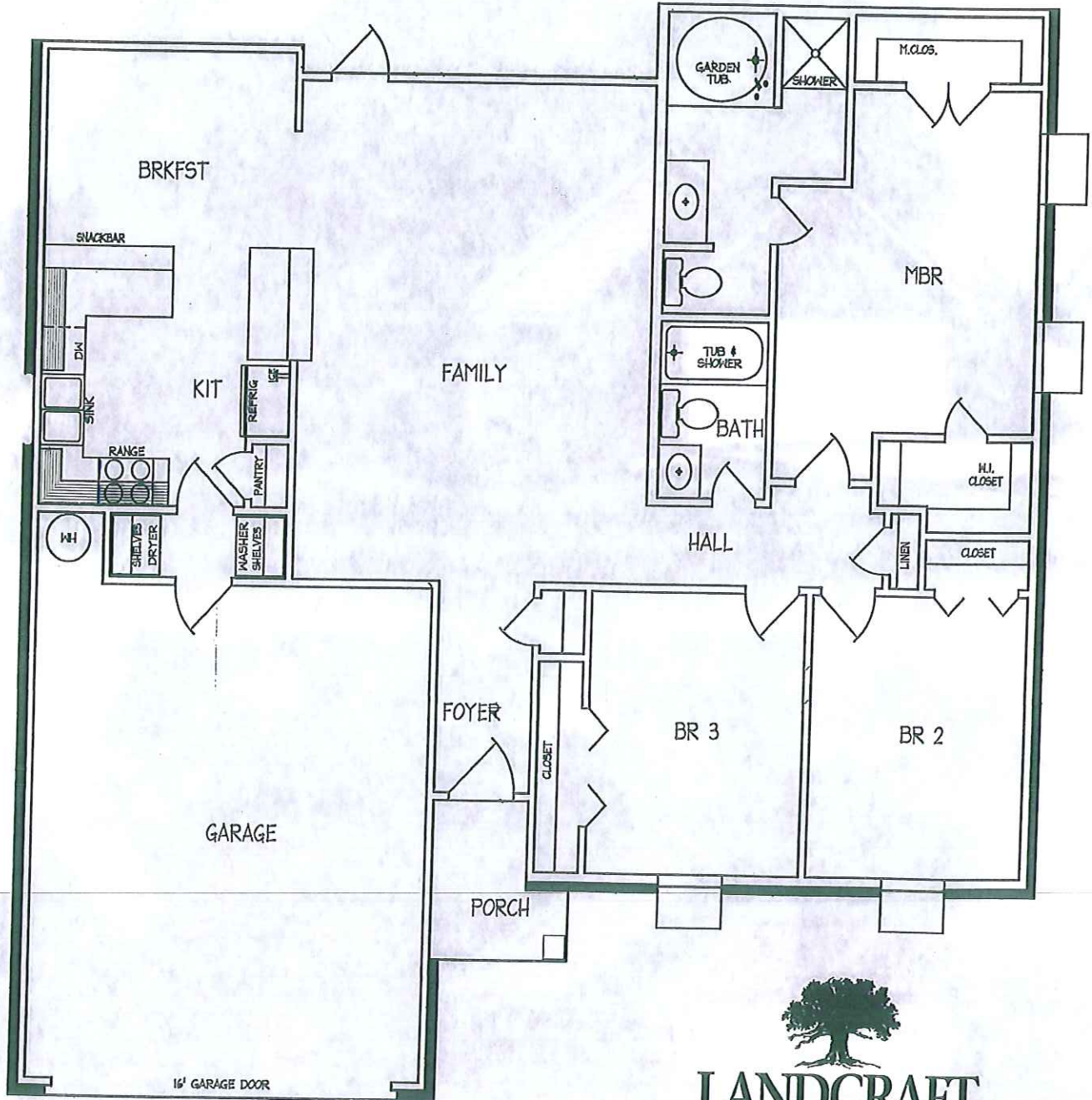
The drawings depicting the outside of these homes may vary slightly. The layouts and sizes indicated on the floor plans are approximate, and may also vary slightly. Specifications, products, and prices are subject to change without notice.



Designer COLLECTION

985-651-3007

www.landcrafthomes.com

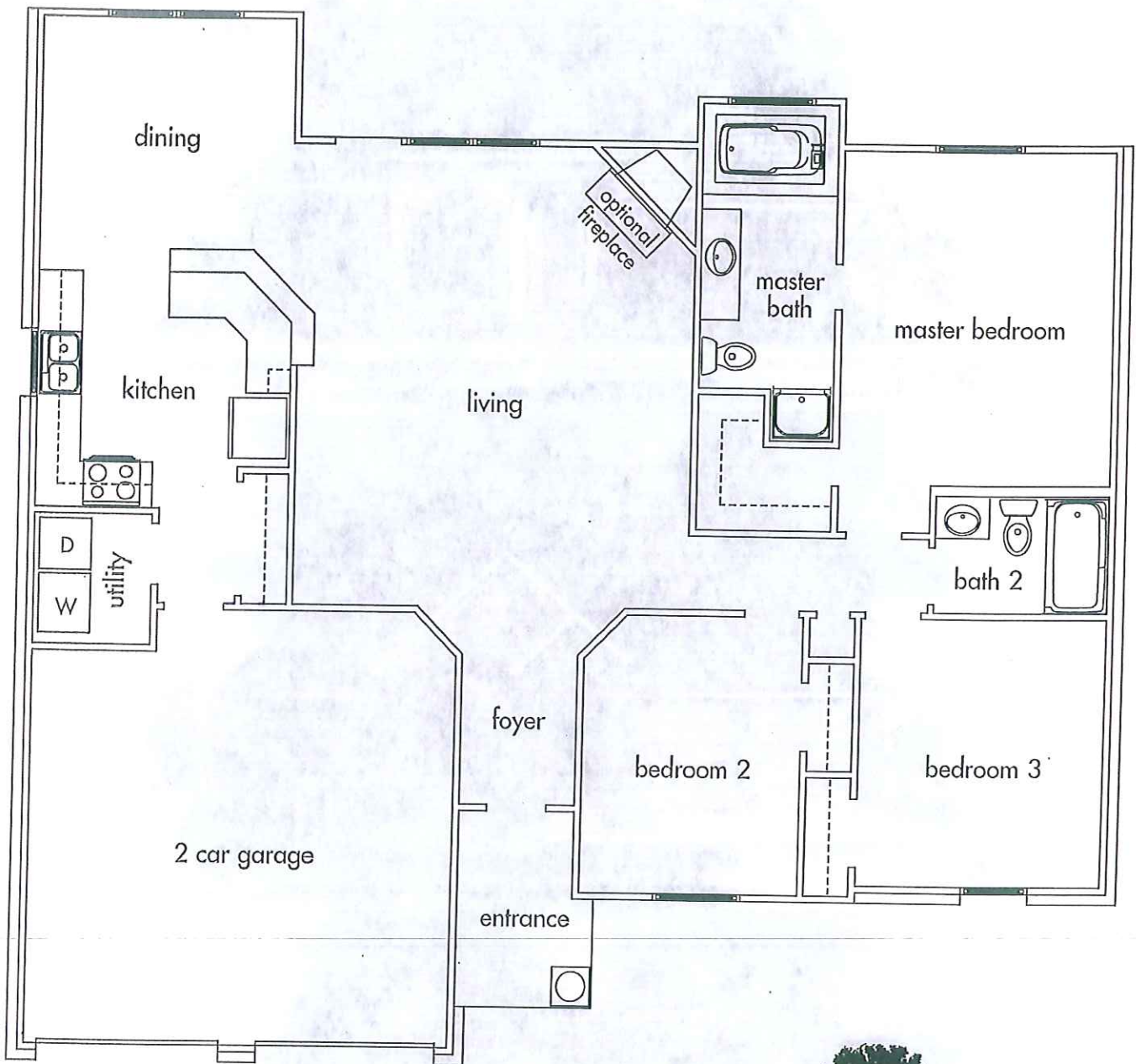


MODEL 1413



The drawings depicting the outside of these homes may vary slightly. The layouts and sizes indicated on the floor plans are approximate, and may also vary slightly. Specifications, products, and prices are subject to change without notice.



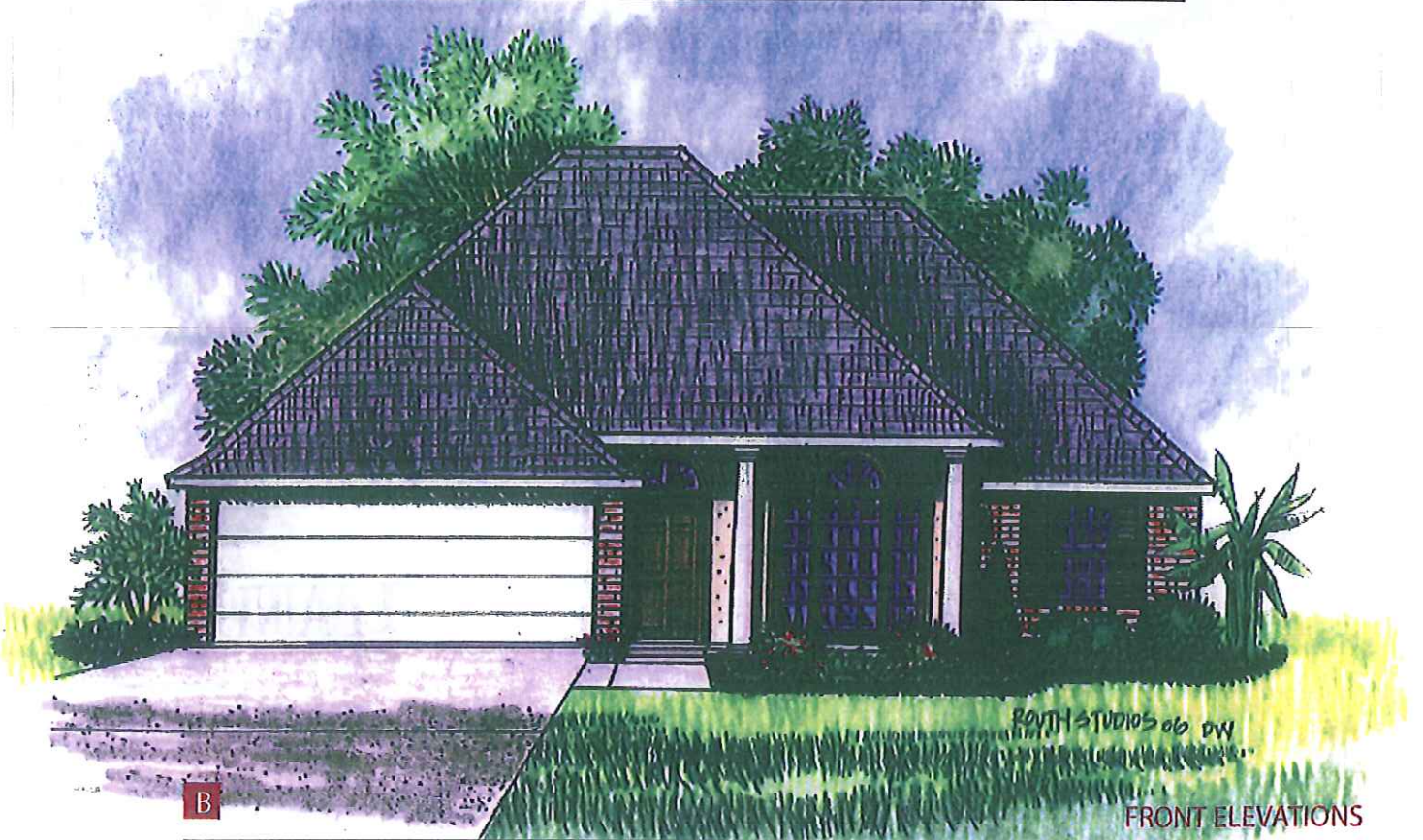
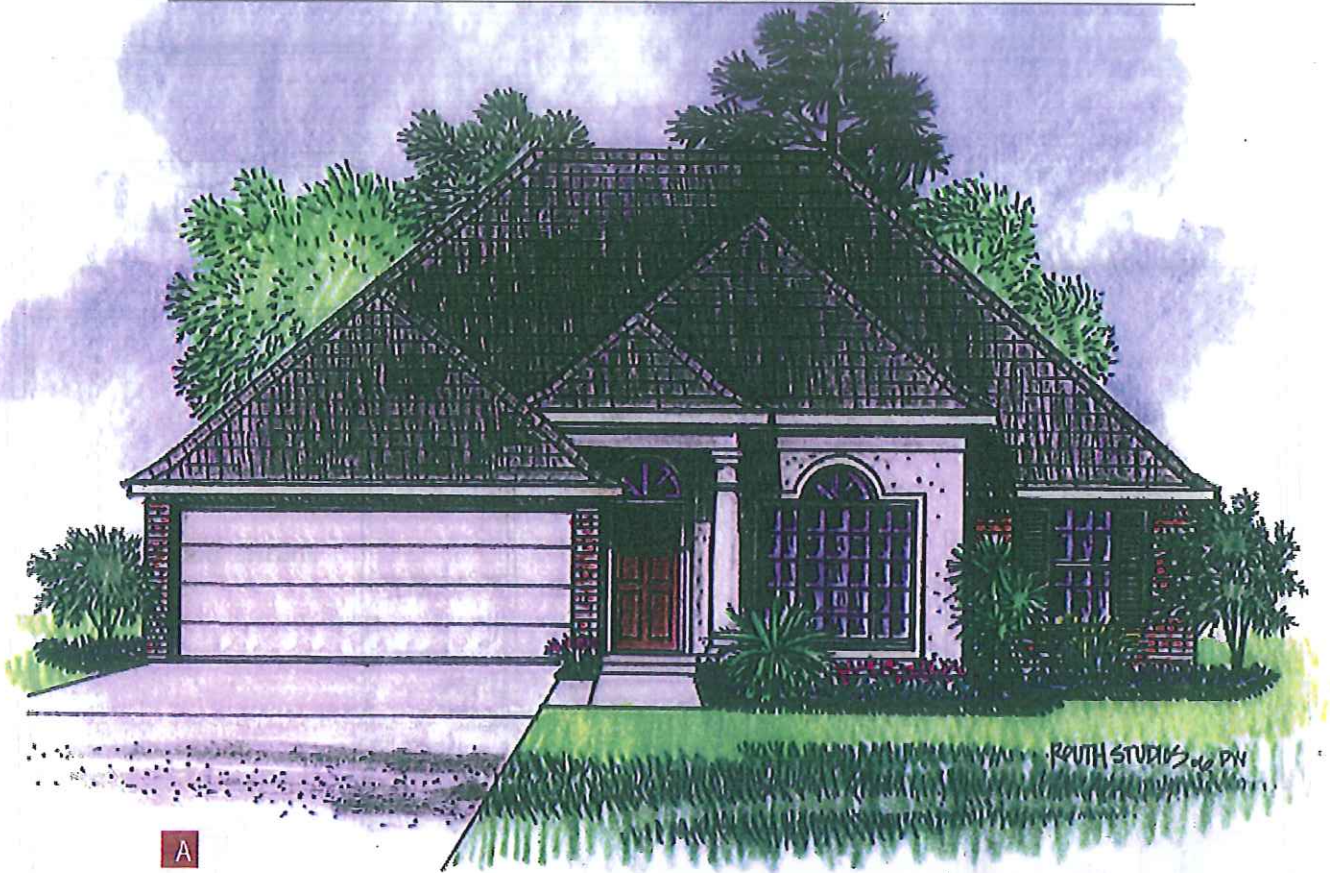


**LANDCRAFT
HOMES**

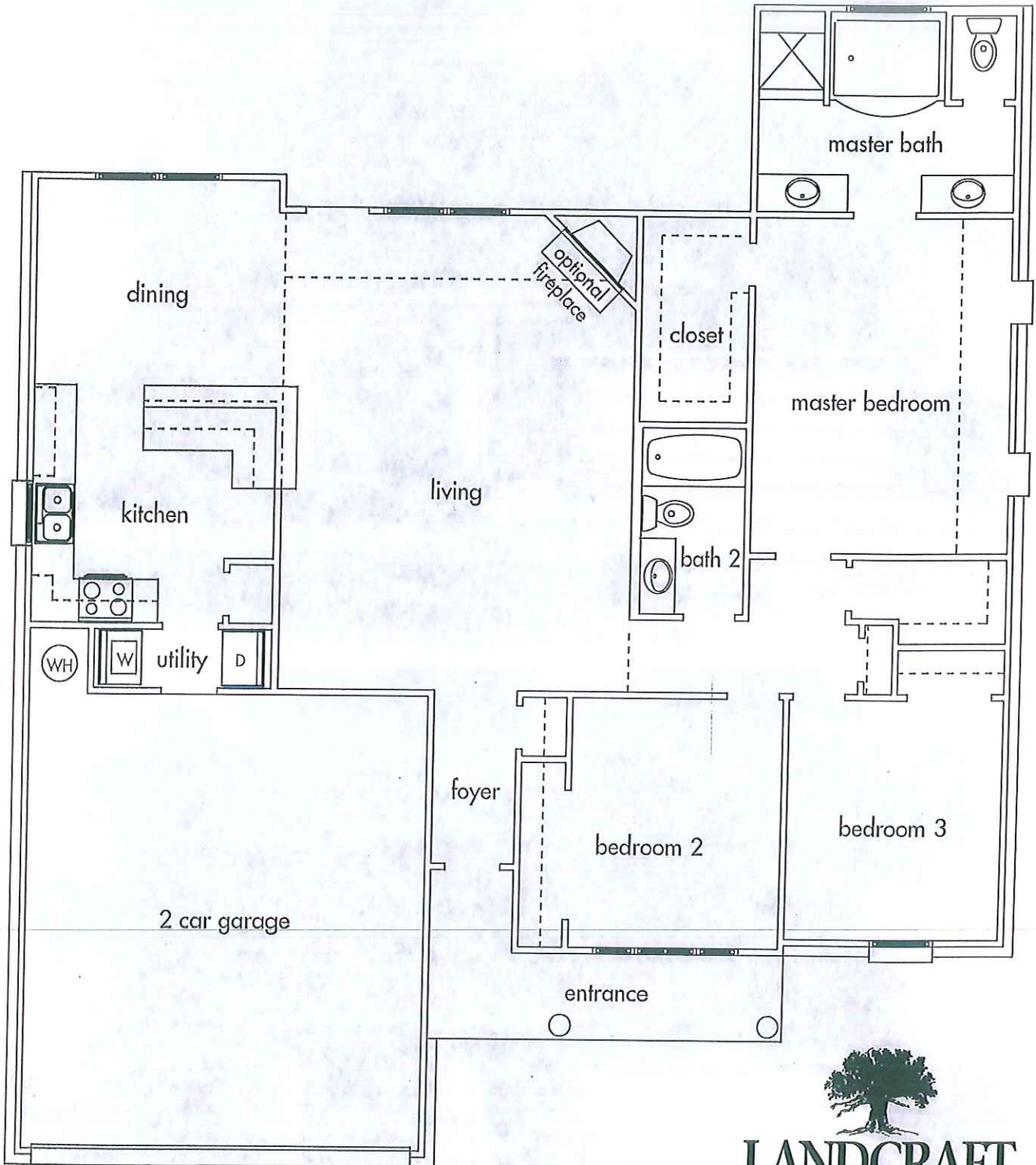
MODEL 1460—FLOOR PLAN



The drawings depicting the outside of these homes may vary slightly. The layouts and sizes indicated on the floor plans are approximate, and may also vary slightly. Specifications, products, and prices are subject to change without notice.



FRONT ELEVATIONS



**LANDCRAFT
H O M E S**

MODEL 1542-FLOOR PLAN



The drawings depicting the outside of these homes may vary slightly. The layouts and sizes indicated on the floor plans are approximate, and may also vary slightly. Specifications, products, and prices are subject to change without notice.



FRONT ELEVATIONS




**LANDCRAFT
H O M E S**
MODEL 1600—FLOOR PLAN

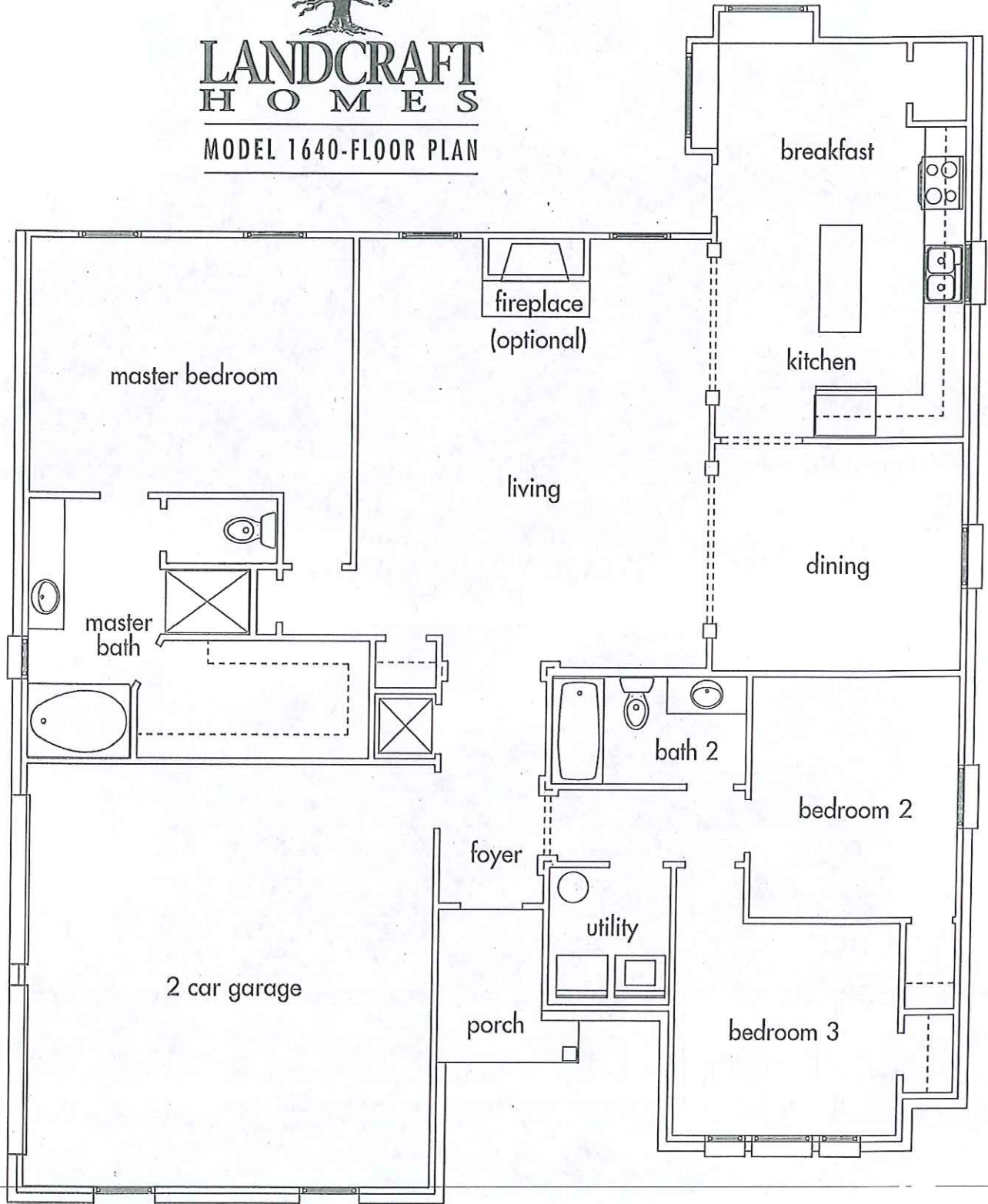






LANDCRAFT
H O M E S

MODEL 1640-FLOOR PLAN





A



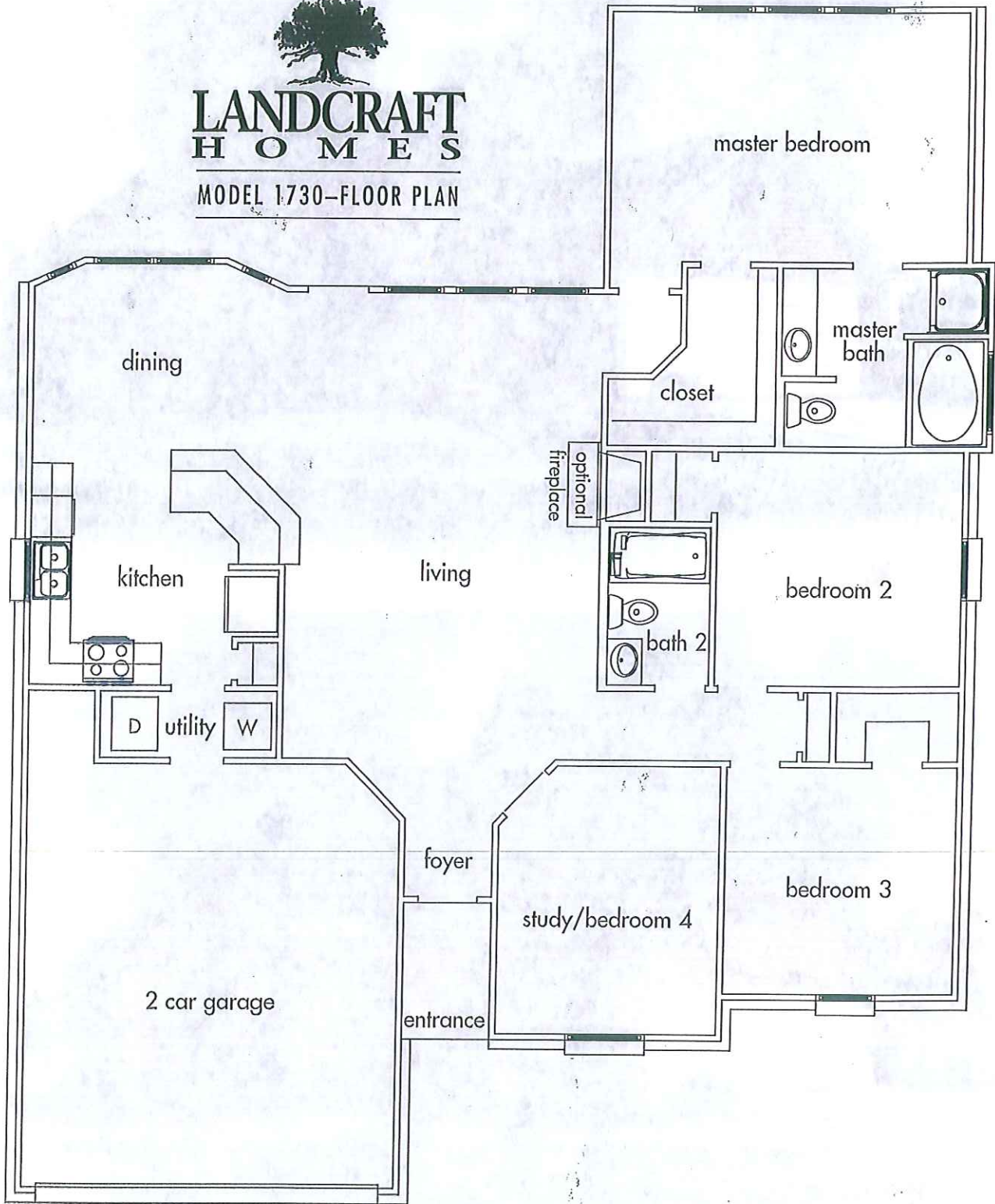
B

FRONT ELEVATIONS



**LANDCRAFT
H O M E S**

MODEL 1730—FLOOR PLAN



The drawings depicting the outside of these homes may vary slightly. The layouts and sizes indicated on the floor plans are approximate, and may also vary slightly. Specifications, products, and prices are subject to change without notice.