

POWDERED BY:

**sam**  
SKI AREA MANAGEMENT

TIMBERLINE



*Celebrating 15 years!*



**CLEANMOTION**  
MORE WITH LESS

# BISON X THE ULTIMATE XPERIENCE

## BISON X IS THE PERFECT FUSION OF PERFORMANCE AND POTENTIAL.

Driven by a relentless 400 HP (298 kW) Tier 4 final engine with **exceptional torque**, it combines **thrust & manoeuvrability** with **cab comfort** and **enhanced blade movement**. Every inch of this exceptional machine is engineered for park-building excellence. The Ultimate Xperience isn't just a slogan. It's a promise.

[prinoth.com](http://prinoth.com)

**Prinoth**





# SCHEDULE AT A GLANCE

## TUESDAY, MAY 16

10:00 a.m. - 4:00 p.m.  
10:00 a.m. - 4:00 p.m.  
12:00 p.m. - 4:00 p.m.  
5:00 p.m. - 6:00 p.m.  
6:00 p.m. - 11:00 p.m.

Registration  
Free Ski/Ride  
Grooming Demos  
Prinoth Fireside Chat  
Dinner and Burton Welcome Party

## WEDNESDAY, MAY 17

7:30 a.m. - 8:30 a.m.  
8:00 a.m. - 12:00 p.m.  
8:30 a.m. - 9:30 a.m.  
9:30 a.m. - 10:30 a.m.  
10:30 a.m. - 11:00 a.m.  
11:00 a.m. - 12:00 p.m.  
12:00 p.m. - 1:00 p.m.  
12:45 p.m. - 4:30 p.m.  
1:00 p.m. - 2:30 p.m.  
2:30 p.m. - 3:00 p.m.  
3:00 p.m. - 4:30 p.m.  
5:00 p.m. - 9:00 p.m.

Breakfast  
Block 1: On-hill Building  
Transition Events  
Freestyle Terrain Staff Guides and Training  
Morning Break  
Milestones and Holidays  
SPT Lunch  
Block 2: On-hill Building  
Risk Management: Day in the Life of a Park Manager  
Afternoon Break  
Park Tech Talks  
Prinoth Dinner & Annual Trip to Windells

## THURSDAY, MAY 18

7:30 a.m. - 8:30 a.m.  
8:00 a.m. - 12:00 p.m.  
8:30 a.m. - 10:15 a.m.  
10:15 a.m. - 10:30 a.m.  
10:30 a.m. - 12:00 p.m.  
12:00 p.m. - 1:00 p.m.  
12:45 p.m. - 4:30 p.m.  
1:00 p.m. - 2:45 p.m.  
2:45 p.m. - 3:15 p.m.  
3:15 p.m. - 4:15 p.m.  
6:00 p.m. - 11:00 p.m.

Breakfast  
Block 3: On-hill Building  
Park Challenge: Part One  
Morning Break  
Park Challenge: Part Two  
1Risk Lunch  
Block 4: On-hill Building  
Breakout Pods  
Afternoon Break  
Progression Session  
PistenBully Dinner & Annual Game of Sleds & Sumos

## FRIDAY, MAY 19

7:30 a.m. - 8:30 a.m.  
8:00 a.m. - 12:00 p.m.  
8:30 a.m. - 10:15 a.m.  
10:15 a.m. - 10:30 a.m.  
10:30 a.m. - 12:00 p.m.  
12:00 p.m. - 1:00 p.m.  
12:45 p.m. - 4:30 p.m.  
1:00 p.m. - 2:00 p.m.  
1:00 p.m. - 3:00 p.m.  
4:00 p.m. - 6:00 p.m.  
6:00 p.m. - 11:00 p.m.

Breakfast  
Block 5: On-hill Building  
Park Challenge: Part One  
Morning Break  
Park Challenge: Part Two  
HKD Snowmakers Lunch  
Block 6: On-hill Building  
Terrain Park Manager's Roundtable by Arena Snowpark  
Ski/Ride Timberline parks  
Nap Time  
Leica Geosystems Final Night Awards Dinner and Slideshow

## SATURDAY, MAY 20

7:00 a.m. - 9:00 a.m.  
9:00 a.m. - 3:00 p.m.

Final Breakfast  
Free Ski/Ride

# ATTENDEES



## **APEX MOUNTAIN RESORT, B.C**

Jaxon Rich, Groomer  
Pat Brunton, Groomer

## **APPALACHIAN, N.C**

Ric Wilkinson, Grooming Manager

## **ARAPAHOE BASIN, CO**

PJ Markow, Park Crew Lead  
Neil Powell, Park Groomer

## **ARIZONA SNOWBOWL, AZ**

Ryan Clifford, Terrain Park Crew Lead

## **BIG SKY, MT**

Alex Syverson, Park Operator

## **BOYNE HIGHLANDS, MI**

Zach Hopkins, Terrain Park Groomer

## **BOYNE MOUNTAIN, MI**

Corey Schroeder, Terrain Park Manager

## **BRECKENRIDGE, CO**

Matt Adams, Park & Pipe Groomer

## **GROUSE MOUNTAIN, BC**

Matt Rippon, Equipment Ops Supervisor  
Shaw Butterworth, Grooming Supervisor

## **LAKE LOUISE, AB**

Andrew Paszt, Operator, Park Groomer

## **LIBERTY MOUNTAIN, PA**

Brian Sherrill, Trail Groomer

## **LOOKOUT PASS, ID**

Justin Stegmann, Terrain Park Manager

## **LOST TRAIL/POWDER MOUNTAIN, ID**

Nathaniel Wilson, Asst. Park Manager  
Zach Westfall, Park Manager

## **MOUNTAIN HIGH, CA**

Scott Speers, Grooming Manager  
Jack Firner, Grooming Supervisor  
Rick VanDemark,  
Asst. Terrain Park Manager

## **MT. ASHLAND, OR**

TJ Miller, Grooming Supervisor  
Parker Gokey, Terrain Park Supervisor

## **MT. HOOD MEADOWS, OR**

John Ogletree, Park Hand Crew Supervisor

## **MT. SHASTA SKI PARK, CA**

Josh McClellan, Groomer

## **MT. SPOKANE, WA**

Hudson Petek, Builder  
Alec Ferraro, Leader Park Cat Operator

## **NUB'S NOB, MI**

Ryan Moore, Terrain Park Manager/Builder  
Trevor Vandenbrink, Terrain Park Crew

## **OBER GATLINBURG, TN**

Avery Beckmann, Terrain Park Manager





# ATTENDEES

## **POWDER MOUNTAIN, UT**

Mitchell Shaum, Terrain Park Manager  
Nate Rogers, Groomer  
Justin Powell, Terrain Park Builder

## **PUGATORY, CO**

Erik Santiago, Park Operator

## **RED MOUNTAIN, BC**

Troy Colautti, Grooming Supervisor  
Zac Lumsden,  
Head of Terrain Park & Snowmaking

## **SCHWEITZER, ID**

Tyler Wahlin, Lead Park Ranger

## **SIERRA NEVADA, SPAIN**

Ricardo Castro Martinez,  
Terrain Park Manager

## **SILVERSTAR, BC**

Paul Kenward,  
Events & Terrain Park Manager

## **SNOWBASIN, UT**

Vince Hanson,  
Assistant Terrain Park Manager

## **SNOWBIRD, UT**

Dennis Durrant, Terrain Park Supervisor  
Luigi Haslam, Terrain Park Attendant

## **SNOWSHOE, WV**

Brandon Cline, Grooming Supervisor  
Kyle Tunison, Terrain Park Groomer  
Philip Yates,  
Bike and Terrain Parks Manager

## **STEVENS PASS, WA**

Chris Ball, Parks Supervisor  
Jesse Harbour, Parks Supervisor

## **SUGARBOWL, CA**

Kirk Borodaeff, Park Crew

## **SUN VALLEY, ID**

James Sherrill, Park Builder

## **SUNDANCE, UT**

Cameron Fawson, Terrain Park Foreman  
Blake Stephenson, Terrain Park Supervisor

## **SUNSHINE VILLAGE, AB**

Max Middlestadt, Park Grooming  
Isaac Fairfield, Assistant Supervisor

## **TELLURIDE, CO**

Chris Meyer, Terrain Park Manager

## **SUMMIT AT SNOQUALMIE, WA**

Cullen Ransier, Terrain Park Groomer  
Cameron Strecker, Day Crew Supervisor

## **WINSPORT, AB**

Connor Owen, Park Builder/Park Groomer

## **YELLOWSTONE MOUNTAIN CLUB, MT**

Dillion Stasevich, Cat Operator  
Matt Bruns, Park Manager



Photo: Jennifer Langille

# BURTON RIGLET SNOWBOARDING



**RESEARCH SHOWS THAT  
THE YOUNGER THEY START,  
THE GREATER THEIR  
LIFETIME SPEND**

With a full line of kids products and teaching tools designed to make the learning process easier anywhere, Burton Riglet Snowboarding helps get the youngest of kids started.

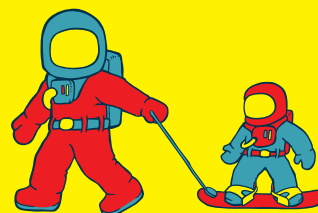


Photo: Greg Comollo



**LEARN MORE**

contact [resortinfo@burton.com](mailto:resortinfo@burton.com)  
or visit the Burton booth at the National Convention.



**BURTONRIGLET.COM**

# TUESDAY, MAY 16



# CAMP AGENDA

10:00 a.m. - 4:00 p.m.	Barlow Room	<b>Attendee Registration</b>
12:00 p.m. - 4:00 p.m.	Outside of Ullman Hall	<b>Grooming Demos</b> Reps from PistenBully, Prinoth, SNOWsat and Leica will be on hand to provide demos and answer questions about their latest grooming machines and snow depth technology.
10:00 a.m. - 3:00 p.m.	On-Hill	<b>Free Ski and Ride</b> Campers are welcome to ski and ride Timberline and check out the Timberline parks. Your badge will serve as your lift ticket and get you rental gear.
5:00 p.m. - 6:00 p.m.	Raven's Nest  <i>Logan Stewart, Timberline</i> <i>Elia Hamilton, Peak Resorts</i> <i>Kevin Lavery, Keystone</i> <i>Jay Scambio, Boyne Resorts</i> <i>Ken Gaitor, Snowshoe</i> <i>Elliot Cone, SPT</i>	<b>Fireside Chat by Prinoth</b> How do you turn your passion into a successful career? Industry leaders will share their stories of memorable moments, lessons learned, biggest risks, and pieces of advice, game-show style.  
6:00 p.m. - 11:00 p.m.	Barlow Room and Blue Ox Bar	<b>Dinner and Burton Welcome Party</b> Good cheer and cold beer.  

THE MISSION OF CUTTER'S CAMP IS TO FOSTER DISCUSSION WITH OTHERS IN YOUR FIELD, SHARE LEADING PRACTICES, AND BE INSPIRED TO RUN SUCCESSFUL TERRAIN PARKS.

**sam**  
SKI AREA MANAGEMENT





# CAMP AGENDA



## WEDNESDAY, MAY 17

7:30 a.m. - 8:30 a.m.	Cascade Dining Room	<b>Breakfast</b>
8:00 a.m. - 12:00 p.m.	Ullman Hall Patio	<b>ON-HILL BUILDING: BLOCK 1</b> Campers who are signed up for Block 1, please meet your coach outside Ullman Hall on the patio promptly at 8:00 a.m. You will discuss your on-hill goals for a few minutes before heading out on-hill.
8:30 a.m. - 9:30 a.m.	Ullman Hall <i>Steve Petrie, Arena Snowparks</i> <i>Elia Hamilton, Peak Resorts</i> <i>Ken Gaitor, Snowshoe</i>	<b>Transition Events</b> Bowls and hips and transitions, oh my! Terrain Park events inspired by skateboarding and surfing are rapidly gaining popularity. And it takes creativity to build them. Steve Petrie of Arena Snowparks will share inspiration from his Holy Bowly build at Lake Louise; Elia Hamilton of Peak Resorts talks about the annual Red Bull All Snow; and Ken Gaitor shows off Snowshoe's Berming Man Banked Slalom event.
9:30 a.m. - 10:30 a.m.	Ullman Hall <i>Mistica Walker and Timothy Yates, Safehold Special Risk</i> <i>Elia Hamilton, Peak Resorts</i> <i>Kevin Laverty, Vail Resorts</i>	<b>Freestyle Terrain Staff Guides &amp; Training</b> Park experts and insurance specialists will discuss why and how you develop your own dedicated freestyle terrain staff guide. The handbook should cover the specifics of daily park operations and be a quick reference for you and your crew to understand the priorities for your park department. Sometimes these guides even include training modules. The panelists will cover where to find good resources for creating a terrain park operations guide and offer several excellent examples.
10:30 a.m. - 11:00 a.m.	Morning Break	<b>Morning Break</b>
11:00 a.m. - 12:00 p.m.	Ullman Hall <i>Mike Bettera, SPT</i>	<b>Milestones &amp; Holiday Weeks</b> Once upon a time, terrain parks were built when natural snowfall or snowmaking conditions permitted. Rarely did construction coincide with guest visitation trends; the large park was always the first priority, with small/progression parks following as timing and resources allowed. Today, park builders follow more strategic business practices. Learn what has changed, why it has changed, how you as a manager can plan your season's build, and what the future may look like. Snow Park Technologies (SPT) will share its best practices and present examples of areas that are doing it right and reaping the rewards—and most importantly, describing the benefits to guests and resorts alike.
12:00 p.m. - 1:00 p.m.	Wy'East Day Lodge	<b>Snow Park Technologies Lunch</b>  <b>SNOW PARK TECHNOLOGIES</b>
12:45 p.m. - 4:30 p.m.	Ullman Hall Patio	<b>ON-HILL BUILDING: BLOCK 2</b> Campers who are signed up for Block 2, please meet your coach outside Ullman Hall on the patio promptly at 12:45. You will discuss your on-hill goals for a few minutes before heading out.

# WEDNESDAY, MAY 17

1:00 p.m. - 2:30 p.m.

Ullman Hall

*Mistica Walker and Timothy Yates, Safehold Special Risk; Ruth Nielsen, Keating, Bucklin & McCormack; Brian Rosser and Jason Kartchner, MountainGuard*

## **Terrain Park Documentation: Day in the Life of a Park Manager**

A comparative practicum in documentation practices during daily operations. Campers will share how the park crew manages working in the park with completing documentation and the challenges this environment presents. We will compare levels of techniques, tools, and innovations for park documentation. We will then shift into the importance of this documentation related directly to claim and suits with legal counsel.

2:30 p.m. - 3:00 p.m.

Afternoon Break

**Afternoon Break**

3:00 p.m. - 4:30 p.m.

Ullman Hall

*Lukas Ingold, Leica Geosystems Charles Mickley, 1Risk Colin Hales, PistenBully*

## **Park Tech Talks**

Three different Park Tech Talks will be presented, covering the new technologies available to park managers.

Topics of discussion:

- Park efficiencies, both in cost and time management
- Park planning, determining snow depth and how much snow it will take for your project
- Park logs and accident investigation

5:00 p.m. - 9:00 p.m.

Windells

## **Prinoth Dinner and Fun at Windells**

We head to Windells, the "Funnest" place on earth, where your options are to skateboard, trampoline, BMX, and participate in the annual Prinoth Dodgeball Tournament... If you can dodge a snowcat, you can dodge a ball! BUSES LEAVE FROM IN FRONT OF THE LODGE PROMPTLY AT 5PM.

*Prinoth*

# THURSDAY, MAY 18

7:30 a.m. - 8:30 a.m.

Cascade Dining Room

**Breakfast**

8:00 a.m. - 12:00 p.m.

Ullman Hall Patio

## **ON-HILL BUILDING: BLOCK 3**

Campers who are signed up for Block 3, please meet your coach outside Ullman Hall on the patio promptly at 8:00 a.m. You will discuss your on-hill goals for a few minutes before heading out.



CAMP AGENDA

# THURSDAY, MAY 18

## CAMP AGENDA



8:30 a.m. - 9:15 a.m.	Ullman Hall <i>Logan Stewart, Timberline; Elia Hamilton, Peak Resorts; Kevin Lavery, Keystone; Ken Gaitor, Snowshoe; Jay Scambio, Boyne Resorts</i>	<b>Park Challenge Part I: Debrief</b> Campers will be divided into four teams to complete a specified park challenge. Coaches will provide an overview of the challenge, and teams will work to create an outline of their solution.  The challenge will present curve balls that the teams must work through. Teams will work together to address a list of objectives. During part one, teams will brainstorm creative solutions, and then break into mini teams that will tackle different parts of the challenge, using our expert stations (see Part II, below).
9:15 a.m. - 10:15 a.m.	Ullman Hall <i>Logan Stewart, Timberline; Elia Hamilton, Peak Resorts; Kevin Lavery, Keystone; Ken Gaitor, Snowshoe; Jay Scambio, Boyne Resorts</i>	<b>Park Challenge Part II: Consulting Stations</b> Mini teams will meet with experts on hand to help problem-solve. At the conclusion, the entire team will reconvene to put together its final recommendations and present to the group.  <b>Consulting Stations:</b> <ul style="list-style-type: none"> <li>- Risk management</li> <li>- Jump measurements, feature mix</li> <li>- Human resources</li> <li>- Accident investigation and logs</li> <li>- Snowmaking/snow depth calculators</li> </ul>
10:15 a.m. - 10:30 a.m.	Morning Break	<b>Morning Break</b>
10:30 a.m. - 12:00 p.m.	Ullman Hall	<b>Park Challenge Part III: Presentations &amp; Group Discussions</b> Each of the four teams will present its solutions/recommendations to the group, followed by a Q&A with the coaches.
12:00 p.m. - 1:00 p.m.	Raven's Nest	<b>1Risk Lunch</b> 
12:45 p.m. - 4:30 p.m.	Ullman Hall Patio	<b>ON-HILL BUILDING: BLOCK 4</b> Campers who are signed up for Block 4, please meet your coach outside Ullman Hall on the patio promptly at 12:45. You will discuss your on-hill goals for a few minutes before heading out.
1:00 p.m. - 2:45 p.m.	Ullman Hall	<b>Breakout PODS</b> The topics below will be arranged in small breakout pods led by industry leaders. Campers choose topics of interest and get answers to their burning questions. Lightning round setup ensures that campers get a chance to hit four of the pod discussions.

### BREAKOUT PODS

#### EVENTS AND SOCIAL MEDIA

Whether it's a small, local contest or a full-scale competition, planning and preparation are key to success. Marketing and event specialists will share ideas on how to facilitate events of all sizes.

#### SNOW SCIENCE AND SNOWMAKING IN THE PARK

Terrain parks use the most snowmaking on the mountain. Learn how to plan and communicate your needs and maximize what you've got.

#### VEHICLE MAINTENANCE

What are the most important things to know to get the most from your machines? What are the stresses and forces to avoid? What is recommended for a daily walk-around routine for park operators. Or, ask your own questions of the experts on hand.

#### PLANNING AND COMMUNICATION

Writing a business plan for your park, designing and balancing a budget, and how to effectively communicate your needs to upper management.

#### FEATURE CONSTRUCTION


Take-offs and landings. Spacing and flow. Pipes and walls. Working the snow for consistency and longevity. How to begin (the set-up) and how to finish your feature.

#### SAFETY AND RISK MANAGEMENT

Signage, Freestyle Terrain Notebook, guest education, accident investigation, testing protocols, logs-bring your burning questions to experts or hear from your colleagues.



# THURSDAY, MAY 18

2:45 p.m. - 3:15 p.m.	Afternoon Break	Afternoon Break
3:15 p.m. - 4:15 p.m.	Ullman Hall <i>Chris Hargrave, Windells / Snow Operating Shaun Cattnach, Burton</i>	<b>The Serious Business of Progression</b> Your park is a business and having a plan to grow your customer base is essential. Learn about several successful programs that build a progression plan using the principles of fun and a stress-free environment. These programs cater to the very young, women, and adults wanting to get in on the fun of freestyle terrain.
6:00 p.m. - 11:00 p.m.	Wy'East Day Lodge	<b>PistenBully Dinner</b> Do you have what it take to compete in the PB Games?! Can you hang with PB in agility, reflexes, and overall maneuverability,... are you tough and reliable?? Then put your suit on and box, wrestle & ride. Show us what you got! 

# FRIDAY, MAY 19

7:30 a.m. - 8:30 a.m.	Cascade Dining Room	Breakfast
8:00 a.m. - 12:00 p.m.	Ullman Hall Patio	<b>ON-HILL BUILDING: BLOCK 5</b> Campers who are signed up for Block 5, please meet your coach outside Ullman Hall on the patio promptly at 8:00 a.m. You will discuss your on-hill goals for a few minutes before heading out.
8:30 a.m. - 9:15 a.m.	Ullman Hall <i>Logan Stewart, Timberline; Elia Hamilton, Peak Resorts; Kevin Laverty, Keystone; Ken Gaitor, Snowshoe; Jay Scambio, Boyne Resorts</i>	<b>Park Challenge Part I: Debrief</b> Campers will be divided into four teams to complete a specific park challenge. Coaches will provide an overview of the challenge, and teams will work to create an outline of their solution.  The challenge will include curve balls that the teams must work through. Teams will work together to address a list of objectives. During part one, teams will brainstorm creative solutions and then break into mini teams that will tackle different parts of the challenge using our expert stations (see Part II, next page).



# CAMP AGENDA

# CAMP AGENDA



## FRIDAY, MAY 19

9:15 a.m. - 10:15 a.m.	Ullman Hall <i>Logan Stewart, Timberline; Elia Hamilton, Peak Resorts; Kevin Laverty, Keystone; Ken Gaitor, Snowshoe; Jay Scambio, Boyne Resorts</i>	<b>Park Challenge Part II: Consulting Stations</b> Mini teams will meet with experts on hand to help problem-solve. At the conclusion, the entire team will reconvene to put together its final recommendations and present to the group (see Part III, below).  <b>Consulting Stations:</b> - Contests & Events - Human resources - Handbooks for staff - Jump measurements, feature mix - Snowmaking/snow depth calculators
10:15 a.m. - 10:30 a.m.	Morning Break	<b>Morning Break</b>
10:30 a.m. - 12:00 p.m.	Ullman Hall	<b>Park Challenge Part III: Presentations &amp; Group Discussions</b> Each of the four teams will present its solution to the group. Coaches will lead an all-group discussion about creative ideas presented and lessons learned.
12:00 p.m. - 1:00 p.m.	Raven's Nest	<b>HKD Lunch</b> 
12:45 p.m. - 4:30 p.m.	Ullman Hall Patio	<b>ON-HILL BUILDING: BLOCK 6</b> Campers who are signed up for Block 6, please meet your coach outside Ullman Hall promptly at 12:45. You will discuss your on-hill goals for a few minutes before heading out.
1:00 p.m. - 2:30 p.m.	Ullman Hall <i>Ken Gaitor, Snowshoe</i>	<b>Terrain Park Manager's Roundtable</b> Come prepared to share with the group in this facilitated, but informal, discussion for park managers. This year's discussion will focus on staffing and team management. 
1:00 p.m. - 3:00 p.m.	On Hill	<b>Free Ski/Ride</b>
3:00 p.m. - 6:00 p.m.	Nap Time	<b>Nap Time</b>
6:00 p.m. - 11:00 p.m.	Ullman Hall	<b>Leica Geosystems Final Night Dinner</b> Leica will treat us to a feast as we watch a slideshow from the week. We present our camp awards and the annual Cutter's Camp Education Grant presented by Safehold Special Risk. 

## SATURDAY, MAY 20

7:30 a.m. - 9:00 a.m.	Cascade Dining Room	<b>Breakfast</b>
9:00 a.m. - 3:00 p.m.	On-Hill	<b>Free Ski/Ride</b>

# 1RISK | PARK SUITE

1RISK's Park Suite of tools - the **Park Manager** and the **Park Builder** - allows managers to control and view every operation of their Terrain, Bike, and Adventure Parks.

## **Park Manager:**

*Controls the daily layout of your parks and all routine maintenance activities by park crew.*

- ✓ 4 Season Park Operations
- ✓ Map all of the features on a Google Map of the Trail or Park
- ✓ Feature Notebooks allows you to record all the details of each park feature
- ✓ Create custom logging for activities, time spans, detailed notes, crew, conditions and even images
- ✓ All records/logs can be printed in detail and can include historical park layouts
- ✓ Park data integrates into Incident Tracking tools real time

## **Park Builder:**

*Whether you are building a feature or a park, Park Builder allows operations to record a consistent set of processes and procedures that encompasses a comprehensive audit of all build activities from initial concept to opening.*

- ✓ Quick access to all current and historical build data
- ✓ Current Build Status indicators, everyone knows the current build status
- ✓ Customize build Milestones specific to park/feature types for your operations
  - Signature control for Milestone completion
  - Create Alerts and Notifications for Milestone completion
  - Milestone Notes and comments are recorded
  - Documents and Images can be saved per Milestone
- ✓ Document staff and equipment
  - Estimate time and material costs
  - Actual time and material costs for real time differentials
  - Improve estimates by having historical data
- ✓ Chart your builds
- ✓ Export a complete Park Build report as a PDF





## Mike Bettera | Snow Park Technologies

For more than a decade, Mike Bettera has worked as the director of operations for SPT's Mountain Division. He works closely with resort partners in an effort to keep them current on industry trends, as well as the creation of new, innovative projects and park offerings. He is involved in on-mountain operations, business strategy, park data and metrics, guest experience initiatives, risk management, marketing, and training. Mike's specialty is signature resort projects and programs, including the Squaw Valley Peace Park, The Streets at Seven Springs, Burton Stash parks, and Burton Progression Parks. He has worked with more than 30 resorts around the globe, is a former head coach at Waterville Valley, and has served as a judge at events including the Burton US Open.

mike@snowparktech.com

## Shaun Cattanaach | Burton Snowboards

Shaun develops and oversees expansion programs for key markets, with a major focus on Asia. He also oversees product development for Learn To Ride and Rental products, and implements training programs for resort and rental dealers as well as internal sales teams. In addition to planning and executing sales and training events, he write scripts and produces training and consumer videos as well as dealer collateral. Shaun has been an examiner for the American Association of Snowboard Instructors since 1998, and was a national team member of the American Association of Snowboard Instructors from 2000 to 2004.

shaunc@burton.com

## Elliot Cone | Snow Park Technologies

Elliot has been a project manager and lead operator for SPT since 2007. Throughout his 23 years as a snowcat operator, Elliot has been involved in the planning and build processes for some of the industry's biggest events, including Winter Dew Tour, X Games Aspen, Burton U.S. Open, Burton Peace Park, The Great Slope Style in Japan, Red Bull Training Camps, and the European Open in Italy. In the midst of the four events he typically manages during a season, Elliot has been a crucial part of the SPT Park Program through his many build collaborations with SPT's 14 partner resorts. Prior to his tenure with SPT, Elliot oversaw the Breckenridge terrain parks for nearly 10 years, and managed Keystone's terrain parks for three years.

## Ken Gaitor | Snowshoe

Ken grew up playing on the mountains of West Virginia and started skating everything he could in 1985. He moved to the Northeast for college and began building small parks wherever possible. In '97, he moved west and became Brighton's park manager, working there for six years. In '03 he moved back east, working as Mount Snow's freestyle terrain manager until 2009. In 2010, Ken returned to the wild and wonderful state of West Virginia to become Snowshoe's director of ski operations. In this role he oversees the building of its five terrain parks, as well as the mountain's snowmaking, grooming, lifts, vehicle, and patrol departments. Ken attributes his wildly successful rise to the top to his facial hair and one-liners.

kgaitor@snowshoemountain.com

## Elia Hamilton | Peak Resorts

Elia began building jumps for his Tonka trucks as early as he can remember. He was eventually kicked off the school ski team in '92 for skipping practice to build jumps, and started building professionally at Mount Snow in 1998. Elia became the director of freestyle terrain for American Skiing Company in 2003, and in 2005 became the mountain manager at Mount Snow. Elia was appointed director of freestyle terrain for Peak Resorts in 2011, and is now VP of terrain development. He's doing his part to change the way people experience snow resorts. Elia has also dedicated much of his adult life to rebuilding his vintage motorcycle and sidecar. His goal: to race in next year's Feline Sidecar Championships, with his cat Whiskey. He's desperately looking to hire an assistant mechanic to help get him to the championships. Email resumes to

ehamilton@peakresorts.com.

## Chris Hargrave | Windells Academy

A 20-year industry veteran (even though he still looks like he's 18), Chris is known for his work on and development of the Burton Snowboard Academy at Northstar California and his role as director of operations at Woodward Tahoe. He is also a member of the AASI National Team and the author of the PSIA/AASI Freestyle Manual. Until being appointed president of Windells Academy, Chris consulted for SNOW Operating, helping to design many Terrain-Based Learning programs. Chris is best known for his passion for teaching people. Whatever you want to learn, Chris will literally break it down into three steps.

chris@windellsacademy.com



# PANELISTS & COACHES

## Todd Hermesen | Leica Geosystems

Todd Hermesen is the U.S. technical lead for Leica Geosystem Machine Control Division. Todd has been employed in the industry for eleven years. For the last eight years, he has worked with machine guidance systems for Leica. Todd is dedicated to partnering with clients to maximize productivity by implementing cutting edge positioning technologies. [todd.hermesen@leicaus.com](mailto:todd.hermesen@leicaus.com)

## Jason Kartchner | MountainGuard

Jason joined MountainGuard in 2016 as a claims and loss control specialist. He handles claims, manages litigation, and conducts site inspections and on-site trainings. Before joining MountainGuard, Jason was the risk manager and corporate counsel for a petroleum distributor in the Northwest. Before law school, Jason was the risk manager at the Yellowstone Club in Big Sky, MT. His ski industry career started as a patroller for Brian Head Resort, UT, where he eventually became the assistant patrol director/snow safety director. [Jason.Kartchner@WillisTowersWatson.com](mailto:Jason.Kartchner@WillisTowersWatson.com)

## Kevin Lavery | Keystone

Kevin grew up in New Jersey riding Mountain Creek. He started working at Heavenly in '06, and then as park crew in summer '07 for New Zealand's Cardrona Alpine Resort. After many back-to-back seasons in New Zealand and Tahoe, he moved to Colorado, where he's currently the Keystone terrain park manager and terrain park best practice lead for Vail Resorts. He's worked on projects such as the Burton NZ Open, Junior World Championships Cardrona, Superpark, Ms. Superpark, Dew Tour Street, FIS World Cups, and Winter X Games. Kevin spends his spare time wandering the Colorado wilderness looking for traces of the exocytic black squirrel. It's been a life-long dream of his to cross-breed the Colorado black squirrel and the desert hopping mouse so he can start his own squirrel-mouse circus. [KLavery@vailresorts.com](mailto:KLavery@vailresorts.com)

## Benny McGinnis | Mount Snow

Benny was born and raised in Asheville, NC. He loved the sunshine so much that he moved to Lake Tahoe in 2002, where he began working at Sierra at Tahoe. He's been operating snowcats for 15 years; most of his time has been spent in terrain park design and construction. He was the terrain park department manager at Sierra at Tahoe for three years before moving back east to Mount Snow, where he is currently the freestyle terrain manager for Carinthia parks. [BMcGinnis@mountsnow.com](mailto:BMcGinnis@mountsnow.com)

## Charles Mickley | 1Risk

Charles is the founder and president of 1RISK LLC, a risk management data solutions company serving the adventure and sports industry. He has more than 25 years experience in the information technology, software development, data solutions, and mobile device industries. He and his partners have created a suite of software products that provide easy and efficient methods of data collection, allowing resorts and businesses to better track and analyze data related to the adventure industry. Charles enjoys working with business operations to invent new and better technologies centered on the mobile device platform. [cmickley@1risk.com](mailto:cmickley@1risk.com)

## Matt Melilli | Diamond Peak

Matt is currently the slope maintenance manager at Diamond Peak, NV. He started his park career as the terrain park building supervisor at Keystone from 2007 to 2011. During that time, he was part of major events, including various *Snowboarder* Magazine Superparks, The Launch events, Dew Tour builds, U.S. Open, Ms. Superpark Events, and the *Transworld* Team Shootout. After Keystone, Matt moved to Tahoe to become snow operations manager at Boreal/Woodward Tahoe until recently joining Diamond Peak. Throughout his career, Matt has built for a variety of industry photo shoots with Poor Boys Productions, Matchstick, Level 1, Adidas, Nike, Neff, and *Snowboarder* and *Transworld Magazine* movies.

**sam**  
SKI AREA MANAGEMENT





## Ruth Nielsen | Keating, Bucklin & McCormack

For the past 25 years, Ruth has worked as an attorney specializing in defending ski areas and other outdoor recreation businesses, including manufacturers of skis and snowboards. She is the past president of the Association of Ski Area Defense Attorneys, and is a frequent speaker on liability issues at national and local ski area association meetings. Ruth is an avid backcountry skier and snowboarder and has enjoyed some of the best secret powder stashes in the Northwest. She loves dogs and tattoos. No really, ask to see her dog tattoo.

rnielsen@kbmlawyers.com

## The SAM Magazine Staff: Olivia Rowan, Liz Mettler & Sarah Ebbott

Olivia is the publisher/owner of SAM, Liz is associate editor and Sarah is marketing, circulation and research manager. All three grew up on the East Coast, skiing since they could fit in backpacks. In their spare time, Olivia makes sweaters for her chickens, Liz works on her community TV program called, "Toddlers, Tiaras and Tiny Horses" and Sarah can be found in her tiny house baking mini muffins.

olivia@saminfo.com

liz@saminfo.com

sarah@saminfo.com

## Brian Norton | Loon, N.H.

Brian started working at Loon in 2001. He began as a part-time liftie, and within his first season transitioned into a role within the terrain park. He became park manager in 2006. In addition to the day-to-day operations of manager, Brian and his team have also taken part in several major photo and video shoots, including five trips to *Snowboarder* Magazine's Superpark. Currently, Brian spends part of the season working as Boyne Resorts' terrain park surfaces manager, and spends his time overseeing park-specific snowcat operator training along with general park maintenance and build procedures.

Bnorton@loonmtn.com

## Steve Petrie | Arena Snowparks

Steve arrived in Whistler in the early '90s looking for a job that would allow him to snowboard as much as possible. In 1994 he took a job on Blackcomb Mountain as a groomer—that also happened to be the first year the mountain was building a terrain park. Almost immediately, he knew he had found his passion. After 11 years of working back-to-back winters and summers, developing his park-building skills and logging thousands of hours operating snowcats, he decided it was time for a new challenge. In 2004, Arena Snowparks was founded. Since then, the ASP team has traveled the world, building terrain parks, half pipes, snowcrosses, and events, including the 2010 and 2014 Winter Olympics.

steve@arenasnowparks.com

## Jay Rydd | Diamond Peak

Jay is currently the mountain ops manager at Diamond Peak. He started in the industry there in 1991 when he began building parks by hand. In the mid '90s he worked his way into a cat and never looked back. In his early years he helped Diamond Peak develop its first park as the slope maintenance manager. At various times he's worked as the lead park builder for Sugar Bowl, CA, Mountain Creek, NJ, and Heavenly, CA. He also co-owned the Kingvale Terrain Project on Donner Summit for five years. For the last six years, before returning to Diamond Peak, he worked for PistenBully, helping with design, sales, and training across the country. Jay is also tall, dark, and mysterious. We're pretty sure he's a big teddy bear underneath, but we're honestly too intimidated to ask.

jay@ivgid.org

## Jay Scambio | Boyne Resorts

Jay has been working in the industry for more than 17 years, starting as a part-time coach and developing competitive snowboard programs at Loon. He started running Loon's park program in '02 and has been involved with parks ever since. He's currently director of mountain sports development for eight resorts at Boyne USA. In addition to oversight and development of all aspects of the parks at each resort, he oversees the development for Boyne's snowsports and adventure sports divisions. Little known fact: Jay spends roughly 90 minutes each morning rubbing baby oil onto that beautiful bald head of his, just to get the right amount of shine and softness. And he loves it when people rub it for good luck, so don't be shy!

jscambio@boyneresorts.com

## Ben Siefert | HKD Snowmakers

Ben joined HKD in 2015 as part of its western sales team. Prior to joining HKD, Ben worked six years with TechnoAlpin, focusing on snowmaking automation and fan and tower gun technical support. Ben has skied since the age of three, and is a committed and passionate outdoor enthusiast. On occasion he can be found at "Thirsty Thursdays" in Park City, discussing the various details of snowmaking strategy.

ben@hkdsnowmakers.com

## Nik Symon | Breckenridge

Nik has been with Breckenridge for 18 years, 17 of those building and shaping halfpipes. He spent the summer of '07 in New Zealand, building and cutting for Snowpark, NZ. In 2007 he won the Colorado Ski Country Terrain Master of the Year award. Nik has been part of numerous events, such as Vans Triple Crown, Grand Prix, Honda Ski Tour, Bourton Open NZ, Gravity Games, BMW Tour, Honda Ski Tour, and Dew Tour for the last 10 years.

nicholas.symon@gmail.com





# PANELISTS & COACHES

## Brian Rosser | MountainGuard

Brian joined the MountainGuard team as director of risk management and education in 2016. He is responsible for the continued development, coordination and execution of loss control service plans. Brian is a licensed attorney and has worked at a number of ski resorts in the Southeast and Colorado. He has a degree in ski area operations from Colorado Mountain College. His experiences have included lift maintenance, teaching/coaching, patroller, risk manager, grooming, snowmaking, incident investigation, and the development of terrain park procedures.

Brian.Rosser@WillisTowersWatson.com

## Phillip Van Why | HKD Snowmakers

Philip is a master electrician, gearhead, and HKD Snowmakers' technical guru in the West. Phil can make snow at Breckenridge and Copper Mountain simultaneously, while rewiring a fan gun and helping his oldest son with homework. With four young boys at home, it's conceivable that he has set the world record for the most viewings of "Cars" by any one individual.

phil@hkdsnowmakers.com

## Mistica Walker | Safehold Special Risk

A specialty claims adjuster, Mistica focuses on liability, property and auto claims, as well as monitoring workers' compensation. In addition, she provides loss control and risk management support to ski areas. Previously, Mistica worked for 11 years in ski operations, including risk management and legal. Mistica provides a wide range of ski area employee training and is a frequent speaker at workshops and seminars across the country. She also likes unicorns and deep house electronica music.

mistica.walker@safehold.com

## Tim Yates | Safehold Special Risk

Tim's career in the ski industry began in 1992 as a Stowe Mountain Resort ski patroller. Following 10 years at Stowe, he became a senior claims specialist in a ski industry insurance program, and then a resort risk manager at Northstar-at-Tahoe, California. For the last five years, Tim has been a self-employed claims and loss control consultant. In 2016, he joined the Safehold Special Risk team as a specialty claims adjuster.

timothy.yates@safehold.com



## TIMBERLINE CREW

### Logan Stewart, Mountain Ops Manager

After receiving a degree in Ski Area Management, Logan returned home to Mt. Hood and began working at Timberline. Logan is currently the mountain operations manager for the ski area, which includes oversight of Timberline's world-renowned summer operations and terrain parks. Logan's favorite flower is the rhododendron. He spends his free time in a Pitch Perfect reenactment group and plays with the Portland women's basketball league on Sundays. He can't wait to personally meet all of you.

### Steve Kruse, General Manager

Steve came to the ski industry after he lost his bid to get men's synchronized swimming recognized by the Olympic Committee. His aquatic background has served him well, as it developed his ability to hold his breath for a long time while smiling. You may find him demonstrating this skill throughout most of Cutter's Camp. Remove your hat when in his presence.

### Ricky Hower, Marketing Manager

The marketing manager every park crew wishes they had: Someone who has done it. Like Drake, Ricky started at the bottom, literally in the poo, cleaning toilets at Timberline. The one-time park digger then worked his way up to his current spot. Ricky has a deep knowledge of the ski industry, covering both ski resorts and the "industry side" as his time as Airblaster's Regular Guy. Ricky's dedication to our industry feeds his addiction to living a life of short shorts and sweet nectar powder boarding.



## Timberline's On-Hill Coaches

Caleb Hamilton, Danny Shupe,  
Jacob Reethes, Jesse MacDonald, & Tyler Wike

# CIRCLE OF TRUST





# BlackStrap

THE FINEST QUALITY // MADE IN THE USA ★

SUGARBUSH, VT



SNOWBOWL, AZ



PROUD SPONSOR OF

**CUTTER'S CAMP**

AND PARK CREWS ACROSS THE US.

MT BACHELOR, OR



COPPER MTN, CO



# CAMP SPONSORS



**1RISK**  
www.1risk.com  
Charles Mickley, Business  
Relationship Director



**ARENA SNOWPARKS**  
www.arenasnowparks.com  
Steve Petrie, Owner/President



**BLACKSTRAP**  
www.bsbrand.com  
Jim Sanco, Brand Manager



**BURTON SNOWBOARDS**  
www.burton.com  
Shaun Cattanach,  
Global Resort Director



**TOBE**  
www.tobeouterwear.com  
Greg Hughes, VP of Sales



**HKD SNOWMAKERS**  
www.hkdsnowmakers.com  
Phil Van Why, Western Sales & Tech  
Ben Siefert, Western Sales & Service



**LEICA GEOSYSTEMS**  
www.leica-geosystems.com  
Lukas Ingold, Leica Alpine  
Business Development Specialist  
Brian Moeller, Product Manager  
Andy Muhlegger, Data Expert  
Todd Hermsen, Leica Support  
Engineer



**PISTENBULLY**  
www.pistenbully.com  
Colin Hales, Regional Manager  
Megan McClelland, Marketing  
Alex Storjohann, PB Representative  
Jim Grewe, Intermountain Regional Manager  
Josh Lempert, PB Representative  
Chauncey Sorenson, Service Manager  
Matthew Wilcox, Service Rep



**PRINOTH**  
www.prinoth.com  
Charles Blier, VP of Sales N. America  
John Swartz, Regional Manager  
Jason Smith, Sales Rep  
Walter Piekarz, Sales Rep  
Mike Williams, Sales Rep  
Martin Antoniak, Service Rep  
Zach Collins, X Team Operator  
Philippe Gosselin, Marketing Manager  
Dave Simoneau, Product Manager  
Andreas Muigg, Product Manager



**Pabst Blue Ribbon**  
www.pabstblueribbon.com  
Steve Nilsen, Lifestyle Marketing  
Manager



**SNOW PARK TECHNOLOGIES**  
www.snowparktech.com  
Michael Bettera, Director of Ops  
Elliot Cone, Project Manager



**SAFEHOLD SPECIAL RISK**  
www.safehold.com  
Mistica Walker, Specialty Claims Adjuster  
Tim Yates, Specialty Claims Adjuster





A Wells Fargo Company

### ***Team up with us today.***

***Rob Andrews, Seattle, WA***  
206-470-3284  
[robert.e.andrews@safehold.com](mailto:robert.e.andrews@safehold.com)

***Bill Curtis, Lakewood, CO***  
720-963-6546  
[william.curtis@safehold.com](mailto:william.curtis@safehold.com)

***Ryan Patrick, Portsmouth, NH***  
603-559-1380  
[ryan.patrick@safehold.com](mailto:ryan.patrick@safehold.com)

## No resort is quite like yours

No insurance program delivers solutions quite like ours. We recognize that your business faces a unique set of risks every day. Our sports and recreation teams can help you assess and minimize those risks so you can focus on running your business.

We proactively consult with you to build the right insurance solutions — so you can feel confident that you have the right coverage in place to protect your business now and for the long term.

Products and services are offered through Safehold Special Risk, Inc., dba Safehold Special Risk & Insurance Services, Inc. in California, a non-bank insurance agency affiliate of Wells Fargo & Company. Coverage is provided by unaffiliated insurance companies.

© 2016 Safehold Special Risk, Inc. All rights reserved. WCS-2412638



# INTELLIGENT CONSTRUCTION DONE RIGHT

American construction is on the rise again. With the demand of construction efficiency at an all time high, the use of smart technologies have become the norm. Today's contractors are faced with more complexity than ever before, and typical technology out there doesn't seem to make it any easier. Leica Geosystems decided to do something about that, and the result is intelligent tools that feel natural, are easier to use, flexible enough to fit your way of working, and are ready out of the box. We are doing everything in our power to help you, the American worker, rise to the challenge once again.

Learn more at

[DoingItRightAtConExpo.com](http://DoingItRightAtConExpo.com)

# VIPER

A detailed black and white photograph of a HKD Viper snowblower. The machine is shown from a side-rear perspective, highlighting its robust metal frame, a large adjustable auger at the front, and a rear-mounted discharge chute. The auger is mounted on a heavy-duty shaft with multiple bolts. The entire unit is supported by a sturdy base with skid plates and a rear handle for maneuvering.

***STRIKE BACK!***

***8 CFM***

***5 FLOWS***

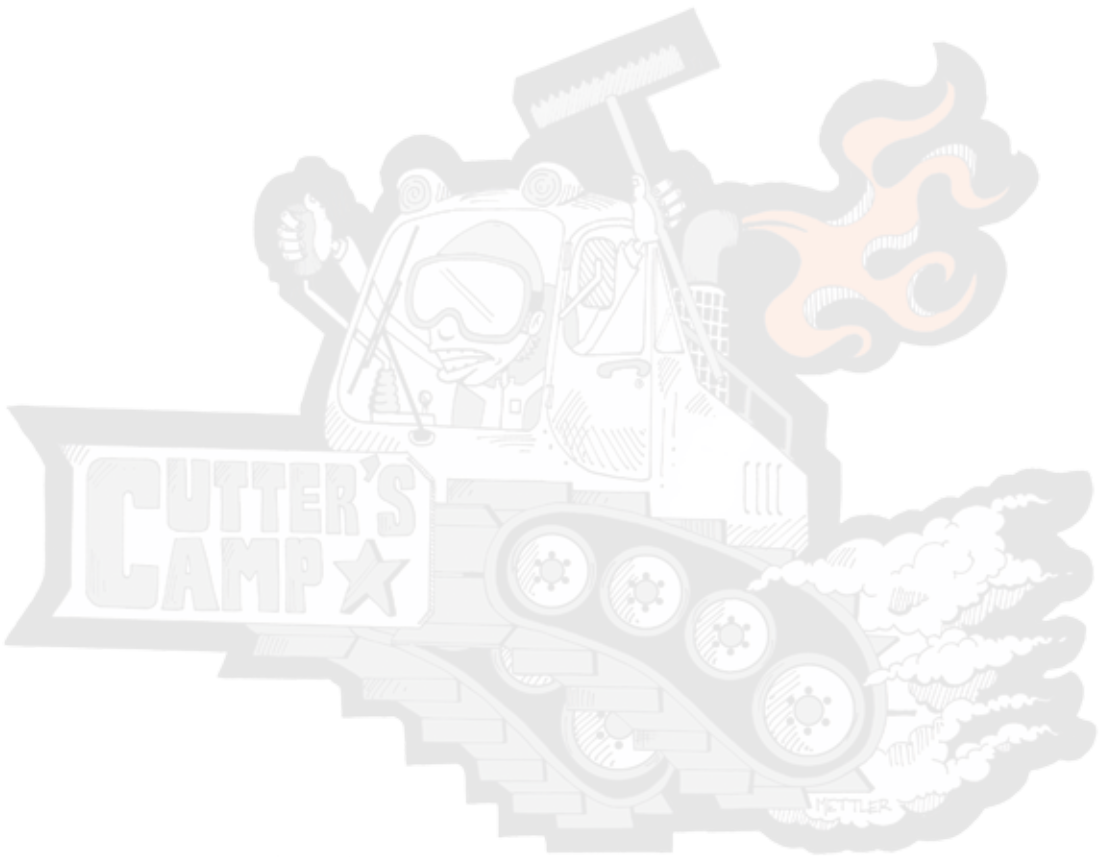
***SUPERIOR SNOW***

***HKDsnowmakers.com***

**HKD**   
SNOWMAKERS

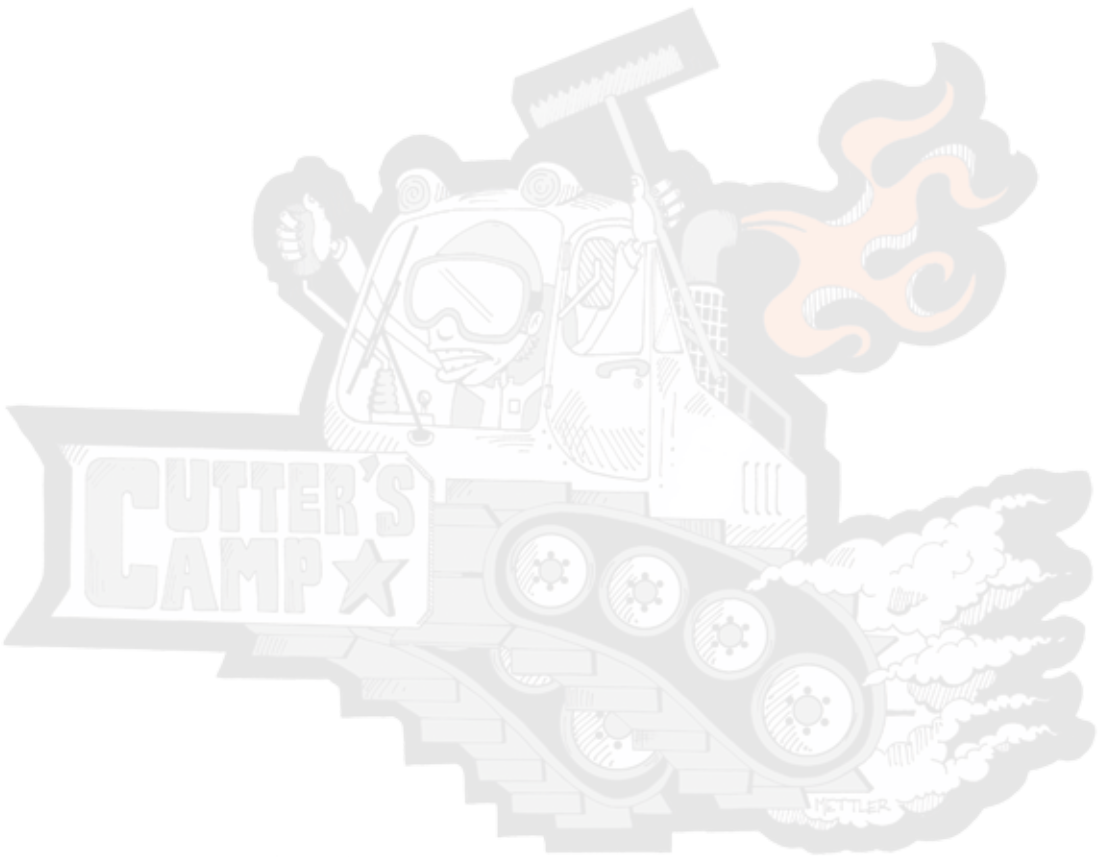


# NOTES






# NOTES





**ARENA  
SNOWPARKS**

[www.arenasnowparks.com](http://www.arenasnowparks.com)

 [@arena\\_snowparks](https://www.instagram.com/arena_snowparks)

**Revolutionizing parks since 1994**

**Park Construction • Rails and Boxes • Tools • 3D Design**



# SAM's 13th Annual Terrain Park Contest

We invite you to share your latest and greatest features and jibs, popular progression ideas, or awesome events with us. It can be your signature big air stuff, season-long events, or features that were so simple, yet so popular. It's all about taking chances and raising the bar, both in the Features category and the Events category. Please send a high-resolution photo plus a brief description to Liz Mettler at [liz@saminfo.com](mailto:liz@saminfo.com).

**2017 entries will run in SAM's upcoming November issue and on [www.saminfo.com](http://www.saminfo.com). Winners will receive a generous bag of loot from Burton Snowboards.**

BURTON EXPERIENCE  
SNOWBOARDING



PistenBully®

400 ParkPro

# One passion. One vision.

The best terrain parks are made when the best get together. Take creativity to new levels.



Photo: Tom Monterosso / Rider: Hans Mindnich

The added value of PistenBully is the worldwide network.

