

POWERED BY:

sam
SKI AREA MANAGEMENT



BURTON
LEARN TO RIDE

Leica
Geosystems

PistenBully

Pinotti

HKD
SNOWMAKERS

BIGAIRBAG COM

Safehold
SPECIAL RISK

bS *Black Strap*

CAPTUR
HEADWEAR



gogglesoc



BISON X THE ULTIMATE XPERIENCE



BISON X IS THE PERFECT FUSION OF PERFORMANCE AND POTENTIAL.

Driven by a relentless 400 HP (298 kW) Tier 4 final engine with **exceptional torque**, it combines **thrust & manoeuvrability** with **cab comfort** and **enhanced blade movement**. Every inch of this exceptional machine is engineered for park-building excellence. Therefore, the best park builders in the world rely on PRINOTH's BISON X. The Ultimate Xperience isn't just a slogan. It's a promise.

prinoth.com

Prinoth



SCHEDULE AT A GLANCE

MONDAY, MAY 14

10:00 a.m. - 4:00 p.m. Registration
10:00 a.m. - 3:00 p.m. Free Ski/Ride
12:00 p.m. - 4:00 p.m. Grooming Demos
5:00 p.m. - 6:00 p.m. Prinoth Fireside Chat
6:00 p.m. - 11:00 p.m. Dinner and Burton Welcome Party

TUESDAY, MAY 15

7:30 a.m. - 8:30 a.m. Breakfast
8:00 a.m. - 12:00 p.m. Block 1: On-hill Building
8:30 a.m. - 9:30 a.m. The Jib Factory
9:30 a.m. - 11:15 a.m. Groomer Technology
10:15 a.m. - 10:30 a.m. Morning Break
11:15 a.m. - 12:15 p.m. Risk Management: State of the Industry
12:15 p.m. - 1:15 p.m. BigAirBag Lunch
1:00 p.m. - 4:45 p.m. Block 2: On-hill Building
1:30 p.m. - 2:30 p.m. Parks on Trial: Mock Depositions
2:30 p.m. - 2:45 p.m. Afternoon Break
2:45 p.m. - 3:45 p.m. ROI of Terrain Parks
5:15 p.m. - 9:00 p.m. Prinoth Dinner & Annual Trip to Windells

WEDNESDAY, MAY 16

7:30 a.m. - 8:30 a.m. Breakfast
8:00 a.m. - 12:00 p.m. Block 3: On-hill Building
8:30 a.m. - 9:30 a.m. Step Down/Hip Measurement
9:30 a.m. - 10:15 a.m. Park Challenge Park 1
10:15 a.m. - 10:30 a.m. Morning Break
10:30 a.m. - 11:15 a.m. Park Challenge Part 2
11:15 a.m. - 12:00 p.m. Progression Parks
12:00 p.m. - 1:00 p.m. PistenBully Lunch
12:45 p.m. - 4:45 p.m. Block 4: On-hill Building
1:00 p.m. - 2:30 p.m. Roundtable PODs
2:45 p.m. - 3:30 p.m. Afternoon Break
3:30 p.m. - 5:00 p.m. Manager's Roundtable
6:00 p.m. - 11:00 p.m. PistenBully Dinner & Annual Game of Sleds & Sumos

THURSDAY, MAY 17

7:30 a.m. - 8:30 a.m. Breakfast
8:00 a.m. - 12:00 p.m. Block 5: On-hill Building
8:30 a.m. - 10:00 a.m. Terrain Park Checklists
10:00 a.m. - 10:30 a.m. Morning Break
10:30 a.m. - 12:00 p.m. Roundtable PODs
12:00 p.m. - 1:00 p.m. HKD Snowmakers Lunch
12:45 p.m. - 4:45 p.m. Block 6: On-hill Building
1:00 p.m. - 3:00 p.m. Timberline Park Tours
4:00 p.m. - 6:00 p.m. Nap Time
6:00 p.m. - 11:00 p.m. Leica Geosystems Final Night Awards Dinner and Slideshow

FRIDAY, MAY 18

7:00 a.m. - 9:00 a.m. Final Breakfast
9:00 a.m. - 3:00 p.m. Free Ski/Ride

ATTENDEES



ARAPAHOE BASIN, CO

Austin Fellenz, Terrain Park Ranger
Paul Markow, Terrain Park Supervisor

BEAVER MOUNTAIN, UT

Jake Roghaar, Terrain Park Manager
Cameron Madsen, Park Groomer

BIG SKY, MT

Adam West, Terrain Park Manager
Zach Johnson, Terrain Park Supervisor

BIG WHITE SKI RESORT, AB

Zack Dayman, Terrain Park Groomer

BOGUS BASIN, ID

Corey McDonald, Terrain Park Director
Cody Johnston, Park Crew

BOREAL, CA

Joey Lippien, Groomer/Builder
Matthew Ybarra, Grooming &
Parks Manager
Matthew Baird, Director of Mountain Ops

BOYNE HIGHLANDS, MI

Trey Schorffhaar, Terrain Park Supervisor

CYPRESS MOUNTAIN, BC

Mac Whillans, Terrain Park Manager

DEVIL'S HEAD, WI

Alex Stoick, Terrain Park Manager

DISCOVERY SKI AREA, MT

Ben Hoppe, Terrain Park
Byron Bloemeke, Terrain Park &
Lift Maintenance
Chase McChesney, Terrain Park and
Grooming

FALLS CREEK, BC

Michael Kurts, Terrain Park Supervisor

GRAND TARGHEE, ID

Erik Clark, Terrain Park Supervisor/
Groomer

GRANITE PEAK, WI

Jacob Halverson

GREAT DIVIDE, MT

CJ Spinola, Assistant Manager

GROUSE MOUNTAIN, BC

Marcus Cartwright, Terrain Park Manager
Hamish Taitoko, Grooming Supervisor

KINOSOO RIDGE, AB

Cody Warman, Operations Groomer
Sean Somcher

LAKE LOUISE, AB

Devan Mathers, Terrain Park Grooming
Foreman
Andrew Paszt, Terrain Park Groomer

LITTLE SKI HILL, ID

Colby Nielsen, General Manager
Preston Woods, Terrain Park Manager

LITTLE SWITZERLAND, WI

Ryan Ruffing, Marketing Coordinator/
Operations

LOON MOUNTAIN, NH

Chad Lohmiller, Terrain Park Manager

MOUNT ST. LOUIS MOONSTONE, ON

Decker Beard, Groomer
Chris Connell, Groomer
Craig Burley, Park Manager



ATTENDEES

MOUNT SNOW, VT

Rob Black, Assistant Terrain Park Manager

MOUNTAIN CREEK, NJ

Kristopher O'Rourke, Operator

MT. HUTT SKI FIELD, N.Z.

Andre Genest, Snowcat Operator

MT. SPOKANE, WA

Zachary Lingo, Terrain Park Manager

MT. HOOD MEADOWS, OR

Brian Ross, Day Crew Lead

OBER GATLINBURG, TN

Trevor Needham, Terrain Park Manager

OKEMO, VT

Mark Fiori, Parks and Pipes Manager

SILVERSTAR, BC

Daton Keir, Terrain Park Supervisor

Paul Kenward, Events/Terrain Park Manager

SNOW KING, WY

Brandon Wood, Grooming Manager

AJ Smith, Groomer

SMUGGLERS' NOTCH, VT

Arlo Pouliot, Grooming Manager

SNOW VALLEY, CA

James Renick, Snow Surfaces Manager

David Olivieri, Snowmaking Supervisor

Charley Traweek, Snow Surfaces Supervisor

SNOWBASIN, UT

Mike McCain, Terrain park Groomer/Builder

SNOWBIRD, UT

Evan Cole, Terrain Park Supervisor

Jason Fuller, Terrain Park Groomer

SNOWSHOE, WV

Evan Cole, Terrain Park Supervisor

Jason Fuller, Terrain Park Groomer

STEAMBOAT, CO

Charlton Greenberg, Shaper/Operator

Alec Parker, Lead Builder

STEVENS PASS, WA

Brad Hendrickson, Lead Builder

Dennis McCracken, Grooming Supervisor

SUMMIT AT SNOQUALMIE, WA

Joe Pope, Park Director

Jeff Cragin, Park Day Crew Manager

Josh Rogers, Park Grooming Manager

SUNLIGHT MOUNTAIN RESORT, CO

Colin Scholz, Terrain Park Supervisor

THREE RIVERS PARK DISTRICT, MN

Andy Peterson, Park Keeper

Travis Peterson, Park Technician

TROLLHAUGEN, WI

Adam Mahler, Asst. Mtn. Manager

WATERVILLE VALLEY / WATERVILLE VALLEY ACADEMY, NH

Dan Shuffleton, Operator

Chase Shaw, Snow Surfaces Manager

Taylor Stout, Terrain Park Manager

WHITEFISH, MT

Tyler Stanley, Terrain Park Supervisor

Kenneth Reece, Terrain Park Supervisor

WOODWARD AT ELDORA, CO

Andrew Roy, Operator & Fabricator

YOUNG MOUNTAIN, AUSTRIA

Karl Sanderson, Park Builder / Operator



L: Northstar Resort

BURTON RIGLET SNOWBOARDING

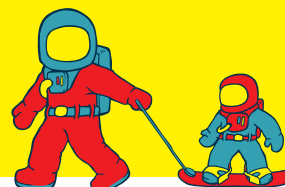


**RESEARCH SHOWS THAT
THE YOUNGER THEY START,
THE GREATER THEIR
LIFETIME SPEND**

With a full line of kids' snowboard gear and teaching tools designed to make the learning process easier, Burton Riglet Snowboarding helps get the youngest of kids started.

LEARN MORE

contact resortinfo@burton.com



FOLLOW US



@BURTONRIGLET

OR TAG US WITH #BURTONRIGLET
BURTONRIGLET.COM



P: Greg Cornilio, L: Lake Louise Resort

MONDAY, MAY 14



CAMP AGENDA

10:00 a.m. - 4:00 p.m.	Barlow Room	Attendee Registration
12:00 p.m. - 4:00 p.m.	Outside of Ullman Hall	Grooming Demos Reps from PistenBully, Prinoth, SNOWsat, and Leica will be on hand to provide demos and answer questions about their latest grooming machines and snow depth technology.
10:00 a.m. - 3:00 p.m.	On-Hill	Free Ski and Ride Campers are welcome to ski and ride Timberline and check out the Timberline parks. Your badge will serve as your lift ticket and get you rental gear.
5:00 p.m. - 6:00 p.m.	Raven's Nest <i>Krush Kulesza Snowboy Productions; Landon Taylor, SPT; Nick Roma, White Industries; Elia Hamilton, Peak Resorts</i>	Prinoth Fireside Chat Our panelists have worked on some of the biggest events in the world, from the Olympics to the Dew Tour to X Games and Holy Bowly. Hear about the behind-the-scenes from these events, including lessons learned; most challenging build; design process for signature events; determining spacing and flow for competitors, and much more. You don't want to miss this one! 
6:00 p.m. - 11:00 p.m.	Barlow Room and Blue Ox Bar	Dinner and Burton Welcome Party Good cheer and cold beer. 

THE MISSION OF CUTTER'S CAMP IS TO FOSTER DISCUSSION WITH OTHERS IN YOUR FIELD, SHARE LEADING PRACTICES, AND BE INSPIRED TO RUN SUCCESSFUL TERRAIN PARKS.

sam
SKI AREA MANAGEMENT





CAMP AGENDA

TUESDAY, MAY 15

7:30 a.m. - 8:30 a.m.	Cascade Dining Room	Breakfast
8:00 a.m. - 12:00 p.m.	Ullman Hall Patio	ON-HILL BUILDING: BLOCK 1 Campers who are signed up for Block 1, please meet your coach outside Ullman Hall on the patio promptly at 8:00 a.m. You will discuss your on-hill goals for a few minutes before heading out on-hill.
8:30 a.m. - 9:30 a.m.	Ullman Hall <i>Mike Bettera, Effective Edge; Brian Norton, Boyne Resorts; Jesse MacDonald, Timberline</i>	The Jib Factory Ledges, rails, boxes--the history of jibs in terrain parks runs deep. Heavily influenced by street skating, snowboarding took the sport's lead and started experimenting with jibs on snow. Rails, boxes, wall rides, and organic elements--made out of everything from wood to metal--have pushed jib features to new heights. What are today's current trends? What are customers demanding? And what's the best material for your climate and maintenance concerns? A panel of experts led by Mike Bettera of Effective Edge will dive into these questions, along with current industry data and best practices.
9:30 a.m. - 11:15 a.m.	Ullman Hall <i>Nick Roma, White Industries; Floreain Eder, Prinoth; Caroline Tyra, Leica; Josh Nelson, PistenBully/SNOWsat</i>	Groomer Technology Advances in technology are changing the way terrain parks are designed, built, groomed, and managed. It gives operators and managers more accuracy, accountability, and efficiency. In the classroom and in demos on-hill, we will take a closer look at all the technologies and tools available.
10:15 a.m. - 10:30 a.m.	Morning Break	Morning Break
11:15 a.m. - 12:15 p.m.	Ullman Hall <i>Tim Yates, Safehold Special Risk; Mary Bozack, MountainGuard; Tom Scully, Safehold Special Risk; Ruth Nielson, Keating, Bucklin & McCormack; Richard Jolley, Keating, Bucklin & McCormack</i>	Risk Management: State of the Industry In preparation for the upcoming mock deposition session, Insurance representatives of Safehold Special Risk and MountainGuard, ASDA attorneys and risk management specialists will discuss the five most common theories of liability brought against resorts in terrain park cases: negligent design, negligent construction, negligent maintenance, failure to warn, and failure to educate. Campers are invited to bring ideas and examples of resources used at their resorts to mitigate these theories.
12:15 p.m. - 1:15 p.m.	Wy'East Day Lodge	Lunch BIGAIRBAG <small>COM</small> 
1:00 p.m. - 4:45 p.m.	Ullman Hall Patio	ON-HILL BUILDING: BLOCK 2 Campers who are signed up for Block 2, please meet your coach outside Ullman Hall on the patio promptly at 1:00. You will discuss your on-hill goals for a few minutes before heading out.

TUESDAY, MAY 15

1:30 p.m. - 2:30 p.m.

Ullman Hall

Tim Yates, Safehold Special Risk; Mary Bozack, MountainGuard; Tom Scully, Safehold Special Risk; Ruth Nielson, Keating, Bucklin & McCormack; Richard Jolley, Keating, Bucklin & McCormack

Parks on Trial: Mock Depositions

Insurance representatives of Safehold Special Risk and MountainGuard, ASDA attorneys and risk management specialists will lead five mock depositions using members of the audience focusing on the five key elements that play vital roles in many terrain park cases: negligent design, negligent construction, negligent maintenance, failure to warn, and failure to educate. Presented in a dynamic format, this session is sure to be an eye-opener for campers.

2:30 p.m. - 2:45 p.m.

Afternoon Break

Afternoon Break

2:45 p.m. - 3:45 p.m.

Ullman Hall

Mike Bettera, Effective Edge; Elia Hamilton, Peak Resorts; Logan Stewart, Timberline; Jay Scambio, Loon Mountain

How to Measure Your Terrain Park's Financial Success-- And Why You Should

Throughout the years, terrain parks have evolved from a testing ground to a well-managed department with consistent practices. Metrics and cost tracking related to all resort departments, including terrain parks, have become easier to measure. Thus the expectations resort operators hold Terrain Park Managers accountable for have increased as well. What variables do your resorts track, what areas should you be tracking, and where is there future opportunities? Our panel of expert resort personnel will dive into why they track, and how they are defining success and evaluating the ROI of their parks.

5:15 p.m. - 9:00 p.m.

Windells

BUSES LEAVE PROMPTLY AT 5:15PM FROM IN FRONT OF THE LODGE.

Prinoth Dinner and Fun at Windells

We head to Windells, the "Funnest" place on earth, where your options are to skateboard, trampoline, BMX, and participate in the annual Prinoth Dodgeball Tournament... If you can dodge a snow-cat, you can dodge a ball!

Prinoth

WEDNESDAY, MAY 16

7:30 a.m. - 8:30 a.m.

Cascade Dining Room

Breakfast

8:00 a.m. - 12:00 p.m.

Ullman Hall Patio

ON-HILL BUILDING: BLOCK 3

Campers who are signed up for Block 3, please meet your coach outside Ullman Hall on the patio promptly at 8:00 a.m. You will discuss your on-hill goals for a few minutes before heading out.

CAMP AGENDA



WEDNESDAY, MAY 16

8:30 a.m. - 9:30 a.m.	<p>Ullman Hall</p> <p><i>Elia Hamilton, Peak Resorts; Jay Scambio, Loon Mountain; Mike Bettera, Effective Edge</i></p>	<p>Jump & Hip Measurement Procedures</p> <p>Ever pin the tail on a donkey? What about a terrain park feature? Our park experts will lead the group through measuring two life-size terrain park features--a step down and a hip. Attendees will participate in this hands-on workshop to discuss best practices and tools used for jump measurement best practices.</p>
9:30 a.m. - 10:15 a.m.	<p>Ullman Hall</p> <p><i>Elia Hamilton, Peak Resorts; Ken Gaitor, Snowshoe; Jay Scambio, Loon Mountain; Mike Bettera, Effective Edge</i></p>	<p>Park Challenge Part I</p> <p>Campers will be divided into four teams to complete a specified park challenge. Coaches will provide an overview of the challenge, and teams will work to create a solution.</p> <p>The challenge will present curve balls that the teams must work through. Team members will work together to address a list of objectives. During part one, teams will brainstorm creative solutions, which they will then present to the group in Part II.</p>
10:15 a.m. - 10:30 a.m.	Morning Break	Morning Break
10:30 a.m. - 11:15 p.m.	Ullman Hall	<p>Park Challenge Part II: Presentations & Group Discussions</p> <p>Each of the four teams will present its solutions/recommendations to the group, followed by a Q&A with the coaches.</p>
11:15 a.m. - 12:00 p.m.	<p>Ullman Hall</p> <p><i>Chris Hargrave, Hargrave Coaching Innovations</i></p>	<p>The Progression of Progression Parks</p> <p>This session will cover some of the most important design considerations when planning progression features and parks. We will look carefully at how the look and feel of terrain parks can cause users to reach for their goals or retreat all together. Come prepared to try something new in this session, review some of the more progressive "progression park" features, and contribute your own ideas.</p>
12:00 p.m. - 1:00 p.m.	Raven's Nest	<p>PistenBully Lunch</p> 
12:45 p.m. - 4:45 p.m.	Ullman Hall Patio	<p>ON-HILL BUILDING: BLOCK 4</p> <p>Campers who are signed up for Block 4, please meet your coach outside Ullman Hall on the patio promptly at 12:45. You will discuss your on-hill goals for a few minutes before heading out.</p>
1:00 p.m. - 2:30 p.m.	Ullman Hall	<p>Breakout PODS</p> <p>The topics on the facing pages will be arranged in small breakout pods led by industry leaders. Campers choose topics of interest and get answers to their burning questions. Lightning round setup ensures that campers get a chance to hit four of the pod discussions.</p>

WEDNESDAY, MAY 16

BREAKOUT PODS

EVENTS & PARTNERSHIPS

Whether it's a small, local contest or a full-scale competition, planning and preparation are key to success. Marketing and event specialists will share ideas on how to facilitate events of all sizes.

DOCUMENTATION/LOGS

Best practices in documentation during daily operations. Compare levels of techniques, tools, and innovations for park documentation.

GROOMER TECHNOLOGY/SNOW DEPTH MANAGEMENT

Advances in technology are changing the way terrain parks are built, groomed, and managed. These advances give operators and managers more accuracy, accountability, and efficiency. Take a close look at the technologies and tools available.

FEATURE DESIGN & CONSTRUCTION

Take-offs and landings. Spacing and flow. Pipes and walls. Working the snow for consistency and longevity. How to begin (the set-up) and how to finish your feature.

PROGRESSION

Building a clear progression plan--including feature design and flow that creates a fun, stress-free experience so guests come back--is a key element to a successful park program.



CAMP AGENDA

2:45 p.m. - 3:30 p.m.	Afternoon Break	Afternoon Break
3:30 p.m. - 5:00 p.m.	Raven's Nest <i>Ken Gaitor, Snowshoe</i>	Terrain Park Manager's Roundtable Come prepared to share with the group in this facilitated, but informal, discussion for park managers. This year's discussion will focus on staffing and team management.
6:00 p.m. - 11:00 p.m.	Wy'East Day Lodge	PistenBully Dinner Do you have what it takes to compete in the PB Games? Can you hang with PB in agility and reflexes? And what about your gambling skills? Show us what you got! 

THURSDAY, MAY 17

7:30 a.m. - 8:30 a.m.	Cascade Dining Room	Breakfast
8:00 a.m. - 12:00 p.m.	Ullman Hall Patio	ON-HILL BUILDING: BLOCK 5 Campers who are signed up for Block 5, please meet your coach outside Ullman Hall on the patio promptly at 8:00 a.m. You will discuss your on-hill goals for a few minutes before heading out.
8:30 a.m. - 10:00 a.m.	Ullman Hall <i>Elia Hamilton, Peak Resorts; Ken Gaitor, Snowshoe; Jay Scambio, Loon Mountain; Benny McGinnis, Mount Snow; Jesse MacDonald, Timberline</i>	Terrain Park Pre- and Post-Season Game Plan Do you make checklists for pre- and post-season planning and maintenance? Campers will experience a deep-dive into pre-season preparation for park design, opening procedures, staffing, maintenance and events. This real-life scenario will take campers through in-depth post-season and pre-season planning and work together to develop strategic checklists to help run a safe and successful terrain park.

THURSDAY, MAY 17

10:00 a.m. - 10:15 a.m.	Morning Break	Morning Break
10:30 a.m. - 12:00 p.m.	Ullman Hall	Breakout PODS The topics below will be arranged in small breakout pods led by industry leaders. Campers choose topics of interest and get answers to their burning questions.
BREAKOUT PODS	JIBS & RAILS Rails, jibs, boxes, and everything in between. Do you fabricate in-house or contract out? Preferred materials list and year-round maintenance checklist. Transporting, setting, ramping, and placement.	PLANNING AND COMMUNICATION Writing a business plan for your park, designing and balancing a budget, and how to effectively communicate your needs to upper management.
	VEHICLE MAINTENANCE What are the most important things to know to get the most from your machines? What are the stresses and forces to avoid? What is recommended for a daily walk-around routine for park operators? Or, ask your own questions of the experts on hand.	SAFETY AND RISK MANAGEMENT Signage, Freestyle Terrain Notebook, guest education, accident investigation, testing protocols, logs—bring your burning questions to experts or hear from your colleagues.
		SNOW SCIENCE AND SNOWMAKING IN THE PARK Terrain parks use the most snowmaking on the mountain. Learn how to plan and communicate your needs and maximize what you've got.
12:00 p.m. - 1:00 p.m.	Ullman Hall Patio	HKD Lunch 
12:45 p.m. - 4:45 p.m.	On Hill	ON-HILL BUILDING: BLOCK 6 Campers who are signed up for Block 6, please meet your coach outside Ullman Hall promptly at 12:45. You will discuss your on-hill goals for a few minutes before heading out.
1:00 p.m. - 3:00 p.m.	On Hill	Park Tours Take a tour of Timberline's parks with the park crew. If available, campers will also be able to check out the course from last week's Holy Bowly event.
3:00 p.m. - 6:00 p.m.		Nap Time
6:00 p.m. - 11:00 p.m.	Ullman Hall	Leica Geosystems Final Night Dinner Leica will treat us to a feast as we reflect on the week. We present our camp awards and the annual Cutter's Camp Education Grant presented by Safehold Special Risk. 

FRIDAY, MAY 18

7:30 a.m. - 9:00 a.m.	Cascade Dining Room	Breakfast
9:00 a.m. - 3:00 p.m.	On-Hill	Free Ski/Ride

Black Strap

THE FINEST QUALITY // MADE IN THE USA // EST 2008. ★

BLACKSTRAP PROUDLY SUPPORTS PARK CREWS AROUND THE WORLD.

24 NORTH AMERICAN PARK CREWS IN 2017/18

PARTNERING WITH **PARK CREWS** TO PROVIDE
QUALITY, USA MADE, BRANDED FACEGEAR.

CUSTOM **PARKS** BRANDED LOGO WEAR.

SPONSORING GRASS ROOTS,
PARK SPECIFIC EVENTS.

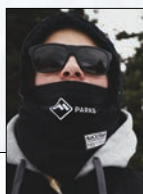
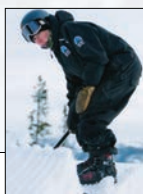
SUPPORTING **SAFE PROGRESSION** IN SNOWSPORTS.

COLLABORATING TO PRODUCE
VISUAL & UNIQUE **SOCIAL MEDIA** CONTENT.

#BLACKSTRAPPARKSPROJECT



A HUGE THANKS TO OUR 17//18 PARK CREWS!
FIND US AT CUTTER'S CAMP REGISTRATION TO LEARN MORE.



Michael L. Bettera | Effective Edge

Michael has worked closely with resort partners to keep them current with regard to industry trends, as well as through the creation of new, innovative projects and terrain park risk management, for the past two decades. His specialty is signature resort projects and programs, including the Squaw Valley Peace Park, The Streets at Seven Springs, Global Burton Stash parks, and Burton Progression Parks. He has worked with more than 50 resorts around the globe, is a former head coach at Waterville Valley, NH, and has served as a judge at events including the Burton U.S. Open. His career in the resort industry started in 1988 as one of the first snowboard instructors and members of AASI. mike@effectiveedge.com

Mary Bozack | MountainGuard

Mary Bozack joined the claims department at MountainGuard in September 1998. She was promoted to vice president of claims in July 2002. Mary conducts investigations of losses, handles claims and directs litigation, conducts loss control surveys of ski resorts (winter and summer activities), and provides loss control training for our insureds and the ski industry. She has been an instructor/presenter for ski areas and regional and national associations, covering an assortment of industry related topics. Prior to joining MountainGuard she was the Patrol Director/Risk Manager with Stowe Mountain Resort, Stowe, Vermont. mary.bozack@amwins.com

Florian Eder | Prinoth

Florian started his grooming career 15 years ago and pretty much grew up on winch cats. He started at his hometown hill, Jenner, in Bavaria, Germany. Over the last 15 seasons he's worked in Germany, Austria, Italy, Switzerland, Norway, Russia, and Canada. His first position with park building was during the '07-'08 season while working at Whistler/Blackcomb. He's been part-time for Prinoth since 2013 and started full time in 2017. He is now responsible for the training program and Prinoth-supported events. Florian has been part of many large event builds over the past 10 years, including the 2010 Winter Olympics in Vancouver, 2013 test events in Sochi, World Cup ski/snowboardcross builds, Big Air Ski and Snowboard Festival in Whistler, and many other Europa Cup-level race events. Florian.Eder@prinoth.com

Ken Gaitor | Snowshoe

Ken grew up playing on the mountains of West Virginia and started skating everything he could in 1985. He moved to the Northeast for college and began building small parks wherever possible. In '97, he moved West and became Brighton's park manager, working there for six years. In '03 he moved back East, working as Mount Snow's freestyle terrain manager until 2009. In 2010, Ken returned to wild and wonderful West Virginia to become Snowshoe's director of operations. In this role he oversees the building of its five terrain parks, as well as snowmaking, grooming, lifts, vehicle, and patrol departments. Ken's beard is the only hair on his head, besides his eyebrows, that can grow--the result of a real but unfortunate medical condition. It's taken him many years and careful grooming to grow it to its current length. He's embarrassed by all this, so please don't ask him about it. Elia strokes it for good luck each morning, but that's their secret. kgaitor@snowshoemountain.com

Elia Hamilton | Peak Resorts

Elia began building jumps for his Tonka trucks as early as he can remember. He was eventually kicked off the school ski team in '92 for skipping practice to build jumps, and started building professionally at Mount Snow in 1998. Elia became the director of freestyle terrain for American Skiing Company in 2003, and in 2005 became the mountain manager at Mount Snow. Elia was appointed director of freestyle terrain for Peak Resorts in 2011, and is now VP of terrain development. He's doing his part to change the way people experience snow resorts. In his spare time Elia volunteers as the director of the board for the Vermont Royal Pigeon Racing Association. His racing pigeon, Eeyore, is the reigning Northeast champion five years running. He's training his flock of racers and is desperately looking to hire an assistant to help groom his next champion. Email resumes to ehamilton@peakresorts.com.

Chris Hargrave | Hargrave Coaching Innovations

Chris is a 25-year industry veteran and is best known for his passion for teaching people. He has worked in various roles in ski school leadership, park design, and management, progressing to developing specialty programs like the summer freestyle camps and parks at Mt. Hood, Woodward training facilities, the Burton Snowboard Academy, and Terrain Based Learning with SNOW Operating. He coaches Olympic-level athletes and travels the country training instructors and terrain builders to develop learning terrain and park programs. He has been an instructor and examiner with PSIA and AASI, has helped author freestyle manuals for PSIA, and has worked on NSAA task forces to help develop safety education for terrain parks. Most recently he was president of the Windells Academy and VP of operations at High Cascade and Windells camps. He has transitioned into his own consulting business and is developing specialized parks and programming in China and throughout the US. ctrides@msn.com



PANELISTS & COACHES

Todd Hermesen | Leica Geosystems

Todd Hermesen is the U.S. technical lead for Leica Geosystems Machine Control Division. Todd has been employed in the industry for eleven years. For the last eight years, he has worked with machine guidance systems for Leica. Todd is dedicated to partnering with clients to maximize productivity by implementing cutting-edge positioning technologies.
todd.hermesen@leicaus.com

Krush Kulesza | Snowboy Productions

Krush is the owner and founder of Snowboy Productions, an event production company that handles concept creation, site design and builds, media relations, and athlete activation for a variety of unique events, including the one-of-a-kind Holy Bowly. Kulesza worked in the mountain resort industry for more than 10 years before running Snowboy exclusively. He served as youth marketing manager at The Summit at Snoqualmie from 2001 to 2010 and as global events manager at Mervin Mfg from 2011 to 2015. Snowboy Productions is the creator of dozens of events, including Downtown Throwdown, The Loon, Troll and Bogus Projects, BARREly an Event, Butter Ball at Boreal, and more. krush@snowboyproductions.us

Stephen Lawlor | Mountainguard

Stephen Lawlor joined the MountainGuard team in May 2010. His responsibilities include resolving liability- and property-related claims and providing loss control services for the ski resorts he serves. He works primarily with ski areas in the western and midwestern United States and western Canada. Prior to joining the MountainGuard team, Stephen worked at American International Group for 10 years performing various underwriting, loss control, and claims management activities. In addition, Stephen managed the environmental compliance program at Stowe Mountain Resort, an AIG-owned company.
Stephen.Lawlor@amwins.com

Benny McGinnis | Mount Snow

Benny was born and raised in Asheville, N.C. He loved the sunshine so much that he moved to Lake Tahoe in 2002, where he began working at Sierra-at-Tahoe. He's been operating snowcats for 16 years; most of his time has been spent in terrain park design and construction. He was the terrain park department manager at Sierra-at-Tahoe for three years before moving back east to Mount Snow, where he is currently the freestyle terrain manager for Carinthia parks. BMcGinnis@mountsnow.com

Josh Nelson | PistenBully

Josh Nelson has worked for Kässbohrer All-Terrain Vehicles Inc. (PistenBully) for 15 years in multiple roles and territories. Currently the SNOWsat manager for North America based out of Reno, Nev., Josh has experience working with customers large and small to install, implement, and support the SNOWsat system. He believes the employment of new technologies is key to the growth, sustainability, and success for the ski industry.
JNelson@pistenbullyusa.com

Ruth Nielsen | Keating, Bucklin & McCormack

For the past 25 years, Ruth has worked as an attorney specializing in defending ski areas and other outdoor recreation businesses, including manufacturers of skis and snowboards. She is the past president of the Association of Ski Area Defense Attorneys, and is a frequent speaker on liability issues at national and local ski area association meetings. Ruth is an avid backcountry skier and snowboarder and has enjoyed some of the best secret powder stashes in the Northwest. She loves dogs and tattoos. No really, ask to see her dog tattoo. rnielsen@kbmlawyers.com

Brian Norton | Loon, N.H.

Brian started working at Loon in 2001. He began as a part-time liftie, and within his first season transitioned into a role within the terrain park. He became park manager in 2006. In addition to the day-to-day operations of manager, Brian and his team have also taken part in several major photo and video shoots, including five trips to *Snowboarder* Magazine's Superpark. Currently, Brian is the director of mountain sports development for Boyne Resorts, where he looks after the terrain parks and mountain biking along with being involved in snowsports and winter operations at all nine of the company's resorts. Bnorton@boyneresorts.com

The SAM Magazine Staff: Olivia Rowan, Liz Mettler & Sarah Borodaeff

Olivia is the publisher/owner of *SAM*, Liz is associate editor, and Sarah is marketing manager and research editor. All three grew up on the East Coast, skiing since they could fit in backpacks. Liz is best served with a Tom Collins and a side of sarcasm. Sarah is best served a Bear Fight with a side of dog talk. Olivia is best not served. All three love planning Cutter's Camp and look forward to meeting all of you. olivia@saminfo.com / liz@saminfo.com / sarah@saminfo.com



Nick Roma | White Industries

Starting skiing at the age of 22 months with his parents, Nick has spent his entire life on snow, and quickly learned that life on any mountain brings him true happiness. He started his career at Sunday River in 2002 where he honed his skills by building events such as the Heat Harvest, the Down Town Showdown, and Dumont Cup. In 2005 he became the terrain park manager and in 2009 moved west to become the terrain park manager at Steamboat Resort, Colo., for three seasons. Nick is currently the director of operations, project lead and head builder for White Industries. Since 2012 Nick has been dedicated to the Ski and Snowboard Cross World Cup Tour where he has been designing, building and participating in more than 40 different international venues. He's a three-time Olympic builder, two-time World Championships builder, and has built 30 World Cup venues. info@whiteindustriesltd.com

Jay Scambio | Loon Mountain

Jay has been working in the ski industry for nearly 20 years, starting as a snowboard instructor at Loon Mountain Resort, N.H., then moving on to other operations at the resort, primarily focused on managing its world-class terrain park program. He most recently oversaw all terrain parks, snow sports, and adventure sport operations as the director of mountain sport development for Boyne Resorts before taking the reigns at Loon Mountain as president and general manager. In addition to his role within Boyne Resorts, he is an active member in NSAA, working closely with several committees and focus groups to improve terrain park, snow sports, and mountain bike operations at resorts nationwide. Jay is still getting used to his new role as general manager and so is on the hunt for the perfect pair of khakis. He's not really a khaki guy, so if you have any suggestions he will welcome your ideas. jscambio@loonmtn.com

Landon Taylor | Snow Park Technologies

For the past 20 years, Landon has been behind the scenes building and shaping some of the most innovative terrain parks and action sports event courses in the world. Landon has been part of the SPT crew since 2009, managing all aspects of specific projects: scheduling, training, running crews, planning, communication and coordination with internal and external partners, and heavy equipment operating. His extensive design and build experience includes snowmaking, hand shaping, terrain park snowcat operator, and superpipe cutter for resorts including Snow Summit, Bear Mountain, Park City, and Northstar. During his career, Landon has also been involved with projects such as X Games Aspen, X Games Europe, Summer X Games, Winter and Summer Dew Tour, Nitro World Games, Peace Park, and many others. landon@snowparktech.com

Tom Scully | Safehold Special Risk

Tom Scully is a loss control consultant with Safehold Special Risk. In this role he assists ski areas with winter and summer operational risk evaluations and lift inspections. Tom has nearly 35 years of ski industry experience in a wide variety of mountain operations roles, most recently as director of mountain operations at a large northwest ski resort. Tom is active throughout the industry, serving as a conference speaker at a variety of industry schools and as a voting member of many industry committees, including ASC B77 (ANSI), ASTM F24 and F27. In his personal time, Tom enjoys using all type of bikes, skis, and climbing equipment with his family. tom.scully@safehold.com

Caroline Tyra | Leica

Caroline started her sales career as a manufacturer's representative for Raichle Molitor, managing accounts for Fischer and Volant Skis and various lines of soft goods. Her interest in mapping technologies then led her into the geospatial industry, where she has been globally selling survey and aerial imagery services for the last 20 years. Now, as the North American sales manager for Leica Geosystems Machine Control Division, she is happy to combine her interests and experience in promoting the iCON alpine snow management solution. caroline.tyra@leicaus.com

Phillip Van Why | HKD Snowmakers

Philip is a master electrician, gearhead, and HKD Snowmakers' technical guru in the West. Phil can make snow at Breckenridge and Copper Mountain simultaneously, while rewiring a fan gun and helping his oldest son with homework. With four young boys at home, it's conceivable that he has set the world record for the most viewings of "Cars" by any one individual. phil@hkdsnowmakers.com

Tim Yates | Safehold Special Risk

Although just entering his third year in the Safehold Special Risk insurance program, Tim is a 25-year veteran in the ski industry. Over those 25 years, he has split his time at the resort level as a ski patroller and risk manager. In the latter role, he has provided claims and loss control services to the ski industry as an insurance representative. He resides in Reno, Nevada, and covers the Western US. timothy.yates@safehold.com



Timberline Staff

Logan Stewart, Mountain Ops Manager

After receiving a degree in Ski Area Management, Logan returned home to Mt. Hood and began working at Timberline. Logan is currently the mountain operations manager for the ski area. This includes oversight of Timberline's world-renowned summer operations and terrain parks. Logan's favorite flower is the rhododendron. He spends free time in a competitive dog grooming league where he applies his park grooming experience to his K9 Kevin's unruly coat. He's quite proud of their recent wins in local competitions. He's dying to show pictures of Kevin to anyone who asks. It's really quite impressive. lstewart@timberlinelodge.com



Steve Kruse, General Manager

Steve came to the ski industry after he lost his bid to get men's synchronized swimming recognized by the Olympic Committee. His aquatic background has served him well, as it developed his ability to hold his breath for a long time while smiling. You may find him demonstrating this skill throughout most of Cutter's Camp. Remove your hat when in his presence. skruse@timberlinelodge.com

Ricky Hower, Marketing Manager

The marketing manager every park crew wishes they had: someone who has done it. Like Drake, Ricky started at the bottom, literally in the poo, cleaning toilets at Timberline. The one-time park digger then worked his way up to his current spot. Ricky has a deep knowledge of the ski industry, covering both ski resorts and the "industry side" thanks to his time as Airblaster's Regular Guy. Ricky's dedication to our industry feeds his addiction to living a life of short shorts and sweet nectar powder boarding. rhower@timberlinelodge.com

Tyler Wike, Terrain Park Manager

Tyler is the terrain park manager at Timberline. He started his career working at the neighboring resort, Skibowl. After a couple years working as the night ski shift supervisor, he landed a job on the park staff at Timberline in 2010 and worked as a park attendant before accepting the park supervisor position for another two years. In 2012 he became a freestyle/park groomer, and in 2014 Tyler accepted the position as park manager. Since then he has managed the Timberline Terrain Parks, enjoying all aspects of terrain parks—raking, training, grooming, building, and designing—with help from his day staff employees and the builders/groomers. twike@timberlinelodge.com

Jesse MacDonald, Grooming Manager

Jesse started his career as a snowboard instructor at Smugglers' Notch, Vt., from 2000 to 2003. And after many years ripping all suitable hills around on his black snow 135 legend se (that's special edition for the uninitiated), Jesse headed west from New York in search of the endless winter. His first stop was Mt. Hood Skibowl, where he became the terrain park manager in 2004 and then bike park manager as well starting in 2006. In 2012 he moved across the street to Timberline and worked as a grooming operator for three years before becoming the grooming manager in 2015. He and his crew humbly try to uphold the flame handed down from pioneers previous, and not catch dysentery along the way. jmacdonald@timberlinelodge.com

On-Hill Coaches

Lucas Oullette, Arena Snowparks

Mike Rowley, Alyeska Resort, AK

TJ Maloney, Mt Hood Meadows, OR

Caleb Hamilton, Timberline, OR

Danny Shupe, Timberline, OR

Jacob Reethes, Timberline, OR

A snowmaking machine is the central focus, positioned in a snowy field. It has a blue and yellow body with a long, silver telescopic arm extending upwards. The arm ends in a yellow nozzle that is spraying a fine mist of water into the air. In the background, there is a rustic wooden cabin with a stone chimney, and further back, a large, snow-covered mountain under a clear blue sky. The ground is covered in a layer of snow, and some metal frames are visible in the mid-ground.

HKD^X VOLT

Simple and Affordable

HKD^X
SNOWMAKERS



No resort is quite like yours

Team up with us today.

Rob Andrews, Seattle, WA
360-787-9887
robert.andrews@safehold.com

Bill Curtis, Lakewood, CO
720-543-8066
william.curtis@safehold.com

Ryan Patrick, Portsmouth, NH
603-570-5218
ryan.patrick@safehold.com

No insurance program delivers solutions quite like ours. We recognize that your business faces a unique set of risks every day. Our sports and recreation teams can help you assess and minimize those risks so you can focus on running your business.

We proactively consult with you to build the right insurance solutions — so you can feel confident that you have the right coverage in place to protect your business now and for the long term.

Products and services are offered through Safehold Special Risk, Inc., dba Safehold Special Risk & Insurance Services, Inc. in California. Coverage is provided by unaffiliated insurance companies.

© 2018 Safehold Special Risk, Inc. All rights reserved.

CAMP SPONSORS




BURTON SNOWBOARDS

www.burton.com
Adam Wiesner, Sr. Sales
Rep, PNW



BIGAIRBAG

www.bigairbag.com
Tomas Huting, CEO



BLACKSTRAP

www.bsbrand.com
Jim Sanco, Brand Manager



CAPTUE HEADWARE
www.captuerheadware.com



GOGGLESOC
www.gogglesoc.com



HKD SNOWMAKERS
www.hkdsnowmakers.com
Phil Van Why, Western Sales & Tech



LEICA GEOSYSTEMS
www.leica-geosystems.com
Caroline Tyra, North American Sales Mgr
Lukas Ingold, Leica Alpine
Business Development Specialist
Andi Muhlegger, Trigonos
Todd Hermesen, Leica Support Engineer



PISTENBULLY
www.pistenbully.com
Colin Hales, Regional Manager
Megan McClelland, Marketing
Jim Grewe, InterMtn Regional Manager
Ryan Seelye, PB Representative/Coach
Chauncey Sorenson, Service Manager
Matthew Wilcox, Service Rep
Jeb Ellermeyer, Sierra Regional Mgr
Paul VandeGrift, Service Rep
Josh Nelson, SNOWsat Manager



PRINOTH
www.prinoth.com
Philippe Gosselin, Marketing Manager
Chris Weaver, Operations Manager
Zach Collins, Demo Operator
Florian Eder, Demo Operator
Michael Williams, Sales Representative
Walter Piekarz, Regional Sales Manager
Jason Smith, Regional Sales Manager
Conan Moudy, Service Technician



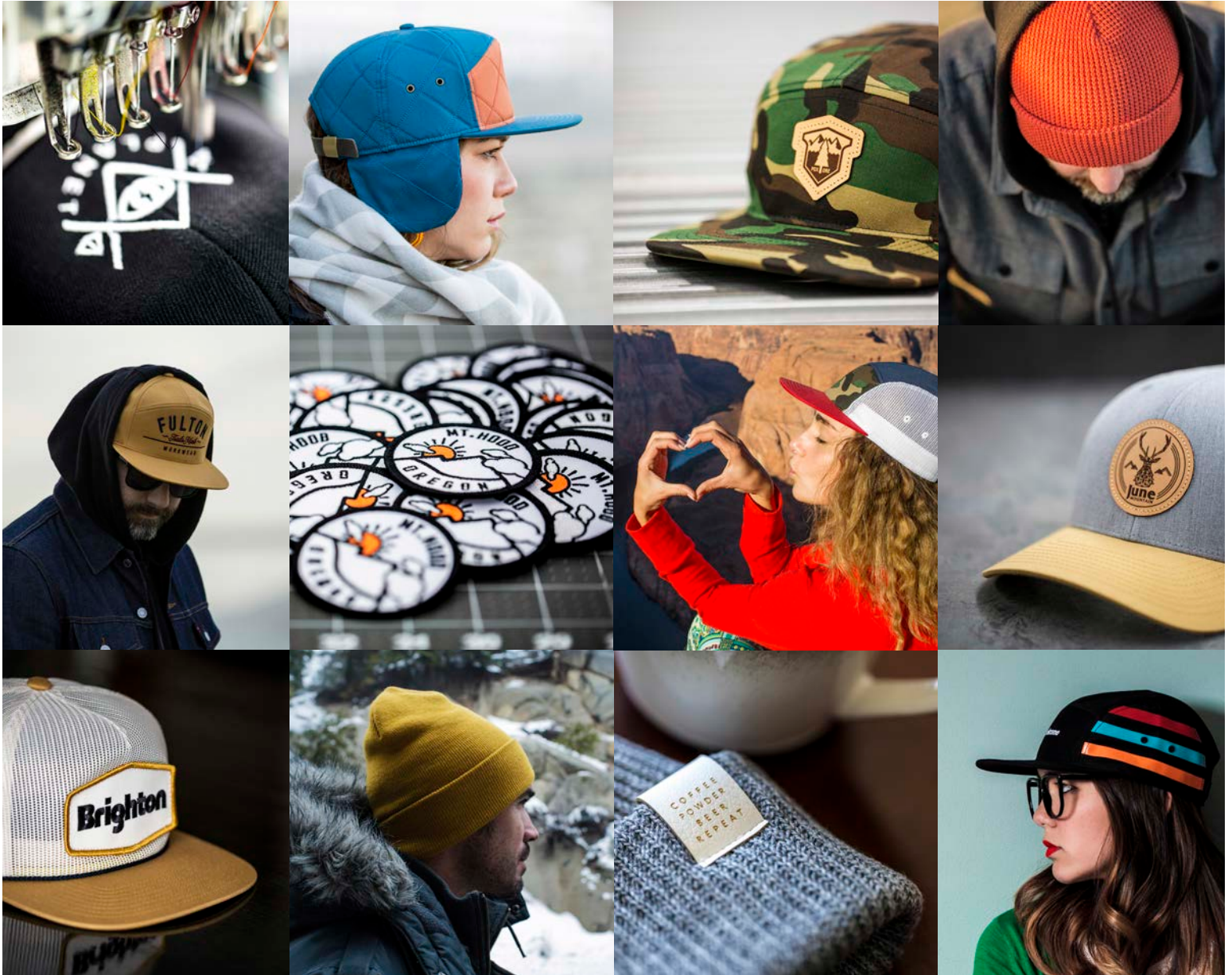
SOL SPORT PRODUCTIONS
www.solsporevents.com



SAFEHOLD SPECIAL RISK
www.safehold.com
Tom Scully, Specialty Claims Adjuster
Tim Yates, Specialty Claims Adjuster

CAPTUER

HEADWEAR



Quality Custom Headwear

AT **CAPTUER** WE BUILD CUSTOM HEADWEAR FOR YOUR BRAND.

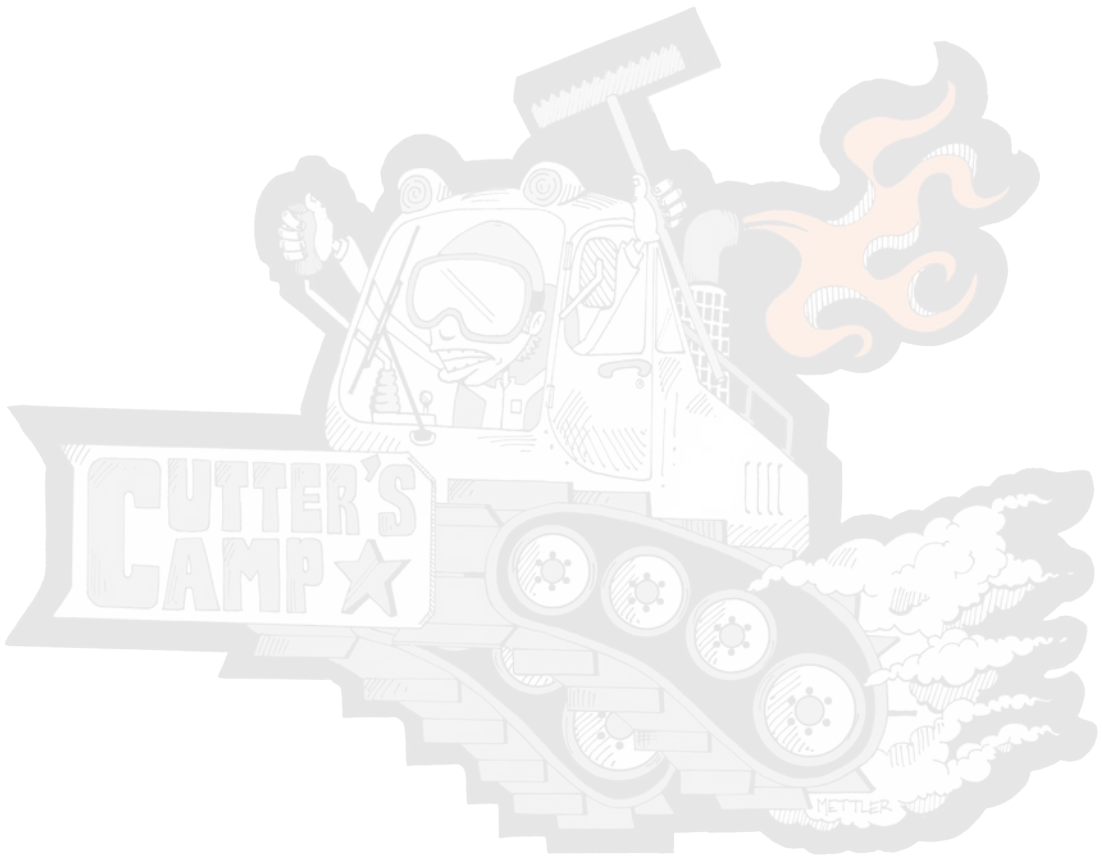
FOCUSED ON CREATING QUALITY, ON TREND, CUSTOM DESIGNED PIECES WITH FAST TURNAROUND AND UNBEATABLE MINIMUMS.

WE BELIEVE SIZE SHOULDN'T LIMIT CREATIVITY. FOUNDED BY SMALL BUSINESS OWNERS, TO PROVIDE NEXT LEVEL HEADWEAR TO THE TREND CRUSHING, DIY, STYLE DRIVING DESIGNERS, ARTISTS, & BRANDS.

////////////////////

HOLLER || @CAPTUER // WWW.CAPTUERHEADWEAR.COM

NOTES



NOTES

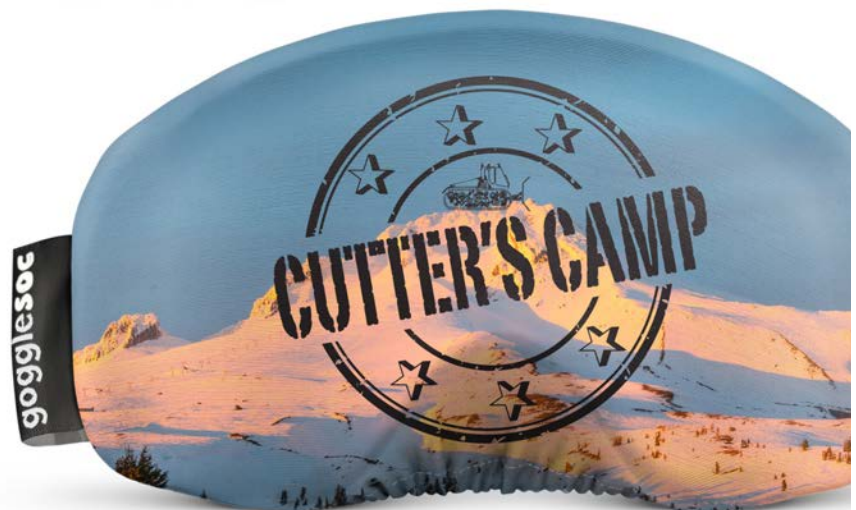
As a thank you for your hardwork – we love sponsoring the people responsible for all the fun times on the hill with **FREE PRODUCT.**

Lifties, parkies, groomers, instructors – get in touch to get some product for your crew.

Email us at andy@gogglesoc.com

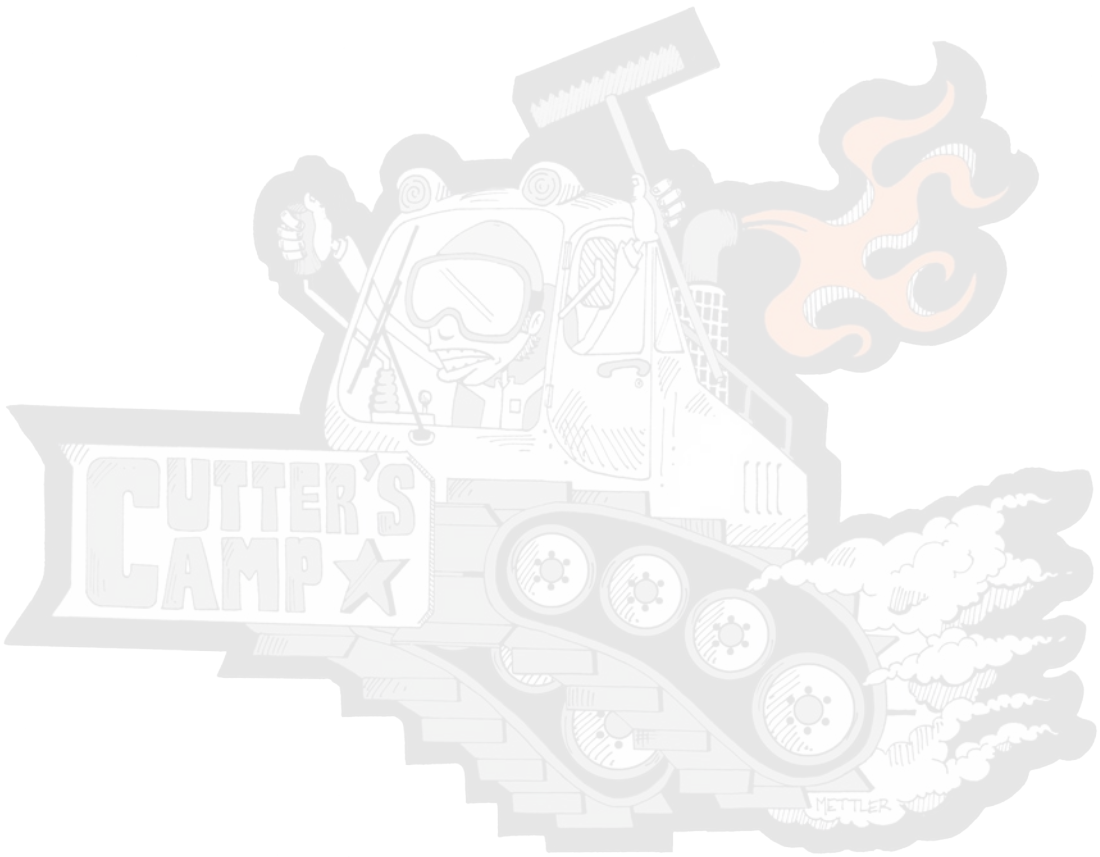


PROTECT YOUR GOGGLES IN STYLE.



Check out our other designs at www.gogglesoc.com

NOTES



BIGAIRBAG.COM

THE ULTIMATE MULTIPURPOSE
ATTRACTION FOR SKI RESORTS



**STARTING AT
\$10,000**



GAME CHANGER

Get the most out of your snow conditions and
delight winter sports enthusiasts.



Leica iCON alpine

Sustainable

Lower fuel consumption
Fewer vehicle hours
Environmentally concious

Real Time

3D snow depth visualization
Snow groomer position
Precise snow making for
neuralgic locations

Intelligent

Targeted slope management
Super imposed snow
production analysis
Enhanced data for fun park
models, slope edges, water taps,
anchor points and shafts

And much more...



Contact Caroline Tyra for more information:

719 - 325 - 6985 / caroline.tyra@leicaus.com

- when it has to be **right**

Leica
Geosystems

SAM's 14th Annual Terrain Park Contest

We invite you to share your latest and greatest features and jibs, popular progression ideas, or awesome events with us. It can be your signature big air stuff, season-long events, or features that were so simple, yet so popular. It's all about taking chances and raising the bar, both in the Features category and the Events category. Please send a high-resolution photo plus a brief description to Sarah at sarah@saminfo.com.

2018 entries will run in SAM's upcoming November issue and on www.saminfo.com. Winners will receive a generous bag of loot from Burton Snowboards.

BURTON EXPERIENCE
SNOWBOARDING



snOWsat®

Professional slope and fleet management
with snow depth measurement

Snow is money!



**In the ski industry snow equals money,
manage your snow.**

- ⊕ Maximize skiable acreage by distributing your snow strategically
- ⊕ Optimize efficiency of grooming and snow making operations
- ⊕ Save money by using less water, energy, fuel and machine hours
- ⊕ Engage in a more sustainable approach to natural resource consumption

For more information please visit www.snowsatsat.com

SNOWsat builds on 50 years of PistenBully experience. Operators can see their position and snow depth to within ± 1 inches of accuracy in real time.



KÄSSBOHRER GELÄNDEFahrZEUG AG