

5 MAJOR AUCTIONS

#1 UNION SAND AND GRAVEL

Mr. Thomas Lewis - Retiring

Wednesday – February 10th, 2016 – 10:00AM

430 Liverman Mill Road
Ahoskie, NC 27910
(Union Community
- Hertford County)



#2 & 3 OPERATOR'S MANUALS & SERVICE MANUALS (AC & FORD)

February 17th & 18th, 2016

Lots begin ending at 7:00 PM each night!

ONLINE ONLY

WWW.RICHANDRICHAUCTIONEERS.COM

#4

DKR FARMS

Thursday – February 18th, 2016 – 10:00AM

1590 A. Canal Road, Pantego, NC 27860

Mr. Danny Respass - Retiring due to Health Reasons



EXTRA NICE!!!

#5

J. SPENCER SCOTT FARMS

SPENCER SCOTT - RETIREMENT

Thursday – February 25th, 2016 – 10:00AM

794 Church of God Road, Goldsboro, NC 27534



EXTRA NICE!!!

1

Union Sand and Gravel - Thomas Lewis Retirement Auction Wednesday – February 10th, 2016 – 10:00AM

CONSTRUCTION EQUIPMENT AND SANDPIT REAL ESTATE

Directions: In Union go 100 yards west to Liverman Mill Road, turn right and go 2 miles to sale site at gravel pit on right.



Partial Listing:

- 2006 Hyundai Robex 210LC excavator s/n 14094
- Hyundai Robex 290LC-3 excavator s/n 10537
- 2004 Hyundai 757-7 wheel loader s/n 110150
- Hyundai 757-7 Wheel Loader s/n 110873
- 2006 Power screen Chieftain 1400 s/n 6617173
- 1989 John Deere 644E Wheel Loader s/n 518180
- John Deere 544C Wheel Loader s/n 504268
- Catepillar D25C Off Road Truck
- John Deere 4 cylinder diesel water pump
- John Deere 6 cylinder diesel water pump
- Garfield Box Blade – Pull type
- Metal Screen
- Chevrolet C6500 with Johnnie Gregory Dump Body
- 2000 Ford F350 with service body

2003 Chevrolet 2500 truck

Sandpit and Real Estate will sell at the conclusion of the equipment auction.

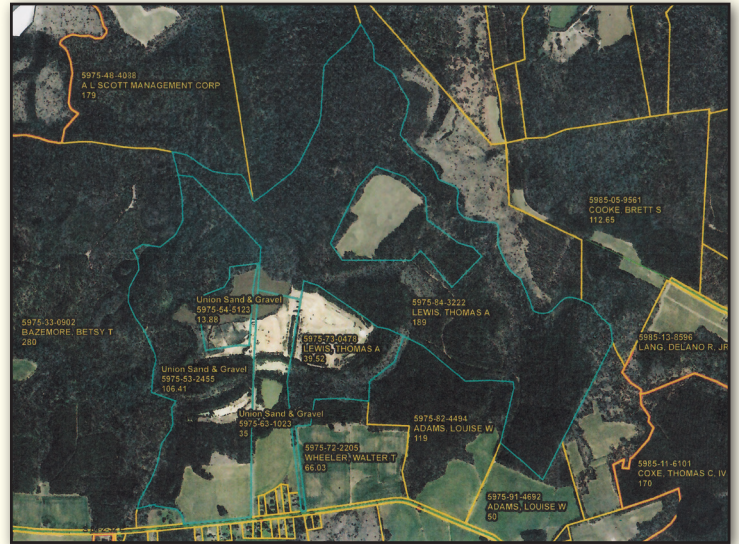
The tax description for Union Sand & Gravel is tract 1 containing 35 acres +/- tax pin #5975-63-1023, tract 2 containing 13.88 acres tax pin #5975-54-5123, tract 3 containing 106.41 acres +/- tax pin #5975-53-2455, and tract 4 containing 39.52 acres +/- in Hertford county, totaling about 194.81 acres according to tax maps.

For details concerning the real estate, please contact Harold Miller - BIC for Rich and Rich Bonded Auctioneers' Real Estate Division NCRBL# 14999 at (252) 578-6612.

EXTRA NICE EQUIPMENT!!!



ENDLESS POTENTIAL!!!



2 & 3 OPERATOR'S MANUALS & SERVICE MANUALS (AC & FORD) FEBRUARY 17TH & 18TH, 2016

LOTS BEGIN ENDING AT 7:00 PM EACH NIGHT!!!

ONLINE ONLY!!!

**ONLINE BIDDING AVAILABLE! WWW.RICHANDRICHAUCTIONEERS.COM
FOR TECHNICAL SUPPORT REGARDING ONLINE BIDDING OR WEBSITE RELATED ISSUES, PLEASE CALL (919) 595-2959**

4 DKR FARMS – MR. DANNY RESPESS - Retiring due to health reasons Thursday – February 18th, 2016 – 10:00AM

FARM EQUIPMENT AUCTION - PANTEGO, NC 27860 - Wenona Community

1590 A. Canal Road; 35° 43'-94" N, 76° 37'-51" W

Directions: AT STOPLIGHT IN PLYMOUTH: Take Hwy 32 South for approximately 4 miles; turn left onto Hwy 45-99 and go approximately 6 miles to Railroad Bed Rd. Turn left and go 3/4 mile to Lake Rd, then turn right and go 3/4 mile to A. Canal Rd. Watch for signs.

Tractors, Sprayer, & Forklift

Case IH MX285 MFWD, 380/80R38 front tires with duals, 480/80R50 rear tires and duals, 4 hydraulic remote outlets, outback guidance, showing 5407.7 hours

Case IH 7250 MFWD, JJA0060369, 4 hydraulic remote outlets, 420/90R30 front tires, 480/80R46 rear tires, showing 9249 hours

John Deere 8300 MFWD, 420/90R30 front tires, 18.4R46 rear tires, 5 hydraulic remote outlets, large 1000 pto, outback guidance package, delco AM/FM/ Cassette with weatherband, 16 weights, RW8300PO27953, Showing 8418.5 hours

International 1066

John Deere 4730 Sprayer, NO4730X008287, 380/90R46 tires with front guides, Delphi CD, Starfire guidance, Autotrac SF2, Pivot Pro Demo, Itec Pro Demo, Iguide Demo activations currently, showing 1628.8 hours

Toyota 8,000lb Forklift with long forks and turn head

Combine & Headers

John Deere 9660 STS Grain Combine, HO9660S716256, 1250/45-32 drive tires, 28L-26 rear tires, 4WD, DELCO AM/FM/ SAT radio with CD, 2268 engine hours, 1762 rotor hours

John Deere 1293 Corn head, 12 row, HO1293X710967 2014 MacDon FD75-S Flex Draper Grain Platform, 30 ft. platform

EZ Trail 672 header trailer

EZ Trail 672 header trailer

EZ Trail 672 header trailer converted to flail mower transport

Trucks & Trailers

2000 Cheverlet 3500 w/ a Knapheide Body

Ford 8000 w/ Johnnie Gregory Dump and Live Tandem

1989 Ford Areomax L9000, 7 speed, showing 337,802 miles

1996 International 9200 6x4 manufactured 08/31/95, 2HSFMAHROTCO73350, EATON FULLER transmission, 11 R 22.5 tires, Showing 549,200 miles

ATM Frameless Tub Trailer w/ O'Brian Canvas

Ravens 39ft Dump Trailer

Field Equipment

Brent 1082 Grain Cart, 900/60R32 tires, rollover canvas, rear view and auger cameras, B31520116

Crustbuster Speed King 2 Tote Seed caddy

Case IH 1200 12 row stack fold planters with martin trash cleaners

John Deere 1890 air drill A01890S705203, CCS Delivery, 49 drops

Lanco all hydraulic manure spreader

John Deere 980 Field Cultivator

Remlinger Rolling Harrow

30 FT Roller

International 490 Disc Harrow, 28 foot

Rhino 137, 18 ft offset disc

John Deere 2623 VT Vertical Tillage Tool, 26.5 ft, Like New 10 Shank Ripper

Motor Grader converted to a pull type unit that works of tractor hydraulic

Miller Wire Welder

Hardee Ditch Bank Mower

Reddick Inline Drain Plow

2800 Gallon Tank mounted on a lowboy trailer

KMC 4 row Rolling Cultivator

Rhino RC 25 Flail Mower

Allis Chalmers Toolbar with Bed Shapers

Harriston 2020 8 Row Cultivator

KMC 12 Row Ripper Bedders with Dirt Door, Spring Reset Rippers

M&W 5000 Dynadrive

12,000 gallon Poly Upright Tank

Plus Many More Items not seen at press time



12 ROW



CASE IH 1200



30 FT. DRAPER



NICE SPREADER



WETLINE



LOADED - NICE

FARM EQUIPMENT AUCTION

794 Church of God Road, Goldsboro, NC 27534 - PATETOWN COMMUNITY (WAYNE COUNTY)

Auctioneer's Note: Mr. Scott has decided at the age of 58 years old to retire from farming and to pursue other interests. Mr. Scott has employed Rich & Rich Auction Company to liquidate his farm machinery at ABSOLUTE auction. Most of the equipment in the auction is 1st and 2nd owner equipment and all the equipment has been primarily operated by Mr. Scott. Come prepared to buy bring your trailers and bring a friend. We will be accepting non-conflicting consignments on this auction.

CALL OUR OFFICE TODAY WITH YOUR CONSIGNMENTS!!

Directions: Being on Interstate 795 between Wilson, North Carolina and Goldsboro, North Carolina; Take Exit 18 toward Pikeville, at the top of the ramp take Pikeville Princeton Road NW towards Pikeville for 1.9 miles (Be advised there is a raised railroad track you may need to avoid just inside town) bear left onto Lancaster Road and proceed 4 miles to Highway 111N, turn right on Highway 111N and continue ½ mile to Church of God Road on the left, Turn left and proceed approximately 1.4 miles to the sale site on the right.

Tractors

John Deere 7820 MFWD, Cab/Air/Heat, 16.9R30 front tires, 480/80R46 rear tires with duals, 12 front suite case weights, Green Star Ready, Power Quad with left hand shuttle shift, 3 hydraulic remote outlets with power beyond, RW7820RO32396, showing 2978.7 hours – One Owner

John Deere 7810 2wd, Cab/Air/Heat, 11.00-16 front tires, 18.4R42 rear tires with duals, full deck 14 large suite case weights, Quick Hitch, 540/1000 reversible pto, 3 hydraulic remote outlets, twin cylinder lift assist, outside exterior hitch control switches, swing out hazardous loads lights, power quad transmission, 4643 hours showing, Jensen AM/FM/Weather band radio, EZ GUIDE 250 Equipped, long axles, This Tractor would make a super nice Tobacco Tractor!

John Deere 7200 2wd, Cab/Air/Heat, dual hydraulic lift assist, 10.00-16 front tires, 18.4-38 rear tires, 3 hydraulic remote outlets, long axles, RW7200H002048, Showing 5898 Hours showing RIGHT SIZE!

Combine & Headers

John Deere 9670 STS Bullet Rotor Grain Combine, HO9670S730997, canvas throat cover, 520/85R42 Drive Tires with dual ready deep dish rims and duals, 28L-26 rear tires, 4wd, Maurer Hopper Extensions, Delphi AM/FM/CD, Trimble Monitors, John Deere Command Center, 1761 engine hours, 1123 rotor hours, Mr. Scott is the 2nd owner, machine came off of a clean local farm.

John Deere 693 Corn head, 6 row 30", H00693X705543

John Deere 630F Grain Platform, 30 ft. platform, Hydra flex, 1H00630FJD0765153, large auger, full finger drum, Stainless Steel Floor plate, poly fingers with minimal wear or clipping, hydraulic fore/aft, poly row crop dividers as well as shop made steel dividers, Late Model – One Owner

KillBros UT130 Header Cart

Trucks & Trailers

1995 International 4700 DT466 4x2 176WB ST 748 11R22.5 tires, automatic transmission, air brakes, manufactures January 6, 1995, Chelsea PTO control, Panasonic AM/FM/Cassette, Double A All Steel Like New Body with 14 feet long and 4 feet high, with 3 individual dump gates, VIN #: 1HTSCAAN3SH685473, Showing 155,275 Miles

1995 International 4700 DT466 4x2 176WB ST 748 11R22.5

tires, automatic transmission, air brakes, manufactures January 6, 1995, Chelsea PTO control, Panasonic AM/FM/Cassette, Double A All Steel Like New Body with 14 feet long and 4 feet high, with 3 individual dump gates, VIN #: 1HTSCAAN3SH685475, Showing 183,147 Miles

1996 GMC Top Kick Cat Diesel, 5 speed with reverse, 295R22.5 tires, bench seat, manufactured 08/95, 16 foot all steel body with 4 foot sides, VIN #: 1GDJA1J1TJ502175, Showing 206,078.1 miles

1988 International Cab Over Road Tractor, 9 speed Fuller Road Ranger Transmission, 11R24.5 tires, vin #: 1HSRDGVR7JH583464, Showing 342,111.4 miles, Nice Farm Truck.

1994 Timp Super Hopper Bottom, 2 drop, manufactured 7/93, 11R24.5 tires, 1TDH42221RB085501 Chevrolet C60, CCE617U104798, 4 speed with reverse, this was Spencer's water truck

2001 Dodge Ram 1500 truck extended cab with leonard bed cap, VIN #: 3B7HCBZ41G244659, Showing 122,551 Miles

Field Equipment

KMC 6 row Strip Till, 30" rows, fluted front coulters, dual closing tires behind ripper with single baskets with KMC lift assist reach kit and Late Model John Deere 1700 MaxEmerge XPplanters set up on 6 row 30" rows 1A01700RHCM750334 – Spencer bought the planters new and assembled the unit for corn and beans

John Deere 7300 Planters, 36" rows, 8 row, vertical fold, Yetter row cleaners – Nice planter, this was Spencer's cotton planter Case IH 3800 disc harrow, 21 ft., 26 front scalloped blades, 28 rear smooth blades, trash cleaner, light duty hitch, Unverferth spring loaded drag bar, JAG 0171332

Leinbach Line Post Hole Auger

FMC sidewinder inline drain plow, 540 pto with tailing wheel Chandler fertilizer spreader, SN10102, 11.25-28 tires, 540 PTO driven hydraulics, ground driven chain, twin spreader – NICE UNIT!

Agri-craft Fertilizer Tender on custom built twin axle trailer with Kohler Command Pro 10 motor (Belt Drive with electric start)

Sheppard 1000 gallon Nurse Tank – Nice unit

Westfield WR80-46 grain auger – Super Nice – *loading out soybeans at listing!*

Redball 420 Hooded Sprayer, 8 row stack fold, Hydraulic pump

Sheppard Layby Applicator
 Sheppard Layby Applicator
 Bush Hog SM60 Ditch Bank Mower, 12-04463
 Sheppard 300 gallon elliptical tank sprayer with 60 foot booms and hydraulic pump
 Case IH 5400 Mulch Drill, 20 foot, 32 drop
 2 Upright Poly 10,000 Gallon Tanks
 1 Upright Poly 4,000 Gallon Tank
 John Deere Duals with Hubs- 46"
 8x18 2 axle flatbed
 Hardee Long reach Mower LR 30/60, Joystick
 Bushhog 3214 Rotary Cutter
 Bushhog 9690 NoTill Drill
 John Deere 4 Row Cultivator
 International Harvester 6 Row 30" Cultivator
 36 ft 6" Speed King auger
 Ag Rain 3" travelling Irrigation Reel
 Long PTO Irrigation Pump with 6inch intake and 4 inch discharge
 Stacked Lot of 4inch Matheson Pipe (not locked down)
 Crustbuster Boll Buggy
 38 Blade International 480 Disc Harrow

Harrell Module Builder
 60Ft Sheppard Sprayer
 4x9 Utility Trailer
 Dayton 50KW/25KW Generator



Early Consignments

John Deere 8400 MFWD
 John Deere 4555 2wd
 John Deere 4760 2wd
 John Deere 4720 Sprayer - clean sprayer with 3142 hours
SELLS TO HIGHEST BIDDER!!

Plus Many More Items not seen at press time!



LONG AXLE



LIKE NEW



30"



2 OF THESE



SELLS ABSOLUTE



ONE OWNER



WWW.RICHANDRICHAUCTIONEERS.COM

WEBSITE AND ONLINE BIDDING TECHNICAL SUPPORT LINE: (919) 595-2959

Rich & Rich Bonded

Auctioneers Int. Inc.

P.O. Drawer 300

Rich Square, North Carolina 27869

Return Service Requested

NCAL# 3649 VAAL# 2400

NCFL# 7990 VAFL# 730

NCRBL# 14999

VARFL# 0226025779

SCAL# 4535 SCFL# 4059



Don't forget the Waverly Ruritan
Club Auction, March 9th! Call
Raymond for details: 804-731-3434

Also don't forget the Seaboard Lions
Club Auction April 30th! Contact
your local member for details!

PRESORTED
First Class Mail
U.S. Postage
PAID
Raleigh, NC
Permit No. 2483

FIRST CLASS MAIL
Dated Material
Do Not Delay

Your Permanent Buyers' Number Is

Please Check To Insure Your Mailing Address Is Correct

TERMS & CONDITIONS: Cash or Good Check, All Items are Sold As -Is, Where-Is, with no warranties or guaranties either expressed or implied by the auctioneers, auction company, and/or its associates. Announcements made the day of the sale take precedence over any and all printed materials. **Buyers are responsible for inspecting equipment prior to the auction and can not hold the auction company liable for descriptions made without the buyers prior viewing. All Sales are Held Rain or Shine!!** Loaders availability stated in opening auction announcements.

Loading is provided as a convenience to our buyers and auction company can not be held responsible for damages caused to personal property during loading. By registering to bid or by using the permanent number to which you have been assigned, the buyer agrees to adhere to all terms and conditions set within this brochure and any terms to which may be stated by public announcement the day of the auction. **There is no on-site convenience fees for cash or good check.**

Online bidders 3% convenience charge on these sales. Online purchasers must make payment arrangements within 48 hours of the auction. All sales, Internet and on-site, are final. You are responsible for items physically and financially after purchase. Absentee and telephone bidders must contact the auction company 24hrs prior to the auction. There will be a \$50 non-refundable fee for telephone bids at the auction. Successful telephone and absentee bidders will be charged a 5% convenience fee.

WE APPRECIATE YOUR ATTENDANCE AT OUR AUCTIONS!!

Richard Vaughan - Owner/Auctioneer
richard@richandrichauctioneers.com
Mobile: 252-578-9965

Bryant A. Roberson - Auctioneer
bryant@richandrichauctioneers.com
Mobile: 252-337-4276

Sandra Brannen - Office Staff
sandra@richandrichauctioneers.com

Glenn Warren - Auctioneer
Mobile: 252-567-8200

Jeffrey Smallwood
Loader Operations

800-420-3445 252-539-4286 252-539-4020 252-539-4077 (FAX)
Corporate Email: info@richandrichauctioneers.com

**FOR ADDITIONAL INFORMATION ON OUR AUCTIONS AND ONLINE BIDDING,
PLEASE GO TO WWW.RICHANDRICHAUCTIONEERS.COM**