

The Lowell

Plan F-2167

4 Bedroom / 3 Bath

3 Car Garage 2 Story Home

* Optional 5th Bedroom (B)

OR

Bonus Room (C)

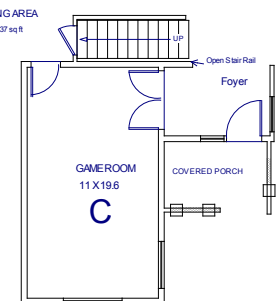
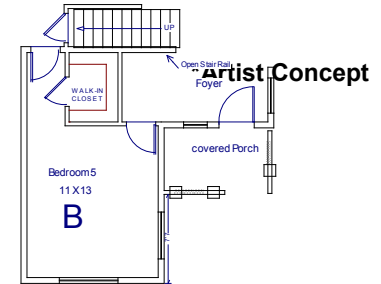
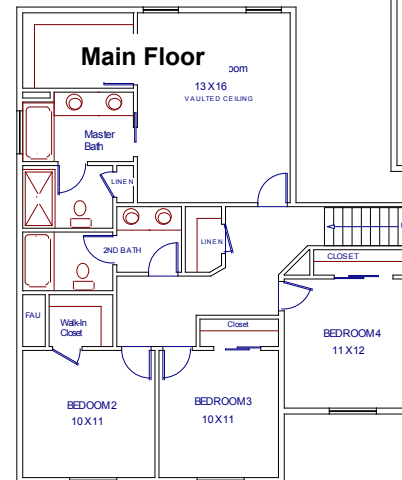
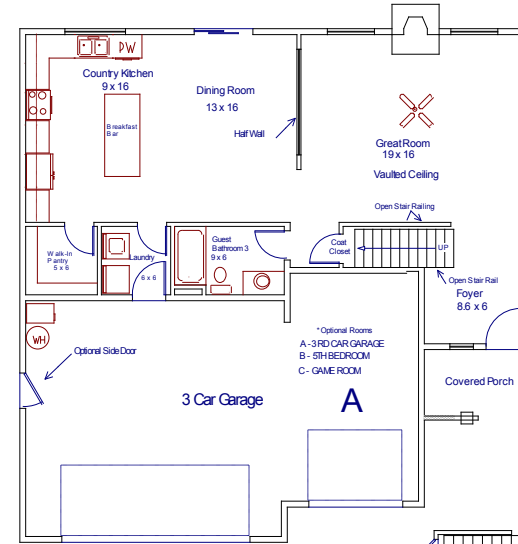
2167 Sq.Ft.



Front Elevation F1



Front Elevation F2



*Pacific Edge Development Constantly Strives to improve their Product, Therefore, Specifications, Design Features & Details are