

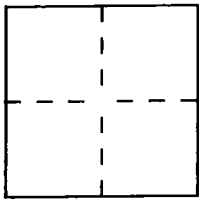
CORNER RECORD

PWFB 1720

Document Number 289

City of Glendale County of Los Angeles, California

Brief Legal Description Centerline Intersections of Palm Dr. and Pacific Ave.



CORNER TYPE

Government Corner  Control   
Meander  Property   
Rancho  Other   
Date of Survey 12-23/98

COORDINATES (Optional)

N. \_\_\_\_\_  
E. \_\_\_\_\_  
Zone \_\_\_\_\_ Datum \_\_\_\_\_  
Elev. \_\_\_\_\_

Corner — Left as found  Found and tagged  Established  Reestablished  Rebuilt

Identification and type of corner found: Evidence used to identify or procedure used to establish or reestablish the corner: Found as described on the reverse of this sheet. Points tied out 12/22/98 prior to the paving efforts by the city of Glendale.

A description of the physical condition of the monument as found and as set or reset: \_\_\_\_\_  
These ties are for the purpose of perpetuating the found monumentation. No claim is made as to the relationship of the points or lines shown hereon to true boundary location.

SURVEYOR'S STATEMENT

This Corner Record was prepared by me or under my direction in conformance with the Land Surveyors Act on 12 - 24 - 19 98.

Signed [Signature] L.S. or R.C.E. Number L.S.5411



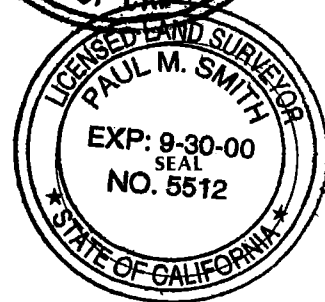
COUNTY SURVEYOR'S STATEMENT

This Corner Record was received JAN 04 1999 19 \_\_\_\_ and examined and filed FEB 08 1999 19 \_\_\_\_.

Signed Paul M. Smith Title \_\_\_\_\_

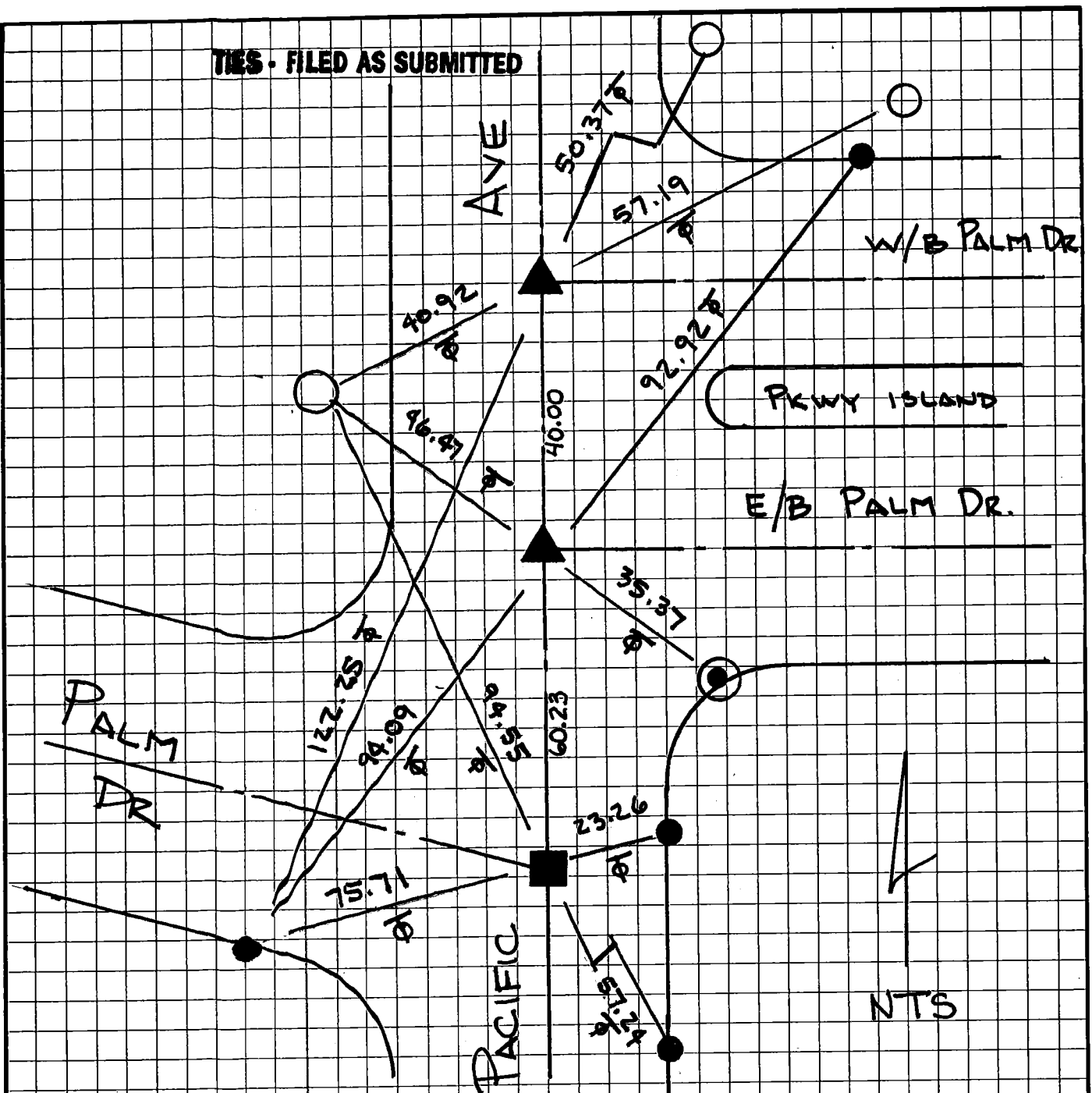
DEPUTY COUNTY SURVEYOR

County Surveyor's Comment BRR



**TIES - FILED AS SUBMITTED**

TIES - FILED AS SUBMITTED



- ▲ - FD SPIG/W L.S. 6771 No REF. AFTER CONST.
- - FD 4" C" NAIL SPDRS. AT M.H. No REF AFTER CONST.
- - FD L/T PER CITY OF GLENDALE TIES PG. 92 BK. 121
- - FD L/T IN SIDEWALK PER CITY OF GLENDALE TIES PG. 92 BK. 121
- ⊙ - FD L/T L.S. 6771 IN CURB No REF.