

Meguiar's
since 1901



Detailing Guide

Washing

Featured products

CAR WASH

When you wash your car, use a car wash shampoo and conditioner, which will enhance the appearance of your paint finish while flushing off loose contaminants. All Meguiar's washes are environmentally safe and do not strip polish and wax.

Ultimate Wash & Wax **£13.99** RRP

NXT Generation Car Wash **£5.99** RRP

NXT Car Wash **£14.99** RRP

Gold Class Car Wash Shampoo & Conditioner
£5.99 RRP

Gold Class Car Wash Shampoo & Conditioner
£15.99 RRP

Soft Wash Gel **£5.99** RRP

GRIT GUARD®

Grit Guard helps prevent swirl marks inflicted during the wash process by removing small particles of dirt and debris which would otherwise be rubbed across the surface of the paint. The Grit Guard fits snugly into the bottom of the available bucket. This will help remove dirt and leave it safely at the bottom of the bucket. The handy seat lid provides a useful closure for the bucket and a comfortable seat.

Grit Guard **£11.99** RRP

Grit Guard & Bucket **£18.99** RRP

Grit Guard, Bucket & Seat Lid **£22.99** RRP

WASH MITTS

Using a sponge during the washing process inflicts swirls and light scratch marks. This is because the tiny particles of dirt are trapped between the flat face of the sponge and the paint surface. By using a wash mitt these particles will be absorbed up into the pile and do much less damage.

Microfibre Wash Mitt **£9.99** RRP

Lambswool Wash Mitt **£9.99** RRP

DRYING AIDS

Meguiar's advocate the use of either the fully synthetic Microfibre Water Magnet which helps produce spot free results, or a Meguiar's Natural Chamois which offers unsurpassed thickness and delivers maximum absorbency and durability for a natural chamois.

Water Magnet **£12.99** RRP

Natural Chamois **£17.99** RRP



Washing

User's guide

The vehicle should be hosed down while the bodywork is cool or in the shade. A jet wash can be used, however be cautious not to work too closely to the panel and always spray at a 45 degree angle, this will blow the dirt and grime away from the paintwork. It is important that the bottom third of the car is rinsed thoroughly as this is where much of the road dirt and salts accumulate. (Fig.1 and 2)

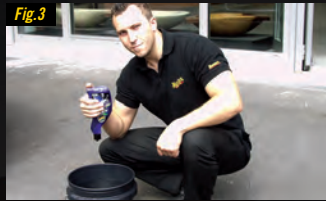
Fig.1



Fig.2



Fig.3



More than half of all the people who wash their own car use dishwashing detergents. These dishwashing detergents strip off all of your wax protection and then pull the vital oils out of the paint just like too much detergent does to your hands. This dries your paint out and accelerates the oxidation process. When you wash your car, only use a car wash shampoo and conditioner, like Meguiar's NXT Shampoo. This will enhance the appearance of your paint finish without stripping polish and wax while flushing off loose contaminants. (Fig.3)

Use the two bucket method or bucket and grit guard, to ensure the dirt is separated from the main washing solution. The grit guard inserts into the bottom of the bucket and the fins of the grit guard stop any sediment being swirled back into the washing solution. The two bucket method uses one bucket of car wash solution and one of clean water. Firstly charge the wash mitt with the soapy car wash solution and wash the panel. Before re charging the wash mitt with car wash solution, rinse it in the clean water. This will separate the dirt and grit from the car wash solution, meaning even less swirl marks will be inflicted.

Fig.4



Fig.5



Fig.6



Sponges are a major contributor to the infliction of fine scratches or 'swirls'. This is why Meguiar's recommend using either a Lambs Wool Wash Mitt or Microfibre Wash Mitt (Fig.4). The wash mitt allows for swirl-free washing by lifting and trapping dirt within its pile. It is important to rinse the wash mitt every time it is dipped back into the wash solution, so that any loose grit is freed from the mitt.

Once the vehicle has been washed, carry out a final rinse with a free flowing stream of water. This will help create a sheeting effect, which will reduce the drying time. (Fig.5)

Any water that is left on the surface can be removed with a Water Magnet. This large microfibre drying towel gives fast and spot free results, reducing the time it takes to dry your vehicle. Inner door edges should also be cleaned, as water and dirt can also build up here. (Fig.6)

Tip: Meguiar's are frequently asked which is better, a Water Magnet or Natural Chamois. The Water Magnet is more durable in that it can be machine washed after use (do not use fabric softener). A Chamois must be regularly maintained to ensure it has a long life.

Surface Preparation, polishing and Waxing

Featured products

CLAY

Stubborn contaminants bonded to the surface of the paint can be quickly and safely removed using either the Meguiar's Quik Clay Kit or Smooth Surface Clay Kit.

Replacement Smooth Surface Clay Bar **£9.99** RRP

Quik Clay Kit includes: 473ml Quik Detailer, 1 individual wrapped 50g clay bar **£14.99** RRP

Smooth Surface Clay Kit: 473ml Quik Detailer, 118ml Cleaner Wax, 1 Supreme Shine Microfibre and two individually wrapped 50g clay bars with plastic storage box **£25.99** RRP

SCRATCH & SWIRL REMOVAL PRODUCTS

Meguiar's introduce a new range of products containing all new super micro-abrasive technology. SwirlX removes light and minor spider webs and towel marks. ScratchX 2.0 is an isolated scratch and scuff removal product, which leaves a high gloss finish. Ultimate Compound is ideal for removing stubborn oxidation, stains and deeper swirls.

SwirlX 450ml **£9.99** RRP

ScratchX2.0 207ml **£8.99** RRP

Ultimate Compound 450ml **£9.99** RRP

WAX

If you want to optimize both appearance and durability of your paint finish it is always best to use a premium car wax such as Meguiar's Gold Class Wax, or NXT Generation Tech Wax 2.0.

NXT Tech Wax 2.0 Liquid 532ml **£17.99** RRP

NXT Tech Wax 2.0 Paste 311g **£17.99** RRP

Gold Class Carnauba Plus Premium Wax Liquid 473ml **£15.99** RRP

Gold Class Carnauba Plus Premium Wax Paste 311g **£15.99** RRP

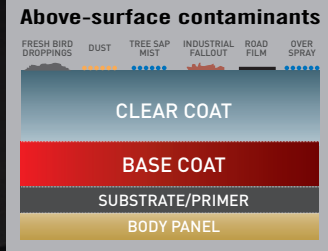
Cleaner Wax Liquid 473ml **£8.99** RRP

Cleaner Wax Paste 311g **£8.99** RRP

Step 3 Carnauba Wax 473ml **£8.99** RRP

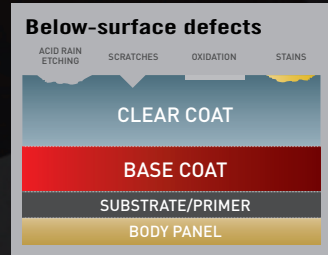


Surface Preparation



Any above surface contaminants such as tree sap, industrial fall-out and tar can be removed using the Quik Clay Detailing system. Use half a bar of clay (approx 25grams) work the half clay bar in your hands making it malleable enough to fold into a disk about 5 cm across. Ensure the clay and panel are well lubricated with Meguiar's Quik Detailer and work the clay from left to right, using fingertip pressure only. Once completed the area worked should feel as smooth as glass. The clay is also suitable for headlights, chrome and any high gloss surface. (Fig.1)

After working each panel you will find that the clay has safely removed the contaminants without scratching the paint surface. How much of the bonded contaminant the clay removes depends on the overall level of contamination. Keep folding the clay over and re shaping it until you no longer have a clean surface to work with. When this is the case you must dispose of the clay and use a new piece. Remove any lubricant residue with a 100% Cotton Terry Towel or Microfibre.



To remove scratches and swirl marks Meguiar's recommend using Ultimate Compound. This product contains Meguiar's new super micro-abrasive technology which quickly removes stubborn oxidation, stains, light scratches, blemishes and other sub surface defects while polishing the surface to a mirror finish. Ultimate Compound is the perfect choice to prepare your paint surface for your favourite Meguiar's wax. (Fig.2, 3 and 4)



Tip: When working with Ultimate Compound work against the direction of the scratch, and in straight overlapping lines. Before a scratch is worked on, use the finger nail test to see if it can be removed. If you can catch a fingernail in the scratch the defect will probably need to be removed by machine. (Fig.3)

Polishing, Waxing and Detailing



Applying the Meguiar's NXT Tech Wax 2.0 will provide protection against oxidation, corrosion, UV rays and surface degradation. Starting on the bonnet, apply the NXT to the applicator pad, ensuring you use very small amounts. A blob of product the size of a one pound coin on the applicator pad will be enough to cover half a bonnet on most cars. Allow the wax to cure, and then remove with a 100% Cotton Terry Towel or Microfibre. Ultimate Quik Wax can be used as a top up wax from time to time. (Fig.6)

To generate additional gloss use the Deep Crystal Step 2 Polish. The Deep Crystal Polish is a pure polish that has been specially formulated to create a dazzling, high gloss, 'wet look' finish. Remove any residue with a 100% Cotton Terry Towel or Microfibre.

Tip: The Deep Crystal Step 2 Polish should not be allowed to fully dry and must be removed whilst still damp. By using the Polish you are not sealing the paint. The gloss created by Step 2 Polish must be sealed with a wax.



It is easy to keep that "just waxed" look every day by frequently using a mist & wipe product like Meguiar's Quik Detailer, NXT Speed Detailer or Ultimate Quik Detailer. Regular maintenance removes contaminants before they have time to bond to or etch into your paint finish. This is the missing link between washing and waxing that dramatically extends the durability of your car wax. Remove the detailer residue with a 100% Cotton Terry Towel or Microfibre.

There are three detailer products in the Meguiar's range. Quik Detailer is the perfect product to restore that show car shine and is a simple mist and wipe product. Containing Engineered Synthetic Polymers Meguiar's Speed Detailer gives a fast shine and offers enhanced polymer protection between waxes. Ultimate Quik Detailer leaves an Ultra-slick, Ultra-dark finish. This wax enhancing detailer creates incredibly high surface tension which adds protection and causes water to bead relentlessly wash after wash!

Tip: Quik Detailer and Speed Detailer can be used as lubricants for the clay. Ultimate Quik Detailer should NOT be used as a lubricant for clay.

Tips: Use the swipe test to check the wax has fully cured and is ready to remove. Swipe your finger across an area that has been waxed. If the wax residue comes off cleanly with your finger it is ready to remove. If it smears it needs to be left a little longer.

To maintain the finish in between car washes use the Ultimate Quik Detailer and Microfibre to remove light dirt, finger marks and contaminants. Lightly mist the detailer on a panel, fold the microfibre into 4 and wipe over the area to remove contaminant. Flip the microfibre over and buff off. If necessary, use the Versa Angle Body Duster before hand.

Before using microfibre cloths or terry towels, ensure that the care labels are removed. They are hard and could leave scratches in the paint. Also remove any jewellery and watches to avoid damage.

Questions & Answers

How many uses can I get out of each clay bar?

The life cycle of clay is limited. The best way to tell when it is time to get a new piece of clay is to check the colour and texture of the piece you are working with. As you rub the clay bar across the surface of your paint, you are picking up bonded contaminants. After some time, you “fill up” the clay with these particulates. You can tell when the clay is “full” because it will have a darkish colour and the clay might begin to feel rough to the touch. Another time to switch to a new piece of clay is if you accidentally drop the piece you are working with. When clay hits the floor, it will pick up large dirt particles from the floor, which can in turn scratch your vehicle if you continue using the clay. When your clay bar is “full” or has been dropped, we recommend you throw away that piece and utilise new piece of clay to avoid scratching the surface of your paint.

Which type of wax is better, a paste wax or a liquid wax?

The difference between paste and liquid wax is primarily one of convenience and personal preference. Meguiar’s liquid formulas provide the same protection as paste, and are easier and faster to apply. That said, there is something about spending a Saturday afternoon, leisurely applying a traditional paste wax to your pride and joy that people find both enjoyable and rewarding. This is especially true when the results from their efforts reflect their passion with an eye dazzling shine that makes passersby stop and look... and then look again.

Does a polish need to dry before removing it?

Unlike wax, a Meguiar’s polish does not need to dry before removing it. This includes our pure polishes and our cleaner/polishes. The way to properly use a Meguiar’s polish, is to thoroughly work the product into the surface one section at a time, then immediately remove the excess before beginning the next section. Apply a Meguiar’s polish as if you were applying a skin lotion to your skin. The more polish you apply the better the gloss. Do not apply too much at once however, because only a certain amount of polish can penetrate the surface at any one time. The excess polish will simply be removed when you’re wiping off the excess product, thus wasting time and product. Remember, thick, sloppy coatings of any company’s products are more difficult to remove than thin, even coatings.

Which Meguiar’s products are safe for use on fresh paint?

Aftermarket / refinish paint jobs continue to cure for two to three months after being sprayed onto the finish. During this curing time paint manufacturers recommend NOT to apply a “wax” or “protectant” to the finish. This is because solvents and other volatile paint components are still evaporating out of the paint. However, you can safely use many of Meguiar’s washes and polishes during this curing period on fresh paint without fear of causing any damage. Many of Meguiar’s polishes are wax and silicone free, and will not seal the surface of the finish. This means the paint can continue to properly cure throughout the recommended curing period.

How can I tell when I need to re-apply either a wax or a polish to my car’s paint?

Clear coat paints make it more difficult to determine when your car needs waxing or polishing. It may need attention far sooner than its appearance would indicate.

Two simple tests can tell you if your car needs waxing:

After washing and drying your car, take a clean, dry 100% cotton terry cloth towel fold it until you have a thick towel that your hand fits comfortably across with your fingers hanging over the edges, and then push down on it and twist it in a clockwise/counter clockwise manner. If you hear squeaking, that’s a sure sign you need to wax. Another sign is when products like Quik Detailer become slow and difficult to remove, this is a sure sign your paint needs a fresh coat of wax.

How long do I need to let a wax dry before removing it?

Under normal conditions, Meguiar’s waxes and paint protectants take approximately 15 to 20 minutes to dry. To determine whether the wax or paint protectant has cured enough to remove it, you can perform a “Swipe test”. To perform a Swipe Test, take your index finger and swipe it across the film of wax or paint protectant on your finish. If your finger wipes away the dried residue and the surface below is shiny, then the wax, or paint protectant, is ready to be removed. If however, you swipe the finish and the product streaks or smears, you need to allow a little more time for it to fully cure.

One popular misconception that we would like to address is the false idea that the thicker the layer of wax or paint protectant you apply at one time, the more protection you will leave behind. This is not true. Only a small amount of wax actually bonds to the finish during each application, while the rest is simply removed when you wipe the excess off the surface.

Wheels & tyres

ALLOY WHEEL CLEANER

Most alloy wheels now come with clear coat finishes that require special care. Do not use abrasives or scouring pads on these wheels. One of the safest, most effective wheel cleaners is Meguiar's Hot Rims. It contains no toxins or abrasives yet effectively removes stubborn road grime and brake dust and leaves the surface bright and shiny.

Hot Rims All Wheel Cleaner 710ml **£7.99** RRP

TYRE DRESSINGS

Avoid ordinary silicone emulsion protectants that cover surface contamination with a shiny synthetic coating. These cause tyre discolouration and decay. Clean your tyres while you dress them with a complex formula like Meguiar's Endurance High Gloss Protectant that cleans, beautifies and protects in one easy step, leaving tyres looking like new, and free of that "plastic" look. Hot Shine is for those who prefer a high gloss shine in a convenient trigger spray.

Endurance Tyre Gloss 473ml **£8.99** RRP

Hot Shine 710ml **£9.99** RRP

METAL POLYSH

Meguiar's revolutionary Metal Polysh cleans, shines and protects all uncoated metal surfaces. This product is ideal for cleaning and protecting highly polished Aluminium or chrome alloys. Engineered synthetic polymers leave behind a protective, synthetic barrier to shield against moisture and contaminants.

Metal Polysh 142g **£7.99** RRP

WHEEL ACCESSORIES

To help with wheel cleaning, Meguiar's have designed the Versa Angle Wheel Face brush to safely wash and clean any wheel surface. The Ultra Safe Wheel Spoke Brush is ideal for the more intricate wheels, the soft and broad bristles safely and quickly remove brake dust and road grime.

Versa Angle Wheel Face Brush **£11.99** RRP

Versa Angle Tyre Brush **£8.99** RRP

Ultra Safe Wheel Spoke Brush **£7.99** RRP



Wheels & tyres

It is important before attempting to clean wheels that both the wheels and brake callipers are cool. Do not spray Meguiar's Hot Rims All Wheel Cleaner directly onto the callipers, discs and tyres, and ensure the wheel cleaner does not dry on the wheels.



Hold the bottle approximately 10-20 centimetres from the wheel and spray from the bottom up, this will prevent the product streaking. After leaving the wheel for a minute, rinse off the residue thoroughly. (Fig.1, 2 and 3)



Tip: With highly polished aluminium wheels it is advised that the Meguiar's Quik Wheel Detailer is used. This easy to use high-speed cleaner is safe on all kinds of wheels including powder coated. Simply spray on the detailer and wipe off with a microfibre. If you are in any doubt please refer to the alloy wheel manufacturer cleaning guide lines.



Stubborn stains may need agitating; with either a wheel spoke brush or wheel face brush. Re apply the Meguiar's Hot Rims All Wheel cleaner if necessary. (Fig.4 and 5) To ensure the wheel is fully dry, wipe down the alloy with a Microfibre or 100% Cotton Terry Towel.



It is important to clean tyres before applying any sort of dressing. Use a car wash solution along with the Meguiar's Tyre brush. The soft yellow bristles on the edge of the brush help prevent scratching of the wheels. (Fig.6 and 7)



Wheels & tyres

Fig.8



Clean wheels should now be waxed and sealed. With chrome and highly polished aluminium wheels Meguiar's recommend the NXT All Metal Polysh. It cleans and protects the wheel from the environment. Apply a small amount of product to a foam applicator pad and work into the wheel. Let the product cure and then remove with a Microfibre or 100% Cotton Terry Towel. (Fig.8)

Fig.9



For clear coated alloy wheels a wax such as Tech Wax 2.0 can be used to help protect the wheels and aid with the up keep. (Fig.9)

Fig.10



Once the tyres have dried apply Meguiar's Endurance High Gloss Tyre Dressing. Apply this with a Meguiar's Tyre Dressing Applicator Pad for mess free results (Fig.10 and 11)

Tip: Allow all tyre dressings to be absorbed by the tyre before driving the vehicle.

Fig.11



Alternatively Hot Shine Tyre Dressing can be used. This product can be sprayed directly onto tyres, simply spray and walk away. A final mist over with Meguiar's Quik Wheel Detailer will ensure that any product overspray and excess dirt is removed. (Fig.12)

Fig.12



Before



After

Interior, Plastics and Leather Care

User's guide

DASHBOARD CLEANERS & DRESSINGS

Common silicone emulsion protectants cover over surface contamination, create glare on the dashboard and leave seats and steering wheels dangerously slippery. Use non-silicone vinyl cleaners and one step cleaner conditioners such as Meguiar's Natural Shine. For those who love shine, Meguiar's Supreme Shine Protectant is the fastest way to give a high gloss finish on dashboards, plastics and tyres without leaving a greasy finish.

Quik Interior Detailer 473ml **£7.99** RRP

Natural Shine Vinyl & Rubber Protectant 450ml **£8.99** RRP

Supreme Shine Vinyl & Rubber Protectant 450ml **£8.99** RRP



New and improved formulas available Spring 2010

LEATHER CLEANERS & CONDITIONERS

Only use specialised leather care products like Gold Class Leather Cleaner & Conditioner on new leather surfaces. Alternatively Meguiar's offers a two stage leather cleaner and conditioner. This two step system is ideal for use on older leather that is in need of attention.

Leather Cleaner & Conditioner 414ml **£8.99** RRP

Rich Leather Aloe Cleaner 473ml **£7.99** RRP

Rich Leather Aloe Conditioner 473ml **£7.99** RRP



OTHER INTERIOR SURFACES

Use safe, specialised cleaners such as Meguiar's Carpet & Interior Cleaner on carpets and fabric upholstery. This product safely removes coffee, lipstick, oil and other tough stains without discolouring the surface.

Meguiar's NXT Glass Cleaner has been specially formulated to give the best clarity through the toughest dirt. The advanced formula delivers streak free, no haze glass and superior cleaning against smoke film, bugs and tree sap.

Carpet & Interior Cleaner 473ml **£6.99** RRP

NXT Glass Cleaner 710ml **£8.99** RRP



Interior, Plastics and Leather Care



Modern vehicle interiors are made from many different materials: Plastic, rubber, leather, fabric, alcantara, carpet and glass. It is important that the most appropriate product is used for the specific surface. A versatile alternative is the Meguiar's Quik Interior Detailer which cleans and protects all interior surfaces. Simply apply to an Even Coat Applicator Pad and gently work over the surface. Remove any residue with a Supreme Shine Microfibre. (Fig.1 and 2)



Interior plastics should be treated at least twice a year, to clean and protect them. Meguiar's Natural Shine contains UV protectants to help reduce the drying and fading effects of the sun. To apply this product, spray a small amount onto an Even Coat Applicator Pad and work across the panel. Buff off any residue with a Supreme Shine Microfibre or 100% Cotton Terry Towel. (Fig.3 and 4)



Meguiar's Carpet & Interior Cleaner, is ideal for removing the most stubborn contamination on fabric without discolouring the surface. Before applying the cleaner, first ensure that any loose dirt and dust has been vacuumed. Apply the cleaner directly to the surface and leave for approximately 30 seconds, then wipe over with a Supreme Shine Microfibre or 100% Cotton Terry Towel. The All Surface Interior Brush is ideal to help loosen stubborn stains. (Fig.5)



Tips: For more delicate surfaces such as roof liners, dampen a microfibre and apply a small amount of Carpet and Interior Cleaner to it. Once cleaned, flip over the microfibre and buff off any residue (Fig.6).

Applying Carpet and Interior using a 100% Cotton Terry Towel or Microfibre will avoid tide marks.

Interior, Plastics and Leather Care



Meguiar's Car Odour Eliminator removes offending odours forever using permanent odour encapsulating technology pioneered and perfected by Meguiar's. Spray the car odour eliminator from a distance of approximately 30cm from the fabric/material. For best results leave to sit overnight. (Fig.7)



The NXT Glass Cleaner has been specially formulated to deliver the best clarity through the toughest dirt and grime. It is suitable on all tinted windows and is ammonia free. Simply spray the glass cleaner onto the window and wipe over with a Supreme Shine Microfibre. (Fig.8)



Leather seats and trim should be cleaned and conditioned at least twice a year. Meguiar's Gold Class Rich Leather Cleaner/Conditioner offers safe cleaning and conditioning without using harmful or harsh solvents. Before applying this product it is important to ensure the area has been vacuumed to ensure all loose dirt has been removed. The Triple Duty Detail Brush aids the cleaning process by dislodging any dirt caught in the seams of seats. Once this has been completed apply the Leather Cleaner and Conditioner with an Even Coat Applicator Pad and work in for approximately 1 minute. Once complete, wipe off any residue with a Supreme Shine Microfibre or 100% Cotton Terry Towel. (Fig.9, 10 and 11)



Other useful cleaning aids are the Hair and Lint Extractor. This product uses a small static-electric charge to draw hair and lint into the brush. The Slide Lock Detailing Brush has a sliding collar which negates the need for multiple brushes. It is ideal for cleaning surfaces from interior vents to exterior mouldings. (Fig.12 and 13)

Machine Polishing

MEGUIAR'S DUAL ACTION POLISHER

The Meguiar's Dual Action Polisher greatly reduces the amount of time it takes to apply paint cleaners, polishes and wax and gives results far superior than applying these products by hand.

Kit includes:

G220 Dual Action Polisher, W67DA 16.5 Centimetre, D.A. Polisher Backing Plate, Backing Plate Spanner, D Handle, Handle Attachment Bolts (2), Allon Key

Meguiar's Dual Action Polishing Machine **£149.99** RRP

SOFT BUFF 2.0 PADS

The new and improved, machine washable Soft Buff 2.0 pads reduce the amount of chatter for a smoother buffing experience and features a recessed backing for easy centering. The polishing pad is perfect for removing light to moderate defects and gloss restoration, whilst the finishing pad is ideal for waxing and gloss maximisation.

Foam Polishing Pad 7" **£13.99** RRP

Foam Finishing Pad 7" **£13.99** RRP

SCRATCH & SWIRL REMOVAL PRODUCTS

Meguiar's introduce a new range of products containing all new super micro-abrasive technology. SwirlX removes light and minor spider webs and towel marks. Ultimate Compound is ideal for removing stubborn oxidation, swirls and other below surface defects.

SwirlX 450ml **£9.99** RRP

Ultimate Compound 450ml **£9.99** RRP



Light swirl removal **Heavy**

Machine Polishing



Whether you're a seasoned professional or casual user who wants to achieve, quality, swirl-free results, this is the tool for you. The Meguiar's Dual Action Polisher greatly reduces the amount of time it takes to apply paint cleaners, polishes and protection products and produces results far superior to applying these products by hand. And because of its dual action – rotary and orbital, you never have to worry about burning the paint. It is important to remember that to completely remove a scratch the clear coat must be cut back to the lowest level of the scratch. It is sometimes the case that the much deeper defects can only be removed by a rotary machine or by re-painting.

Ensure that the vehicle is thoroughly washed and dried before attempting to machine polish. If there are above surface contaminants, remove these with the Clay Detailing systems covered in section 2. This will ensure that the defects can be correctly assessed, and as a result the correct product can be chosen.



Fig.1

It is important to tape over any plastic trims and bumpers, so that they remain clean. (Fig.1)



Fig.2

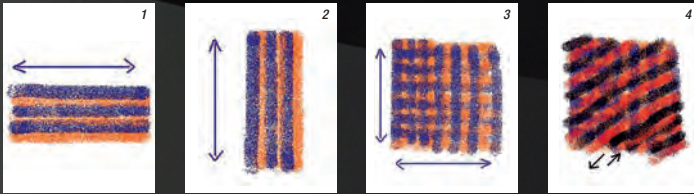
Before the application of the product to the pad, apply a small amount of Quik Detailer to 'prime' the pad. Then apply the Ultimate Compound Swirl X to the foam polishing pad in an X shape. (Fig.2)

Tip: All the work shown here should be carried out on cool paintwork and in a suitable work space. All the techniques mentioned can be applied to any other types of paint or gel coat. A halogen lamp will help show up any further defects. It is also important to remember to put the cable over your shoulder to prevent it dragging across the paintwork.

Machine Polishing

The machine should always be started and stopped whilst against paintwork, this will avoid product splatter. It is best to work on small areas rather than trying to tackle the whole vehicle in one go. Work an area approximately 50cm X 50cm and use slow overlapping movements, until the product has turned to a haze. Wipe away the residue with a Supreme Shine Microfibre, and if necessary apply some Quik Detailer to the panel if it is difficult to remove. Re-examine the defect and repeat until fully removed. There is no need to apply any pressure to the head of the machine, just use the handle to guide and steady the Meguiar's Dual Action Polisher.

The following diagrams indicate the best application movements using your Meguiar's Dual Action Polisher



1. Start working the product in overlapping horizontal movements.
2. Continue the overlapping in a vertical direction.
3. After completing steps 1 & 2 the panel should resemble the grid above.
4. A third application will go even further to ensure fuller defect removal.



Once the defects have been removed, it is important to then protect the paintwork by applying a wax. In this case we have used the NXT 2.0 and applied it with the W9207 Finishing Pad. The wax can be applied to the entire car in one go. Allow the wax to cure and buff off with a Microfibre. **(Fig.3)**

Tip: When applying a wax with the G220 only moderate pressure is required (the dead weight of the machine). The ideal speed setting for wax application is between speeds 1-3 as marked on the machine.