

POWDERED BY:

sam
SKI AREA MANAGEMENT

TIMBERLINE



BURTON
LEARN TO RIDE

PistenBully

Pinotti

Leica
Geosystems



RDO
INTEGRATED
CONTROLS

HKD
SNOWMAKERS

**10 BARREL
BREWING CO**



Safehold
SPECIAL RISK

bS *Black Strap*

CAPTUEE
HEADWEAR



gogglesoc



ARENA
SNOWPARKS



NEW ON THE SLOPES: HUSKY X **THE AGILE & FLEXIBLE** **PARK EXPERT**

COMPACT SIZE MEETS AGILITY AND FLEXIBILITY

- + Blade & tiller offer additional range of movement (vs. standard vehicle)
- + Narrow width allows for easy maneuvering
- + Eco-friendly Tier 4 Final engine technology
- + State-of-the-art cab optimizes visibility & comfort
- + Blade and vehicle inclinometers ensure perfect grooming & sculpting
- + Ideal for small scale park work or interior ski domes

prinoth.com

Prinoth



SCHEDULE AT A GLANCE

MONDAY, MAY 13

10:00 a.m. - 4:00 p.m.
10:00 a.m. - 3:00 p.m.
12:00 p.m. - 4:00 p.m.
5:00 p.m. - 6:00 p.m.
6:00 p.m. - 11:00 p.m.

Registration
Free Ski/Ride
Grooming Demos
Prinoth Fireside Chat
Dinner and Burton Welcome Party

TUESDAY, MAY 14

7:30 a.m. - 8:30 a.m.
8:00 a.m. - 12:00 p.m.
8:30 a.m. - 9:30 a.m.
9:30 a.m. - 10:30 a.m.
10:30 a.m. - 11:00 a.m.
11:00 a.m. - 12:00 p.m.
12:00 p.m. - 1:00 p.m.
12:45 p.m. - 4:45 p.m.
1:00 p.m. - 2:00 p.m.
2:00 p.m. - 2:15 p.m.
2:15 p.m. - 3:30 p.m.
3:30 p.m. - 4:30 p.m.
5:15 p.m. - 9:00 p.m.

Breakfast
Block 1: On-Hill Building
Marketing vs. Ops
Terrain Park Litigation: Part I
Morning Break
Groomer Tech: Present and Future
RDO Integrated Controls Lunch
Block 2: On-Hill Building
Groomer Technology Roundtable
Afternoon Break
Terrain Park Litigation: Part II
Progression Session
Prinoth Dinner & Annual Trip to Windells

WEDNESDAY, MAY 15

7:30 a.m. - 8:30 a.m.
8:00 a.m. - 12:00 p.m.
8:30 a.m. - 9:45 a.m.
9:45 a.m. - 10:15 a.m.
10:15 a.m. - 10:45 a.m.
10:45 a.m. - 12:00 p.m.
12:00 p.m. - 1:00 p.m.
12:45 p.m. - 4:45 p.m.
1:00 p.m. - 2:30 p.m.
2:30 p.m. - 3:30 p.m.
3:30 p.m. - 3:45 p.m.
3:45 p.m. - 5:00 p.m.
6:00 p.m. - 11:00 p.m.

Breakfast
Block 3: On-Hill Building
Jump Measurement/ASTM Update
Two presentation briefs: Jump and Event Course Design
Morning Break
Jib Factory
Arena Snowparks Lunch
Block 4: On-Hill Building
Breakout PODs
Building Better Grooming Teams
Afternoon Break
Manager & Crew Roundtables
PistenBully Dinner & Casino Night

THURSDAY, MAY 16

7:30 a.m. - 8:30 a.m.
8:00 a.m. - 12:00 p.m.
8:45 a.m. - 10:00 a.m.
10:00 a.m. - 10:30 a.m.
10:30 a.m. - 12:00 p.m.
12:00 p.m. - 1:00 p.m.
12:45 p.m. - 4:45 p.m.
1:00 p.m. - 3:00 p.m.
5:30 p.m. - 10:00 p.m.

Breakfast
Block 5: On-Hill Building
The New Landscape of Terrain Feature Design
Morning Break
Breakout PODs
HKD Snowmakers Lunch
Block 6: On-Hill Building
Free Ski/Ride
Leica Geosystems Final Night Awards Dinner and Slideshow

FRIDAY, MAY 17

7:30 a.m. - 9:00 a.m.
9:00 a.m. - 3:00 p.m.

Final Breakfast
Free Ski/Ride

ATTENDEES



49 DEGREES NORTH, WA

Darcy Body, Grooming Supervisor

ALTA, UT

Alex Radandt, Operator

APEX MOUNTAIN RESORT, BC

Jaxon Rich, Groomer

Ryan Brunton, Groomer/Mechanic

APPALACHIAN SKI MOUNTAIN, NC

Jacob Ellison, Groomer

ARIZONA SNOWBOWL, AZ

John Nichols, Mountain Operations Mgr.

BEAR CREEK MOUNTAIN RESORT, PA

Aidan Bulwicz, Terrain Park

Chadd Force, Terrain Park

Brad Heintzman, Slopes & Trails Mgr.

Chris Jost, Snowmaking Supervisor

BIG SKY RESORT, MT

Matt Rolfson, Park Attendant

Alex Syversen, Park Attendant

BLUE MOUNTAIN RESORT, ON

Mike Towers, Terrain Park Manager

BOGUS BASIN, ID

Corey McDonald, Terrain Park Director

Austin Smith, Marketing

BOYNE HIGHLANDS RESORT, MI

Trey Schorfhaar, Terrain Park Manager

BOYNE MOUNTAIN, MI

Lucas Patrick, Terrain Park Operator

BRIGHTON SKI RESORT, UT

Alden Gile, Groomer

Chad Joice, Park Manager

Dave King, Groomer

BRUNDAGE MOUNTAIN RESORT, ID

Angela Staup, Terrain Park Manager

CAMELBACK RESORT, PA

Kyle Freeman, Terrain Park Manager

Jake Haab, Lead Groomer

CASCADE MOUNTAIN, WI

Zack Antonie, Park Manager

CORONET PEAK, NZ

Chris Walker, Slopes Manager

DISCOVERY SKI AREA, MT

Jordan Lanahan, Park Operations

FRISCO ADVENTURE PARK, CO

Jesse Risch, Operations Manager

GLEN EDEN, ON

Cory Patten, Recreation Ops Coordinator

Wesley Magdistch, Recreation Ops Lead

Cam McMaster, Recreation Ops Lead

GRAND TARGHEE RESORT, WY

Brokton Miller, Terrain Park Attendant

GROUSE MOUNTAIN, BC

Marcus Cartwright, Terrain Park Manager

Brendan Poot, Park Groomer

HOMewood, CA

Dan Blood, Assistant Mountain Manager



ATTENDEES

JACKSON HOLE MOUNTAIN RESORT, WY

Glenn Worth, Park Groomer

JAY PEAK RESORT, VT

Kirk Borodaeff, Terrain Park Manager

Larry Mundhenk, Terrain Park Supervisor

LIBERTY MOUNTAIN RESORT, PA

Brian Sherrill, Groomer

LOON MOUNTAIN RESORT, NH

Jack Reid, Day Crew Supervisor

MOUNTAIN HIGH, CA

Scott Speers, Grooming Manager

Rick Van Demark, Terrain Park Manager

MT. ASHLAND, OR

David Dunham, Grooming Supervisor

Parker Gokey, Terrain Park Supervisor

Brian McQueen, Operator

Kevin Schilling, Grooming Supervisor

MT. HOOD MEADOWS, OR

Skyler Hardesty, Slope Groomer

OAK MOUNTAIN, NY

John Ahl, Assistant Mountain Operations

PINE KNOB, MI

Matthew Dunn, Terrain Park Manager

POWDER MOUNTAIN, UT

Justin Powell, Lead Park Builder

Matty Kenoyer, Park Groomer

Brody Gardner, Asst. Terrain Park Mgr.

REVELSTOKE MOUNTAIN RESORT, BC

Sami Kalboussi, Groomer Operator

SILVER MOUNTAIN, ID

Brandon Harrington, Groomer Supervisor

SNOWSHOE MOUNTAIN, WV

Brandon Cline, Terrain Park Manager

STRATTON MOUNTAIN RESORT, VT

Zach Cole, Terrain Park Supervisor

Garret Polhemus, Groomer

SUGARLOAF, ME

Korie DiPace, Park Groomer

Seth Warman, Asst. Snow Surfaces Manager

SUN VALLEY, ID

James Sherrill, Terrain Park Groomer

SUNDANCE, UT

Taylor Monney, Terrain Park Supervisor

SUNLIGHT MOUNTAIN RESORT, CO

Colin Scholz, Terrain Park Manager

TAOS SKI VALLEY, NM

Wesley Giron, Terrain Park Supervisor

TELLURIDE SKI RESORT, CO

Brandon McFadden, Head Builder

Hannah Smith, Terrain Park Manager

THE SUMMIT AT SNOQUALMIE, WA

Erik Baker

Derek Bird, Park Lead

TREBLE CONE, NZ

Pablo Campbell Pauli, Groomer Operator





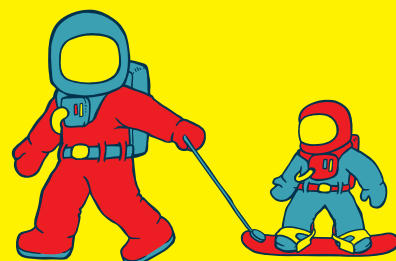
BURTON[®] RIGLET SNOWBOARDING



BUILDING TERRAIN AND PROGRAMS FOR ALL AGES

There are many ways for kids to participate in Riglet Snowboarding—at one of our partner resort's permanent Riglet Parks, indoors using the hover cover, or at one of our free Riglet events.

With a full line of kids' snowboard gear and teaching tools designed to make the learning process easier, Burton Riglet Snowboarding helps get the youngest of kids started.



BURTONRIGLET.COM

MONDAY, MAY 13

10:00 a.m. - 4:00 p.m.	Barlow Room	Attendee Registration
10:00 a.m. - 3:00 p.m.	On-Hill	Free Ski and Ride Campers are welcome to ski and ride Timberline and check out the Timberline parks. Your badge will serve as your lift ticket and get you rental gear.
12:00 p.m. - 4:00 p.m.	Outside Ullman Hall	Grooming Demos Reps from PistenBully, Prinoth, SNOWsat, RDO Integrated Controls, and Leica will be providing demos and answering questions about their latest grooming machines and snow depth management technology.
5:00 p.m. - 6:00 p.m.	Raven's Nest <i>Andy Parry, Pro, Line Skis; Clayton Shoemaker, Big Bear Mountain Resort; Steve Petrie, Arena Snowparks</i>	Fireside Chat by Prinoth How do you use your park as a tool to drive growth at your resort and in the sport? Listen as industry leaders share their experiences using parks and events to fuel stoke for the sport. 
6:00 p.m. - 11:00 p.m.	Barlow Room and Blue Ox Bar	Dinner and Burton Welcome Party Good cheer and cold beer. 

TUESDAY, MAY 14

7:30 a.m. - 8:30 a.m.	Cascade Dining Room	Breakfast
8:00 a.m. - 12:00 p.m.	Ullman Hall Patio	ON-HILL BUILDING BLOCK 1 Campers who are signed up for Block 1, please meet your coach outside Ullman Hall on the patio promptly at 8:00 a.m. You will discuss your on-hill goals for a few minutes before heading out on snow.



CAMP AGENDA

TUESDAY, MAY 14

CAMP AGENDA



8:30 a.m. - 9:30 a.m.

Ullman Hall

*Clayton Shoemaker,
Big Bear Mountain Resort*

Marketing vs. Ops

Connecting the dots between selling the dream and making that dream a reality. How these departments can either make beautiful music together or be at each other's throats. From sponsorships and events to everyday operations, why having a clear understanding of roles and sharing a common goal is key to driving success

9:30 a.m. - 10:30 a.m.

Ullman Hall

Mistica Walker, Safehold Special Risk; Jason Kartchner, MountainGuard; Richard Jolley, Keating, Bucklin & McCormack; Brad Stanford, Farleigh, Wada and Witt; Elia Hamilton, Peak Resorts

Terrain Park Litigation: Part I

Insurance representatives from Safehold Special Risk and MountainGuard, ASDA attorneys, and a park expert will involve campers in breaking down four areas that impact terrain park litigation. Part one will explore design and construction as well as maintenance and supervision. Campers are invited to share ideas and examples of resources used at their resort to mitigate these impacts.

10:30 a.m. - 11:00 a.m.

Morning Break

Morning Break

11:00 a.m. - 12:00 p.m.

Ullman Hall

Josh Nelson, PistenBully; Nick Roma, The Mountain Projects Co.; Rick Hefley, RDO

Groomer Tech: Present and Future

Three different snow grooming technologies will be presented, detailing what they are capable of doing now for your parks and resort—extending seasons, lowering fuel consumption, less demands on snowmaking, fleet management, and more. The three snow depth management system manufacturers will also discuss what's ahead for these technologies, such as assisting park builds both in the planning and the build phases.

12:00 p.m. - 1:00 p.m.

Wy'East Day Lodge

RDO Integrated Controls Lunch



12:45 p.m. - 4:30 p.m.

Ullman Hall Patio

ON-HILL BUILDING: BLOCK 2

Campers who are signed up for Block 2, please meet your coach outside Ullman Hall on the patio promptly at 12:45 p.m. You will discuss your on-hill goals for a few minutes before heading out on snow.

1:00 p.m. - 2:00 p.m.

Ullman Hall

Logan Stewart, Timberline Lodge; Jeremy Cooper, Boyne Resorts

Groomer Technology Roundtable


Technology is changing the way groomers manage snow and how parks are designed and built. Learn how the latest GPS technology plans to eliminate waste and take the guess work out of park planning and building.

2:00 p.m. - 2:15 p.m.

Afternoon Break

Afternoon Break

TUESDAY, MAY 14

2:15 p.m. - 3:30 p.m.	<p>Ullman Hall</p> <p><i>Mistica Walker, Safehold Special Risk; Jason Kartchner, MountainGuard; Richard Jolley, Keating, Bucklin & McCormack; Brad Stanford, Farleigh, Wada and Witt; Elia Hamilton, Peak Resorts</i></p>	<p>Terrain Park Litigation: Part II</p> <p>Insurance representatives from Safehold Special Risk and MountainGuard, ASDA attorneys, and a park expert will involve campers in breaking down four areas that impact terrain park litigation. Part two will explore education and warning as well as investigations. Campers are invited to share ideas and examples of resources used at their resort to mitigate these impacts.</p>
3:30 p.m. - 4:30 p.m.	<p>Ullman Hall</p> <p><i>Shaun Cattenach, Burton Jay Scambio, Loon Mountain Resort</i></p>	<p>Progression Session</p> <p>Your terrain park is a business so having a plan to grow your customer base is essential as it can impact both the traffic in the park and resort traffic overall. Learn about several successful programs that build a progression plan using the principles of fun and a stress-free environment.</p>
5:15 p.m. - 9:00 p.m.	<p>Windells</p> <p>BUSES LEAVE PROMPTLY AT 5:15PM FROM IN FRONT OF THE LODGE.</p>	<p>Prinoth Dinner and Fun at Windells</p> <p>Learn the five D's of dodgeball at our annual pilgrimage to Windells, the funnest place on earth! Skate, BMX, trampoline, and dodge, dip, duck, dive, and dodge in the annual Prinoth Dodgeball Tournament. Do you smell fitness? We do.</p> 

WEDNESDAY, MAY 15

7:30 a.m. - 8:30 a.m.	Cascade Dining Room	Breakfast
8:00 a.m. - 12:00 p.m.	Ullman Hall Patio	<p>ON-HILL BUILDING: BLOCK 3</p> <p>Campers who are signed up for Block 3, please meet your coach outside Ullman Hall on the patio promptly at 8:00 a.m. You will discuss your on-hill goals for a few minutes before heading out on snow.</p>
8:30 a.m. - 9:30 a.m.	<p>Ullman Hall</p> <p><i>Elia Hamilton, Peak Resorts; Jay Scambio, Loon Mountain Resort; Mike Bettera, Effective Edge</i></p>	<p>Jump Measurement Procedures</p> <p>Ever pin the tail on a donkey? What about a terrain park feature? This session walks through measuring a life-size terrain park feature. Attendees will participate in this hands-on workshop to discuss best practices and tools used for jump measurement.</p>
9:30 a.m. - 9:45 a.m.	<p>Ullman Hall</p> <p><i>Elia Hamilton, Peak Resorts</i></p>	<p>ASTM Update</p> <p>Elia Hamilton, sub-chair of the ASTM F2770 committee, shares the latest news and updates on the ASTM standard for jump measurement and terrain park design.</p>



CAMP AGENDA

WEDNESDAY, MAY 15

CAMP AGENDA

9:45 a.m. - 10:00 a.m.

Ullman Hall

*Elia Hamilton,
Peak Resorts*

Practical Jump Design Based on Field Experience

Elia Hamilton leads attendees through a look at jump measurement commonalities and the decline of terrain park specific catastrophic injuries over the last 10 years.

10:00 a.m. - 10:15 a.m.

Ullman Hall

*Mike Bettera,
Effective Edge*

Changing Dynamics of Pipe and Slope Design

Mike Bettera will present a brief on how big-event freestyle terrain design influences the feature and course offerings at ski area terrain parks.

10:15 a.m. - 10:45 a.m.

Morning Break

Morning Break

10:45 a.m. - 12:00 p.m.

Ullman Hall

*Steve Petrie,
Arena Snowparks;
Jeremy Cooper,
Boyne Resorts*

Jib Factory

Rails, jibs, boxes and everything in between. Do you fabricate in-house or contract out? Takeaways include a preferred materials list and year-round maintenance check list. Plus, tips on transporting, setting, ramping, and placement.

12:00 p.m. - 1:00 p.m.

Raven's Nest

Arena Snowparks Lunch



12:45 p.m. - 4:45 p.m.

Ullman Hall Patio

ON-HILL BUILDING: BLOCK 4

Campers who are signed up for Block 4, please meet your coach outside Ullman Hall on the patio promptly at 12:45 p.m. You will discuss your on-hill goals for a few minutes before heading out on snow.

1:00 p.m. - 2:30 p.m.

Ullman Hall

Breakout PODS

The topics below will be arranged in small breakout pods led by industry leaders. Campers choose topics of interest and get answers to their burning questions. Lightning-round format ensures that campers get a chance to hit several of the pod discussions.

FAMILY FRIENDLY PARKS

Signage, guest education, feature flow, and everything in between. What does it take to create a family-friendly park?

DOCUMENTATION AND LOGS

Best practices in documentation during daily operations. Compare levels of techniques, tools, and innovations for park documentation.

SOCIAL MEDIA

Best practices for using social media to support your park and the resort. Discussions include branding, voice, tips and techniques, and working with marketing.

MULTI-USE FEATURES AND PARK FLOW

Historically, park design has been linear, guiding the rider down a specific line. With the advent of multi-use features and flow parks, what do builders need to consider in terms of risk management, design, grooming, and flow?

GROOMER TECHNOLOGY

Advances in technology are changing the way terrain parks are built, groomed, and managed. It gives operators and managers more accuracy, accountability, and efficiency. Take a close look at the technologies and tools available.

BREAKOUT PODS



WEDNESDAY, MAY 15

2:30 p.m. - 3:30 p.m.	<p>Ullman Hall</p> <p><i>Elia Hamilton, Peak Resorts; Ken Gaitor, Snowshoe; Kevin Laverty, Effective Edge</i></p>	<p>Building Better Grooming Teams</p> <p>Finding, training, and managing a grooming crew is an industry-wide challenge. Elia Hamilton, Peak Resorts; Ken Gaitor, Snowshoe; and Kevin Laverty, Effective Edge, will share and discuss three frameworks for building up your grooming team.</p>
3:30 p.m. - 3:45 p.m.	Afternoon Break	Afternoon Break
3:45 p.m. - 5:00 p.m.	<p>Ullman Hall & Raven's Nest</p> <p><i>Ken Gaitor, Snowshoe; Benny McGinnis, Mount Snow; Jeremy Cooper, Boyne Resorts</i></p>	<p>Terrain Park Manager and Crew Roundtables</p> <p>Come prepared to share with the group in these facilitated, but informal, discussions. Park Managers will meet in Raven's Nest and Park Crew will meet in Ullman Hall.</p>
6:00 p.m. - 11:00 p.m.	Wy'East Day Lodge	<p>PistenBully Dinner & Casino Night</p> <p>Winner! Winner! PistenBully Dinner! Can you hang with PB at the tables and on the slopes? Show us what you got at the annual PistenBully dinner.</p> 

THURSDAY, MAY 16

7:30 a.m. - 8:30 a.m.	Cascade Dining Room	Breakfast
8:00 a.m. - 12:00 p.m.	Ullman Hall Patio	<p>ON-HILL BUILDING: BLOCK 5</p> <p>Campers who are signed up for Block 5, please meet your coach outside Ullman Hall on the patio promptly at 8:00 a.m. You will discuss your on-hill goals for a few minutes before heading out on snow.</p>
8:45 a.m. - 10:00 a.m.	<p>Ullman Hall</p> <p><i>Mike Bettera, Effective Edge; Kevin Laverty, Effective Edge; Jeremy Cooper, Boyne Resorts</i></p>	<p>The New Landscape of Terrain Feature Design</p> <p>Since the beginning, freestyle terrain has evolved and been refined through progression, failure, and breakthroughs. The creative spark that influenced parks in the beginning is now pushing the limits of event designs, and parks are benefitting. This innovation, coupled with innovations in equipment, has allowed for new ideas and opportunities to create freestyle offerings for all user levels and support the continued growth of our industry.</p>



CAMP AGENDA

CAMP AGENDA



THURSDAY, MAY 16

10:00 a.m. - 10:30 a.m.	Morning Break	Morning Break
10:30 a.m. - 12:00 p.m.	Ullman Hall	Breakout PODS The topics below will be arranged in small breakout pods led by industry leaders. Campers choose topics of interest and get answers to their burning questions. Lightning-round format ensures that campers get a chance to hit several of the pod discussions.

COMMUNICATION

Best practices for talking the talk and communicating with management and your team.

VEHICLE MAINTENANCE

What are the most important things to know to get the most from your machines? What are the stresses and forces to avoid? What is recommended for a daily walk-around routine for park operators?

SNOW SCIENCE & SNOWMAKING IN THE PARK

Terrain parks use the most snowmaking on the mountain. Learn how to plan and communicate your needs and maximize what you've got.



DESIGN & CONSTRUCTION

Take-offs and landings. Spacing and flow. Pipes and walls. Working the snow for consistency and longevity. How to begin (the set-up) and how to finish your feature.

EVENTS & PARTNERSHIPS

Whether it's a small, local contest or a full-scale competition, planning and preparation are key to success. Marketing and event specialists will share ideas on how to facilitate events of all sizes.

BREAKOUT PODS

12:00 p.m. - 1:00 p.m.	Ullman Hall Patio	HKD Snowmakers Lunch 
12:45 p.m. - 4:45 p.m.	Ullman Hall Patio	ON-HILL BUILDING: BLOCK 6 Campers who are signed up for Block 6, please meet your coach outside Ullman Hall on the patio promptly at 12:45 p.m. You will discuss your on-hill goals for a few minutes before heading out on snow.
1:00 p.m. - 3:00 p.m.	On Hill	Free Ski/Ride
5:30 p.m. - 10:00 p.m.	Ullman Hall	Leica Geosystems Final Night Dinner Leica will treat us to a feast as we reflect on the week. We present our camp awards and the annual Cutter's Camp Education Grant presented by Safehold Special Risk. 

FRIDAY, MAY 17

7:30 a.m. - 9:00 a.m.	Cascade Dining Room	Breakfast
9:00 a.m. - 3:00 p.m.	On Hill	Free Ski/Ride

Snow depth expertise: RDO does that.



RDO Integrated Controls is one of the largest Topcon Survey distributors in the world. With a variety of survey, UAV, mapping, and modeling services required for high precision RTK GPS snow depth.



Contact Rick Hefley for more information.

Rick Hefley
720-534-8769
rhefley@rdoic.com





Michael L. Bettera | Effective Edge

Michael is the owner of Effective Edge, formed from Snow Park Technologies just over one year ago. He has worked closely with resort partners across the U.S. to keep them current with regard to industry trends, as well as through the creation of new, innovative projects, and terrain park risk management for the past two decades. His specialty is signature resort projects and programs, including the public Peace Park at Killington and Boreal, The Streets at Seven Springs, Global Burton Stash parks, and Adventure Slopes. He has worked with more than 60 resorts around the globe, is a former head coach at Waterville Valley, N.H., and has served as a judge at events including the Burton U.S. Open. His career in the resort industry started in 1988 as one of the early snowboard instructors and a member of PSIA.

mike@effectiveedge.com

Shaun Cattnach | Burton Snowboards

Shaun Cattnach has been working in the industry for over 25 years and is the Global Resorts Manager at Burton Snowboards. With a background in instruction and rental operations along with developing freestyle terrain, Shaun's knowledge and experience in growing the sport runs deep. One of his recent endeavors was at Interski in Pamporovo, Bulgaria where he showcased how to utilize Riglet parks and freestyle terrain as a tool for teaching kids how to snowboard. Projects that Shaun has been involved with include the ASTM Freestyle Taskforce, creation of the Smart Style terrain safety program, the AASI/PSIA Freestyle Manual, creation of the Burton Academy at Northstar and the Burton Stash parks.

shaunc@burton.com

Zach Collins | Prinoth

Zach grew up on the East Coast and began skiing in '88. His passion for the sport only grew when he started grooming parks in 2005. He has worked for Copper, Colo., Timberline, Ore., and Beaver Creek, Colo., as well as resorts in South America and Europe. He joined Prinoth three years ago as a park specialist.

zach.collins@prinoth.com

Jeremy Cooper | Boyne Resorts

Jeremy began operating snowcats during the winter of 1998-99 at Vail Resort in Vail, Colo. In 2002, he joined the Mammoth Mountain terrain park program as a feature fabricator and shift supervisor/builder and was there until 2005 when he was promoted to Terrain Park and Marketing Manager at June Mountain. Jeremy took over terrain park operations and action sports marketing for Park City in 2009. Most recently he worked for Snowbasin Resort in the mountain operations department before being hired by Boyne Resorts as the Director of Mountain Sports Development. He has been part of SuperPark, Ms. Superpark, Launch, Grand Prix events, Grenade Games, and the first Holy Bowly in the U.S.

jeremy.cooper@boyneresorts.com

David Deeter | Leica Geosystems

David Deeter is a product support engineer for Leica Geosystems' part of Hexagon, primarily alpine and construction support for Leica dealers in the Western USA. Previously, David worked as product support for a large construction and agricultural dealer, and has over 10 years experience in the industry. He graduated from Walla Walla Community College with an associates in science. In his free time David enjoys golfing, snowboarding, and spending time with his family.

david.deeter@leicaus.com

Kurt Eppler | Prinoth

Kurt has been operating snowcats since 1992. He was the slope operations manager for Angel Fire in New Mexico from 1993-2004. He operated winch cats for the Downhill and Super G events at the 2002 Winter Olympics in Salt Lake. Kurt was an operator for Snow Park Technologies from 2004-2016 and has been with Prinoth since 2017 as a demo operator and trainer.

kurt.eppler@prinoth.com

James Fields | RDO Integrated Controls

James Fields is the technology manager for RDO Integrated Controls. James has a background as a river guide, snowboarder, outdoors guy and surveyor extraordinaire. He thinks he can weld but is more at home with GPS and radio technology. James has an extensive background in mining, construction, landfills and the ski industry with high precision machine control. When it comes to GPS, radio, cell, survey, and modelling, James will work 'til your problems are solved. All he needs is coffee...

jfields@rdoic.com

Ben Finn | Prinoth

Ben likes to do things in threes. He spent three years as a pipe cutter for Waterville Valley, N.H., three years as the park grooming supervisor and pipe cutter for Squaw Valley / Alpine Meadows, Calif., and three years as the lead park builder for Snowbasin, Utah. He spent six years down under at Perisher, Australia. He has been with Prinoth for three years as a snow-grooming specialist.

ben.finn@prinoth.com

Ken Gaitor | Snowshoe

Ken grew up playing on the mountains of West Virginia and started skating everything he could in 1985. In '97, he became Brighton's park manager, working there for six years. In '03, he became Mount Snow's freestyle terrain manager until 2009. In 2010, Ken returned to wild and wonderful West Virginia to become Snowshoe's director of operations. In this role he oversees terrain parks, mountain operations, mountain planning, and facial hair.

kgaitor@snowshoemountain.com



PANELISTS & COACHES

Jim Grewe | Peterson Equipment

Jim is part of the team at Peterson Equipment Company, selling PistenBully products throughout the Intermountain West. He got his start as an operator at Beaver Mountain Ski Area, and went on to be a mechanic at PEC. After graduating from Utah State University, he joined the sales team at Peterson Equipment. Today he leads a dynamic team at PEC. What is his favorite part of the job? Buying beers and passing out high fives.
jgrewe@petersonequipment.com

Colin Hales | PistenBully

Colin Hales is the Pacific Northwest Regional Manager for PistenBully supporting National Product & Business Development. He started his career in the snowsports industry at Snowbird, Utah in the late '90s. In 2000, he joined Bombardier as Regional Service Manager. He has been with PistenBully since 2009.
chales@pistenbullyusa.com

Elia Hamilton | Peak Resorts

Elia began building jumps for his Tonka trucks as early as he can remember. He was kicked off the school ski team in '92 for skipping practice to build jumps, and started building professionally at Mount Snow in 1998. Elia became the director of freestyle terrain for American Skiing Company in 2003, and in 2005 became the mountain manager at Mount Snow. Elia was appointed director of freestyle terrain for Peak Resorts in 2011, and is now VP of terrain development. He's a cat person and loves riding motorcycles in autumn.
ehamilton@peakresorts.com

Rick Hefley | RDO Integrated Controls

Rick Hefley is the national ski industry director for RDO Integrated Controls. Rick grew up in a military family traveling and ultimately working in the ski industry throughout Europe and the Western U.S. With a background in software development, GIS, asset management and general equipment sales, Rick brings his collective experience to his customer engagements. Clients appreciate how he listens to their concerns and offers thoughtful solutions. Although James says his welds are "bubble gum," Rick will be instrumental in putting together your resort's grooming management solution.
rhefley@rdoic.com

Todd Hermesen | Leica Geosystems

Todd Hermesen is the U.S. technical lead for Leica Geosystems Machine Control Division. Todd has been employed in the industry for eleven years. For the last eight years, he has worked with machine guidance systems for Leica. Todd is dedicated to partnering with clients to maximize productivity by implementing cutting edge positioning technologies.
todd.hermesen@leicausa.com

Ricky Hower | Timberline

The marketing manager every park crew wishes they had: Someone who has done it. Like Drake, Ricky started at the bottom cleaning toilets at Timberline. The one-time park digger then worked his way up to marketing manager. Ricky has a deep knowledge of the ski industry, covering both ski resorts and the "industry side" in his time as Airblaster's Regular Guy.
rhower@timberlinelodge.com

Richard Jolley | Keating, Bucklin & McCormack

Richard is a partner with Keating, Bucklin and McCormack in Seattle and has been representing the ski industry and outdoor professionals for over a decade. He is a tele-commuter that splits time between his home in Jackson, Wyo., and back in the Pacific Northwest representing his clients. He is passionate about skiing and other outdoor pursuits such as mountain biking and climbing. He will occasionally take features in a terrain park but only when nobody is looking other than his wife.
rjolley@kblawyers.com

Jason Kartchner | MountainGuard

Jason joined MountainGuard in 2016 as a claims and loss control specialist. He handles claims, manages litigation, and conducts site inspections and on-site trainings. He began his ski industry career in 1996, skiing during the day and cleaning the lodge at night. He eventually moved up and worked on ski patrol and as a risk manager. He received his J.D. and M.B.A. from the University of Montana in 2012. And was the risk manager and corporate counsel for a Pacific Northwest petroleum distributor for several years before returning to the ski industry. When he's not skiing, Jason enjoys spending time with his wife and son outdoors.
jason.kartchner@amwins.com

Steve Kruse | Timberline

Steve Kruse is the GM of Mountain Operations at Timberline. He's been at Timberline since the guy in the picture was keeping Californian highways safe. You won't see him but he is everywhere. He is currently working on opening Timberline's new mountain bike park. Ask him about it.
skruse@timberlinelodge.com



sam
SKI AREA MANAGEMENT





Kevin Laverty | Effective Edge

Kevin grew up in New Jersey riding Mountain Creek. He started working at Heavenly in '06, and then as park crew in summer '07 for New Zealand's Cardrona Alpine Resort. After many back-to-back seasons in New Zealand and Tahoe, he moved to Colorado, where he served as terrain park manager at Keystone and terrain park best practice lead for Vail Resorts. He's worked on projects such as the Burton NZ Open, Junior World Championships Cardrona, Superpark, Ms. Superpark, Dew Tour Street, FIS World Cups, and Winter X Games. He is now a professional consultant for Effective Edge. kevin@effectiveedge.co

Andy Lindsay | PistenBully

Andy has 23 years of grooming experience, and has been able to work around the world including Australia, New Zealand and South Korea. He has been a part of 14 World Cup race course preparations, including Beaver Creek, Killington and South Korea, as well as the preparation for the U.S. ski team training grounds in New Zealand. Andy was the lead winch operator for the 2018 Winter Olympics speed venue in South Korea, including all men and women test events prior to Olympics. alindsay@pistenbully.com

Jesse MacDonald | Timberline

Jesse started his career as a snowboard instructor at Smugglers' Notch, Vt., from 2000-2003. And after many years ripping all suitable hills around on his black snow 135 legend SE (that's special edition for you wondering), Jesse decided to head west from New York in search of the endless winter. His first stop was Mt. Hood Ski Bowl where he became the terrain park manager in 2004 and then the bike park manager as well starting in 2006. In 2012, he moved across the street to Timberline and worked as a grooming operator for three years before becoming the grooming manager in 2015. He and his crew humbly try and hold the flame handed down from pioneers previous, and not catch dysentery along the way. jmacdonald@timberlinelodge.com

Benny McGinnis | Mount Snow

Benny was born and raised in Asheville, N.C. He loved the sunshine so much that he moved to Lake Tahoe in 2002 and began working at Sierra-at-Tahoe. He's been operating snowcats for 16 years, spending most of his time in terrain park design and construction. He was the terrain park department manager at Sierra for three years before moving back east to Mount Snow, where he is the freestyle terrain manager for Carinthia Parks. bmcginnis@mountsnow.com

T.J. Moloney | Mount Hood Meadows

T.J. grew up riding the slopes of Blue Hills and Wachusett. He started his career in the industry in lift ops at Breckenridge after failing to go pro. He has been working in parks since 2002 when he joined the team at Mount Snow and participated in the launch of Carinthia. In 2012, he went westward to Mammoth and worked for parks, snow-making, and mountain biking. He took on the role of terrain park manager at Mount Hood Meadows in 2016 and is determined to bring back the glory of the Mack Dawg era a-la "Upping the Ante." thomas.moloney@skihood.com

Josh Nelson | PistenBully

Josh Nelson has worked for Kässbohrer All-Terrain Vehicles Inc. (PistenBully) for 15 years in multiple roles and territories. Currently the SNOWsat Manager for North America based out of Reno, Nev., Josh has experience working with customers large and small to install, implement and support the SNOWsat system. He believes the employment of new technologies is key to the growth, sustainability and success for the ski industry. jnelson@pistenbullyusa.com

Lucas Ouellette | Arena Snowparks

Lucas is the project manager for Arena Snowparks. He has traveled the world building parks for large-scale events including world championships, big airs, and multiple Olympic Games, he's done it all. He also assists with the design and build of resort terrain parks through ASP Parks. lucas@arenasnowparks.com

Andy Parry | Professional Skier

Andy grew up outside of Rochester, N.Y., and started park skiing when he was 13 at Bristol Mountain. He graduated from Green Mountain College with a degree in Resort and Hospitality Management. After college, Andy wanted to avoid "real life" and started a web series called Line Traveling Circus. After Traveling Circus gained some notoriety, he created an event series named Tell A Friend Tour. TAFT is a grassroots tour that focuses on fun, and creating memories that make life long skiers. He also has two cats, Tiger and Lynx.

Steve Petrie | Arena Snowparks

Steve arrived in Whistler in the early '90s looking for a job that would allow him to snowboard as much as possible. In 1994 he joined Blackcomb Mountain as a groomer—that also happened to be the first year the mountain was building a terrain park. After 11 years of working back-to-back winters and summers, he founded Arena Snowparks in 2004. Since then, the ASP team has traveled the world, building terrain parks, half pipes, snowcrosses, and events, including multiple Winter Olympic Games. steve@arenasnowparks.com

sam
SKI AREA MANAGEMENT





PANELISTS & COACHES

Nick Roma | The Mountain Projects Co.

Nick has been on snow since he was 22 months old. He began his career at Sunday River in 2002, and was terrain park manager there from 2005-2009. In 2009, he moved west to become the terrain park manager at Steamboat Resort, Colo. Since 2012, Nick has been dedicated to the Ski and Snowboard Cross World Cup Tour, designing and building—and participating in—more than 45 different international venues. He's a three-time Olympic builder, two-time World Championships builder, and has built 30+ World Cup venues. Nick launched a new adventure in 2018 called The Mountain Projects Company, dedicated to designing, building and growing ski resorts digital profile, from snowmaking management to event and terrain park construction. Giving ski resorts the information needed to be as efficient as possible while managing all four seasons of resort operations. His dreamy blue eyes are huge selling point. nick@themountainprojectscsco.com

David Rowlett | Leica Geosystems

David is a 20-year veteran of the U.S. Coast Guard where he managed search and rescue and law enforcement operations over 12,000 square miles of southeast Alaska. After retiring in 2001, he has spent the past 15 years in the construction, surveying, and engineering industries and has been working with Leica products since 2006. David is currently the U.S. National Machine Control Division Manager at Leica Geosystems. david.rowlett@leicaus.com

Jim Sanco | BlackStrap

Jim Sanco was born and raised in the Pacific Northwest. He is the Brand and Media Manager for BlackStrap Industries where he oversees product design, brand relations, events, and collaborative efforts including the BlackStrap Park Crew Project. The Parks Project works directly with crews to support grassroots events, developing and testing products, and cultivates collaborative media content. jim@bsbrand.com

Dwayne Sawyer | Leica Geosystems

Dwayne Sawyer is a Regional Support Engineer for Leica Geosystems in the Heavy Construction Segment. He has been employed with Leica for over 2 years. He has over 20 years experience as a land surveyor, performing all aspects of surveying from construction layout to boundary surveys. During that time he has spent close to 13 years building machine control models and supporting contractors using GPS. Along with that specialty, he has 8 years utilizing and processing static and mobile lidar instruments and data. Dwayne is proficient in several different CAD softwares, including Civil3D, Microstation, and Topodot. dwayne.sawyer@leicaus.com

Jay Scambio | Loon Mountain Resort

Jay has been working in the ski industry for 20 years, starting as a snowboard instructor at Loon Mountain Resort in New Hampshire, then moving on to managing its world-class terrain park program. He most recently oversaw all terrain parks, snowsports, and adventure sport operations as the Director of Mountain Sport Development for Boyne Resorts before taking the reigns at Loon Mountain as president and general manager. He is an active member in NSAA working to improve terrain park, snowsports, and mountain bike operations at resorts nationwide. Jay was a mentor for the 2018 SAM Summit Series. He likes the quiet life and lives so deep in the woods his dogs need to wear bear bells. jscambio@loonmtn.com

Ryan Seelye | PistenBully

Ryan is currently in the position of Procurement Supervisor and Sales Support for KATV. Ryan's previous experience was as Regional Sales Representative for PistenBully in the Sierra Branch and before that a Snow Cat Operator and Snowmaking Supervisor for Diamond Peak Ski Resort, Homewood Mountain Resort, and in the east at Labrador Mountain. rseelye@pistenbullyusa.com

Clayton Shoemaker | Big Bear Mountain Resort

Clayton is the marketing director for Big Bear Mountain Resort. He started his career in the industry in 1999 developing the park for Mount Shasta Ski Park. He joined Big Bear in 2001 and was an integral part of the development of the Bear park program. He was promoted to director of park development and youth marketing in 2008 and became the marketing director for the resort in 2015. cshoemaker@bbmr.com

Chauncey Sorenson | PistenBully

Chauncey Sorenson started in parks in seventh grade, sitting in the passenger seat of a PB240 in Juneau, Alaska at Eaglecrest. After high school, the Big Mountain (Whitefish Mountain Resort) was the starting point to cat operating and building park for a couple years. Then he took a break to focus on his snowboard career for a few years, which took him to parks all over the country. He later moved back to Juneau, built and managed the terrain park as well as the grooming, after which he managed SEABA Heli's Cat Ski operation in Haines, Alaska for 3 years. He is now located in Portland, Ore., as the Northwest Service Supervisor for PistenBully, where he still gets on his snowboard every second he can with all his vintage snowboards. cosorenson@pistenbullyusa.com



Brad Stanford | Farleigh, Wada and Witt

Brad Stanford focuses his legal practice on general litigation, business litigation, products liability, and insurance defense, with particular expertise in ski area risk management. A recognized leader in ski area defense and recreational product liability defense, Brad is a past president of the Association of Ski Defense Attorneys. He was awarded the 2008 Industrial Strength Award by the Pacific Northwest Ski Areas Association. Brad has been selected to the Oregon Super Lawyers list for 13 straight years (2006-2018). He was also chosen by his peers for inclusion in Best Lawyers in America in the fields of Commercial Litigation, Product Liability Litigation - Defense, and Personal Injury Litigation - defense.
bstanford@fwwlaw.com

Logan Stewart | Timberline

After receiving a degree in Ski Area Management, Logan returned home to Mt. Hood and began working at Timberline. Logan is currently the mountain operations manager for the ski area, which includes oversight of Timberline's world-renowned summer operations and terrain parks. Logan's favorite flower is the rhododendron.
lstewart@timberlinelodge.com

Phillip Van Why | HKD Snowmakers

Phil is a master electrician, gearhead, and HKD Snowmakers' technical guru in the West. Phil can make snow at Breckenridge and Copper Mountain simultaneously, while rewiring a fan gun and helping his oldest son with homework. With four young boys at home, it's conceivable that he has set the world record for the most viewings of "Cars" by any one individual.
phil@hkdsnowmakers.com

Mistica Walker | Safehold Special Risk

A specialty claims adjuster, Mistica focuses on liability, property and auto claims, as well as monitoring workers' compensation. In addition, she provides loss control and risk management support to ski areas. Previously, Mistica worked for 11 years in ski operations, including risk management and legal. Mistica provides a wide range of ski area employee training and is a frequent speaker at workshops and seminars across the country.
mistica.walker@safehold.com

Tyler Wike | Timberline

Tyler is the terrain park manager at Timberline. He started his career working at the neighboring resort, Skibowl. After a couple years working as the night ski shift supervisor, he landed a job on the park staff at Timberline in 2010 and worked as a park attendant before accepting the park supervisor position for another two years. In 2012 he became a freestyle/park groomer and in 2014 Tyler accepted the position as park manager and since then he has managed the Timberline Terrain Parks, enjoying all aspects of terrain parks from raking, training, grooming, building and designing, with help from his day staff employees, and the builders/groomers.
twike@timberlinelodge.com

Tim Yates | Safehold Special Risk

Tim's career in the ski industry began in 1992 as a Stowe Mountain Resort ski patroller. Following 10 years at Stowe, he became a senior claims specialist in a ski industry insurance program, and then a resort risk manager at Northstar-at-Tahoe, Calif. For the last five years, Tim has been a self-employed claims and loss control consultant. In 2016, he joined the Safehold Special Risk team as a specialty claims adjuster.
timothy.yates@safehold.com

The SAM Magazine Staff | Olivia Rowan, Sarah Borodaeff, and Liz Mettler

Sarah, Liz and Olivia all grew up on the east coast, skiing since they could fit in backpacks. In their spare time they ponder questions such as: Can crop circles be square? If you are a bald chef, do you still wear a hairnet? Why does quicksand work slowly? Why are there no B batteries? If all is not lost, where is it?
olivia@saminfo.com / sarah@saminfo.com / liz@saminfo.com

Timberline Park & Grooming Crew

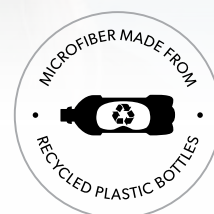
- Cody Trapp
- Danny Shupp
- Jacob Reeths
- Kris Klug
- Corey Caswell
- Marshall Marona
- Zach Maxwell
- John Oboyle





LENS NOT LASTING?

PROTECT YOUR GOGGLES IN STYLE THIS WINTER.



Use when:



gogglesoc™ is a protective microfiber goggle cover made from recycled plastic bottles.
Available at your nearest winter sports retailer.

www.gogglesoc.com


gogglesoc™

CAMP SPONSORS



ARENA SNOWPARKS
www.arenasnowparks.com
 Lucas Ouellette, Project Manager
 Steve Petrie, Owner/President



BLACKSTRAP
www.bsbrand.com
 Jim Sanco, Brand Manager



BURTON SNOWBOARDS
www.burton.com
 Shaun Cattanach,
 Global Resort Director



CAPTUER HEADWEAR
www.captuerheadwear.com



GOGGLESOC
www.gogglesoc.com



HKD SNOWMAKERS
www.hkdsnowmakers.com
 Phil Van Why, Western Sales & Tech



LEICA GEOSYSTEMS
www.leica-geosystems.com
 David Deeter, Project Support Engineer
 Todd Hermsen, Leica Support Engineer
 David Rowlett, U.S. Manager
 Dwayne Sawyer, Regional Support Engineer



PISTENBULLY
www.pistenbully.com
 Jim Grewe, Intermountain Regional Manager
 Colin Hales, Regional Manager
 Andy Lindsay, Pro Academy Trainer
 Josh Nelson, SNOWsat Manager
 Ryan Seeley, Procurement Manager
 Chauncey Sorenson, Service Manager
 Paul VanderGrift, Service Rep
 Matthew Wilcox, Service Rep



PRINOTH
www.prinoth.com
 Zach Collins, Park Specialist
 Kurt Eppler, Trainer
 Ben Finn, Grooming Specialist
 Philippe Gosselin, Marketing
 Conan Moudy, Service Tech
 Walter Piekarz, Regional Sales Manager
 Michael Williams, Regional Sales Manager
 Michel Robert, SnowHow Team Leader
 Jason Smith, Regional Sales Manager
 Kerry White, Service Tech



RDO Integrated Controls
www.rdoic.com
 James Fields, Technology Manager
 Rick Hefley, Ski Industry Director



SAFEHOLD SPECIAL RISK
www.safehold.com
 Mistica Walker, Specialty Claims Adjuster
 Tim Yates, Specialty Claims Adjuster



No resort is quite like yours

Team up with us today.

Rob Andrews, Seattle, WA
360-787-9887
robert.andrews@safehold.com

Bill Curtis, Lakewood, CO
720-543-8066
william.curtis@safehold.com

Ryan Patrick, Portsmouth, NH
603-570-5218
ryan.patrick@safehold.com

No insurance program delivers solutions quite like ours. We recognize that your business faces a unique set of risks every day. Our sports and recreation teams can help you assess and minimize those risks so you can focus on running your business.

We proactively consult with you to build the right insurance solutions — so you can feel confident that you have the right coverage in place to protect your business now and for the long term.

Products and services are offered through Safehold Special Risk, Inc., dba Safehold Special Risk & Insurance Services, Inc. in California. Coverage is provided by unaffiliated insurance companies.

© 2018 Safehold Special Risk, Inc. All rights reserved.

HIKID

SNOWMAKERS



CAPTUER

HEADWEAR



Quality Custom Headwear

AT **CAPTUER** WE BUILD CUSTOM HEADWEAR FOR YOUR BRAND.

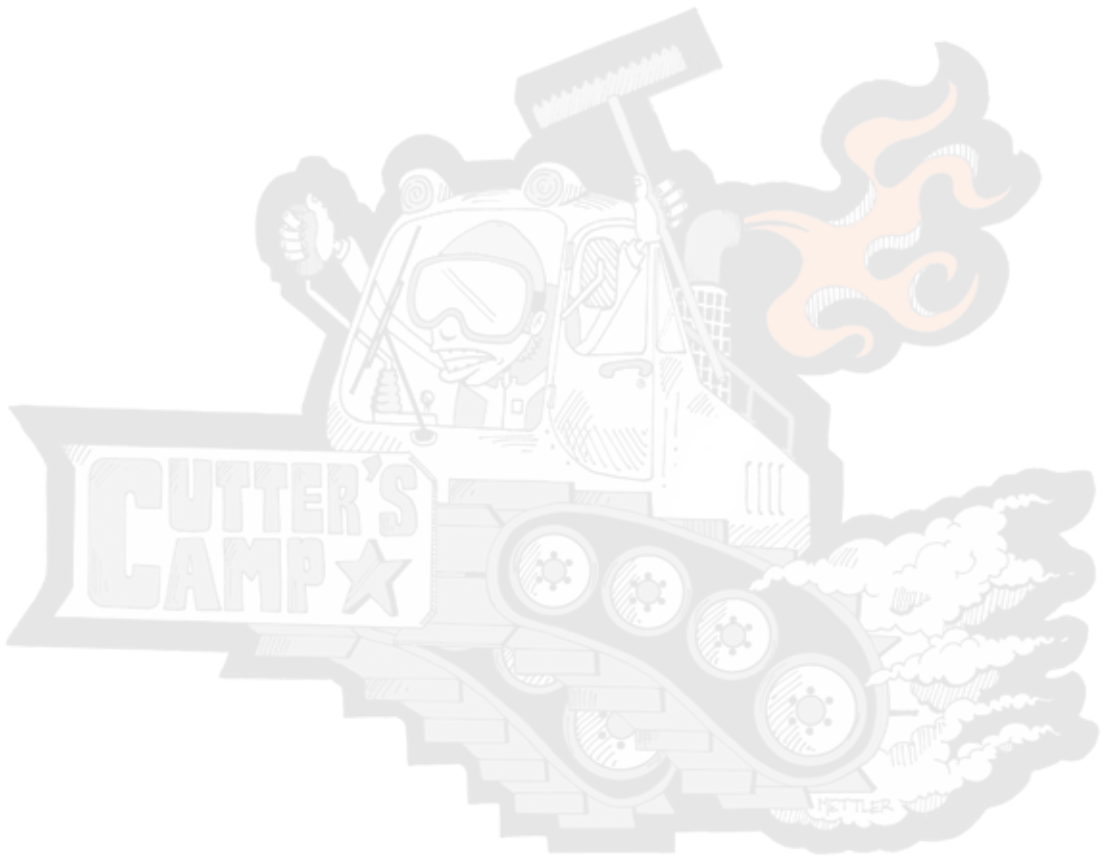
FOCUSED ON CREATING QUALITY, ON TREND, CUSTOM DESIGNED PIECES WITH FAST TURNAROUND AND UNBEATABLE MINIMUMS.

WE BELIEVE SIZE SHOULDN'T LIMIT CREATIVITY. FOUNDED BY SMALL BUSINESS OWNERS, TO PROVIDE NEXT LEVEL HEADWEAR TO THE TREND CRUSHING, DIY, STYLE DRIVING DESIGNERS, ARTISTS, & BRANDS.

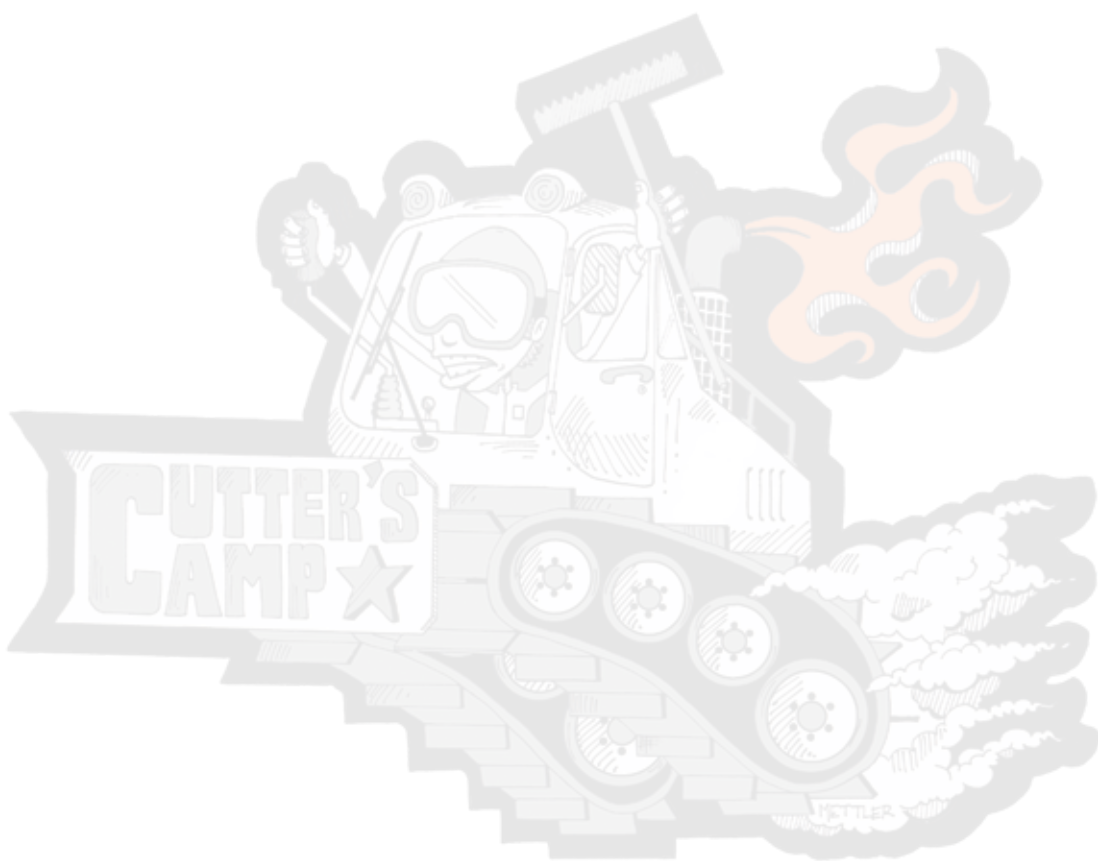
////////////////////

HOLLER || @CAPTUER // WWW.CAPTUERHEADWEAR.COM

NOTES



NOTES



GAME CHANGER

Leica iCON Alpine

Get the most out of your slopes, and
delight winter sports enthusiasts.



3 Point Blade

3D View

Log Points



THE BLACKSTRAP PARKS PROJECT PROUDLY OUTFITS MORE THAN 500 PARK CREW MEMBERS ACROSS NORTH AMERICA EVERY SEASON. WORKING DIRECTLY WITH MANAGERS TO SUPPORT PARK SPECIFIC EVENTS, CULTIVATE MEDIA CONTENT & PROVIDE PRODUCT R&D FEEDBACK.

2018/19 PARK CREW PARTNERS



LEARN MORE ABOUT THE BLACKSTRAP PARKS PROJECT AT REGISTRATION!

PROUD CUTTER'S CAMP PARTNER

50 YEARS PISTENBULLY



*Dear Campers,
2019 is a very special year for PistenBully.
On the occasion of our 50th anniversary, we would like
to extend our appreciation for the friendships with you
we have developed through the years.
You can count on us going forward!*

www.pistenbullyusa.com