



Twenty years ago Joseph Scontrino founded Landcraft Homes on the belief that it really is possible to build a spectacular, high-quality home in a desirable neighborhood, without breaking the bank. Landcraft's dedication to quality and commitment to detail has made Landcraft the largest residential builder in the River Parishes and the second largest in the state, starting over 100 homes in 2009 and 2010. We've worked hard to earn a reputation of trust and superior craftsmanship...it is a reputation that is apparent in every home we build, and in every customer we serve. Landcraft developments are located throughout the River Region of St. Charles, St. John, and St. James Parishes and we currently have homes under construction in Lakeview and Old Metairie.

Landcraft has brought our philosophy and experience to the New Orleans area by offering all clients a streamlined **"One-Closing Solution"** to building and financing their dream home:

- 1. Choose your floor plan & elevation from our library of flexible plans*
- 2. Choose your colors, flooring, granite, hardware, lighting and trim*
- 3. Submit a **5%** non-refundable deposit*
- 4. Landcraft **BUYS** the lot of your choice or builds on your lot*
- 5. Landcraft **PAYS** for the construction of your home*
- 6. Secure a home mortgage with your lender*

Our **"One-Closing Solution"** *saves you thousands of dollars* in interest and closing costs because we eliminate the financial burden of land acquisition and a construction loan.

Please contact me for more information and I look forward to working with you soon.





Drive by these quality homes that Landcraft has recently built:

Lakeview:

6146 Louisville St.
The "Louisville"

6480 Louisville St.
The "Laneville"

6724 Louisville St.
The "Louisville Regal"

6735 Louis XIV St.
The "Bellaire"

5889 Marcia Ave.
The "Pontchartrain"

222 Stafford St.
The "Vicksburg"

6336 Canal St.
The "St. Charles Regal"

Landcraft Homes Model Home & Sales Office

Old Metairie:

308 East Maple Ridge Dr.
The "St. Charles"

710 Ridgewood Dr.
The "St. Charles"

3/5/2012



Lakeview & Old Metairie

HOME PRICES

| MODEL NAME | LIVING | PORCHES | TOTAL | PRICE |
|---|--------|---------|-------|------------|
| Filmore | 1350 | 200 | 1550 | \$ 187,700 |
| Vicksburg | 1600 | 335 | 1935 | \$ 222,700 |
| Vicksburg Regal | 1750 | 370 | 2120 | \$ 242,700 |
| St.Charles | 1750 | 370 | 2120 | \$ 254,600 |
| * St. Charles Regal | 1895 | 550 | 2445 | \$ 274,600 |
| St. Charles Regal with 2nd Floor Option | 2380 | 385 | 2765 | \$ 292,600 |
| Uptowner | 1800 | 385 | 2185 | \$ 254,600 |
| Pontchartrain | 1800 | 385 | 2185 | \$ 254,600 |
| Louisville | 1850 | 250 | 2100 | \$ 248,600 |
| Louisville Regal | 2150 | 345 | 2495 | \$ 286,700 |
| Laneville | 1965 | 330 | 2295 | \$ 267,600 |
| Bellaire | 2200 | 400 | 2600 | \$ 294,600 |
| Bancroft | 2670 | 210 | 2880 | \$ 357,600 |

For More Detailed Information, Please Contact: Wanda Trosclair 504-416-7473

www.landcrafthomes.com

107 Fairway Drive, LaPlace, La 70068 985-651-3007

* Price does not include the upstairs Bonus Room option.

The above prices do not include lot or other land costs. All information is deemed reliable but not guaranteed. All information is subject to change without notification.





Lakeview & Old Metairie

STANDARD FEATURES

INTERIOR FEATURES

10' ceilings on the first floor
Wood floors in living areas
Ceramic tile in all wet areas - bathrooms, laundry
7" baseboards
Real wood shelving in pantry and all closets
Telephone and cable outlet in living and bedrooms
Raised panel interior doors
Decorator light fixtures
Two ceiling fans - master and living rooms
Recessed lights - per plan
Smoke detectors
Attic stairs (one set)

KITCHEN FEATURES

Granite slab countertops
Stainless steel appliances
30" gas range with electric oven
Microwave/Vent combination
Dishwasher
Disposal
Undermount stainless steel double bowl sink
42" tall custom wood cabinets
Delta Leeland faucet with sprayer and soap dispenser
Waterline for icemaker

BATHROOM FEATURES

Marbella vanity tops with backsplash
Ceramic master shower
Designer Tub
Elongated toilets
8" Delta washerless facets
Plate glass mirrors above vanities
Heater and exhaust fan

EXTERIOR FEATURES

Real wood porches, decks and patios
Gas lantern on the front porch
Brick skirt around entire foundation
Painted 4x8 beaded plywood ceilings
Cement walkways - per plan
Cement parking pad for 2 cars
4x8 sheathing of entire exterior walls
Quality cement fiber board
Fiberglass exterior square columns
Two water faucets (minimum)
Two weatherproof electrical outlets (minimum)

QUALITY CONSTRUCTION

1 year new home warranty
5 year structural warranty
30 year warranted dimensional roof shingles
Stick-built on site - not prefabricated
16" on-center studs, load bearing walls
Kiln dried lumber for framing and decking
12-2 electrical wire
Termite treated sub-soil
Cement paved crawl space

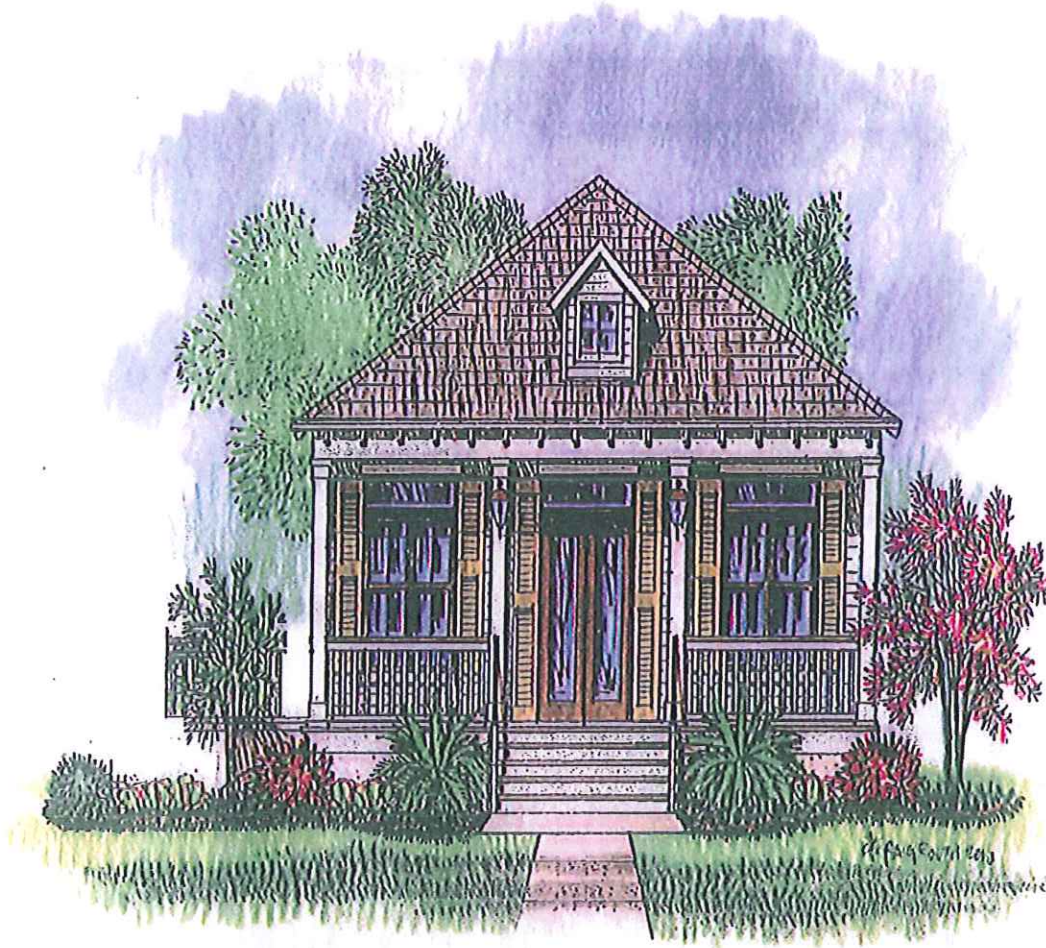
ENERGY EFFICIENCY

High efficiency air conditioner
Polycell foam in all wall penetrations
R-13 rating for exterior walls
Double insulated aluminum windows
High recovery electric water heater (50 gallon)





Filmore



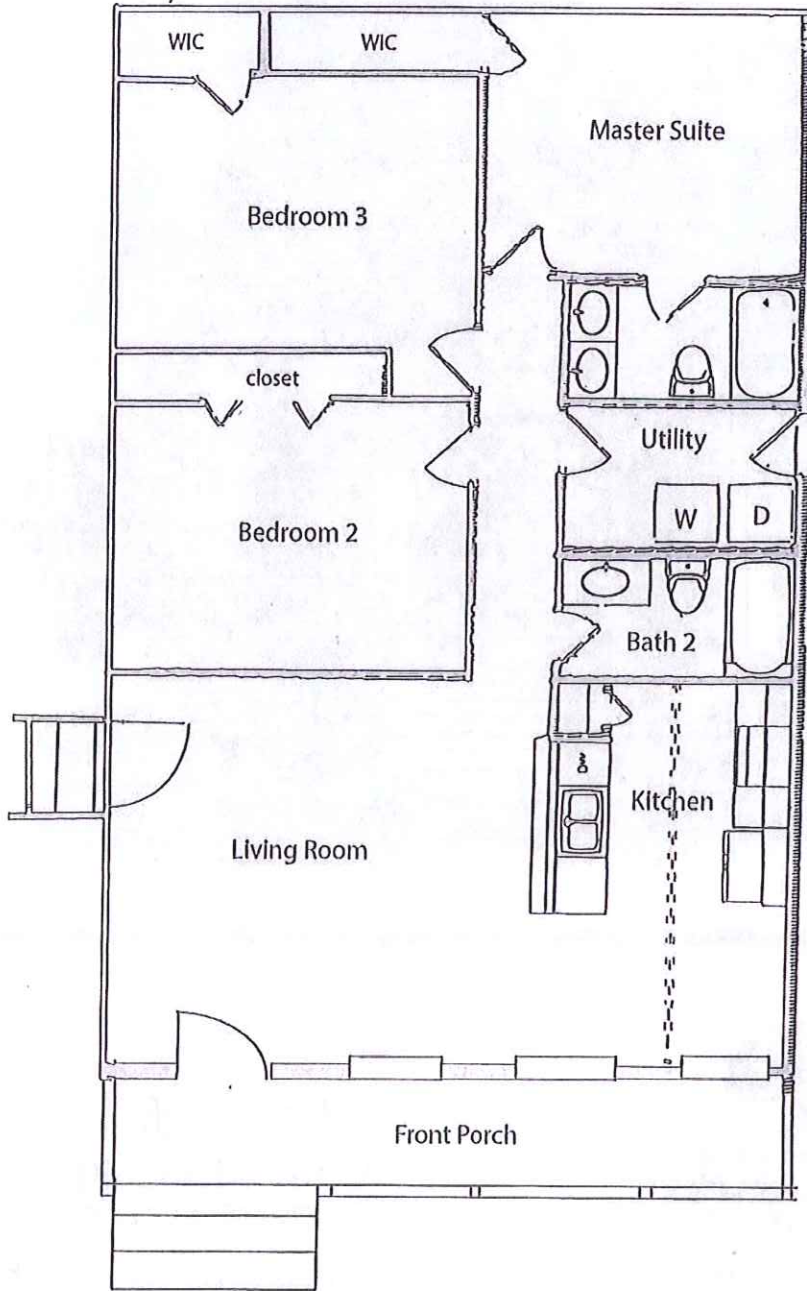
**LANDCRAFT
H O M E S**

www.landcrafthomes.com

(985) 651-3007

Living Sqft. 1350B
Covered area sqft. 200
Total 1550 Sqft.
3 Bedrooms 2 Baths

Filmore



The drawings depicting the outside of these homes may vary slightly. The layouts and sizes indicated on the floor plans are approximate, and may also vary slightly. Specifications, products, and prices are subject to change without notice.



Vicksburg



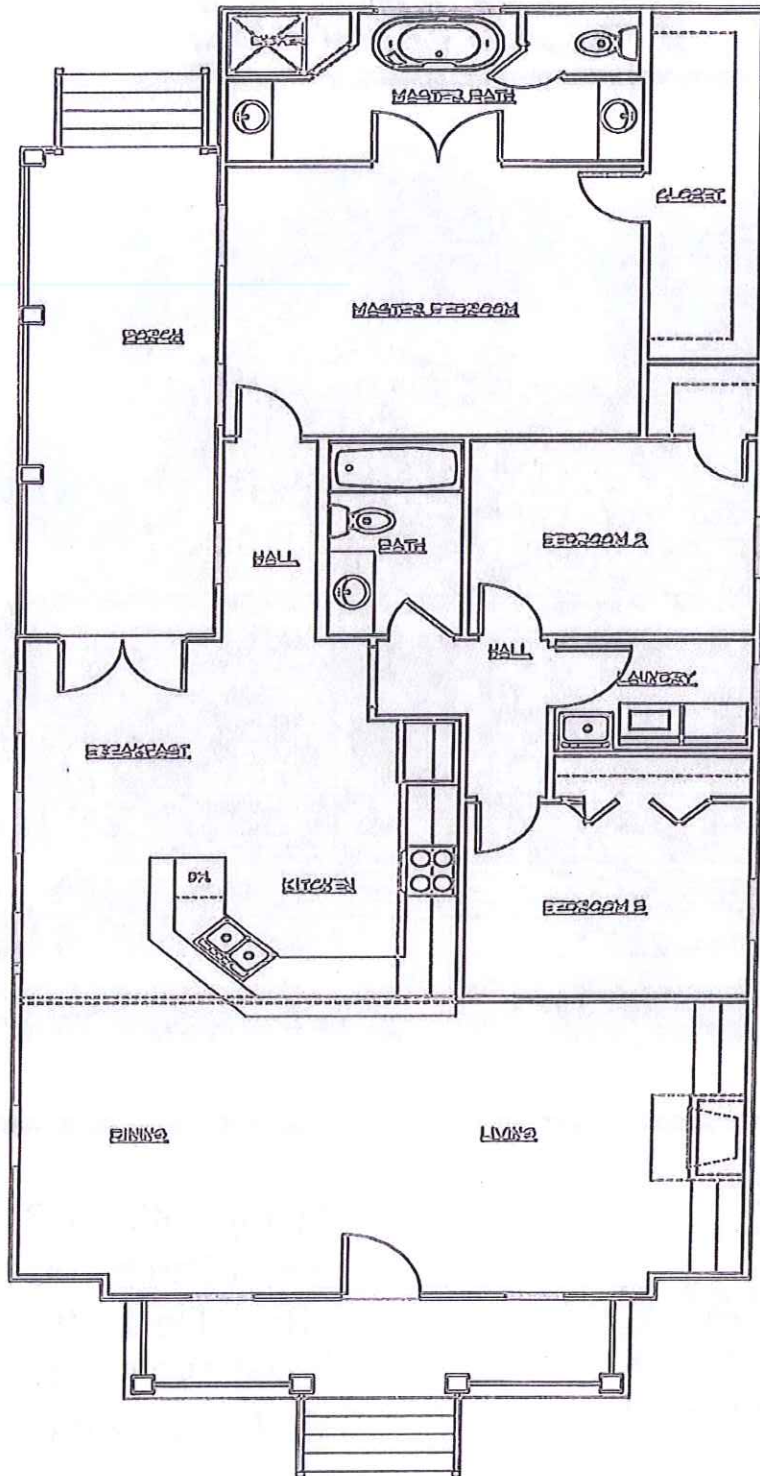
**LANDCRAFT
H O M E S**

www.landcrafthomes.com

: (985) 651-3007

Living Sqft. 1633
Front Porch 100
Back Deck 190
Total 1923 Sqft.
3 Bedrooms 2 Baths

Vicksburg



The drawings depicting the outside of these homes may vary slightly. The layouts and sizes indicated on the floor plans are approximate, and may also vary slightly. Specifications, products, and prices are subject to change without notice.



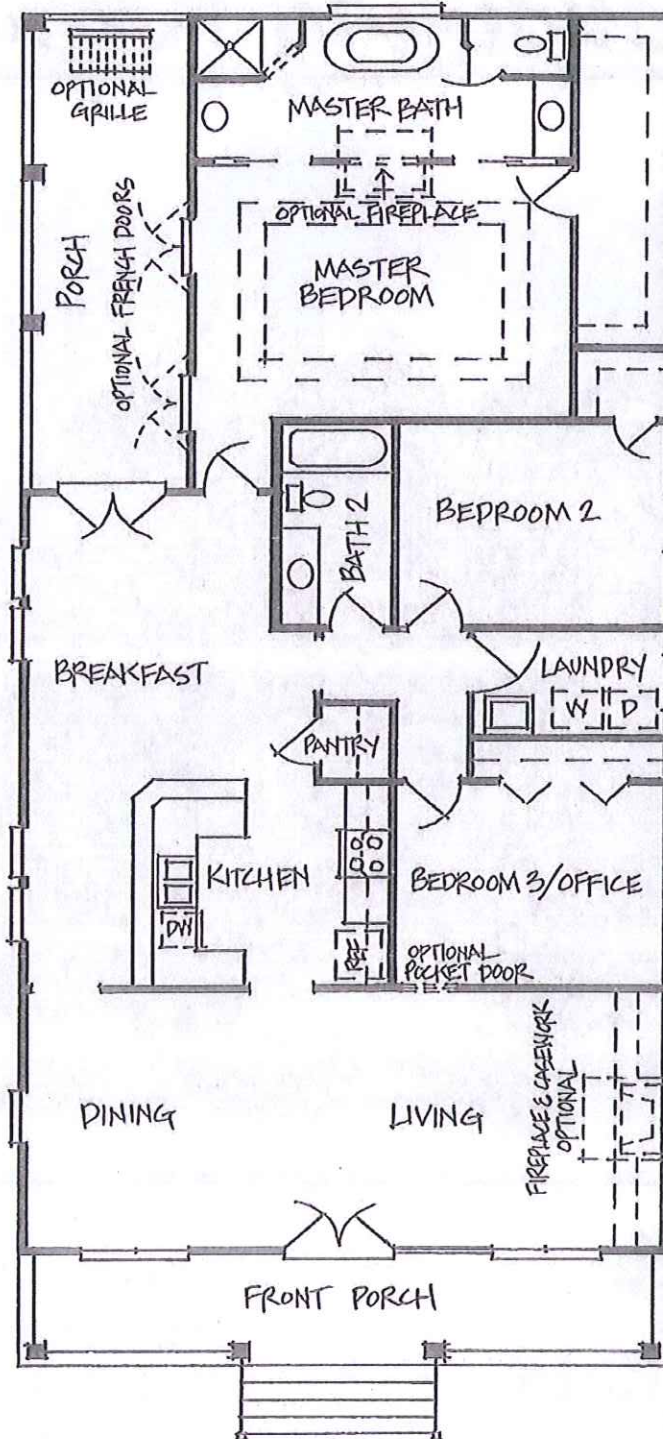
Vicksburg Regal



**LANDCRAFT
H O M E S**
www.landcrafthomes.com
(985) 651-3007

Living Sqft. 1750
Front Porch 219
Back Deck 151
Total 2120 Sqft.
3 Bedrooms 2 Baths

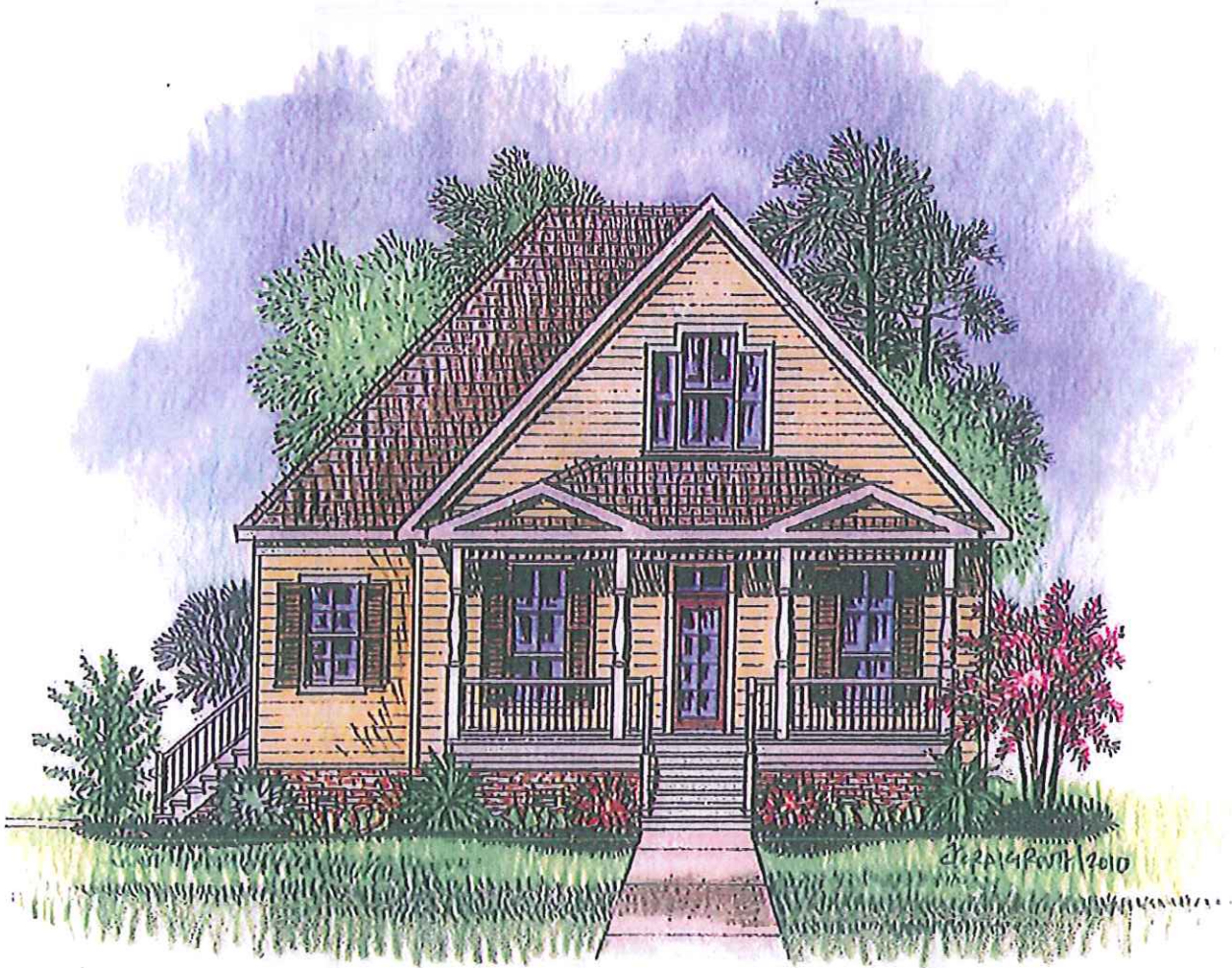
Vicksburg Regal



drawings depicting the outside of these homes may vary slightly. The layouts and sizes indicated on the floor plans are approximate, and may also vary slightly. Specifications, products, and prices are subject to change without notice.



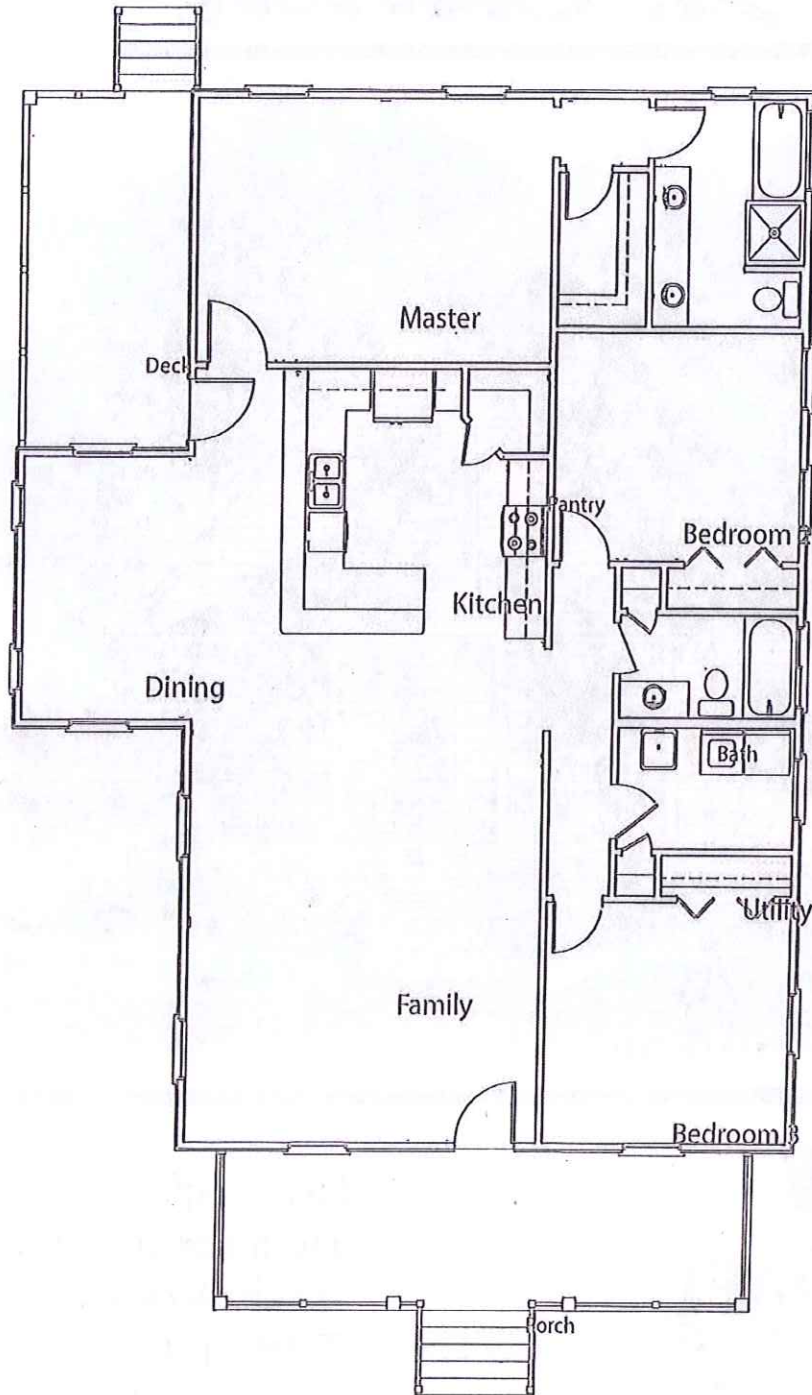
St. Charles



**LANDCRAFT
HOMES**
www.landcrafthomes.com
(985) 651-3007

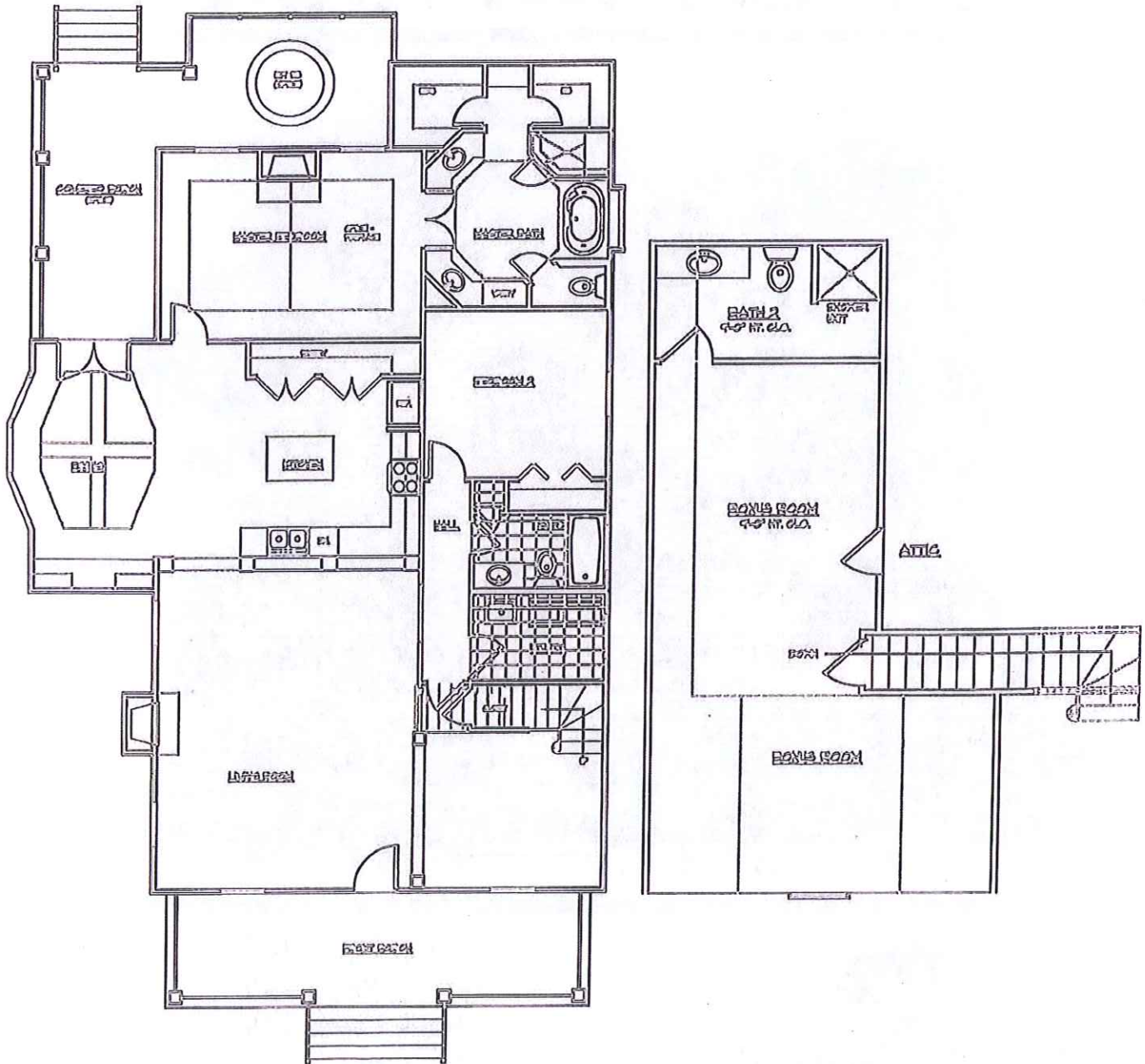
Living Sqft. 1750
Front Porch 219
Back Deck 151
Total 2120 Sqft.
3 Bedrooms 2 Baths

St. Charles



The drawings depicting the outside of these homes may vary slightly. The layouts and sizes indicated on the floor plans are approximate, and may also vary slightly. Specifications, products, and prices are subject to change without notice.

St. Charles Regal



The drawings depicting the outside of these homes may vary slightly. The layouts and sizes indicated on the floor plans are approximate, and may also vary slightly. Specifications, products, and prices are subject to change without notice.



Uptowner



LANDCRAFT
H O M E S

www.landcrafthomes.com

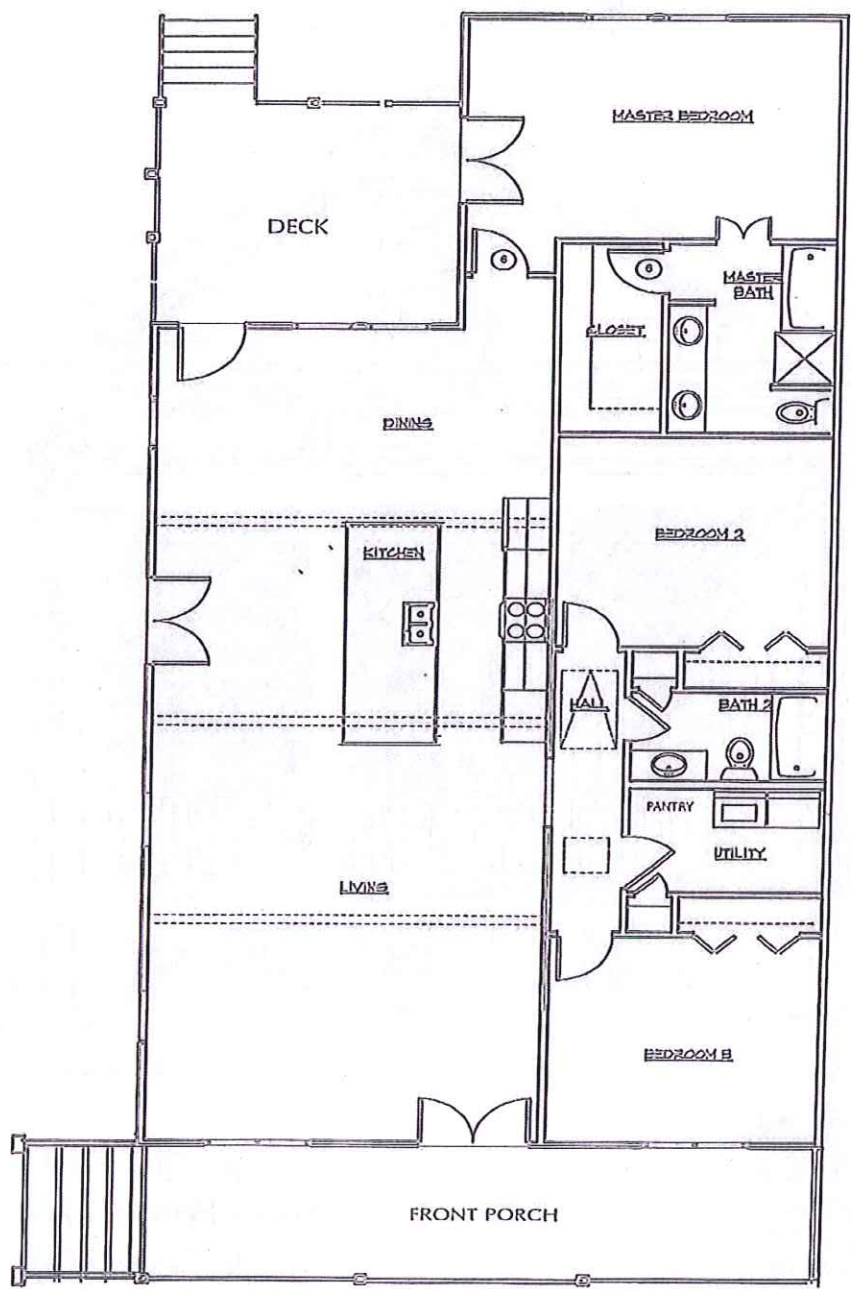
(985) 651-3007

Living Sqft. 1802
Front Porch 176
Back Deck 209
Total 2185 Sqft.
3 Bedrooms 2 Baths



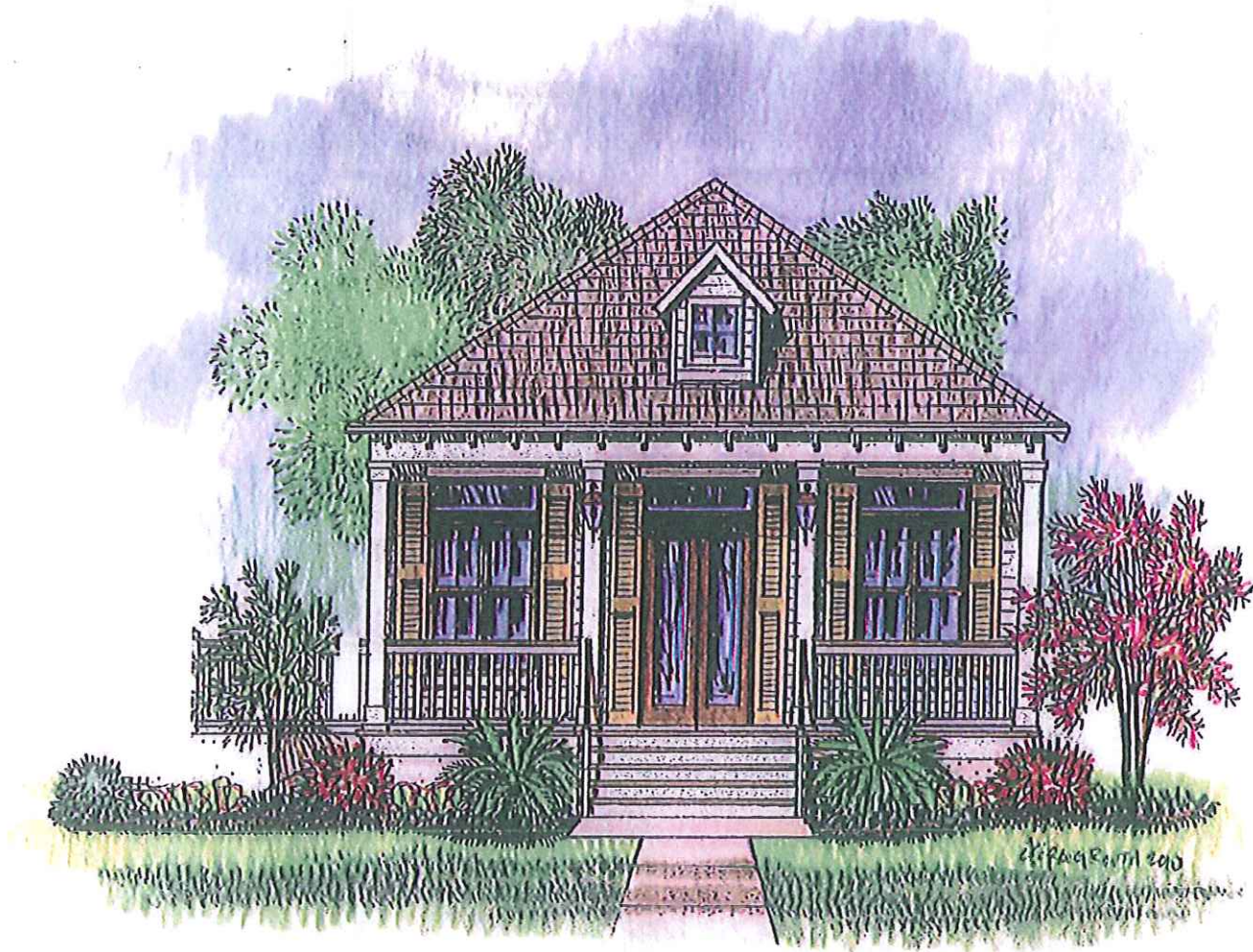
The drawings depicting the outside of these homes may vary slightly. The layouts and sizes indicated on the floor plans are approximate, and may also vary slightly. Specifications, products, and prices are subject to change without notice.

Uptowner






Pontchartrain

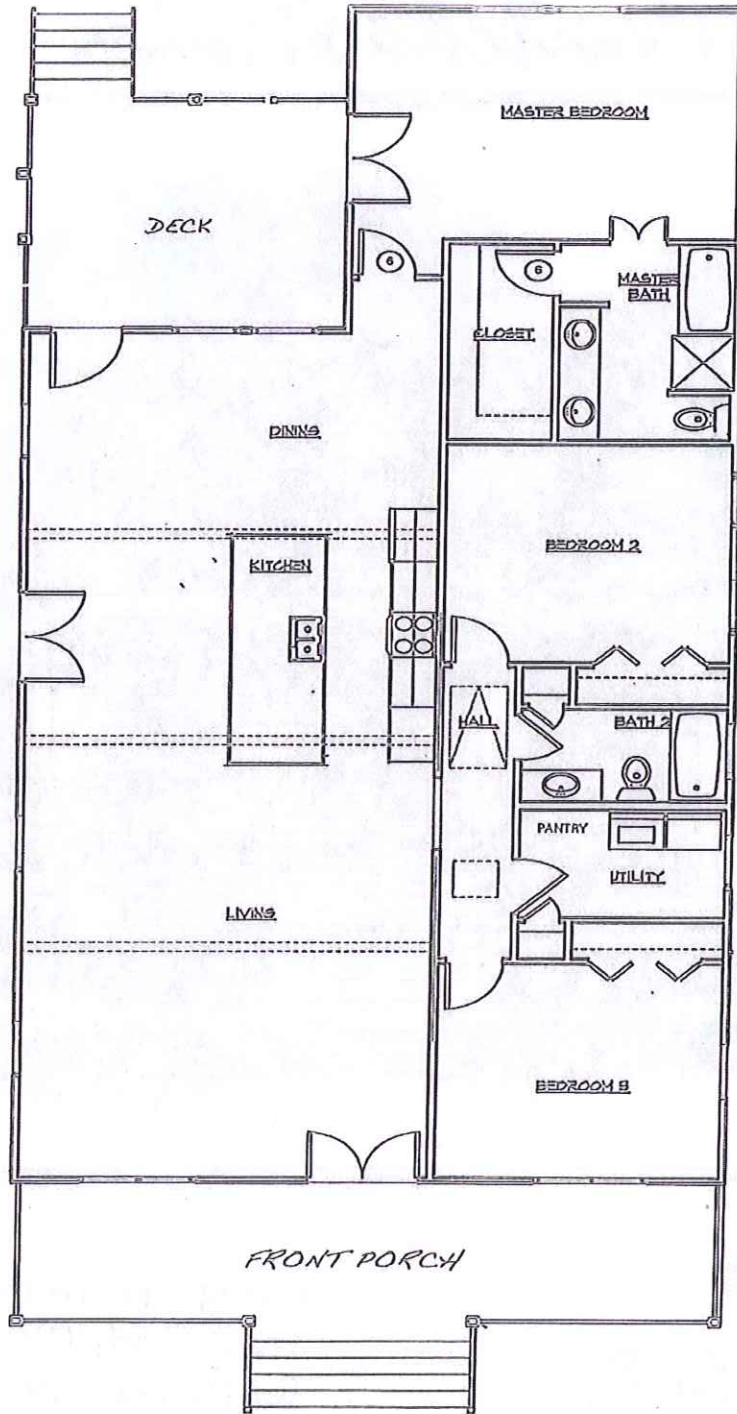


**LANDCRAFT
H O M E S**
www.landcrafthomes.com
(985) 651-3007

Living Sqft. 1800
Front Porch 176
Back Deck 209
Total Sqft. 2185
3 Bedrooms 2 Baths

 The drawings depicting the outside of these homes may vary slightly. The layouts and sizes indicated on the floor plans are approximate, and may also vary slightly. Specifications, products, and prices are subject to change without notice.

Fountainview



The drawings depicting the outside of these homes may vary slightly. The layouts and sizes indicated on the floor plans are approximate, and may also vary slightly. Specifications, products, and prices are subject to change without notice.



Louisville



**LANDCRAFT
H O M E S**

www.landcrafthomes.com

(985) 651-3007

Living Sqft. 1850

1st Floor 1185


2nd Floor 665

Front Porch 180

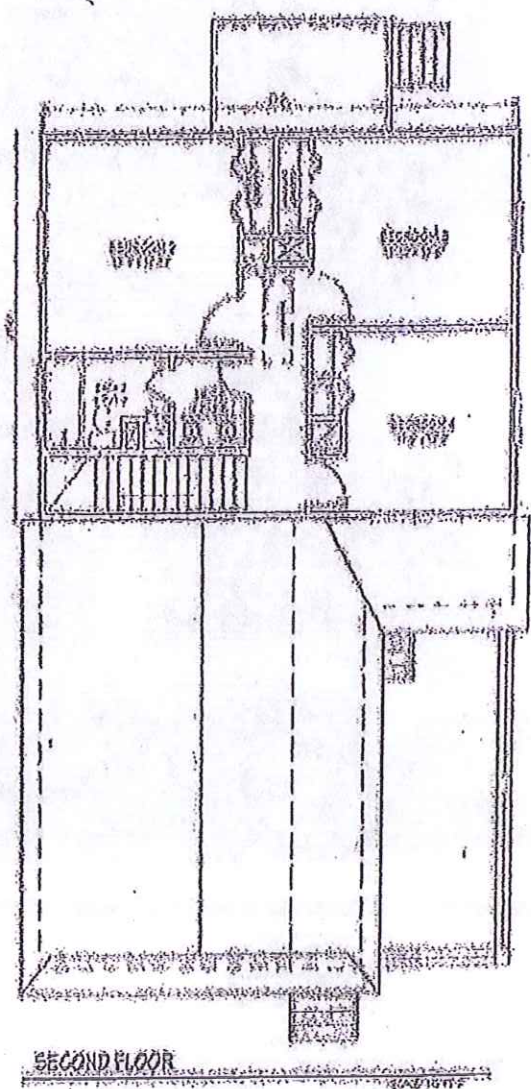
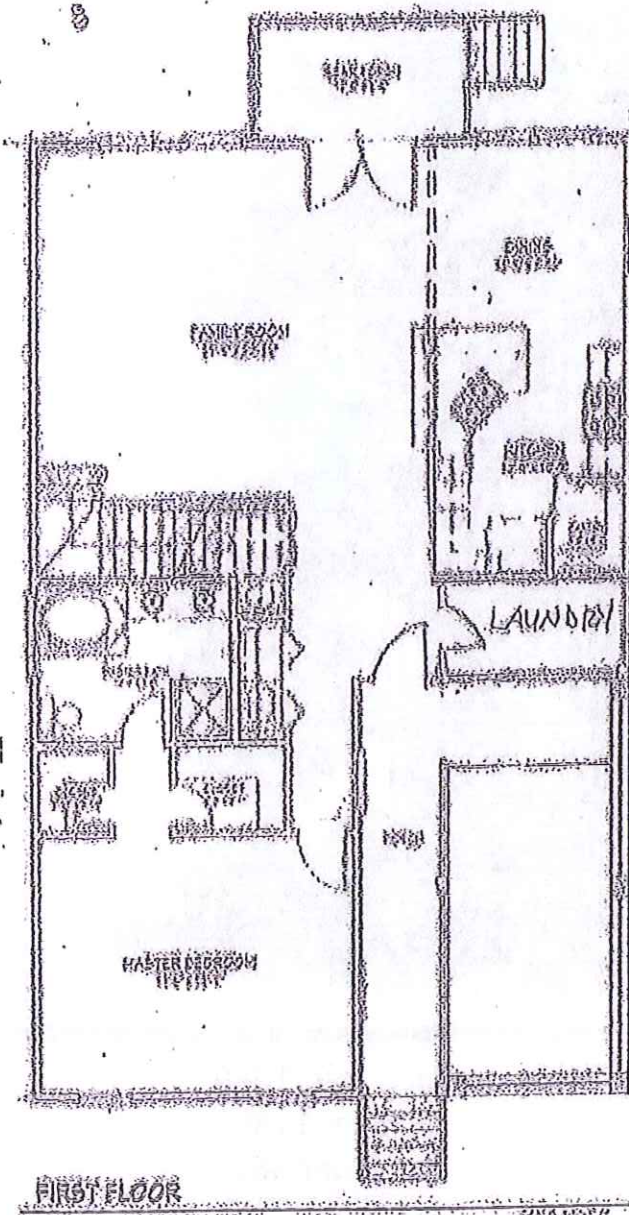
Back Porch 70


Total 2100 Sqft.

4 Bedrooms 2 1/2 Baths

 The drawings depicting the outside of these homes may vary slightly. The layouts and sizes indicated on the floor plans are approximate, and may also vary slightly. Specifications, products, and prices are subject to change without notice.

Lowville



 The drawings depicting the outside of these homes may vary slightly. The layouts and sizes indicated on the floor plans are approximate, and may also vary slightly. Specifications, products, and prices are subject to change without notice.



Louisville Regal



**LANDCRAFT
H O M E S**

www.landcrafthomes.com

(985) 651-3007

Living Sqft. 2150

1st Floor 1376

2nd Floor 775

Front Porch 149

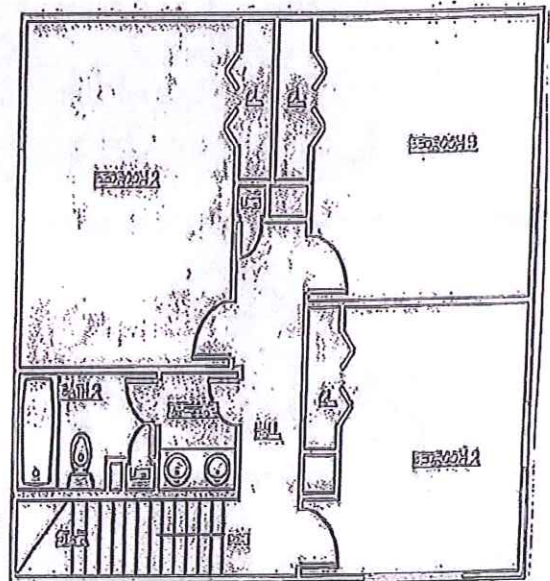
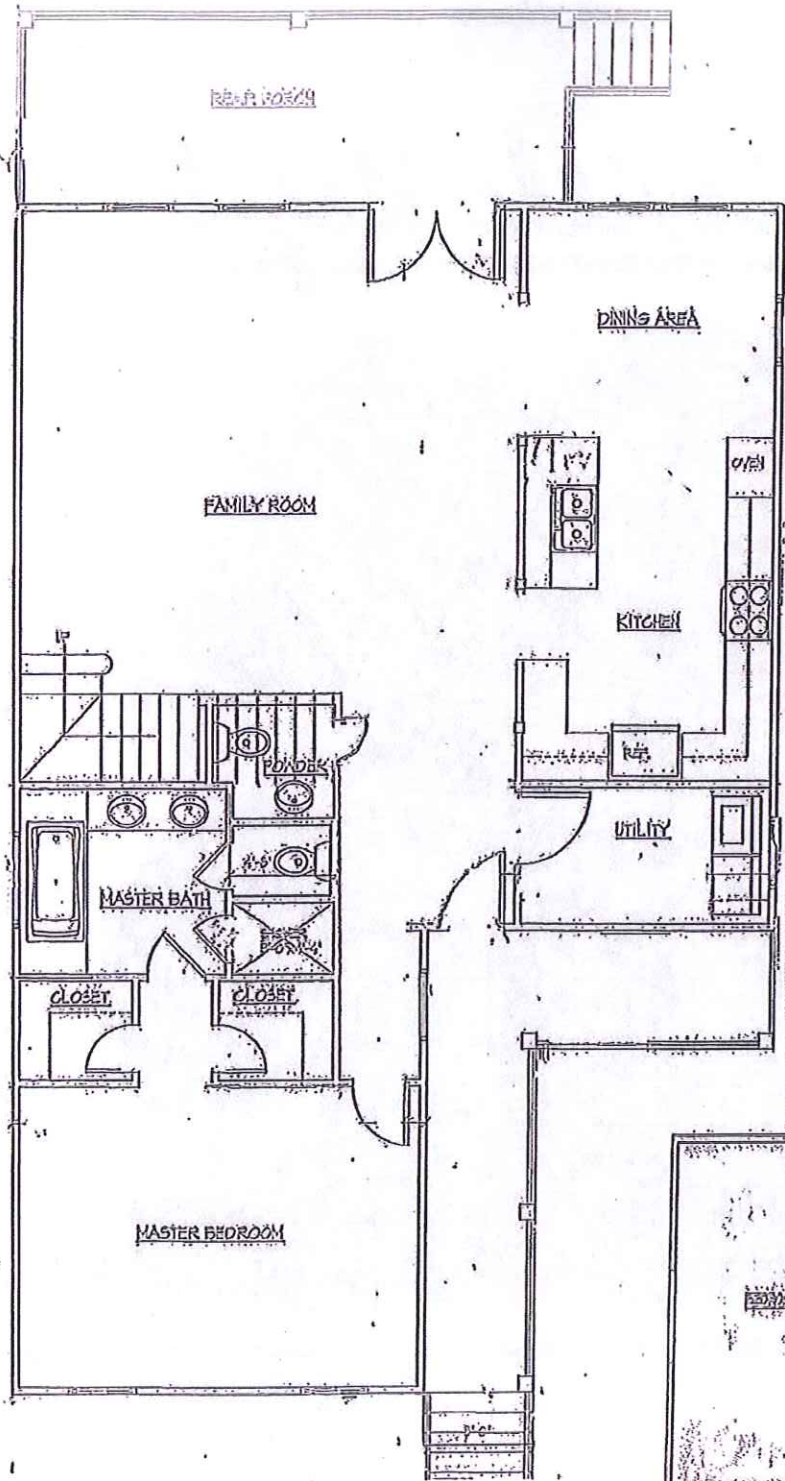
Back Porch 195

Total 2495

4 Bedrooms 2 1/2 Baths

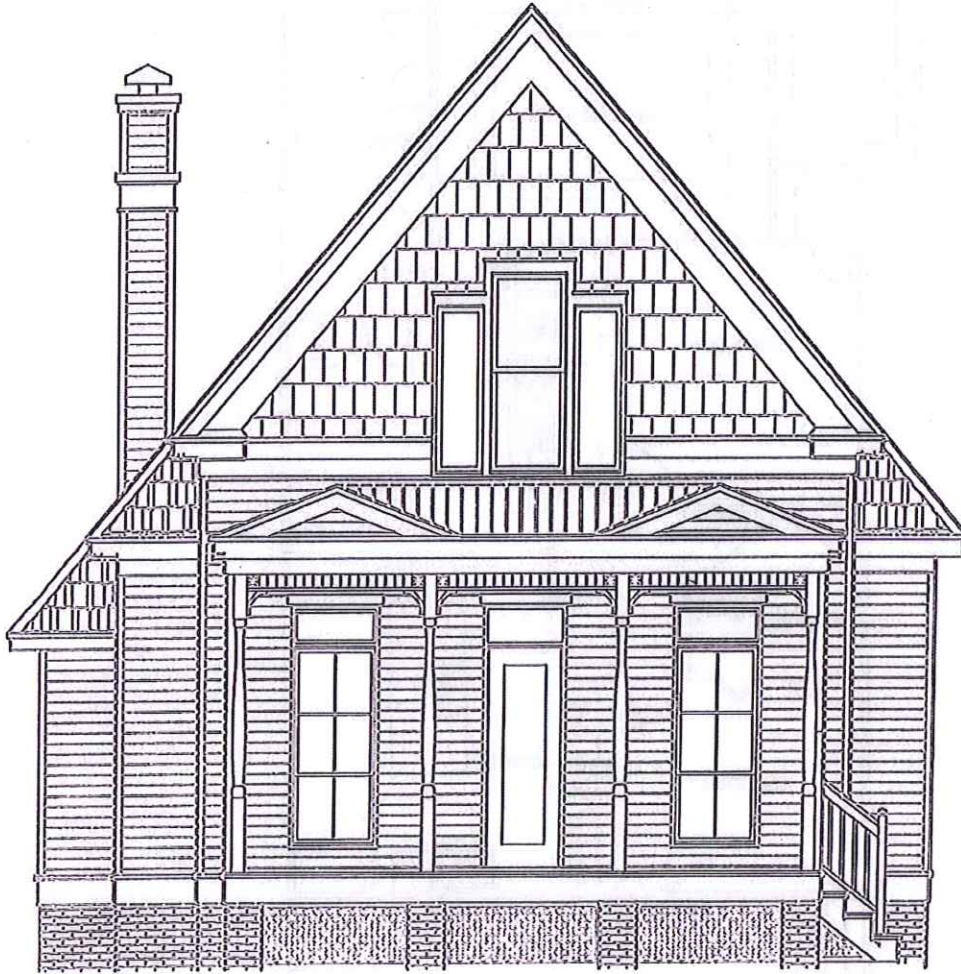


The drawings depicting the outside of these homes may vary slightly. The layouts and sizes indicated on the floor plans are approximate, and may also vary slightly. Specifications, products, and prices are subject to change without notice.





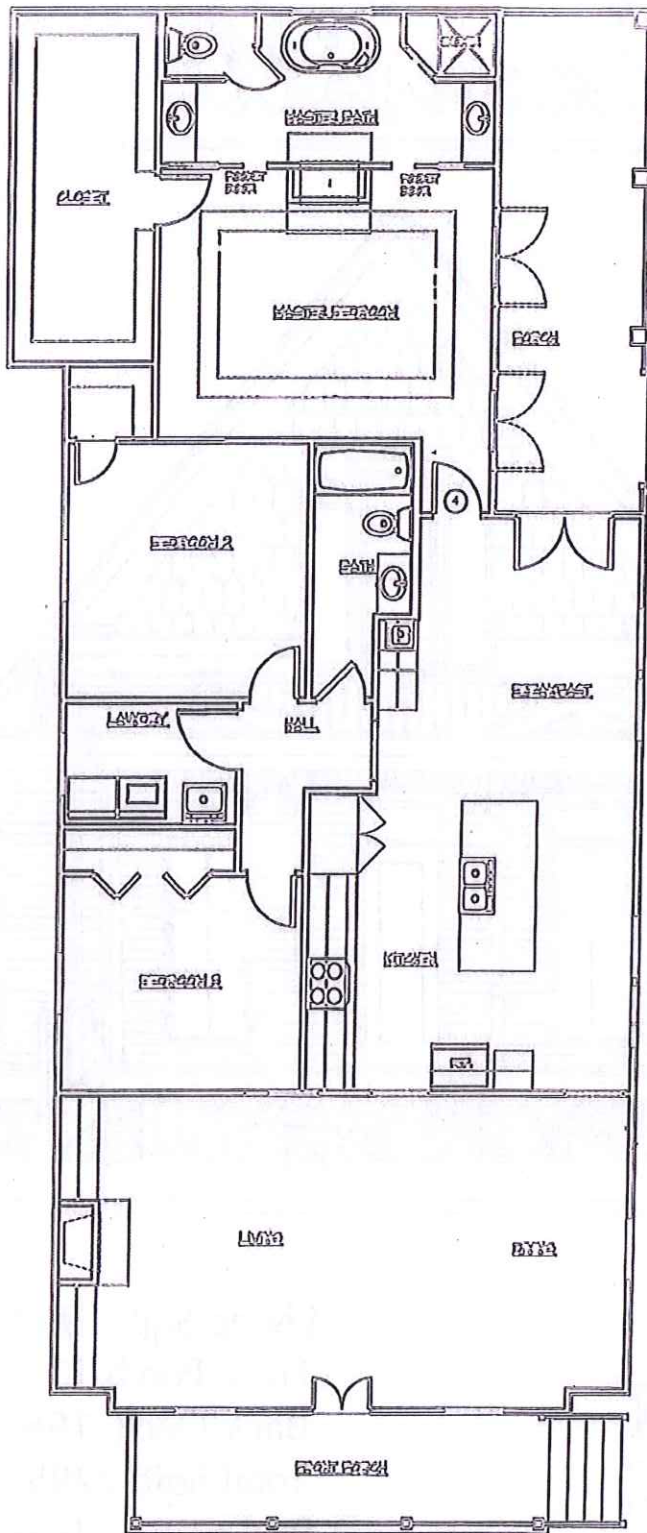
Laneville



LANDCRAFT
H O M E S
www.landcrafthomes.com
(985) 651-3007

Living Sqft. 1967
Front Porch 132
Back Deck 196
Total Sqft. 2295
3 Bedrooms 2 Baths

Laneville



The drawings depicting the outside of these homes may vary slightly. The layouts and sizes indicated on the floor plans are approximate, and may also vary slightly. Specifications, products, and prices are subject to change without notice.




Bellaire

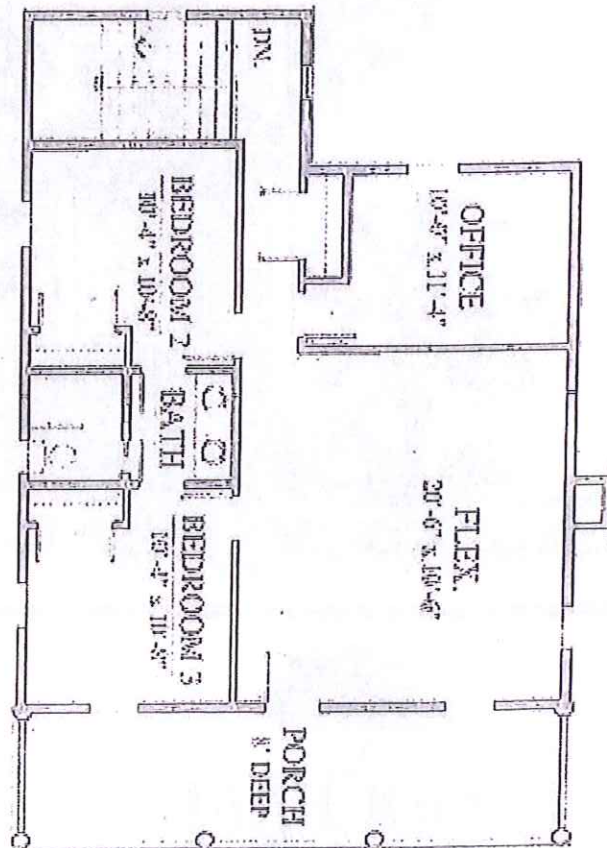
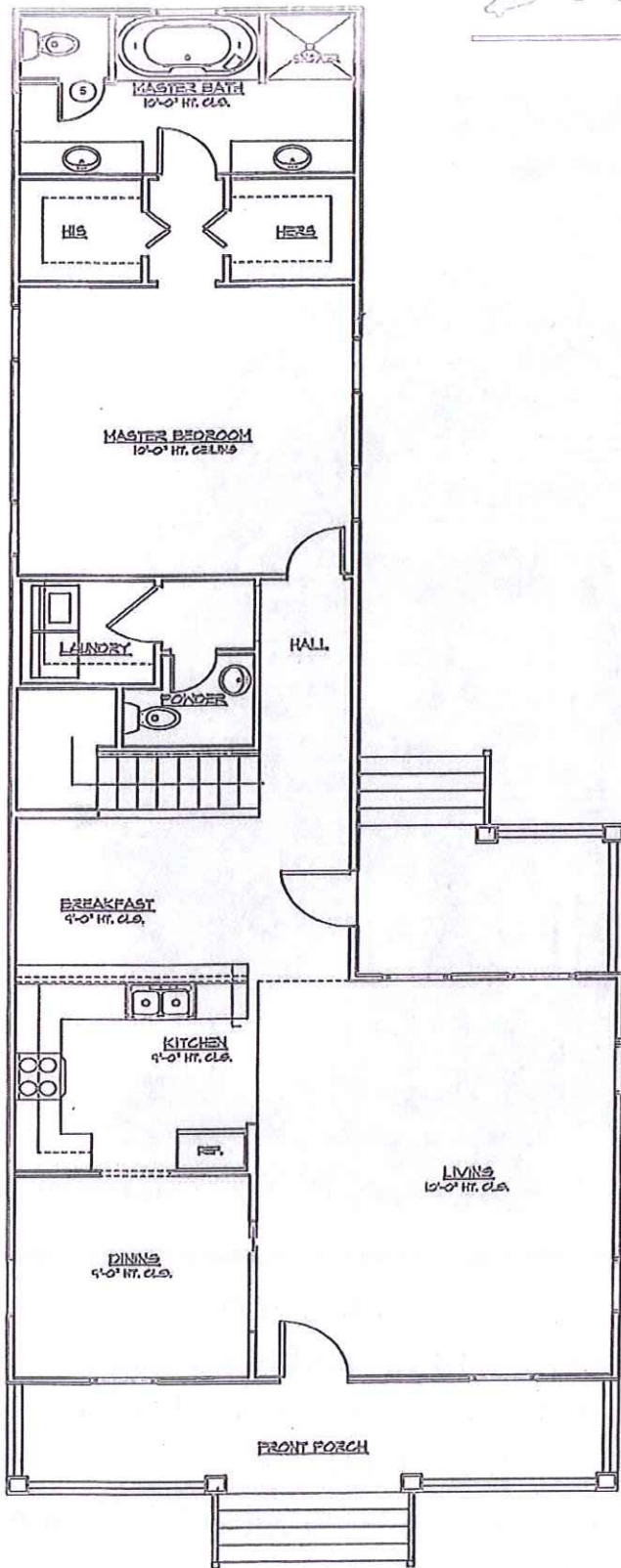


**LANDCRAFT
HOMES**
www.landcrafthomes.com
(985) 651-3007

Living Sqft. 2200
1st Floor 1356 2nd Floor 844
Front Porch 300 Back Porch 100
Total 2600 Sqft.
3 or 4 Bedrooms plus optional flex space
2 1/2 Baths

 The drawings depicting the outside of these homes may vary slightly. The layouts and sizes indicated on the floor plans are approximate, and may also vary slightly. Specifications, products, and prices are subject to change without notice.

Bellaire



The drawings depicting the outside of these homes may vary slightly. The layouts and sizes indicated on the floor plans are approximate, and may also vary slightly. Specifications, products, and prices are subject to change without notice.

Bancroft



Living Sqft. 2670
Porch & Deck 210 Sqft
Total 2880
4 Bedrooms 2 ½ Baths

