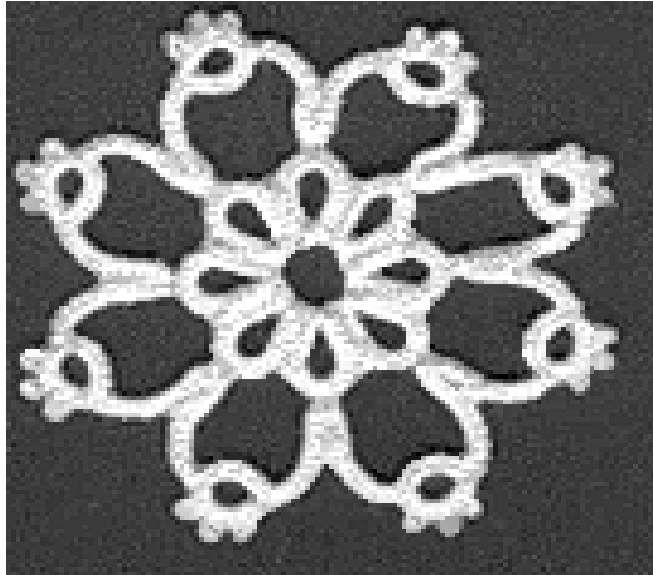


Split Ring Flower

Author - Gillian Buchanan



Lanzadera1 - SH1

R 6 DS, P, 4 DS, P, 4 DS, P, 6 DS, cl. R, do not RW.

Lanzadera1 - SH1

As close as possible to the last R, R 6 DS, J to last P of previous R, 4 DS, P, 4 DS, P, 6 DS, cl. R, do not RW. Repeat the last R until there are 7 Rs in total.

Split Ring

As close as possible to previous R, SH1 6 DS, J to P of adjacent R, 4 DS/SH2 6 DS, J to P of adjacent R, 4 DS, draw up Split Ring. Do not RW.

Lanzadera2 - SH2

C 4 DS, tiny P, 6 DS, RW.

Split Ring

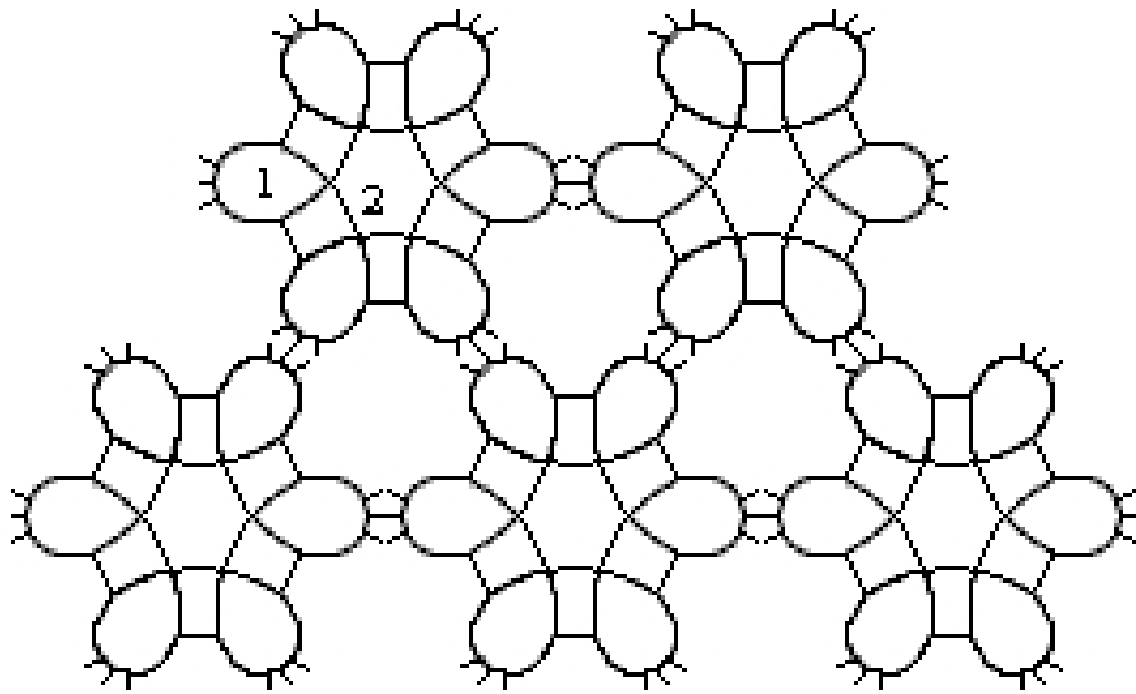
SH1 8 DS/SH2 2 DS, 3 P sep by 2 DS, 2 DS, cl. SR, do not RW (picots are decorative here, they can be longer).

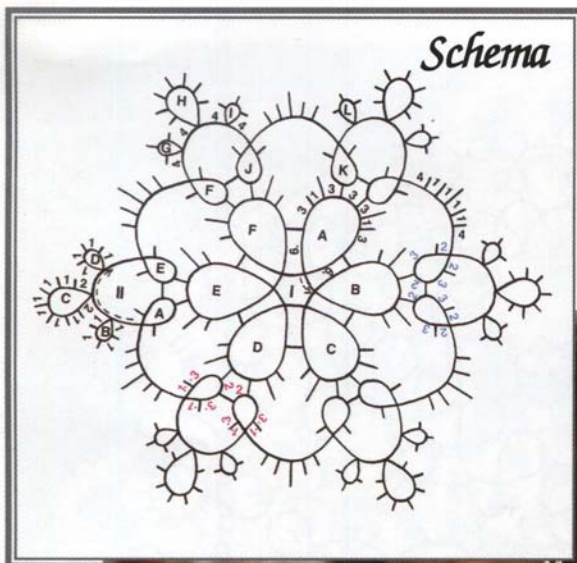
Lanzadera2-SH2

C 6 DS, tiny P, 6 DS, Shuttle Thread Join (Downwards Join) to free P of next R on the inner row, 4 DS, J to adjacent P of previous C, 6 DS, do not RW.

Continue round the motif as set, finish by joining the last C to the P of the 1st C and when this C is complete, J to the base of the 1st C where it climbs out of the SR from the centre and finish ends.

I hope you enjoy this pattern and find lots of creative ways to use it.





Size:

diameter: ca 6.5 cm

Materials:

size 10 tatting thread, ecru
two shuttles
1.1 mm crochet

