

CLIENT COPY - THE FINAL FILED RECORD WILL NOT HAVE THIS STATEMENT ON IT

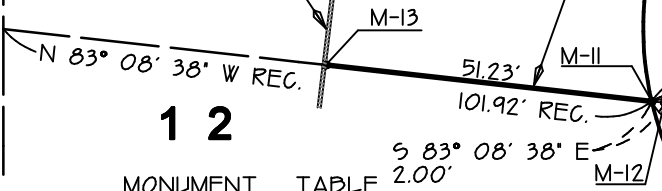
Line	Direction	Distance
L1	N 45° 12' 03" E	25.88'
L2	S 89° 36' 23" E	18.45'
L3	S 45° 55' 22" E	28.35'
L4	S 45° 10' 17" W	29.12'
L5	N 89° 30' 42" W	18.34'
L6	N 42° 46' 40" E	40.68'
L7	S 52° 28' 39" E	38.30'
L8	S 0° 29' 59" W	38.39'
L9	S 42° 48' 41" W	38.35'



M-6 : HELD FOR CENTERLINE PRODUCED PER NOTED TRACT TIES

1 1
COMMON LINE OF LOTS II AND 12, TRACT NO. 4523
M.M. 159 PGS 30 AND 31 : PARTIALLY SURVEYED

CONCRETE SCREEN WALL



1 2

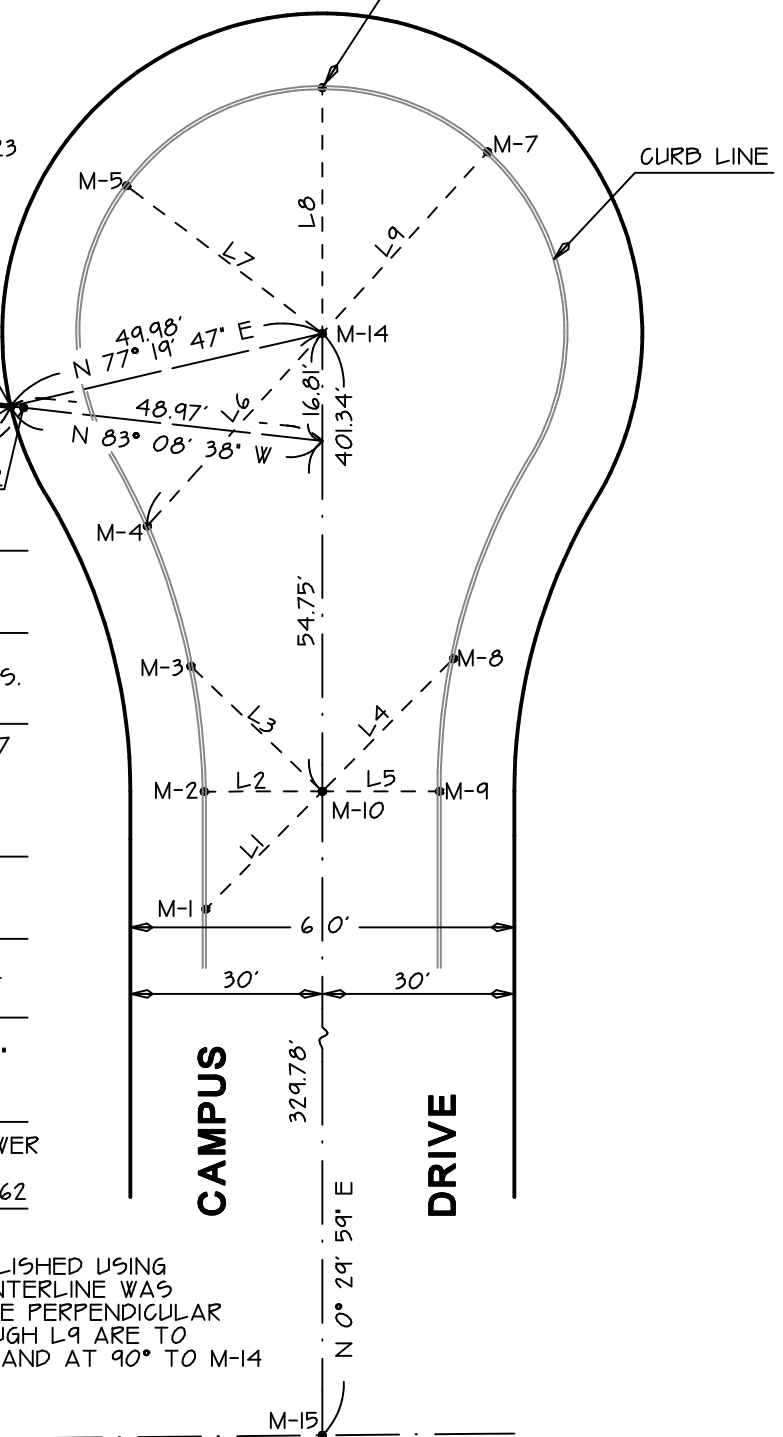
MONUMENT TABLE

MONUMENT NO.	DESCRIPTION
M-1 - M-9	FD. RAMSET IN T.C PER TRACT TIE NOTES . O.C.S. A/4-10
M-10	FD. SPIKE/TIN 0.3' DOWN PER TRACT TIE NOTES . O.C.S. A/4-10
M-11	FD. 1" (I.D.) IRON PIPE L5 2477 0.6' BELOW B.W. GRADE PER SAID TRACT NO. 4523. UN-DISTURBED ORIGINAL LOT CORNER
M-12	SET LEAD/TAG L5 4722 ON LOT LINE PRODUCED, 2.00' OFFSET FROM M-11
M-13	SET LEAD/TAG L5 4722 IN MORTAR JOINT OF WALL +/- 2' UP FROM GRADE
M-14	FD. SPIKE/TIN ON SURFACE 'ORANGE COUNTY SURVEYOR' NO REFERENCE - 0.02' W'LY OF LINE. SEE NOTE 'A'
M-15	FD. (4) PUNCH MARKS IN SEWER MAN HOLE RIM PER CITY OF ANAHEIM TIE BOOK 19 PAGE 62

NOTE 'A'

THE CENTERLINE OF CAMPUS DRIVE WAS ESTABLISHED USING M-15, M-10 AND M-6. THE TERMINUS OF THE CENTERLINE WAS ESTABLISHED WHERE THE CENTERLINE WOULD BE PERPENDICULAR TO M-14. THE LINE TABLE VALUES OF L6 THROUGH L9 ARE TO THIS PERPENDICULAR POINT, OFFSET 0.02' E'LY AND AT 90° TO M-14

- FOUND OR SET MONUMENT AS DESCRIBED



STONYBROOK DRIVE