

SCALE: 1" = 60'

# RECORD OF SURVEY

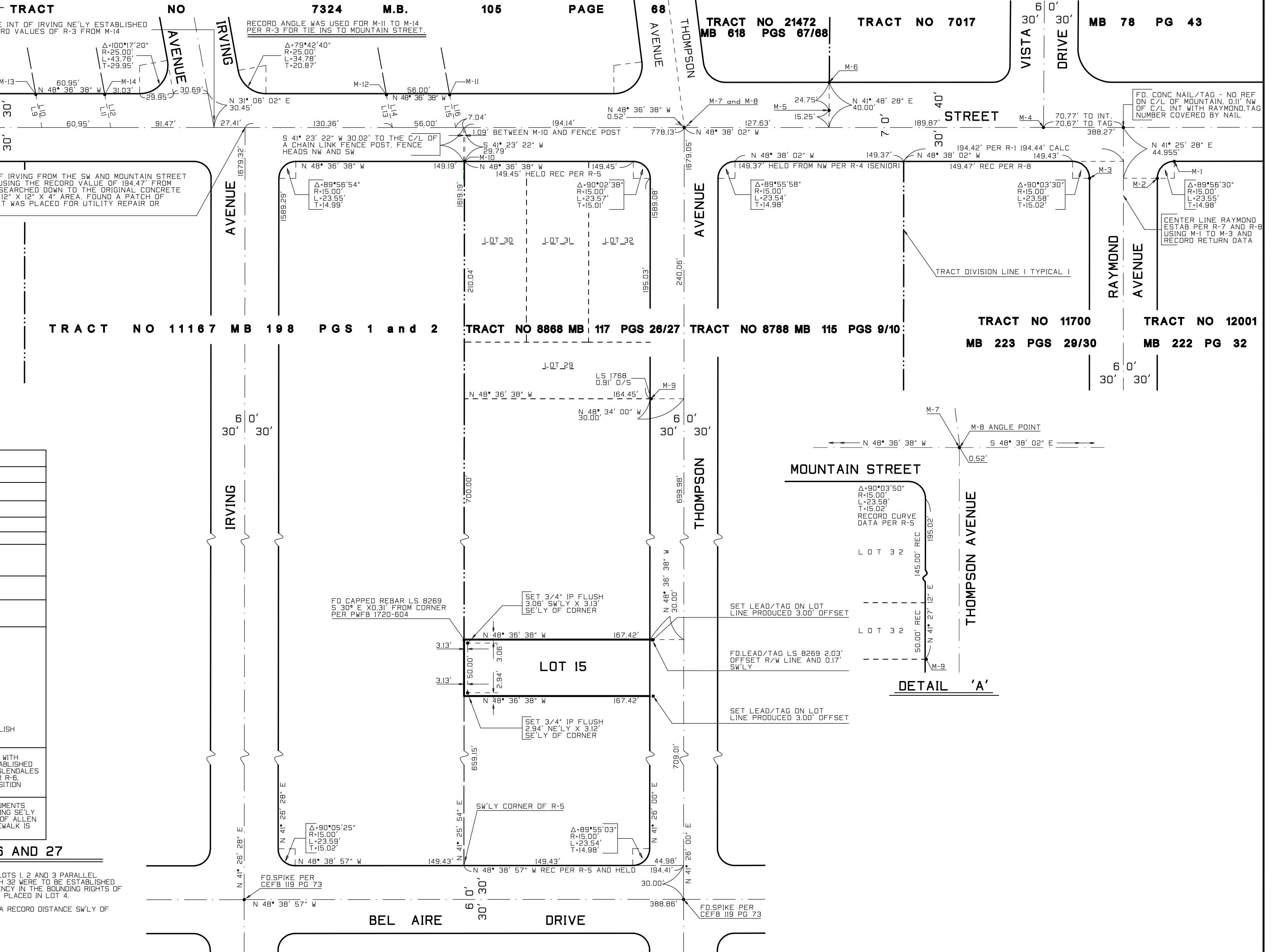
SHEET 2 OF 2 SHEETS

CLIENT COPY OF FIRST SUBMITTAL TO LA COUNTY  
SUBJECT TO REVIEW CHANGES FOR MATH AND TYPOS  
ONLY SEPT 21, 2010

IN THE CITY OF GLENDALE  
COUNTY OF LOS ANGELES  
STATE OF CALIFORNIA

BEING A INITIAL SURVEY OF LOT 14, TRACT NO. 8868 AS PER MAP  
RECORDED IN BOOK 117 PAGES 26 AND 27 OF MAPS, RECORDS OF SAID COUNTY

TRACT REFERENCES BY SENIORITY OF RECORDING	REC. DATE	STATE LICENSE NUMBER
R - 1	TRACT NO. 8531 M.B. 69 PAGE 43	MAY 1923 LS 1295
R - 2	TRACT NO. 7017 M.B. 78 PAGE 43	OCT. 1923 I.G. DESSERTY
R - 3	TRACT NO. 7324 M.B. 105 PAGE 68	NOV. 1924 RCE 265
R - 4	TRACT NO. 8788 M.B. 115 PAGE 9/10	JUN. 1925 RCE 1551
R - 5	TRACT NO. 8868 M.B. 117 PAGES 26/27	SEP. 1925 RCE 1008 and LS 1336 ( DUAL LICENSED )
R - 6	TRACT NO. 11167 M.B. 198 PAGES 1/2	FEB. 1937 LS 664
R - 7	TRACT NO. 12001 M.B. 222 PAGE 32	NOV 1939 RCE 3338
R - 8	TRACT NO. 11700 M.B. 223 PAGES 29/30	DEC 1939 LS 1768
R - 9	TRACT NO. 21472 M.B. 618 PAGES 67/68	JUN 1957 LS 1768



FOUND REFERENCED AND NON REFERENCED MONUMENTS, TIE BEARINGS FROM TANGENT TIE INTERSECTION TO NOTED MONUMENTS, REFERENCE CITY FIELD BOOK 103 PAGE 79 BOOK DATED 1962, HELD FOR A POINT ON THE CENTERLINE OF MOUNTAIN AT ALLEN AVENUE SOUTH WESTERLY

Line	Direction	Distance	Monument Description
L1	N 13° 42' 40" W	26.16'	FD. C.O.G. LEAD/TAG PER 103 PG 79
L2	S 13° 42' 40" E	36.915'	FD. C.O.G. LEAD/TAG PER 103 PG 79
L3	N 85° 41' 13" W	36.940'	FD. C.O.G. LEAD/TAG PER 103 PG 79
L4	S 85° 41' 13" E	24.865'	FD. C.O.G. LEAD/TAG PER 103 PG 79
L5	N 16° 39' 13" W	28.25'	FD. LEAD/NAIL IN TC - NO REF.
L6	N 20° 35' 08" E	16.025'	FD. LEAD/NAIL IN TC - NO REF.
L7	N 41° 26' 04" E	14.955'	FD. LEAD/NAIL IN TC PER 103 PG 79
L8	N 57° 45' 30" E	15.56'	FD. LEAD/NAIL IN TC - NO REF.
L9	N 31° 06' 02" E	30.49'	TIE TO SIDELINE
L10	N 31° 06' 02" E	29.88'	TIE TO MONUMENT
L11	N 31° 06' 02" E	30.49'	TIE TO SIDELINE
L12	N 31° 06' 02" E	29.83'	TIE TO MONUMENT
L13	N 31° 06' 02" E	30.49'	TIE TO SIDELINE
L14	N 31° 06' 02" E	29.52'	TIE TO MONUMENT
L15	N 31° 06' 02" E	30.49'	TIE TO SIDELINE
L16	N 31° 06' 02" E	29.51'	TIE TO MONUMENT

### MONUMENT TABLE AND NOTATIONS

M-NUMBER	DESCRIPTION AND COMMENTS
M-1	FD. 2" IRON PIPE 8" DN FROM B/W RCE 3338 PER R - 7
M-2	FD. 2" IRON PIPE 12" DN FROM B/W NO TAG USED C/L PER R - 7
M-3	FD. 2" IRON PIPE 9" DN FROM B/W NO TAG USED C/L PER R - 8
M-4	FD. SPIKE PER PWFB 1720-371/372
M-5	FD. LEAD/TAG PER PWFB 1720 - 371/372 LS 5691
M-6	FD. OLD 2" IRON PIPE 3" UP NO TAG USED C/L PER R - 9
M-7	FD. C.O.G. WELL MON (EAST) ON C/L MOUNTAIN AND THE CURRENT ANGLE POINT OF MOUNTAIN TO THE NW PER CEFB 362 PG 92 BEING THE SE'LY TERMINUS OF THOMPSON AVENUE NE'LY
M-8	FD. C.O.G. WELL MON (WEST) ON C/L MOUNTAIN TO ALLEN AVENUE SW'LY AT THE NE'LY TERMINUS OF THOMPSON AVENUE SW'LY PER CEFB 362 PG 92
M-9	FD. LEAD/TAG LS 1768 NO REF HELD AS A MONUMENT ORIGINALLY SET AT A RECORD VALUE OF 195.00 SW'LY OF THE SW'LY RETURN OF LOT 32 OF R-5. SEE DETAIL 'A'
M-10	FD. 2" IRON PIPE 18" DEEP, NO TAG USED C/L. ACCEPTED AS THE PIPE THAT LS 664 (EDWARD M. LYNCH) SET FOR THE NE CORNER OF R-6, NOT ACCEPTED AS BEING ON THE NW CORNER OR ON THE NW'LY LINE OF R-5. LYNCH REJECTED THE CITY TIES THAT R-5 HAD USED IN SETTING HIS NW'LY TRACT CORNER. LYNCH NOTES ON HIS MAP, R-6, THAT HE USED A MONUMENT THAT IS NOTED IN COUNTY SURVEYOR FIELD BOOK 472 - 183 IN LIEU OF THE CITY TIES. THE SUBDIVISIONS ON THE SOUTHERLY SIDELINE OF MOUNTAIN, SE'LY OF THOMPSON TO THE SW AGREE ON THE POSITION OF M-9 AS BEING THE PERPETUATED CITY MONUMENT POINT THAT R-5 NOTES ON HIS MAP, LS 1768, M-9, WHO DID TWO SUBDIVISIONS IN THE IMMEDIATE AREA, R-8 AND R-9, ONE ON THE NORTH SIDE OF THE SIDELINE OF MOUNTAIN AND ONE ON THE SOUTH SIDE OF THE SIDELINE OF MOUNTAIN ALSO SUBSTANTIATES R-5'S STARTING POSITION. IT IS MY OPINION THAT LYNCH ERRED IN HIS STARTING MONUMENT ON MOUNTAIN ON THE SE AS NOTED ON HIS MAP. THOUGH LYNCH'S PIPE CANNOT BE HELD FOR ANY OF R-5, IT WAS HELD TO ESTABLISH THE CENTERLINE INTERSECTION OF IRVING FROM THE SW WITH THE CENTERLINE OF MOUNTAIN.
M-11	FD. LEAD/TAG RCE 3338 - NO REFERENCE. THESE MONUMENTS APPEAR TO AGREE WITH THE CENTERLINE OF MOUNTAIN BETWEEN M-9 AND ALLEN AVENUE (SW'LY) AS ESTABLISHED BUT THEY ALSO INDICATE THAT EITHER A MONUMENT OTHER THAN THE CITY OF GLENDALES WAS USED IN LIEU OF M-9 OR ONE OF LYNCH'S SET MONUMENTS IN MOUNTAIN. PER R-6, WAS USED. ANALYSIS HAS SHOWN THAT M-11 and M-12 LIES WITHIN 0.06' OF THE POSITION OF THE COUNTY MONUMENT THAT LYNCH USED IN LIEU OF M-9.
M-13	FD. OLD LEAD AND NAILS IN ORIGINAL SIDEWALK, NO REFERENCE. THESE TWO MONUMENTS AGREE WITH M-9'S POSITION WITHIN 0.04' USING THE RECORD VALUES OF R-3 TRACING SE'LY FROM M-13. THEY DO NOT NECESSARILY AGREE WITH THE CENTERLINE ALIGNMENT OF ALLEN MOUNTAIN USING ALLEN AVENUE (SW'LY) AS TIED OUT. THE OFFSET INTO THE SIDEWALK IS NOT THE NORM, BUT STRANGER THINGS HAVE HAPPENED.
M-14	

### INTENT OF TRACT NO. 8868, M.B. 117 PAGES 26 AND 27

THE INTENT OF THE AUTHOR OF SAID TRACT NO. 8868 WAS TO ESTABLISH THE REAR LINES OF LOTS 1, 2 AND 3 PARALLEL WITH AND AT RECORD DISTANCE N'LY OF BEL AIRE AVENUE. THE SIDELINES OF LOTS 5 THROUGH 32 WERE TO BE ESTABLISHED PARALLEL WITH AND AT RECORD DISTANCE SE'LY OF MOUNTAIN STREET. ANY EXCESS OR DEFICIENCY IN THE BOUNDING RIGHTS OF WAY, BEL AIRE AND MOUNTAIN, AS THE NOTED CONTROL MONUMENTS WERE MEASURED WAS TO BE PLACED IN LOT 4.

THIS SURVEY HAS FOLLOWED THAT INTENT ESTABLISHING THE COMMON LINE OF LOTS 14 AND IS A RECORD DISTANCE SW'LY OF LS 1768, M-9, 700.00' AND PARALLEL WITH MOUNTAIN STREET.