



Twenty years ago Joseph Scontrino founded Landcraft Homes on the belief that it really is possible to build a spectacular, high-quality home in a desirable neighborhood, without breaking the bank. Landcraft's dedication to quality and commitment to detail has made Landcraft the largest residential builder in the River Parishes and the second largest in the state, starting over 100 homes in 2009 and 2010. We've worked hard to earn a reputation of trust and superior craftsmanship...it is a reputation that is apparent in every home we build, and in every customer we serve. Landcraft developments are located throughout the River Region of St. Charles, St. John, and St. James Parishes and we currently have homes under construction in Lakeview and Old Metairie.

Landcraft has brought our philosophy and experience to the New Orleans area by offering all clients a streamlined **"One-Closing Solution"** to building and financing their dream home:

1. **Choose your floor plan & elevation from our library of flexible plans**
2. **Choose your colors, flooring, granite, hardware, lighting and trim**
3. **Submit a 5% non-refundable deposit**
4. **Landcraft BUYS the lot of your choice or builds on your lot**
5. **Landcraft PAYS for the construction of your home**
6. **Secure a home mortgage with your lender**

Our **"One-Closing Solution"** *saves you thousands of dollars* in interest and closing costs because we eliminate the financial burden of land acquisition and a construction loan.

Please contact me for more information and I look forward to working with you soon.

Vince Liuzza, III
Vice President

504-237-9634 107 Fairway Dr. LaPlace, La 70068 Fax 504-910-5968

vliuzza3@yahoo.com

www.landcrafthomes.com





Lakeview & Old Metairie

HOME PRICES

MODEL NAME	LIVING	PORCHES	TOTAL	PRICE
Filmore	1350	200	1550	\$ 180,000
Vicksburg	1600	335	1935	\$ 215,000
Vicksburg Regal	1750	370	2120	\$ 235,000
St.Charles	1750	370	2120	\$ 246,900
St. Charles Regal*	1895	550	2445	\$ 266,900
Uptowner	1800	385	2185	\$ 246,900
Pontchartrain	1800	385	2185	\$ 246,900
Louisville	1850	250	2100	\$ 240,900
Louisville Regal	2150	345	2495	\$ 279,000
Laneville	1965	330	2295	\$ 259,900
Bellaire	2200	400	2600	\$ 286,900
Bancroft	2670	210	2880	\$ 349,900

Vince Liuzza 504-237-9634 vliuzza@landcrafthomes.com

www.landcrafthomes.com

107 Fairway Drive, LaPlace, La 70068 985-651-3007

* Price does not include the upstairs Bonus Room option.

The above prices do not include lot or other land costs. All information is deemed reliable but not guaranteed. All information is subject to change without notification.





Lakeview & Old Metairie

STANDARD FEATURES

INTERIOR FEATURES

10' ceilings on the first floor
Wood floors in living areas
Ceramic tile in all wet areas - bathrooms, laundry
7" baseboards
Real wood shelving in pantry and all closets
Telephone and cable outlet in living and bedrooms
Raised panel interior doors
Decorator light fixtures
Two ceiling fans - master and living rooms
Recessed lights - per plan
Smoke detectors
Attic stairs (one set)

KITCHEN FEATURES

Granite slab countertops
Stainless steel appliances
30" gas range with electric oven
Microwave/Vent combination
Dishwasher
Disposal
Undermount stainless steel 8" double bowl sink
36" tall custom wood cabinets
Delta Leeland faucet with sprayer and soap dispenser
Waterline for icemaker

BATHROOM FEATURES

Marbella vanity tops with backsplash
Marbella master shower
Garden tub - per plan
Elongated toilets
Delta washerless facets
Plate glass mirrors above vanities
Heater and exhaust fan

EXTERIOR FEATURES

Real wood porches, decks and patios - per plan
Gas lantern on the front porch
Brick skirt around entire foundation
Rear entry - per plan
Cement sidewalks and walkways - per plan
Cement parking pad for 2 cars
4x8 sheathing of entire exterior walls
Quality cement fiber board
130 mph engineered windload windows
Two water faucets (minimum)
Two weatherproof electrical outlets (minimum)

QUALITY CONSTRUCTION

1 year new home warranty
5 year structural warranty
30 year warranted dimensional roof shingles
Stick-built on site - not prefabricated
16" on-center studs, load bearing walls
Kiln dried lumber for framing and decking
12-2 electrical wire
Termite treated sub-soil
3000 PSI concrete foundation

ENERGY EFFICIENCY

High efficiency air conditioner
Polycell foam in all wall penetrations
R-13 rating for exterior walls
Double insulated aluminum windows
High recovery electric water heater (50 gallon)





Filmore

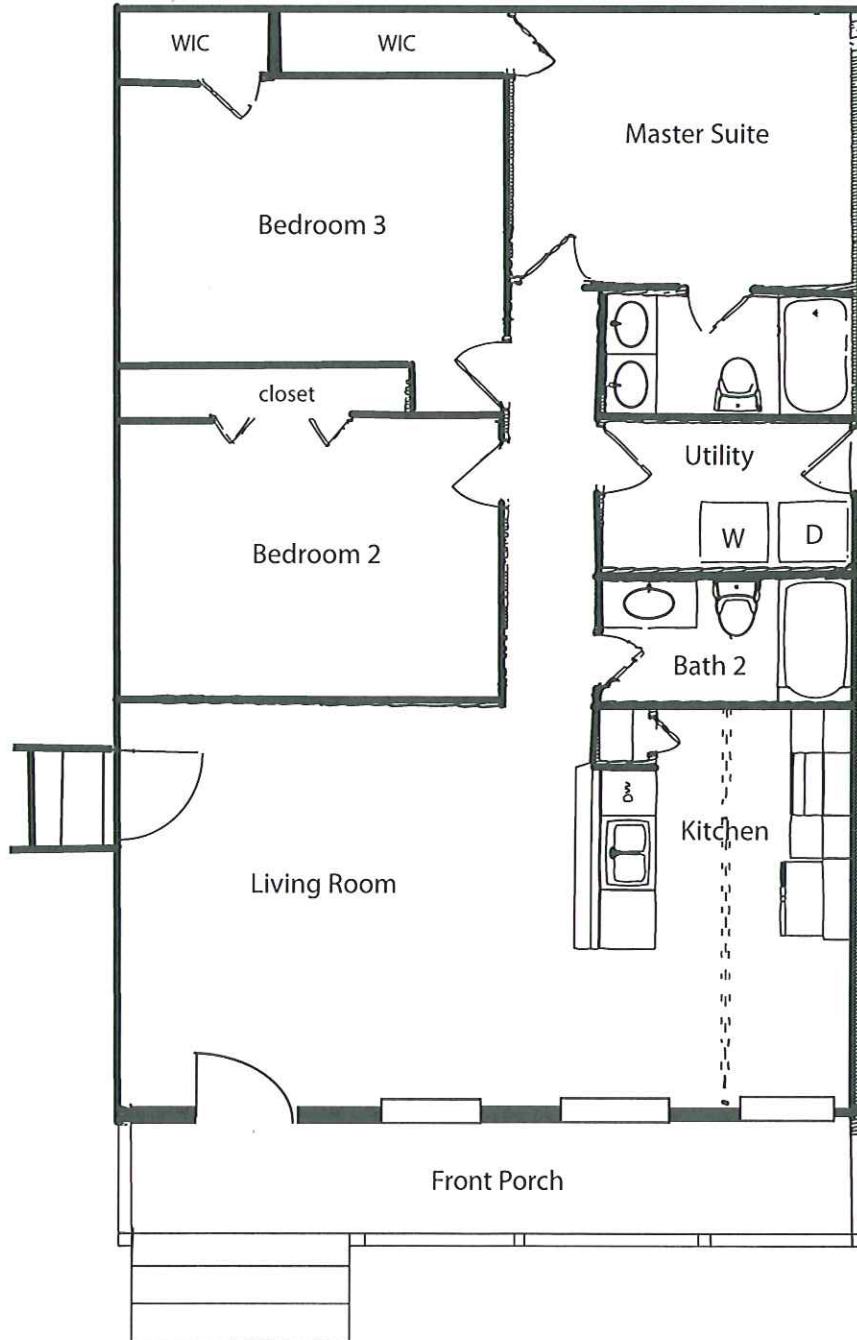


**LANDCRAFT
H O M E S**

www.landcrafthomes.com
(504) 237-9634 (985) 651-3007

Living Sqft. 1350B
Covered area sqft. 200
Total 1550 Sqft.
3 Bedrooms 2 Baths

Filmore





Vicksburg



**LANDCRAFT
H O M E S**

www.landcrafthomes.com

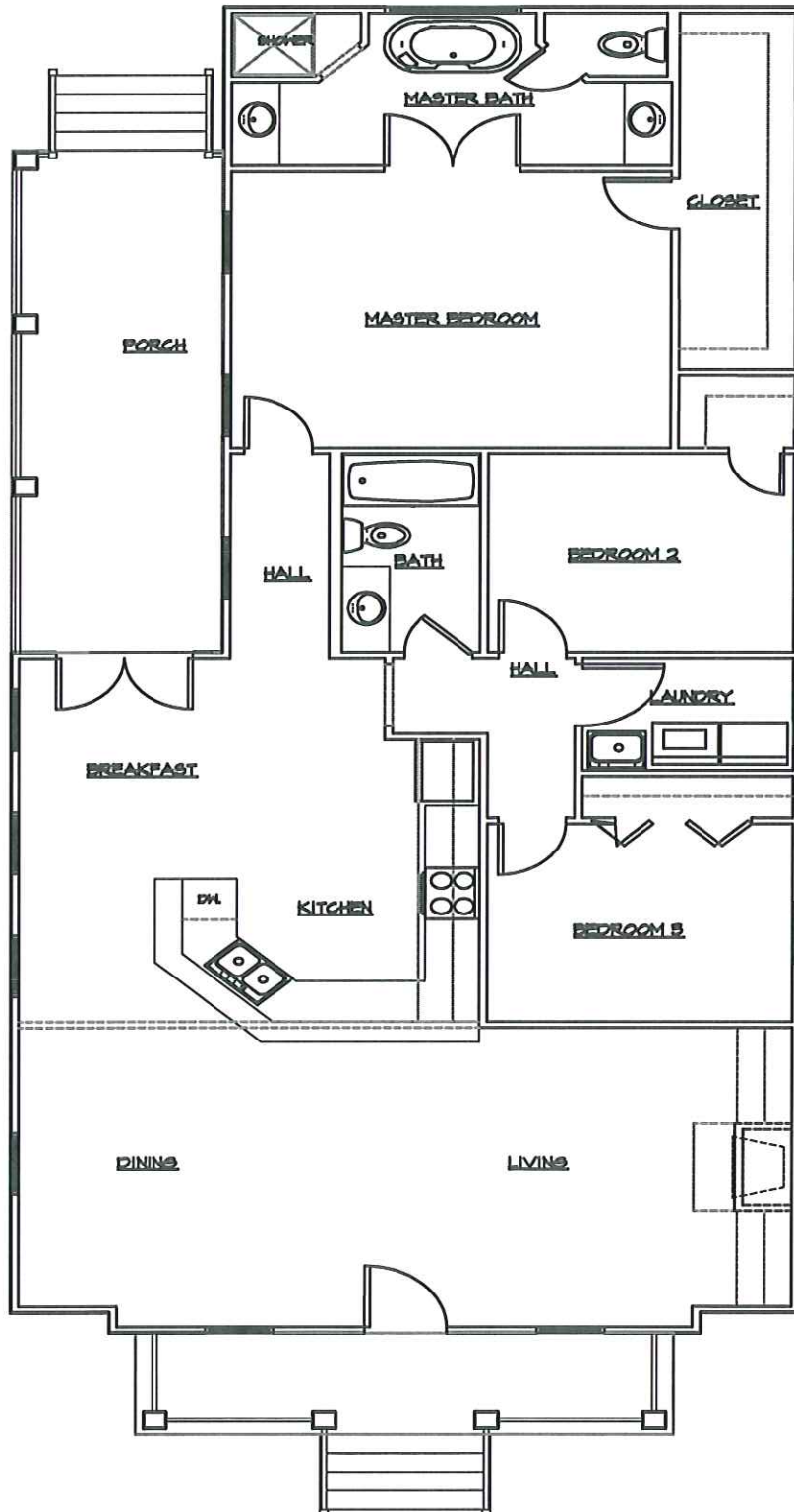
(504) 237-9634 (985) 651-3007

Living Sqft. 1633
Front Porch 100
Back Deck 190
Total 1923 Sqft.
3 Bedrooms 2 Baths



The drawings depicting the outside of these homes may vary slightly. The layouts and sizes indicated on the floor plans are approximate, and may also vary slightly. Specifications, products, and prices are subject to change without notice.

Vicksburg





Vicksburg Regal



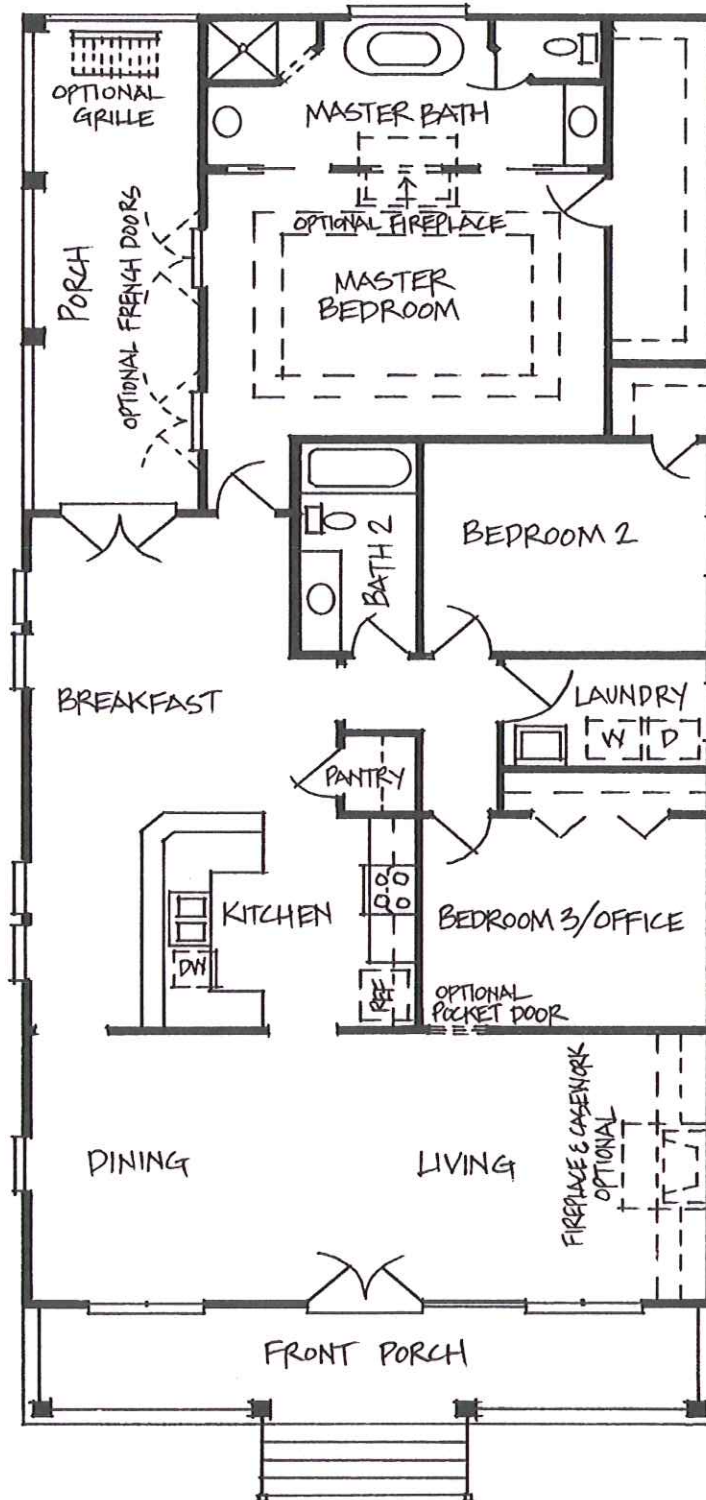
**LANDCRAFT
H O M E S**
www.landcrafthomes.com
(504) 237-9634 (985) 651-3007

Living Sqft. 1750
Front Porch 219
Back Deck 151
Total 2120 Sqft.
3 Bedrooms 2 Baths



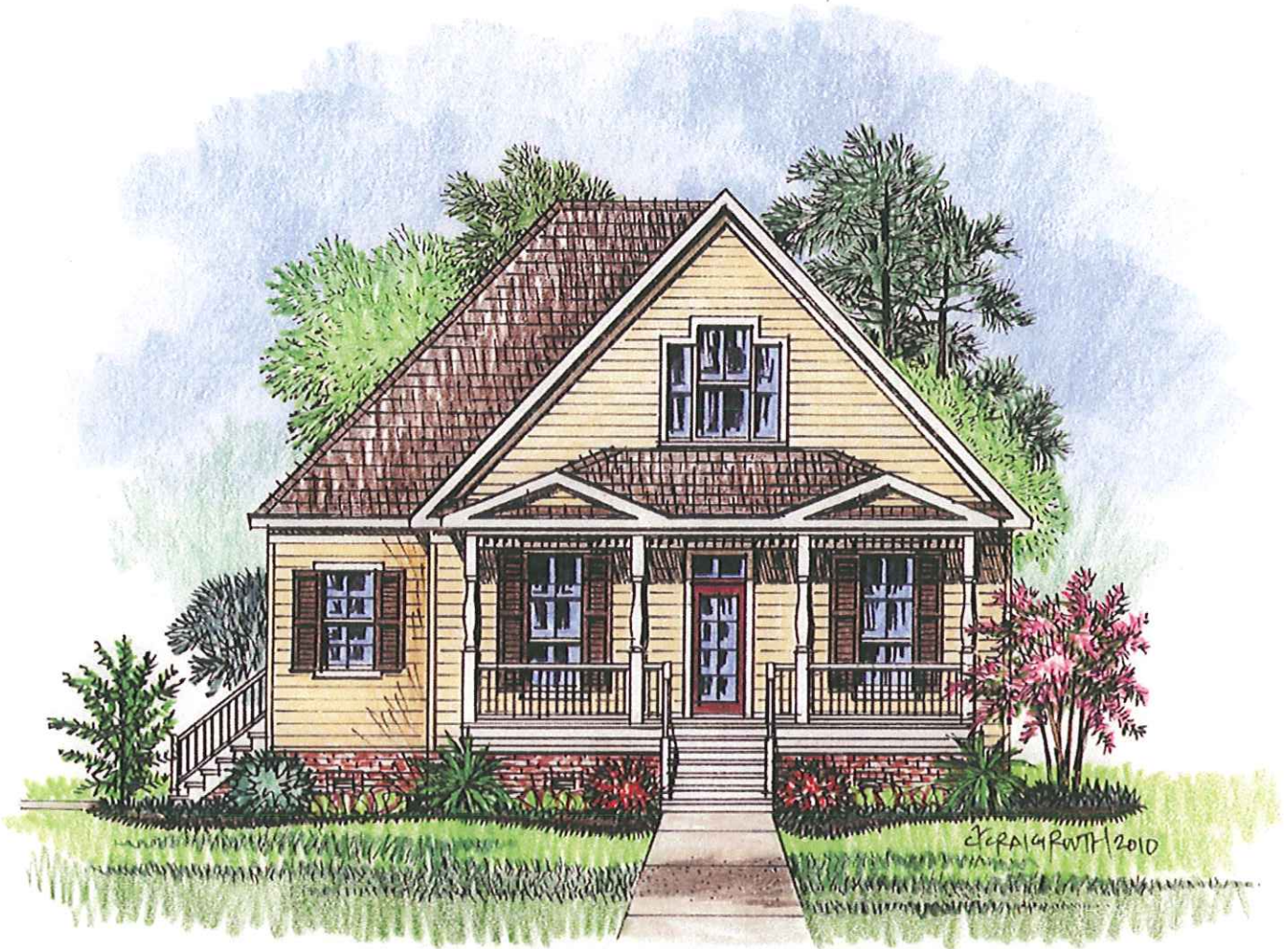
The drawings depicting the outside of these homes may vary slightly. The layouts and sizes indicated on the floor plans are approximate, and may also vary slightly. Specifications, products, and prices are subject to change without notice.

Vicksburg Regal





St. Charles



**LANDCRAFT
H O M E S**

www.landcrafthomes.com

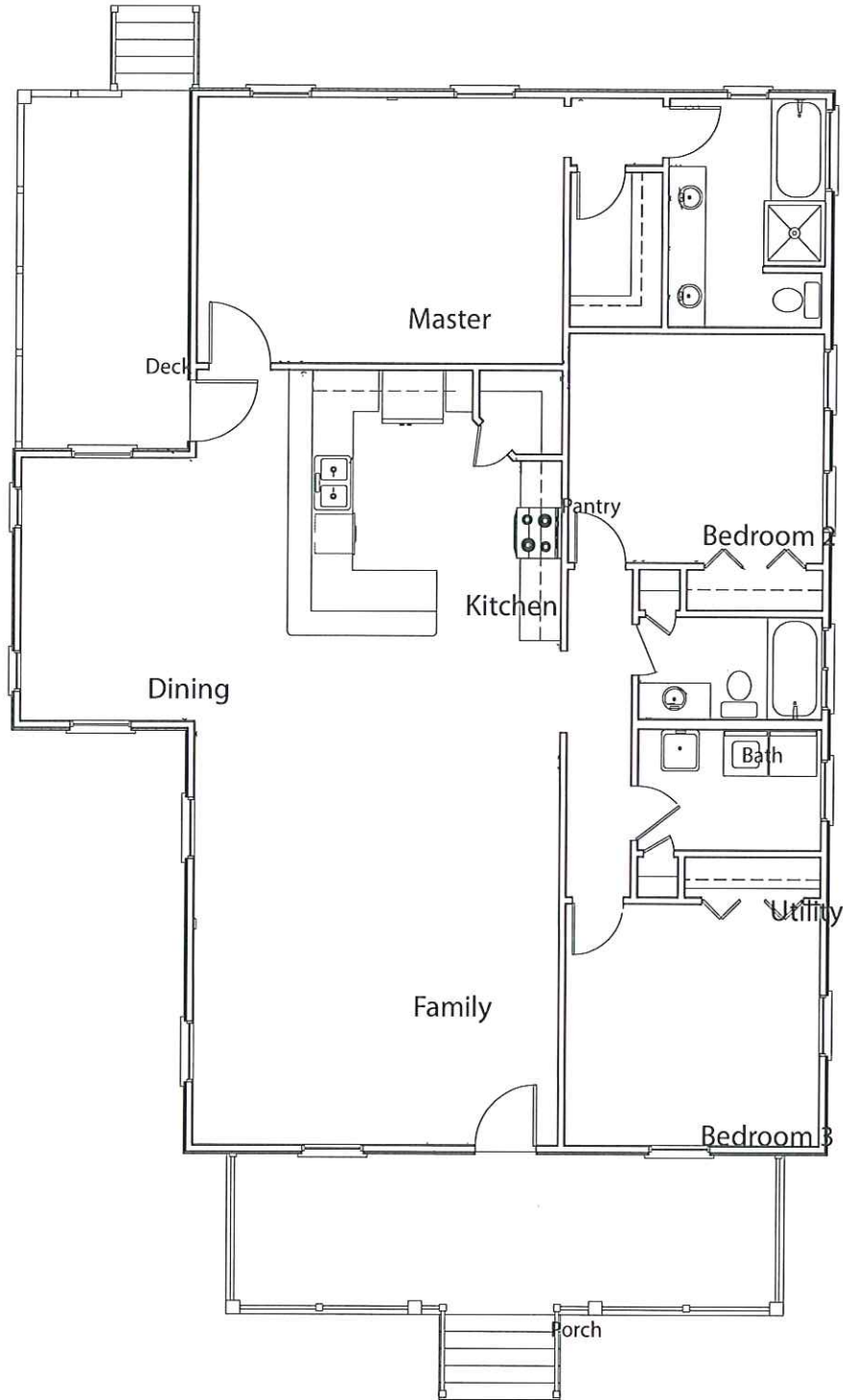
(504) 237-9634 (985) 651-3007

Living Sqft. 1750
Front Porch 219
Back Deck 151
Total 2120 Sqft.
3 Bedrooms 2 Baths



The drawings depicting the outside of these homes may vary slightly. The layouts and sizes indicated on the floor plans are approximate, and may also vary slightly. Specifications, products, and prices are subject to change without notice.

St. Charles





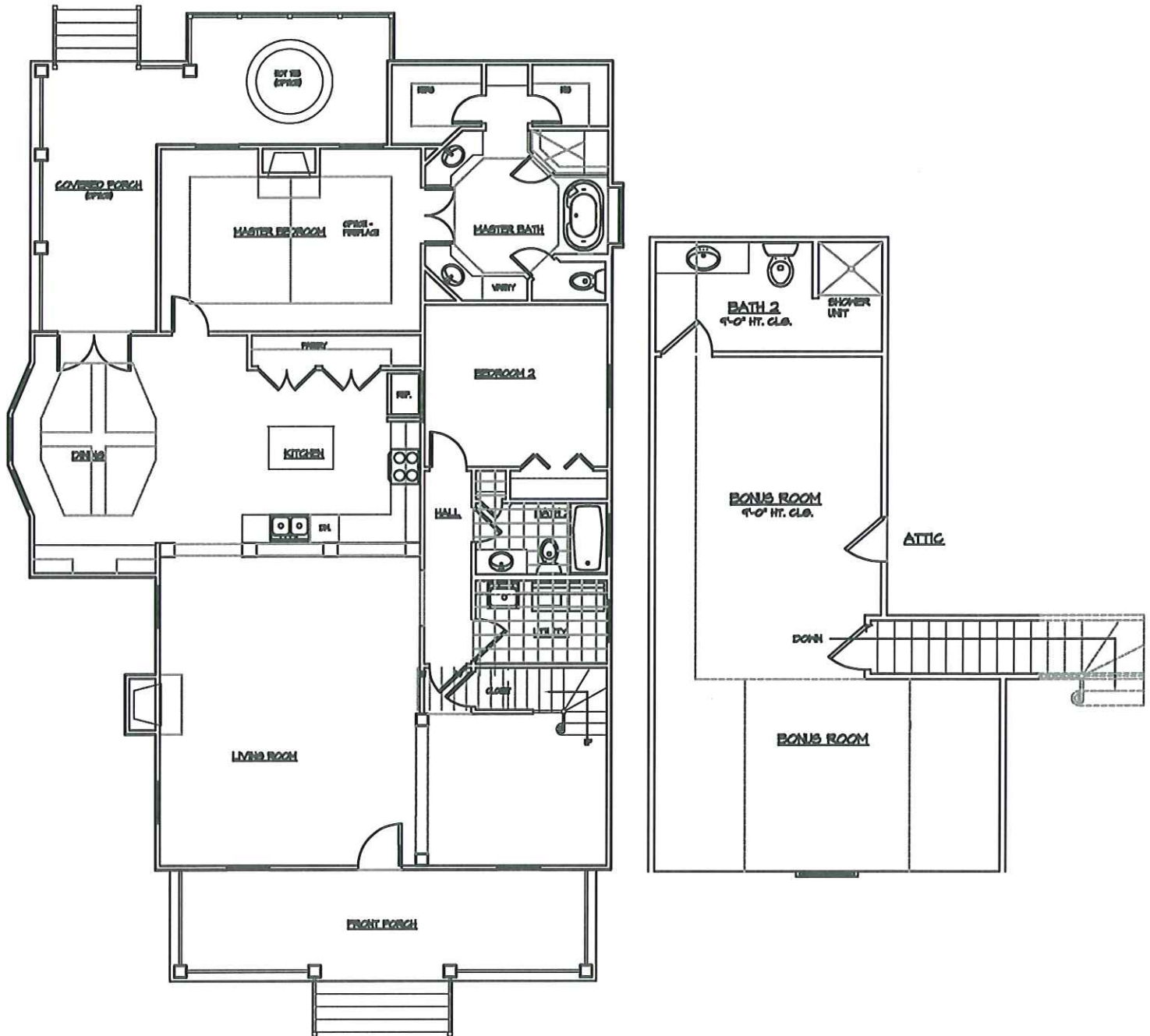
St. Charles Regal



**LANDCRAFT
H O M E S**
www.landcrafthomes.com
(504) 237-9634 (985) 651-3007

Living Sqft. 1895
Front Porch 235
Back Deck 315
Total 2445 Sqft.
3 Bedrooms 2 Baths
2nd Floor option 486
with optional 4th Bedroom
Total 2928 Sqft.

St. Charles Regal



The drawings depicting the outside of these homes may vary slightly. The layouts and sizes indicated on the floor plans are approximate, and may also vary slightly. Specifications, products, and prices are subject to change without notice.



Uptowner



**LANDCRAFT
H O M E S**

www.landcrafthomes.com

(504) 237-9634 (985) 651-3007

Living Sqft. 1802

Front Porch 176

Back Deck 209

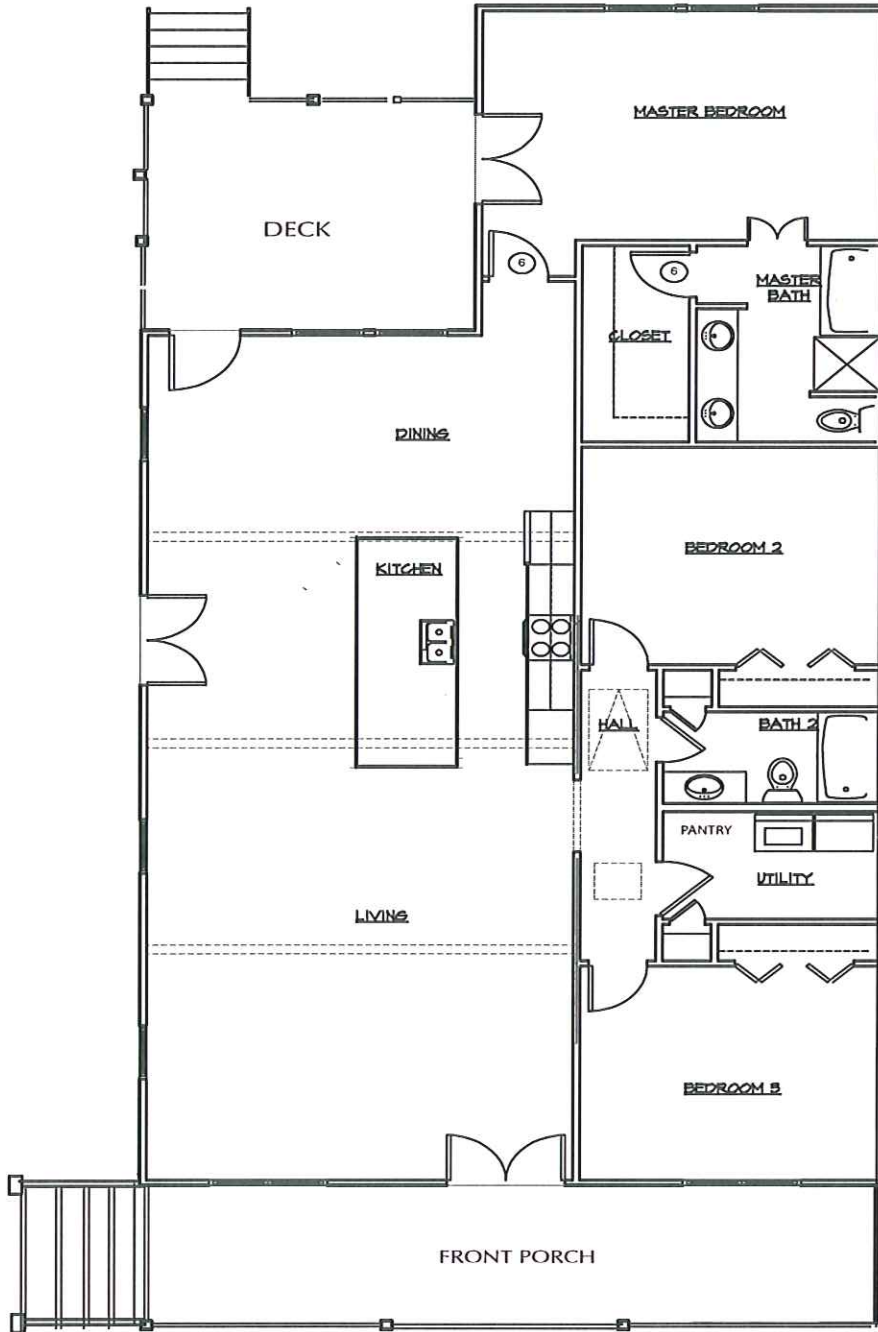
Total 2185 Sqft.

3 Bedrooms 2 Baths



The drawings depicting the outside of these homes may vary slightly. The layouts and sizes indicated on the floor plans are approximate, and may also vary slightly. Specifications, products, and prices are subject to change without notice.

Uptowner





Pontchartrain

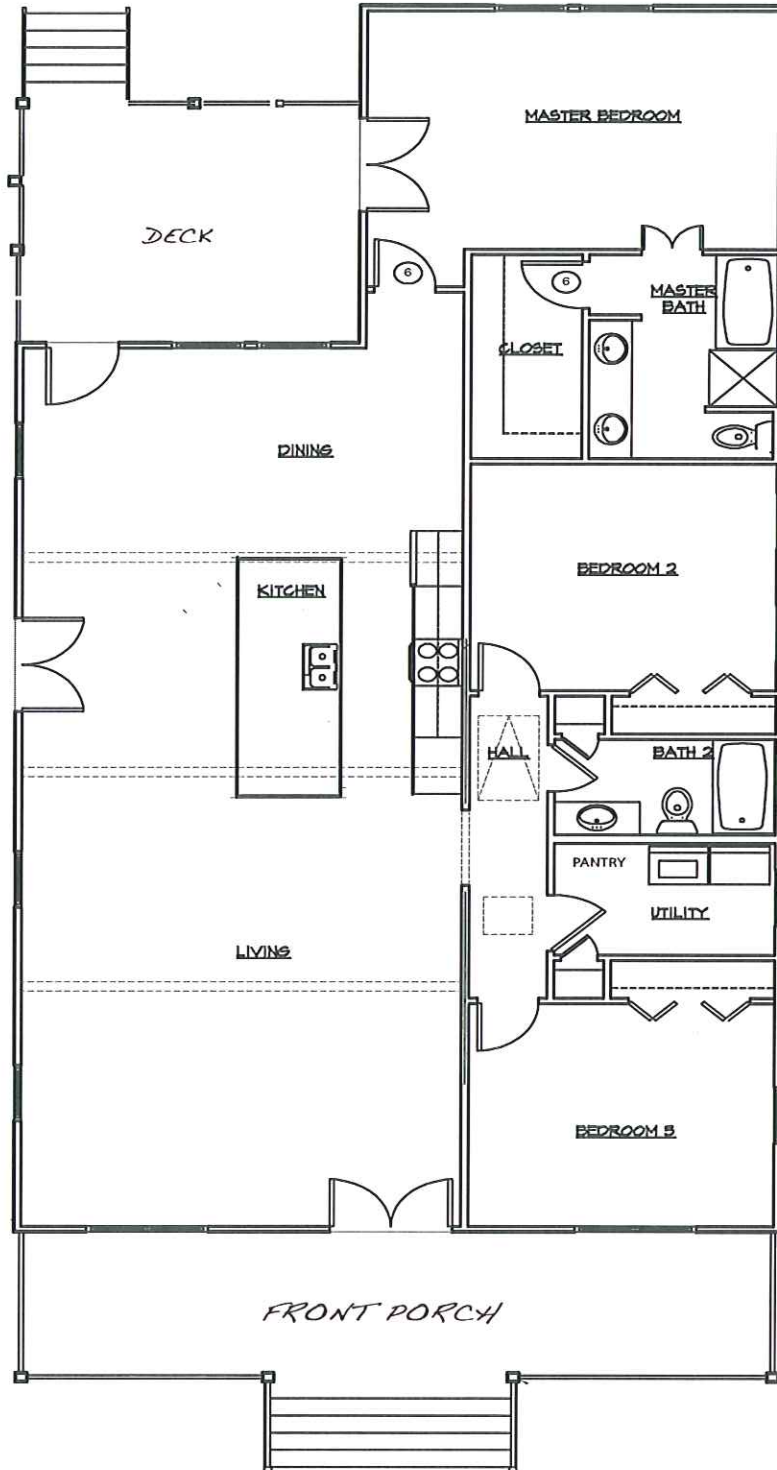




**LANDCRAFT
HOMES**
www.landcrafthomes.com
(504) 237-9634 (985) 651-3007

Living Sqft. 1800
Front Porch 176
Back Deck 209
Total Sqft. 2185
3 Bedrooms 2 Baths

Pontchartrain





Louisville



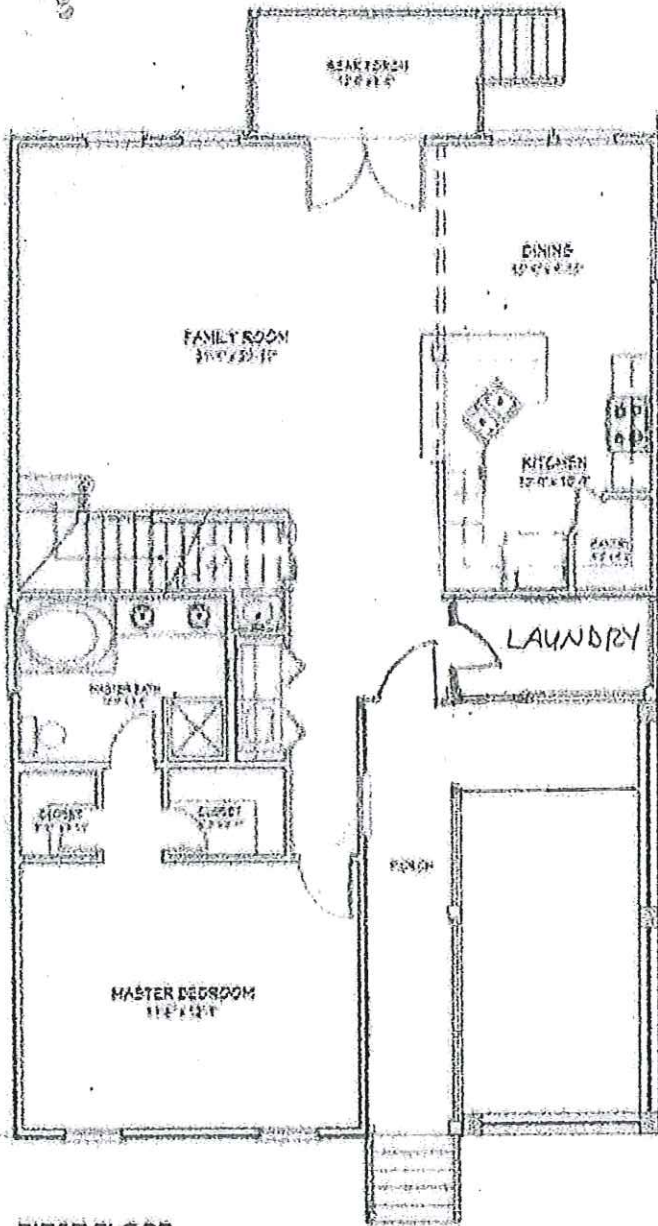
**LANDCRAFT
H O M E S**
www.landcrafthomes.com
(504) 237-9634 (985) 651-3007

Living Sqft. 1850
1st Floor 1185
2nd Floor 665
Front Porch 180
Back Porch 70
Total 2100 Sqft.
4 Bedrooms 2 1/2 Baths



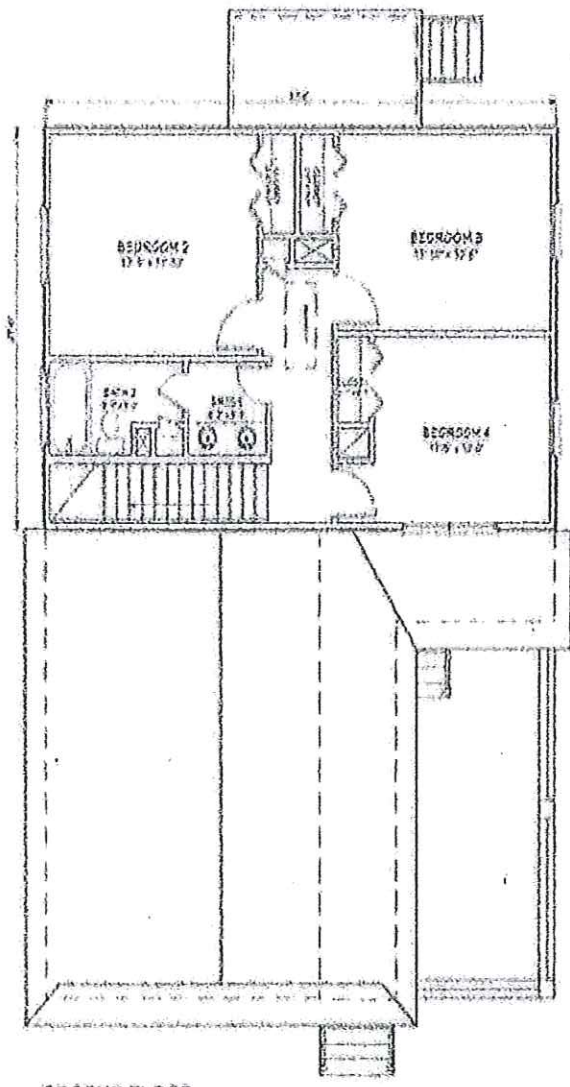
The drawings depicting the outside of these homes may vary slightly. The layouts and sizes indicated on the floor plans are approximate, and may also vary slightly. Specifications, products, and prices are subject to change without notice.

Louisville



FIRST FLOOR

SCALE 1/8" = 1'-0"



SECOND FLOOR

SCALE 1/8" = 1'-0"



Louisville Regal



**LANDCRAFT
H O M E S**

www.landcrafthomes.com

(504) 237-9634 (985) 651-3007

Living Sqft. 2150

1st Floor 1376

2nd Floor 775

Front Porch 149

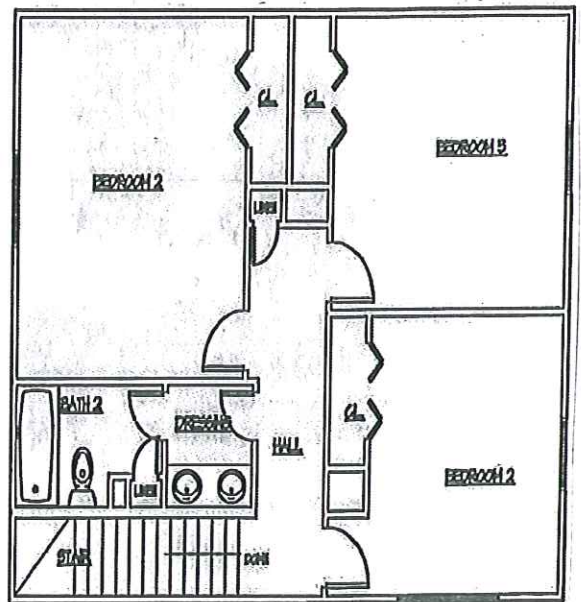
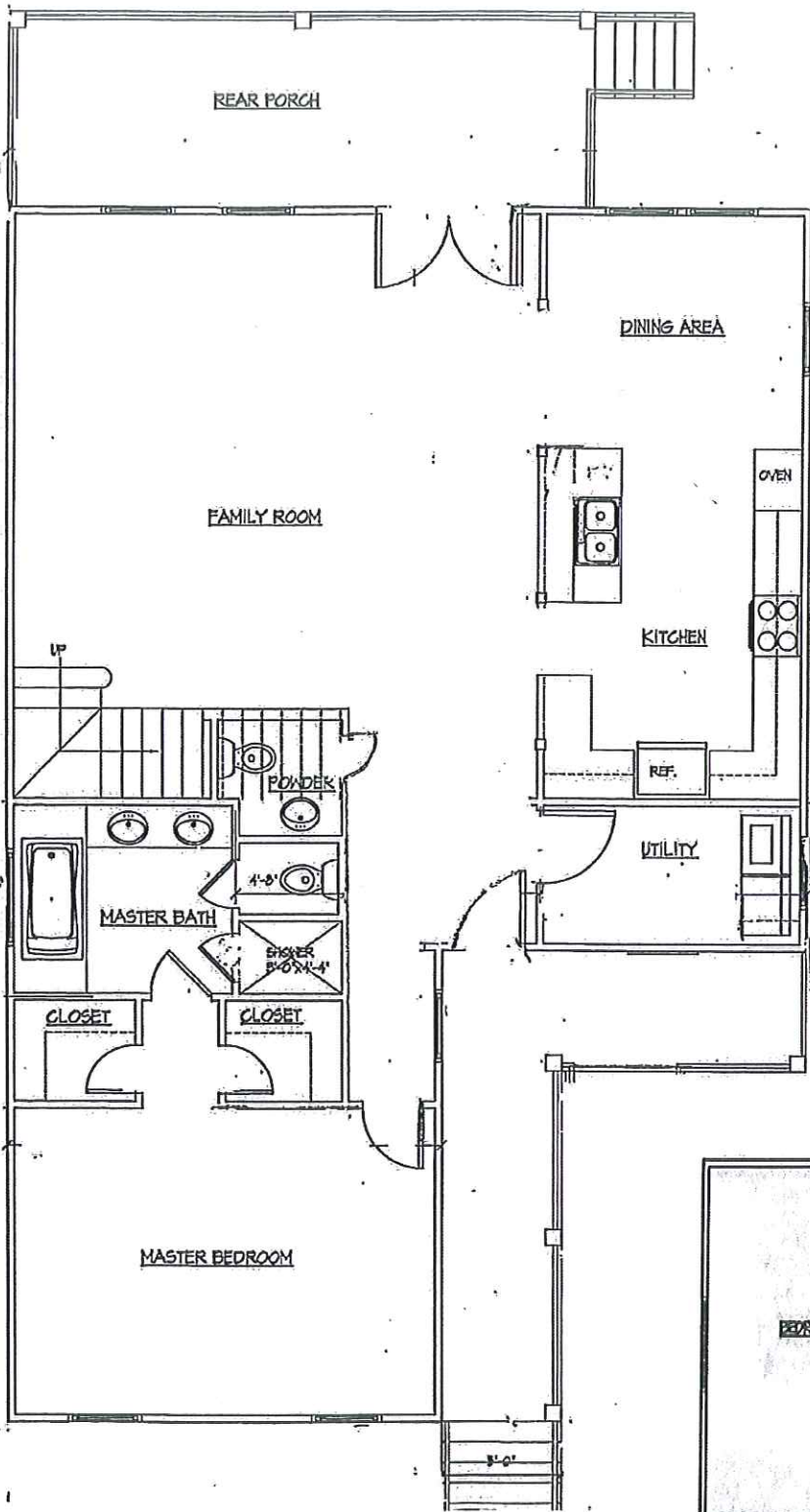
Back Porch 195

Total 2495

4 Bedrooms 2 1/2 Baths



The drawings depicting the outside of these homes may vary slightly. The layouts and sizes indicated on the floor plans are approximate, and may also vary slightly. Specifications, products, and prices are subject to change without notice.





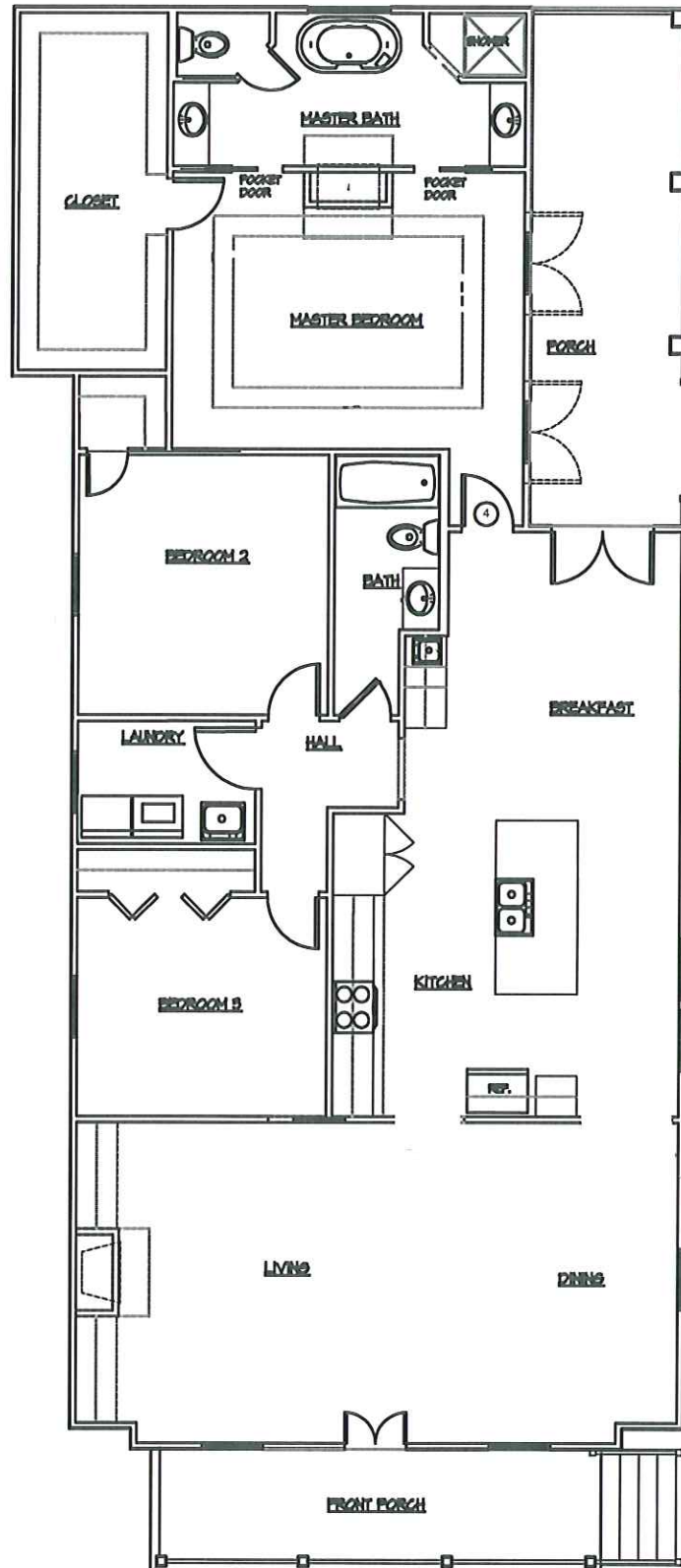
Laneville



**LANDCRAFT
H O M E S**
www.landcrafthomes.com
(504) 237-9634 (985) 651-3007

Living Sqft. 1967
Front Porch 132
Back Deck 196
Total Sqft. 2295
3 Bedrooms 2 Baths

Laneville





Bellaire



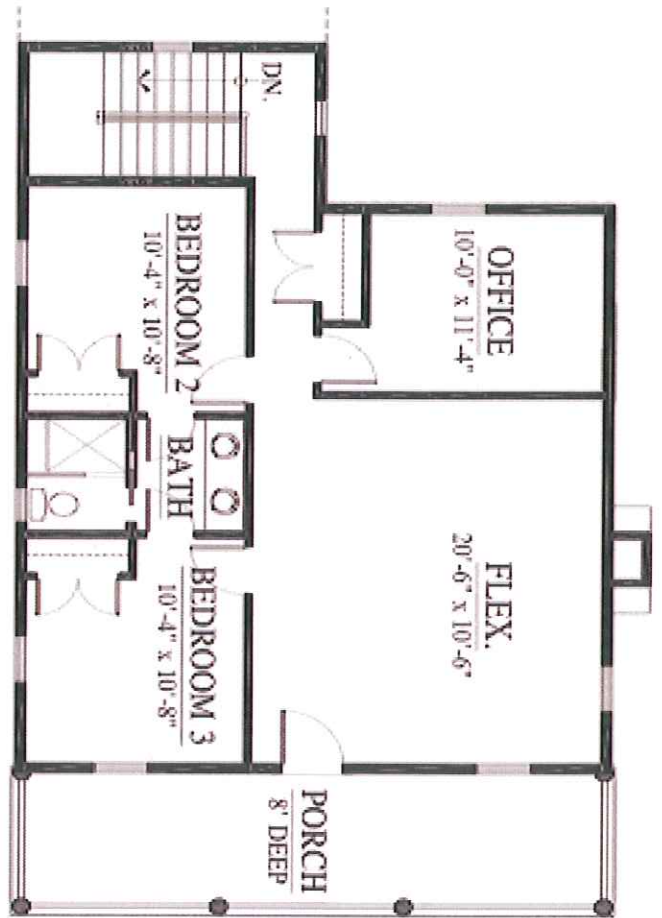
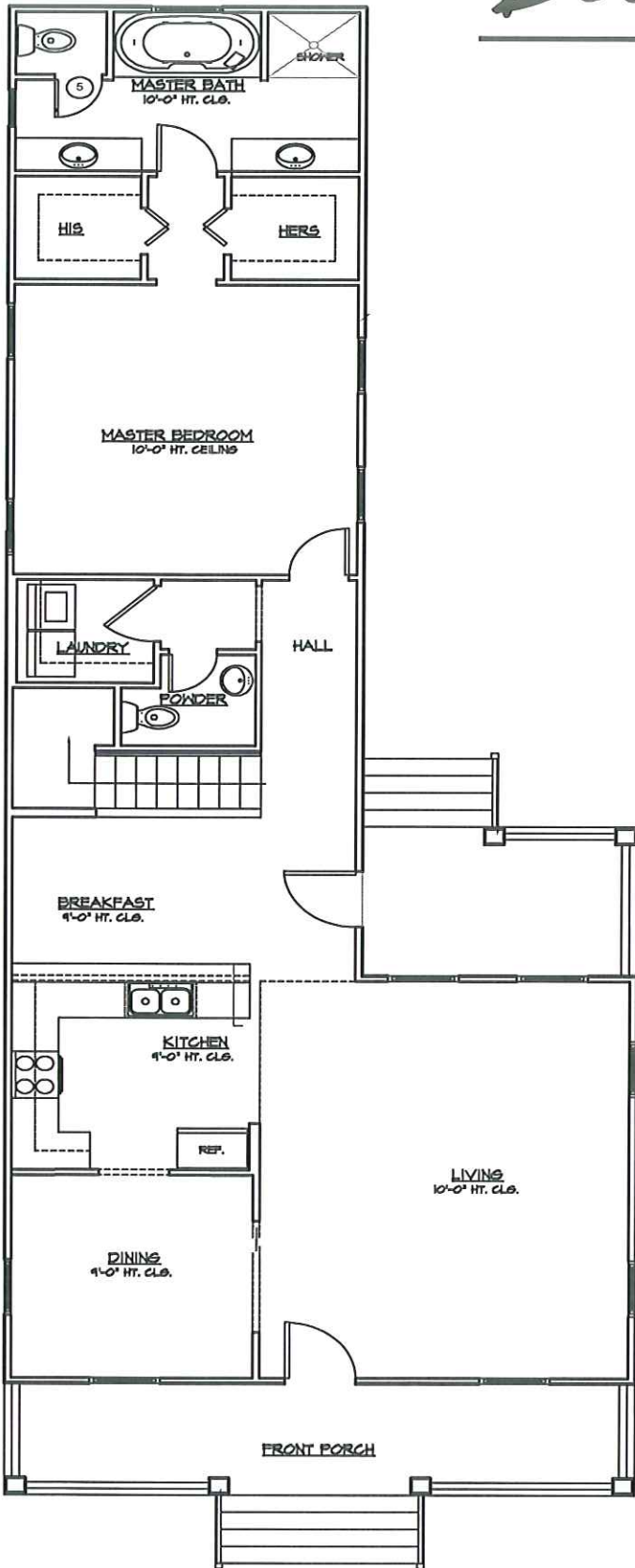
**LANDCRAFT
H O M E S**
www.landcrafthomes.com
(504) 237-9634 (985) 651-3007

Living Sqft. 2200
1st Floor 1356 2nd Floor 844
Front Porch 300 Back Porch 100
Total 2600 Sqft.
3 or 4 Bedrooms plus optional flex space
2 1/2 Baths

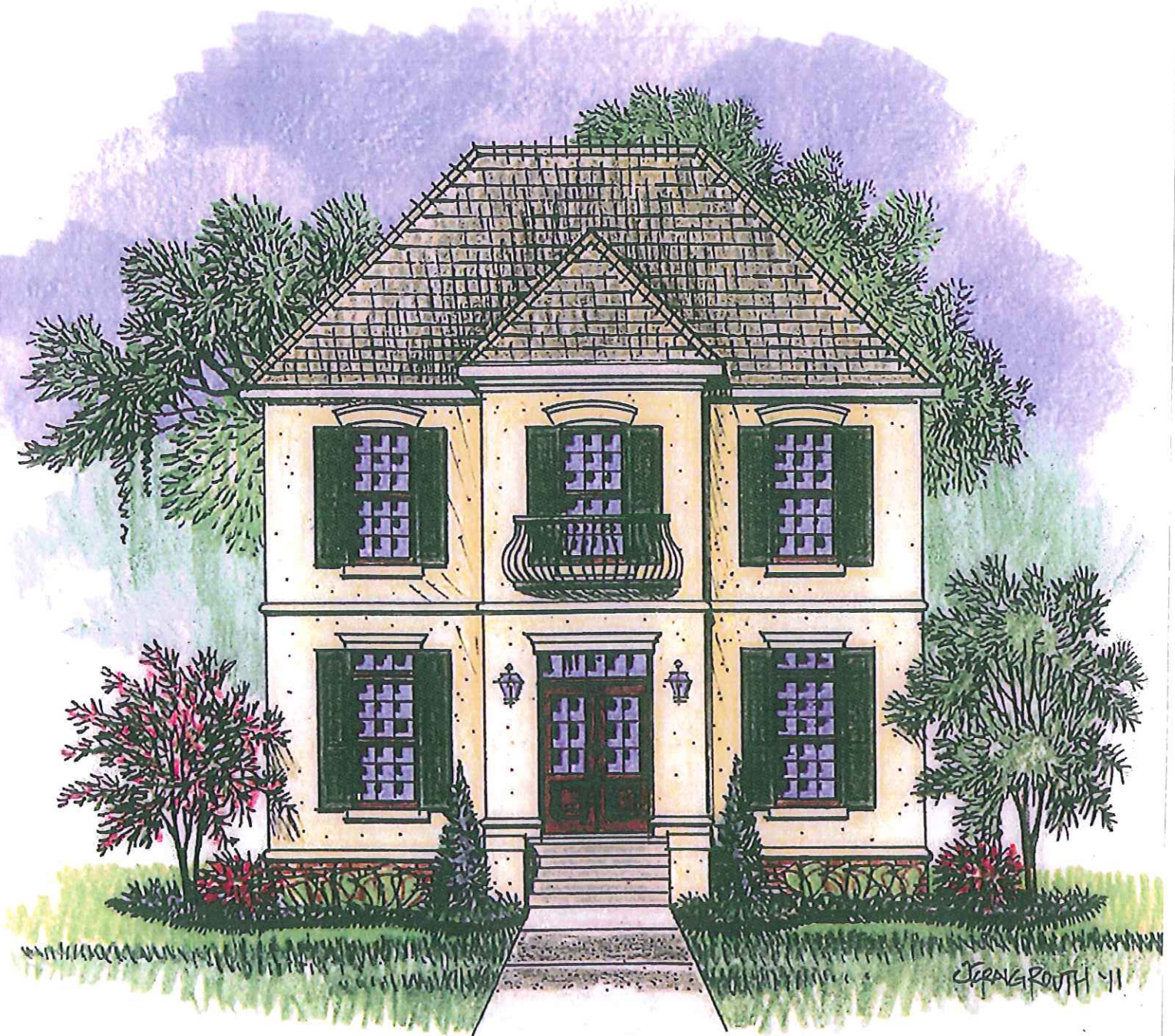


The drawings depicting the outside of these homes may vary slightly. The layouts and sizes indicated on the floor plans are approximate, and may also vary slightly. Specifications, products, and prices are subject to change without notice.

Bellaire

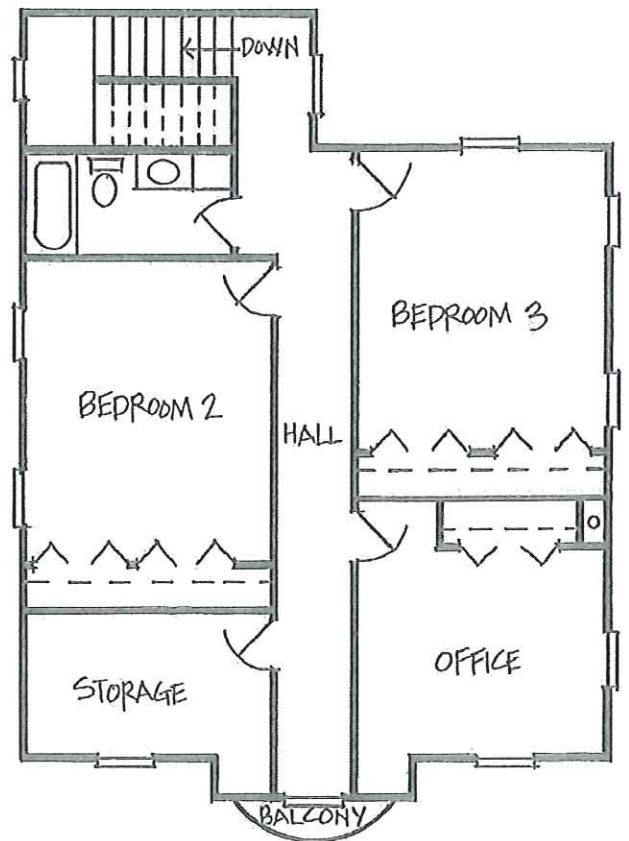
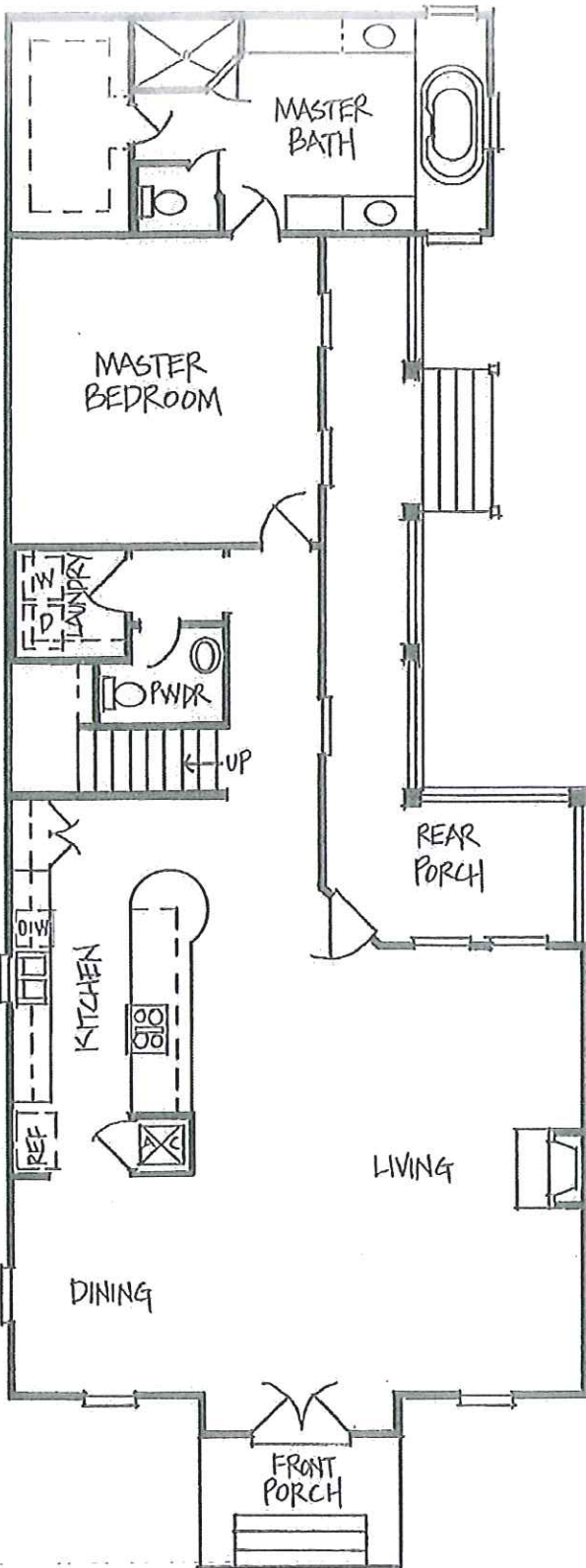


Bancroft



Living Sqft. 2670
Porch & Deck 210 Sqft
Total 2880
4 Bedrooms 2 ½ Baths

Bancroft





Drive by these quality homes that Landcraft has recently built:

Lakeview:

6146 Louisville St.
The "Louisville"

6480 Louisville St.
The "Laneville"

6724 Louisville St.
The "Louisville Regal"

6735 Louis XIV St.
The "Bellaire"

5889 Marcia Ave.
The "Pontchartrain"

222 Stafford St.
The "Vicksburg"

6336 Canal St.
The "St. Charles Regal"

Landcraft Homes Model Home & Sales Office

Old Metairie:

308 East Maple Ridge Dr.
The "St. Charles"

710 Ridgewood Dr.
The "St. Charles"



LANDCRAFT OWNED LOTS

#	STREET	WIDTH	DEPTH
6340	COLBERT	50	129
6348	COLBERT	50	129
7017	LOUISVILLE	50	136
7030	LOUIS XIV	50	136
7020	MEMPHIS	63	107
6040	MILNE	41	120
6236	MILNE	50	117
216	STAFFORD	70	120

INDUSTRY PROFILE

LANDCRAFT HOMES

Celebrating 15 Years of Building and Developing throughout the River Parishes

Cited in *Professional Builder Magazine* in 2005 as a leader in the top 75 U.S. housing markets, Landcraft Homes is currently celebrating its 15th anniversary in business.

The largest residential builder in the River Parishes and one of the largest in the state, Landcraft has built homes in many well-known South Louisiana communities such as Palmetto South, Cole's Landing, Bellevue Lakes, Belle Terre, River Oaks, Riverwood, Country Cottage, Summerlin Lake, Ashton Plantation and Highland Oaks.

Builder/developer Joseph Scontrino is president of both

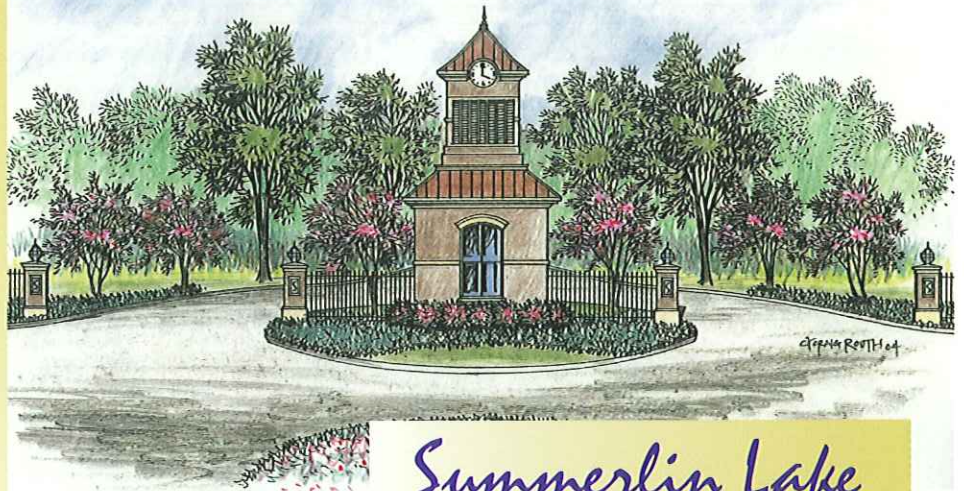


Attention to detail and innovative interior and exterior designs are standard fare at Landcraft Homes.

“Our commitment has been to provide our customers an exceptional home with incomparable design and value.”

Joseph M. Scontrino
President
LANDCRAFT HOMES

Affordable communities in the River Parishes, like Summerlin Lake, are a great new choice for homeowners.



Summerlin Lake

Landcraft Homes and Riverwood Development Corporation. From the outset, his goal has always been to build homes of lasting value.

Landcraft's custom home team has brought to life the cherished ideas of countless homeowners using their in-house design services. Buyers can also choose from an extensive library of plans ranging from \$90,000 to \$300,000. Their imaginative floor plans and striking exteriors offer state-of-the-art functionality and uncompromising value, whatever the price.

Attention to detail and concern for customer satisfaction are evident. The Landcraft construction personnel and sales team are well-trained and genuinely interested in

giving each buyer a satisfying home building experience before, during and after the sale.

Scontrino's newest planned community developments are strategically located in the Saints Parishes and surrounding areas. The newest, Summerlin Lake and Cole's Landing, are conveniently located near shopping, schools, restaurants and entertainment. Easy access to commuter arteries, emphasis on quality of life, a sense of community involvement and neighborhood recreational amenities (like jogging trails and tranquil lake views) make them both excellent choices for new homeowners. Local residents and New Orleanians who are looking for both affordability and a more relaxed lifestyle should undoubtedly

consider these neighborhoods for their families.

“Our commitment has been to provide our customers an exceptional home with incomparable design and value,” states Joey Scontrino. “At Landcraft, we consider this not just buzz words and filler, but truly our philosophy and course of business.” Their tremendous success and satisfied buyers in the River Parishes area have unquestionably proven the words accurate. ■

