

Minnesota  
 Fillmore  
 Report ID: FSA-156EZ

U.S. Department of Agriculture  
 Farm Service Agency  
 Abbreviated 156 Farm Record

FARM: 112  
 Prepared: 4/26/21 3:35 PM  
 Crop Year: 2021  
 Page: 1 of 2

DISCLAIMER: This is data extracted from the web farm database. Because of potential messaging failures in MIDAS, this data is not guaranteed to be an accurate and complete representation of data contained in the MIDAS system, which is the system of record for Farm Records.

Operator Name Farm Identifier

Farms Associated with Operator:

ARC/PLC G/I/F Eligibility: Eligible

CRP Contract Number(s): None

Farmland	Cropland	DCP Cropland	WBP	WRP	EWP	CRP Cropland	GRP	Farm Status	Number of Tracts
198.92	82.15	82.15	0.0	0.0	0.0	0.0	0.0	Active	1
State Conservation	Other Conservation	Effective DCP Cropland	Double Cropped	MPL/FWP	Native Sod				
0.0	0.0	82.15	0.0	0.0	0.0				

ARC/PLC

PLC CORN	ARC-CO SOYBN	ARC-IC NONE	PLC-Default NONE	ARC-CO-Default NONE	ARC-IC-Default NONE

Crop	Base Acreage	PLC Yield	CCC-505 CRP Reduction
CORN	36.45	167	0.00
SOYBEANS	12.15	44	0.00
Total Base Acres:	48.6		

Tract Number: 429 Description O4H NE4NW4 N2NE4 26, O3H SE4SE4 S2NE4SE4 23 ARENDA

FSA Physical Location : Fillmore, MN ANSI Physical Location: Fillmore, MN

BIA Range Unit Number:

HEL Status: HEL: conservation system is being actively applied

Wetland Status: Tract does not contain a wetland

WL Violations: None

Farmland	Cropland	DCP Cropland	WBP	WRP	EWP	CRP Cropland	GRP
198.92	82.15	82.15	0.0	0.0	0.0	0.0	0.0
State Conservation	Other Conservation	Effective DCP Cropland	Double Cropped	MPL/FWP	Native Sod		
0.0	0.0	82.15	0.0	0.0	0.0		

Crop	Base Acreage	PLC Yield	CCC-505 CRP Reduction
CORN	36.45	167	0.00
SOYBEANS	12.15	44	0.00
Total Base Acres:	48.6		

Owners: NORDGAARD, ARDELL  
 SNACKENBERG, BARBARA L

DUNN, DIANNE M

# Farm 112

## Tract 429

2021 Program Year

Map Created April 07, 2021



- Unless otherwise noted:  
 Shares are 100% operator  
 Crops are non-irrigated  
 Corn = yellow for grain  
 Soybeans = common soybeans for grain  
 Wheat = HRS, HRW = Grain  
 Sunflower = Oil, Non-Oil = Grain  
 Oats and Barley = Spring for grain  
 Rye = for grain  
 Peas = process  
 Alfalfa, Mixed Forage AGM, GMA, IGS = for forage  
 Beans = Dry Edible  
 NAG = for GZ  
 Canola = Spring for seed

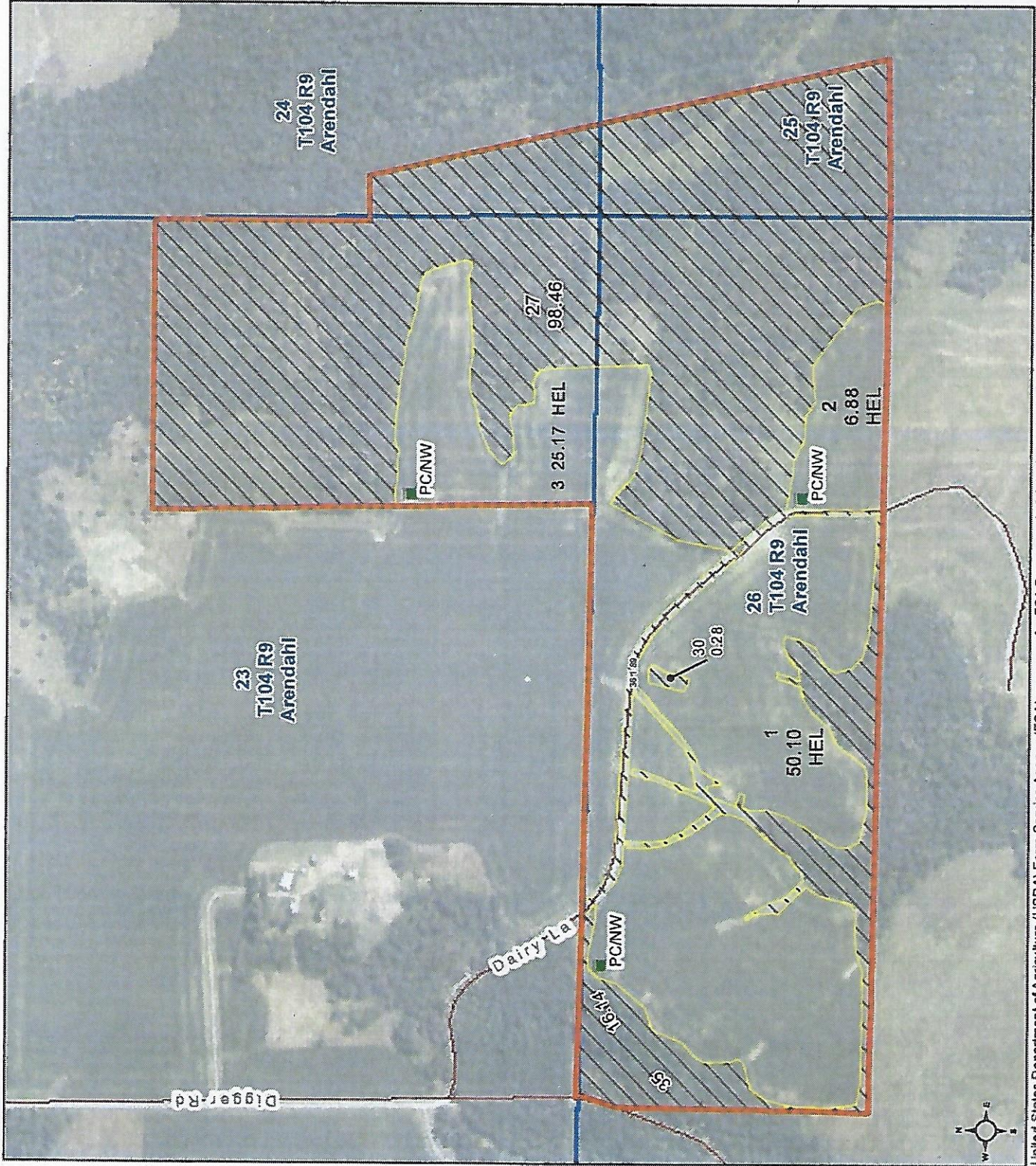
### Common Land Unit

- Non-Cropland
- Cropland
- Tract Boundary

### Wetland Determination Identifiers

- Restricted Use
- Limited Restrictions
- Exempt from Conservation
- Compliance Provisions

Tract Cropland Total: 82.15 acres



United States Department of Agriculture (USDA) Farm Service Agency (FSA) maps are for FSA Program administration only. This map does not represent a legal survey or reflect actual ownership; rather it depicts the information provided directly from the producer and/or National Agricultural Imagery Program (NAIP) imagery. The producer accepts the data 'as is' and assumes all risks associated with its use. USDA-FSA assumes no responsibility for actual or consequential damage incurred as a result of any user's reliance on this data outside FSA P programs. Wetland identifiers do not represent the size, shape, or specific determination of the area. Refer to your original determination (CPA-026 and attached maps) for exact boundaries and determinations or contact USDA Natural Resources Conservation Service (NRCS). This map displays the 2019 NAIP imagery.