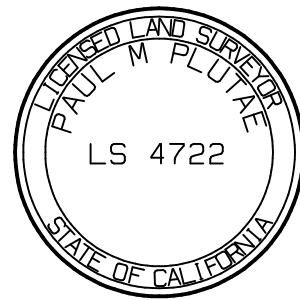


SCALES: 1" = 50'
1" = 70', 1" = 125'

SURVEYORS STATEMENT

THIS MAP CORRECTLY REPRESENTS A SURVEY MADE BY ME OR UNDER MY DIRECTION IN CONFORMANCE WITH THE REQUIREMENTS OF THE PROFESSIONAL LAND SURVEYORS ACT AT THE REQUEST OF xxxxxxxxxxxx IN SEPTEMBER OF 2011



PAUL M. PLUTAE
OCTOBER 4 2011
L.S. 4722

BASIS OF BEARINGS

THE BEARINGS SHOWN HEREON ARE BASED ON THE BEARING OF N 27° 43' 30" E OF THE WEST SIDELINE OF DEFREES STREET, NOW KNOWN AS SANBORN AVENUE AS SAID BEARING IS SHOWN ON THE MAP OF HYPERION TRACT RECORDED IN BOOK 16 PAGE 141 OF MAPS, RECORDS OF SAID COUNTY

SURVEYORS NOTE / COMMENTS

THIS SURVEY IS FILED TO SHOW THE MONUMENTATION OF THE LANDS SHOWN, FOUND OR SET, AND METHOD OF ESTABLISHMENT OF THE LANDS AS REQUIRED BY SECTION 8762 (b) (1) (2) (3) OF THE PROFESSIONAL LAND SURVEYORS ACT.

ALL SET MONUMENTS TAGGED LS 4722 UNLESS NOTED OTHERWISE

ONLY REJECTED MONUMENTS WILL BE CALLED OUT AS SUCH, EITHER BY A REJECTION NOTE OR WITH DIMENSIONS TO OR FROM A LINE OR CORNER. IF A MONUMENT IS BEING CALLED OFFSET TO A CORNER BUT REFERENCED TO A LINE, A DISTANCE AND DIRECTION WILL BE NOTED TO THE CORNER.

⊙ = FOUND OR SET MONUMENT AS NOTED.

RECORD OF SURVEY
IN THE CITY OF LOS ANGELES, COUNTY OF LOS ANGELES, STATE OF CALIFORNIA
BEING AN INITIAL SURVEY OF

LOT 9, BLOCK '4', CHILDS HEIGHTS, AS PER MAP RECORDED IN BOOK 39 PAGE 97 OF MISCELLANEOUS RECORDS, IN THE OFFICE OF THE COUNTY RECORDER OF SAID COUNTY.

MAP REFERENCES AND RECORDING TIME LINE

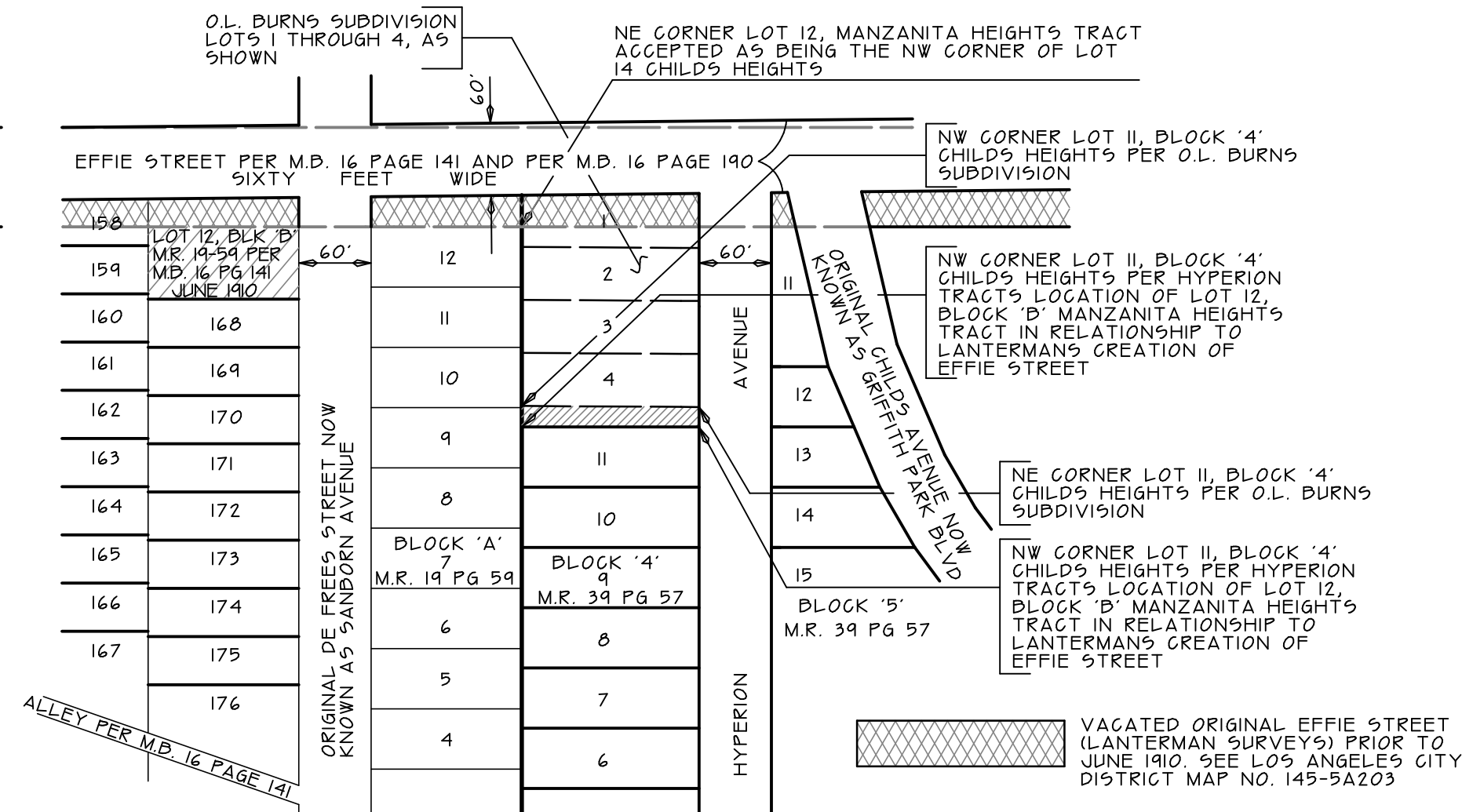
- MANZANITA HEIGHTS TRACT - M.R. 19 PAGE 59 - JUNE 1887
- CHILD HEIGHTS - M.R. 19 PAGE 59 - SEPTEMBER 1887
- HYPERION TRACT - M.B. 16 PAGE 141 - JUNE 1910
- O.L. BURNS SUBDIVISION - M.B. 16 PAGE 190 - JULY 1910

COUNTY SURVEYORS STATEMENT

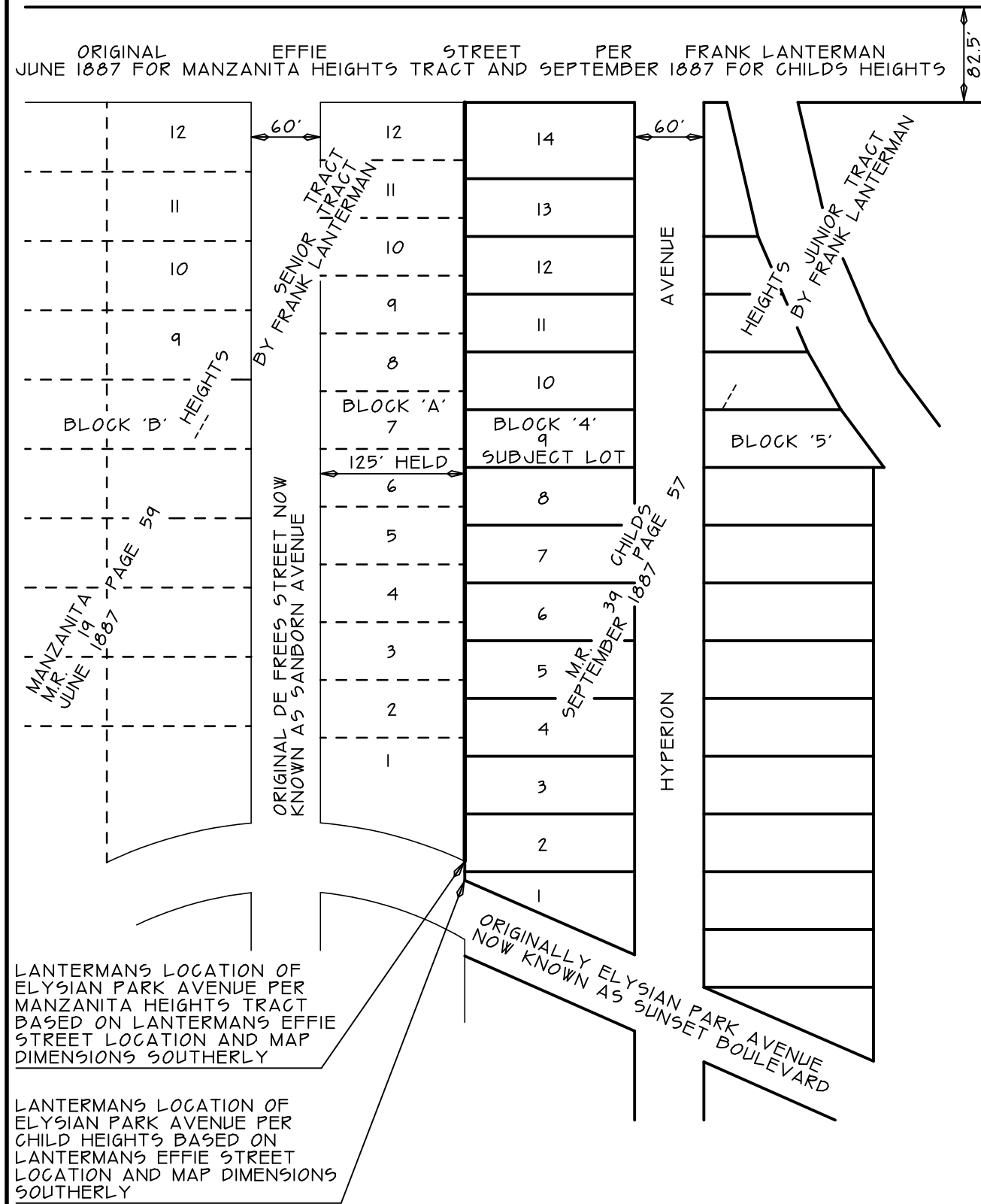
THIS MAP HAS BEEN EXAMINED IN ACCORDANCE WITH SECTION 8766 OF THE PROFESSIONAL LAND SURVEYORS ACT THIS

____ DAY OF _____ 2011

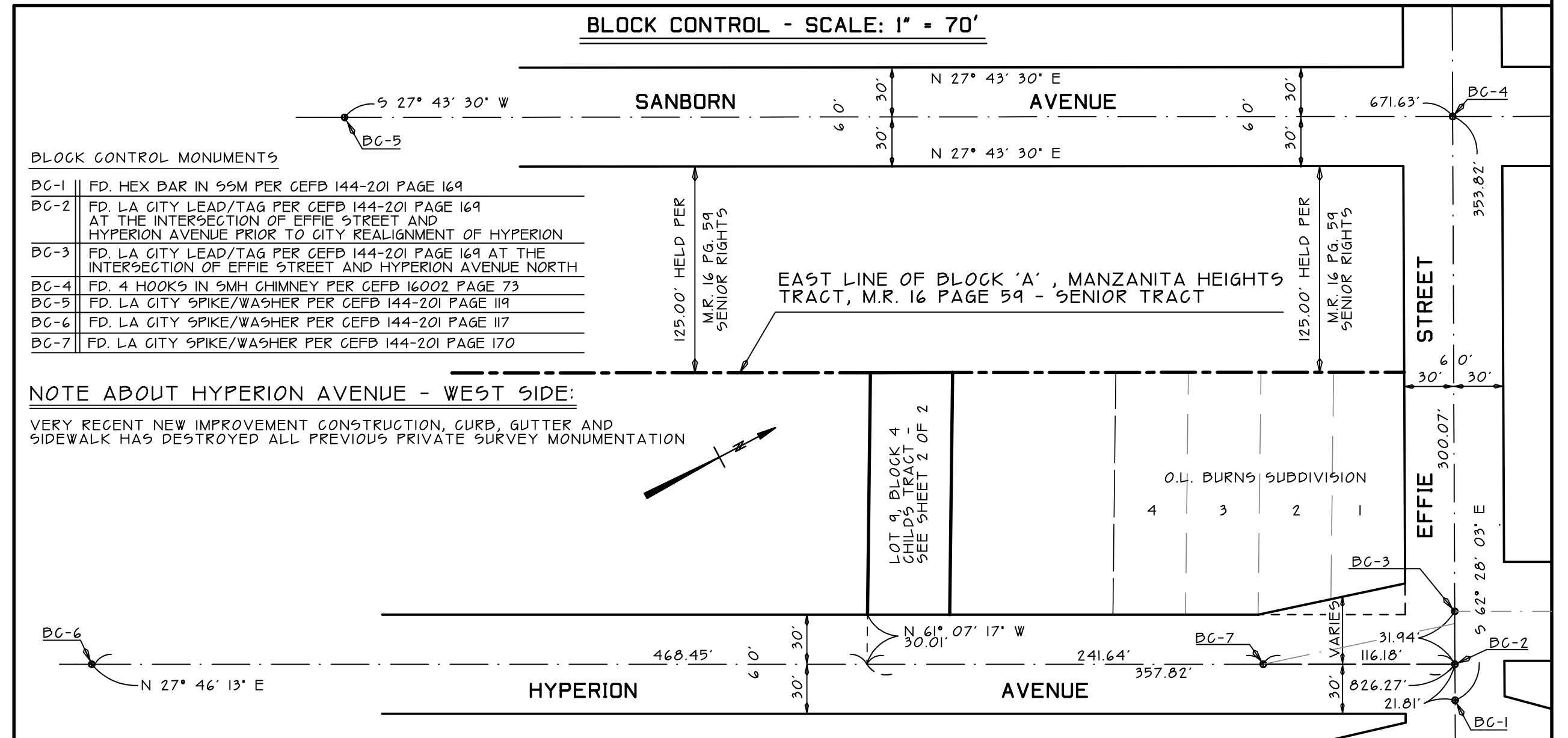
COUNTY SURVEYOR: _____
DEPUTY: _____



BLOCK DETAIL POST 1910 - SCALE: 1" = 125'



BLOCK DETAIL PRE 1910 - SCALE: 1" = 125'



PLOT: OCTOBER 4 2011

A.P.N. 5429-013-027
T.G.I. 594 - B 5