

## Flag

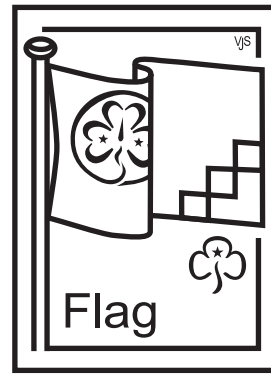
1. Know how to fold, hoist and lower the Guide flag. Demonstrate that you can do this in a sensible and respectful way.

2. Know how to tie the two knots needed to hoist a flag.

3. Know what the different parts of the World Flag represent. (Understand and colour in the World Badge Leaflet.)

4. Be part of a colour party on more than one occasion.

5. Make a mini flag, with a rope and toggle. Use it to practice folding and hoisting a flag.



## Flag

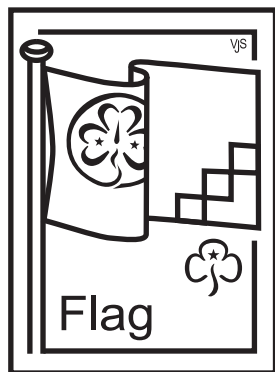
1. Know how to fold, hoist and lower the Guide flag. Demonstrate that you can do this in a sensible and respectful way.

2. Know how to tie the two knots needed to hoist a flag.

3. Know what the different parts of the World Flag represent. (Understand and colour in the World Badge Leaflet.)

4. Be part of a colour party on more than one occasion.

5. Make a mini flag, with a rope and toggle. Use it to practice folding and hoisting a flag.



## Flag

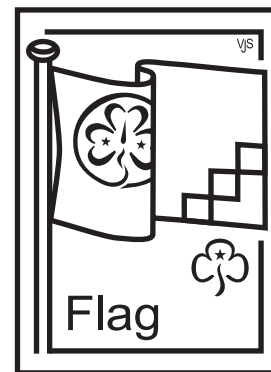
1. Know how to fold, hoist and lower the Guide flag. Demonstrate that you can do this in a sensible and respectful way.

2. Know how to tie the two knots needed to hoist a flag.

3. Know what the different parts of the World Flag represent. (Understand and colour in the World Badge Leaflet.)

4. Be part of a colour party on more than one occasion.

5. Make a mini flag, with a rope and toggle. Use it to practice folding and hoisting a flag.



## Flag

1. Know how to fold, hoist and lower the Guide flag. Demonstrate that you can do this in a sensible and respectful way.

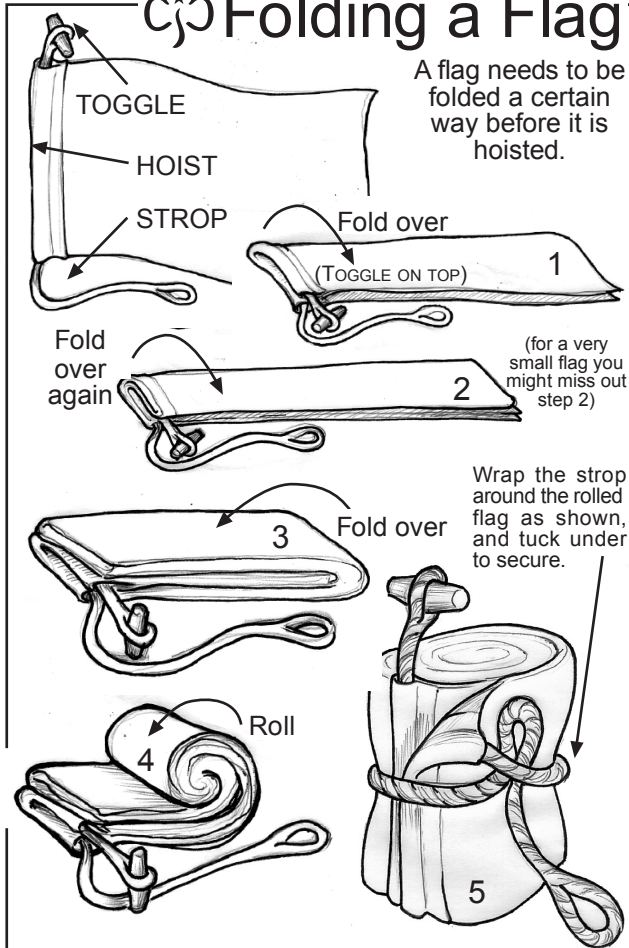
2. Know how to tie the two knots needed to hoist a flag.

3. Know what the different parts of the World Flag represent. (Understand and colour in the World Badge Leaflet.)

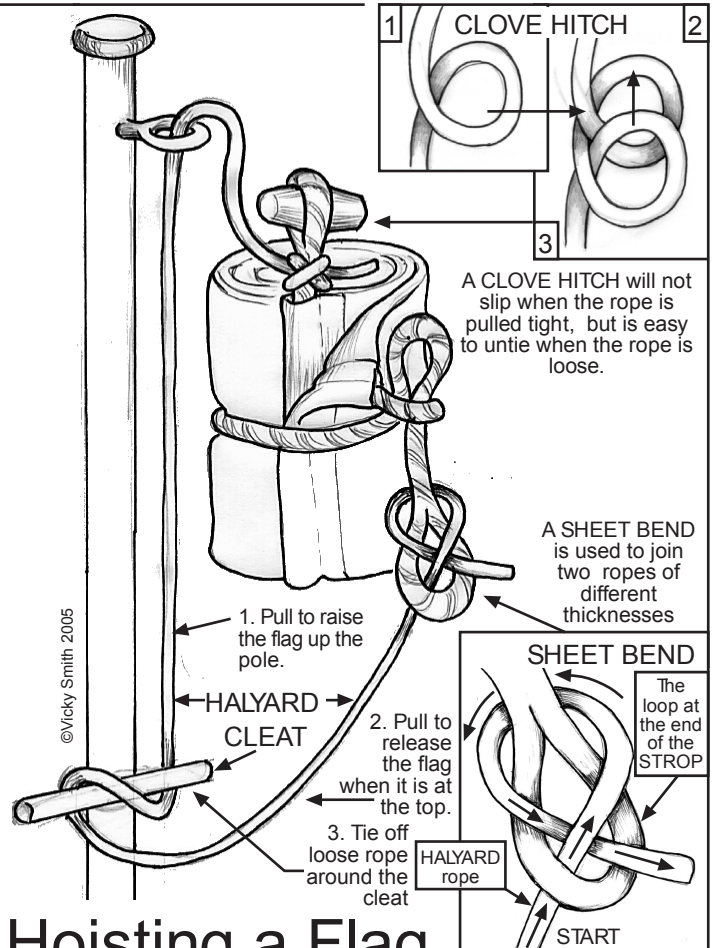
4. Be part of a colour party on more than one occasion.

5. Make a mini flag, with a rope and toggle. Use it to practice folding and hoisting a flag.

## Folding a Flag



A flag needs to be folded a certain way before it is hoisted.



## Hoisting a Flag



## The World Badge

This badge is used by Girl Guides and Girl Scouts all over the world.

## The World Badge

The golden yellow trefoil on the blue background... represents the sun shining over all the children of the world.

The three trefoil leaves...

represent the three parts of the Guide Promise.

The two stars...

represent the Promise and Law

The needle...

represents a compass needle showing us the way.

The flame...

represents the flame of the love for all humanity.

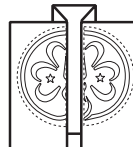
The outer circle...

represents our worldwide organisation called The World Association of Girl Guides and Girl Scouts known as W.A.G.G.G.S. There are more than 10 million members of WAGGGS - you are a member of the largest organisation for girls and women in the world!

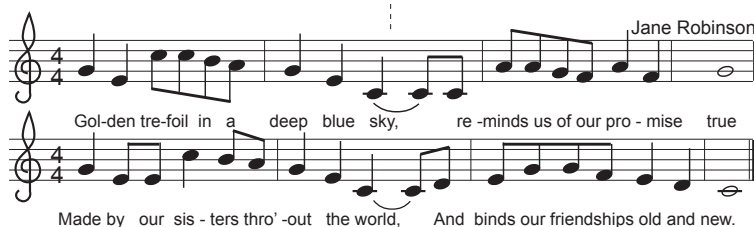
### World Flag Song

Golden trefoil in a deep blue sky,  
reminds us of our Promise true  
Made by our sisters throughout the  
world,  
and binds our friendships  
old and new.

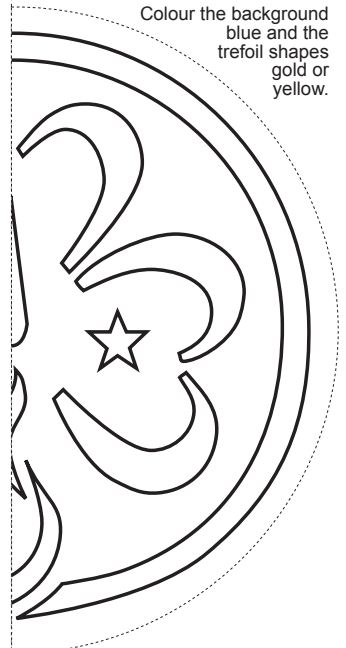
All members of WAGGGS can wear a World Badge - Ask your Guider how you can get one.



Colour in the World badge on this card, fold as shown, and keep it in your G File



Colour the background blue and the trefoil shapes gold or yellow.



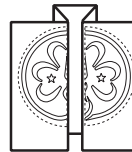


# The World Badge

The golden yellow trefoil on the blue background...  
represents the sun shining over all the children of the world.  
The three trefoil leaves...  
represent the three parts of the Guide Promise.  
The two stars...  
represent the Promise and Law  
The needle...  
represents a compass needle showing us the way.  
The flame...  
represents the flame of the love for all humanity.  
The outer circle...  
represents our worldwide organisation called  
The World Association of Girl Guides and Girl Scouts known as  
W.A.G.G.S. There are more than 10 million members of  
WAGGGS - you are a member of the largest organisation for  
girls and women in the world!

**World Flag Song**  
Golden trefoil in a deep blue sky,  
reminds us of our Promise true  
Made by our sisters throughout the  
world,  
and binds our friendships  
old and new.

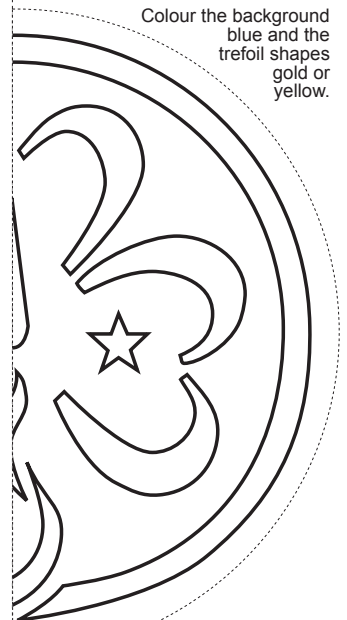
All members of WAGGGS can  
wear a World Badge - Ask your  
Guider how you can get one.



Colour in the  
World badge on  
this card, fold as  
shown, and  
keep it in your  
G File

**World Flag Song** Jane Robinson

Gol-den tre-foil in a deep blue sky, re-minds us of our pro-mise true  
Made by our sis-ters thro'-out the world, And binds our friendships old and new.



## The World Badge

This badge is used  
by Girl Guides and  
Girl Scouts all over  
the world.



Vicky Smith 2005

## Folding a Flag

A flag needs to be folded a certain way before it is hoisted.

**TOGGLE**  
**HOIST**  
**STROP**

1. Fold over (TOGGLE ON TOP)  
2. Fold over again  
3. Fold over  
4. Roll  
5. Wrap the strop around the rolled flag as shown, and tuck under to secure.

**CLOVE HITCH**  
A CLOVE HITCH will not slip when the rope is pulled tight, but is easy to untie when the rope is loose.

**SHEET BEND**  
A SHEET BEND is used to join two ropes of different thicknesses

**HALYARD CLEAT**  
1. Pull to raise the flag up the pole.  
2. Pull to release the flag when it is at the top.  
3. Tie off loose rope around the cleat

**HALYARD ROPE**  
**START**

## Hoisting a Flag