

BARREL

SHANDS

T.S.J.C.

Barrel Shank Drawing

Illustrations

- Page 1 Model 71/84 Mauser
German Model 88 Commission
Model 89 Belgium Mauser
Model 91 Argentina Mauser
- Page 2 Model 93, 94, 95 & 96 Mauser
Large Ring Model 98 Mauser
Model 24 Yugoslavian Mauser (M-98)
Mauser G 33-40
8MM Siamese M-98 Mauser
- Page 3 French Berthier 8MM Lebel Cal.
French MAS M-1936
Lee Enfield
Italian Carcano
Italian Youth Rifle
- Page 4 Model 91 Mosin Nagant
Japanese Type 38 & 44
Japanese Type 99
Greek Manlicher Schoenauer
German Model G-98/40
- Page 5 Model 1921 Spanish Destroyer Carbine
U.S. Krag Jorgensen
Norwegian Krag
Danish Krag
U.S. Springfield M-1903, 1903A3-A4 and Original
Newton Rifle
- Page 6 Model 30, 30S & 720 Remington
Model 1917 Enfield
P-14 Enfield
FN .222 Benchrest action
Brevex Magnum Mauser
Husqvarna
- Page 7 Husqvarna Model 8000
Tradewinds "600" (Kirco M-600)
Sako L-46
Sako L-57
Sako L-579
Sako A-1
- Page 8 Sako L-61
Ithaca LSA-55
Herters (BSA) U-9 Action
Winchester Model 54 & 70 (Pre 64)
Winchester Model 54 & 70 (.22 Hornet)
- Page 9 Remington 721, 722, & 725
Savage M-110
Savage M-110 (without Locknut)
Savage M-110C
Mathieu Action

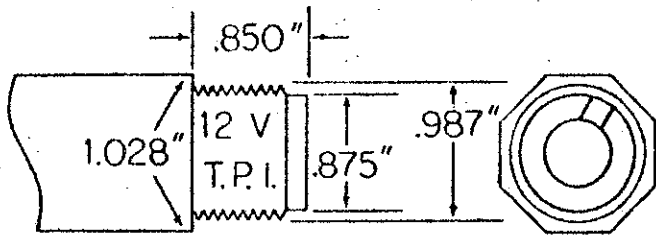
- Page 10 Weatherby Mark V Magnum
Weatherby Mark V Varmintmaster
Ranger Arms Texas Magnum
Champlin Action
Ruger M-77
- Page 11 Shilen Single Shot (Magnum Bolt Face)
Ethan Allen
Marlin Ballard
Browning S.S.
- Page 12 Comblain (Hammer)
Comblain (Hammerless)
Crescent
Deeley & Edge
- Page 13 Gibbs Farquharson
Fraser
Hopkins & Allen No. 722
Hopkins & Allen No. 822
- Page 14 Hopkins & Allen No. 922 (New Model Jr.)
Hopkins & Allen (Medium Size Action)
Hopkins & Allen (Falling Block Stogun)
Martini Cadet
- Page 15 Martini-Enfield .303
Martini-Henry .577/.450
Mossberg Model L
Peabody Side-Hammer
Ethan-Allen (Phoenix)
- Page 16 Remington Navy Cadet
Remington Rolling-block Military Rifle
Remington No. 1 (Black Powder Action)
Remington No. 1 (Cal. 7MM)
Remington No. 1½
- Page 17 Remington No. 2
Remington No. 4 (Solid Frame)
Remington No. 4 (Take-down)
Remington-Hepburn Rifle
- Page 18 Ruger
Sharps Side-Hammer
Sharps-Borchardt
Springfield M-73
- Page 19 Stevens Side Plate (Small Action)
Stevens Side Plate (Large Action)
Stevens No. 44
Stevens No. 44½
Stevens No. 044½
- Page 20 Stevens Favorite (With Side Extractor)
Stevens Favorite (2-diameter Shank)
Stevens Favorite M-1915
Stevens Favorite (With Lock Ring Adjustment)

Mauser Model 1895, Swedish Mauser Model 94 Carbine & 96 Rifle
Remington Model 12 Rifle
Winchester Solid-Frame Models 1892, 1894, 53, 55, 64, 65 Rifles
Remington Model 725 Rifle
Marlin Models 1893, 36 & 336 Rifles
Winchester Models 52B & 52C Rifles
Remington Model 722 Rifles
U.S. Krag Models 92 & 99
Savage Model 1899
Styer-Mannlicher Model 1895 Straight-pull Rifle
Mauser Model 1898 Small Ring
Mexican Mauser Small Ring
Weatherby Mark V Rifle

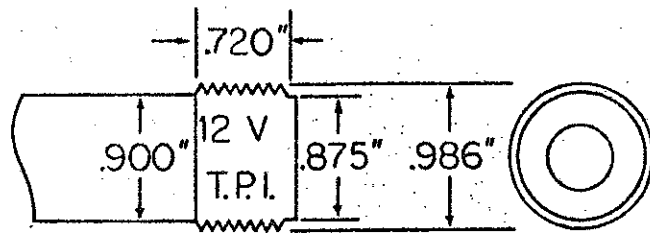
Page 27 Marlin Models 1891, 1892, 1847 & 39 Rifles
Mauser Model 1891
Remington Models 740, 742, & 760 Rifles
Winchester Model 1895
Austrian Styer-Mannlicher Model 1890
.30 U.S. Carbine
Colt 22 Lightning Rifle
Colt Colteer Rifle
Winchester Model 77 .22 Rifle
Winchester Model 43
Winchester Model 75 T
Winchester Model 03, 63
Winchester Model 61
Marlin Model 1881
Marlin Model 81
Marlin Model 94
Marlin Model 56, 57 & 80
Marlin Model 100
Marlin Model 95
Mossberg Model 04M
Mossberg Model 46M
H. & R. Leatherneck
Savage Models 340, 342
Stevens Models 322, 325
Savage Model 842
Savage Model 12
Stevens Visible Loader
Stevens Models 87, 76, & 85
Savage Models 6, 7
Springfield Models 76, 187, 188 & 850
Noble Model 235
Remington Model 24
Browning .22 Auto Rifle
Remington Model 514
Remington Model 500
Remington Model 513T

Page 28 Snider Enfield
Remington Model 33
Hawthorne Warrior Model 825
Page-Lewis Model D
Ross Model 1905
M-1 Garand
Martini-Henry .577/.450
Mannlicher-Schoenauer

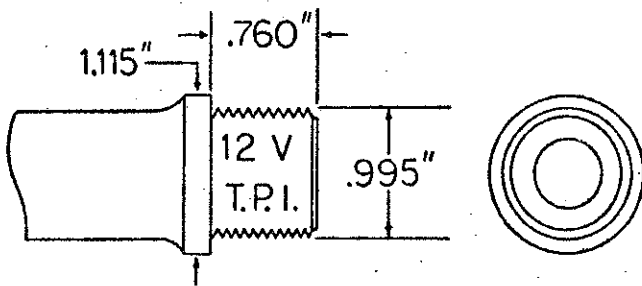
Barrel Shank Drawings



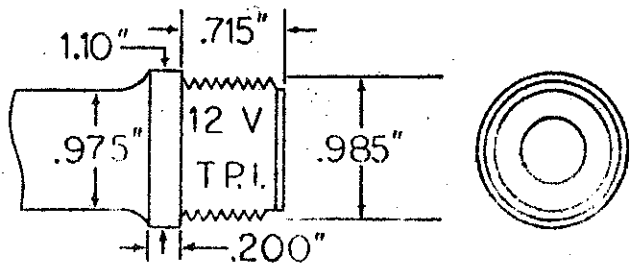
MODEL 71/84 MAUSER



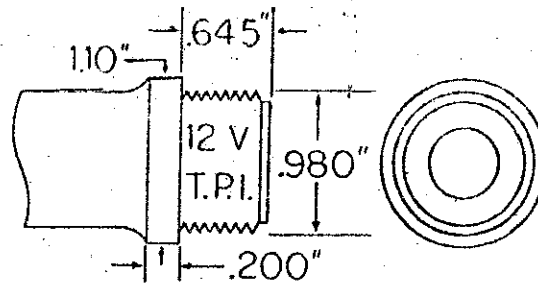
GERMAN MODEL 88 COMMISSION



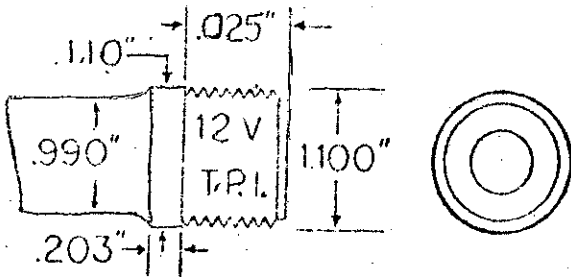
MODEL 89 BELGIUM MAUSER



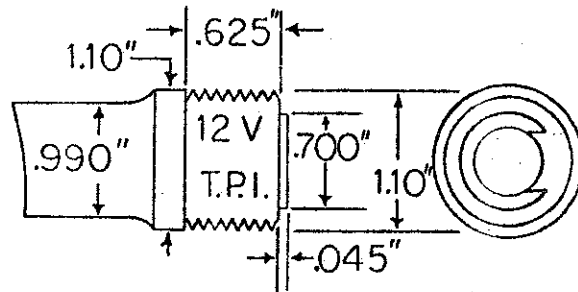
MODEL 91 ARGENTINA MAUSER



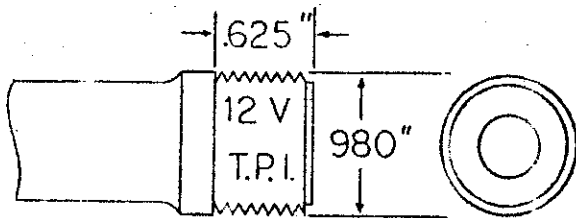
MODEL 93, 94, 95 & 96 MAUSER



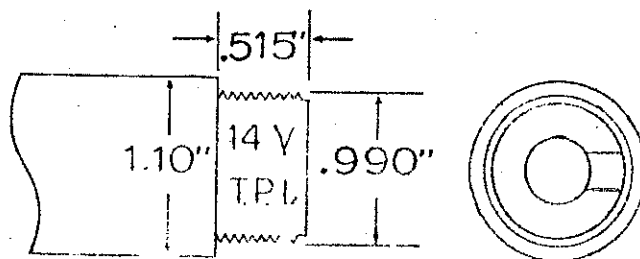
LARGE RING MODEL 98 MAUSER



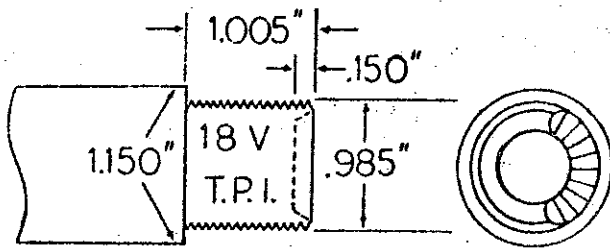
MODEL 24 YUGOSLAVIAN MAUSER
(M-98)



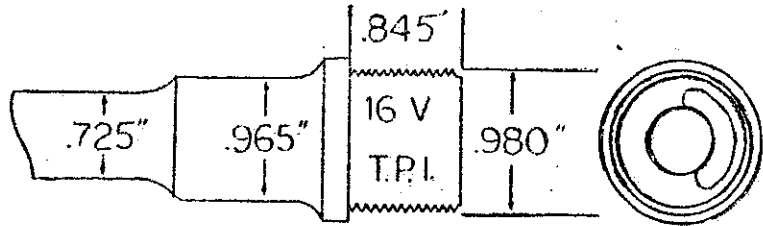
MAUSER G 33-40



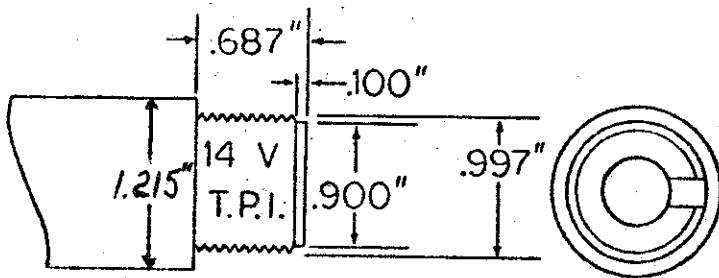
8MM SIAMESE M-98 MAUSER



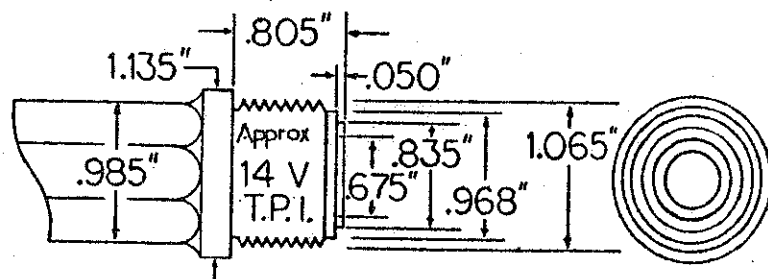
FRENCH BERTHIER 8MM LEBEL CAL.



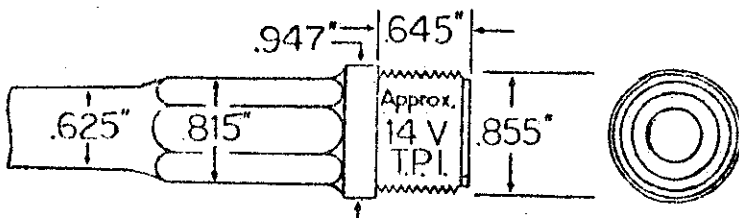
FRENCH MAS M-1936



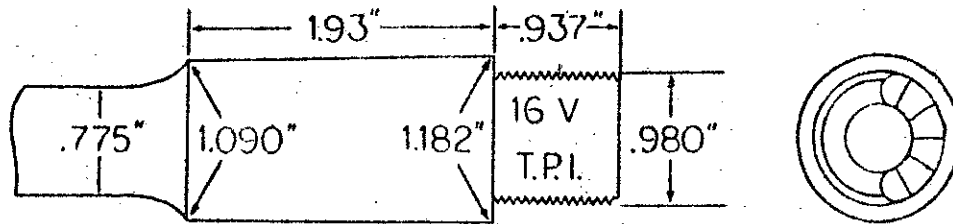
LEE ENFIELD



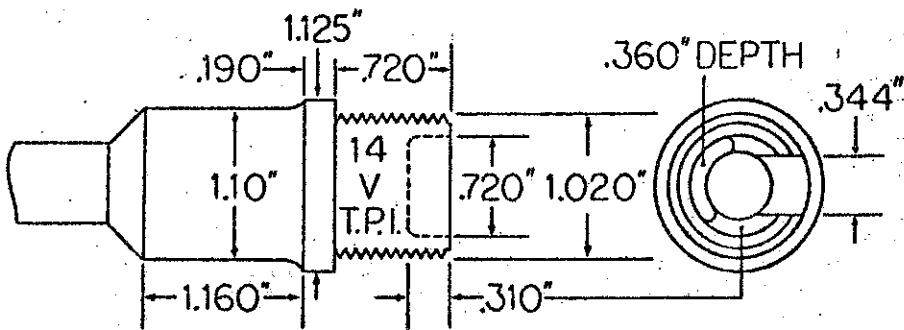
ITALIAN CARCANO



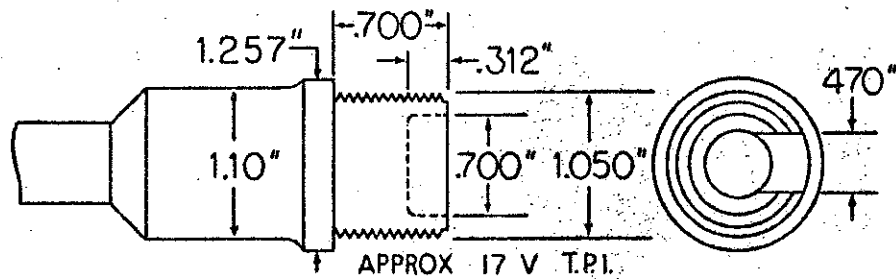
ITALIAN YOUTH RIFLE



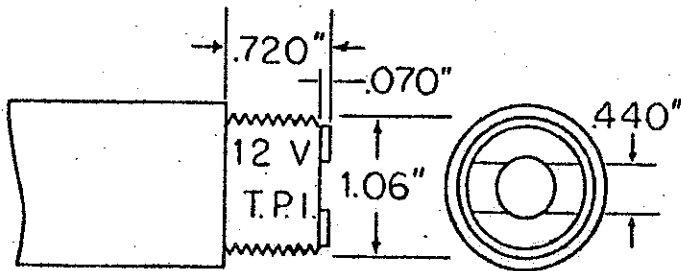
MODEL 91 MOSIN NAGANT



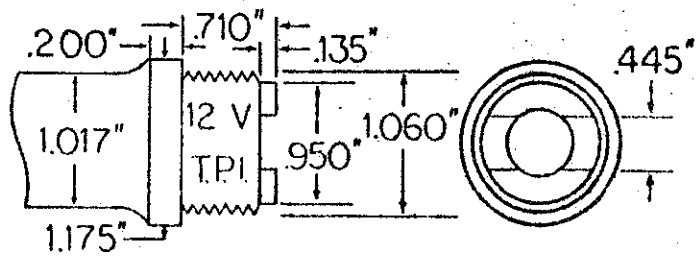
JAPANESE TYPE 38 & 44



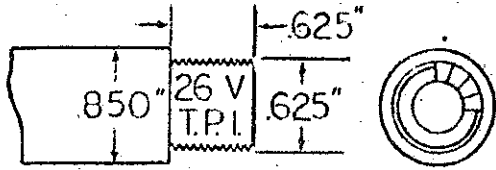
JAPANESE TYPE 99



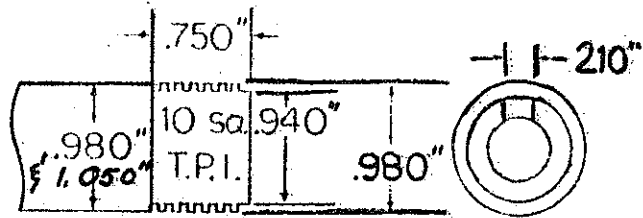
GREEK MANNLICHER SCHOENAUER



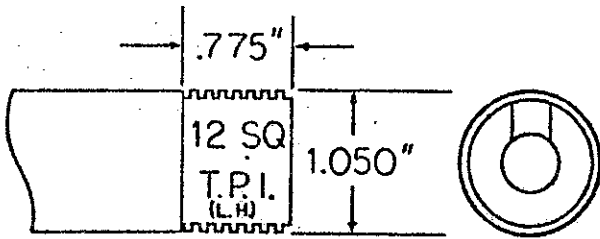
GERMAN MODEL G-98/40



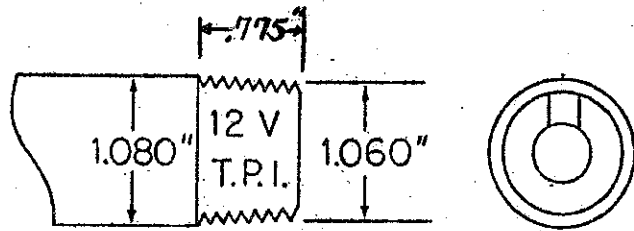
MODEL 1921 SPANISH
DESTROYER CARBINE



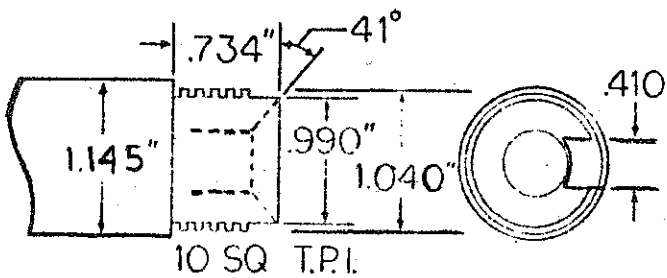
U.S. KRAG JORGENSEN



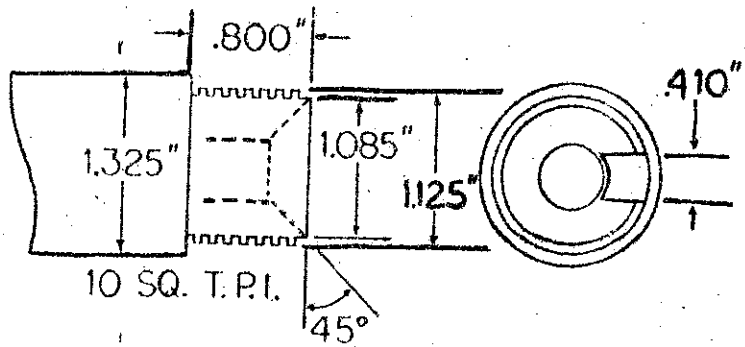
NORWEGIAN KRAG



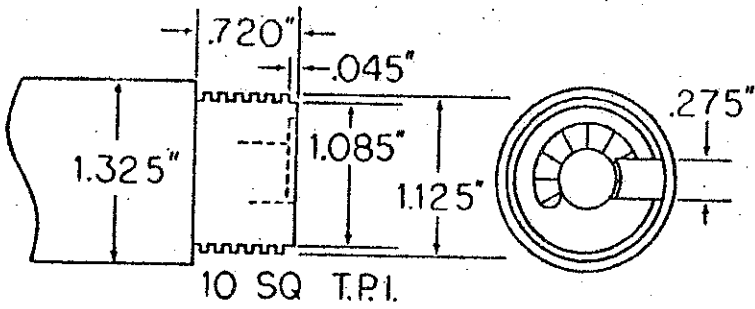
DANISH KRAG



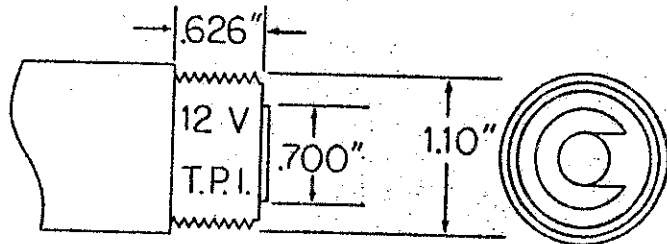
U.S. SPRINGFIELD M-1903, 1903A3-A4
and original Newton rifle



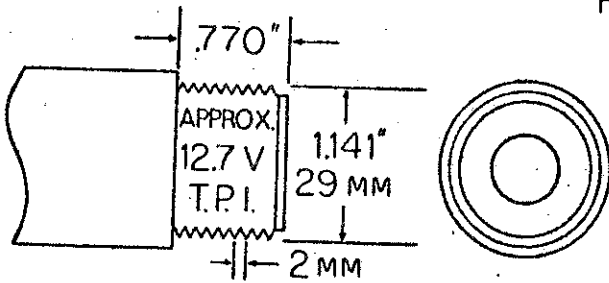
MODEL 30 30S & 720 REMINGTON
MODEL 1917 ENFIELD



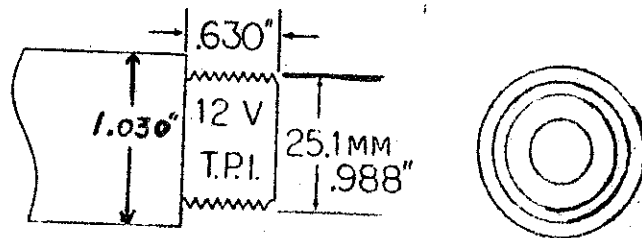
P-14 ENFIELD



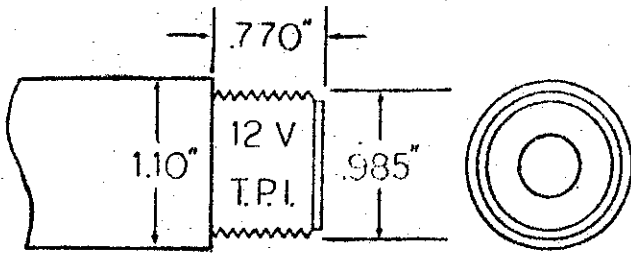
F. N. 222 BENCHREST ACTION



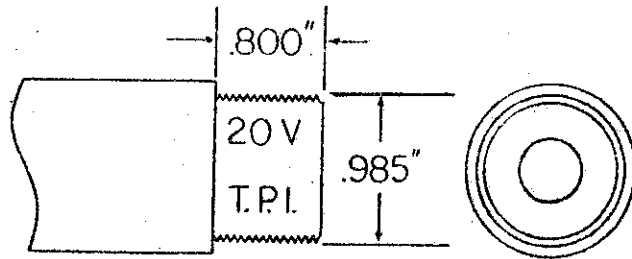
BREVEX MAGNUM MAUSER



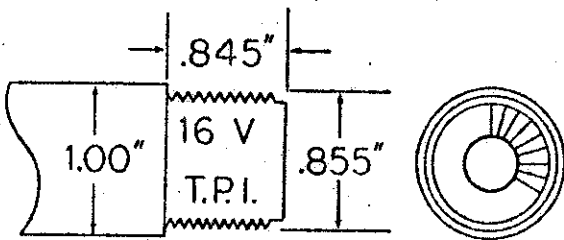
HUSQVARNA



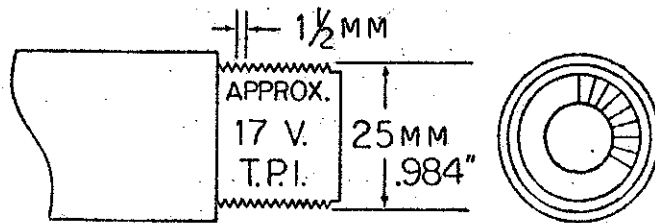
HUSQVARNA MODEL 8000



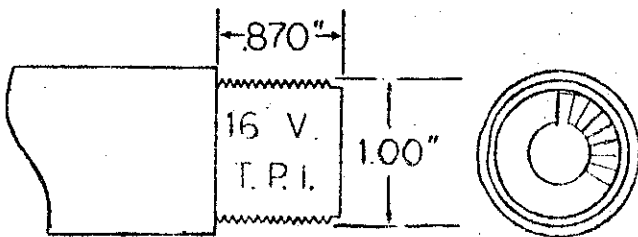
TRADEWINDS "600"
(KRICO M-600)



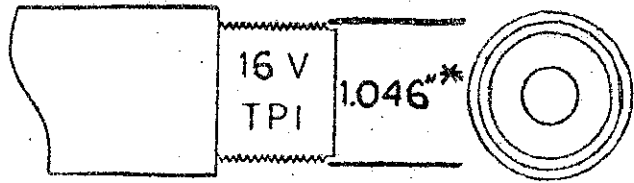
SAKO L-46



SAKO L-57

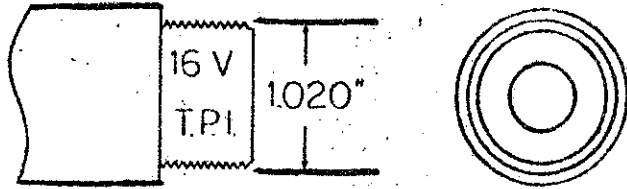


SAKO L-579

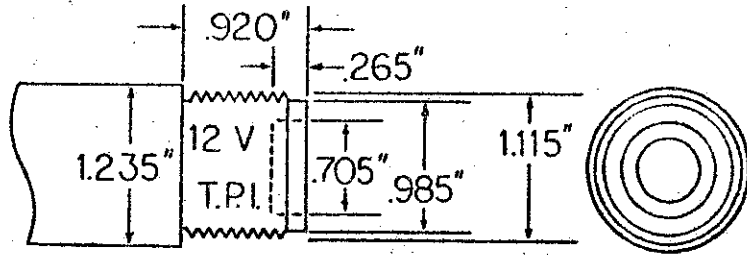


* EARLY MODELS 100°

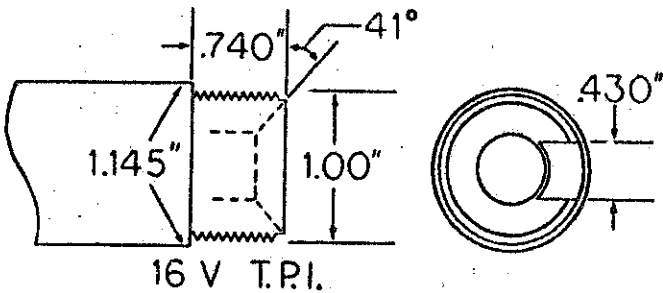
SAKO L-61



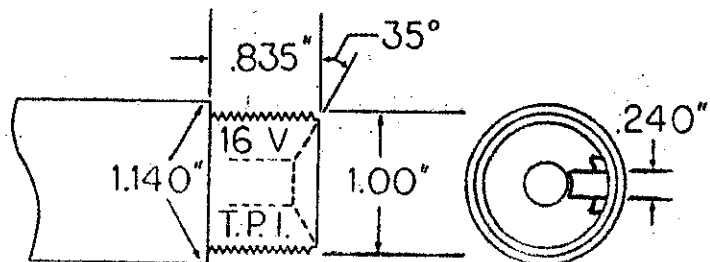
ITHACA LSA-55



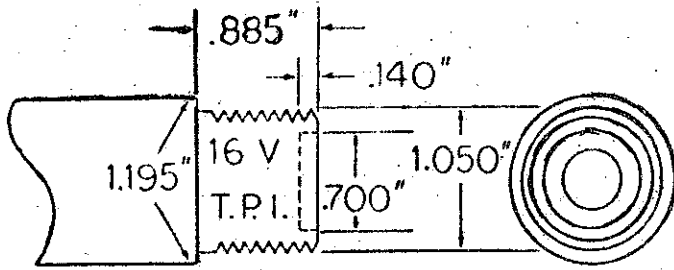
HERTERS (B.S.A) U-9 ACTION



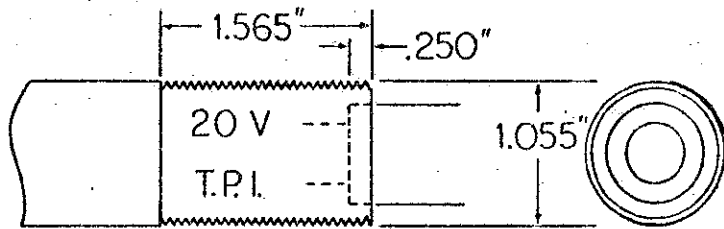
WINCHESTER MODEL 54 & 70 (PRE '64)



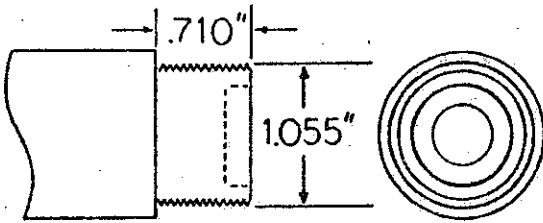
WINCHESTER MODEL 54 & 70
(.22 HORNET)



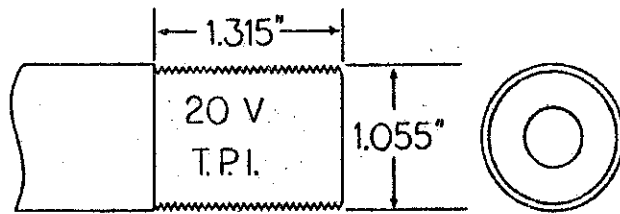
REMINGTON MODEL 721, 722 & 725



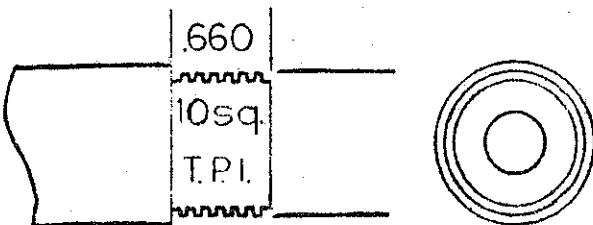
SAVAGE M-110



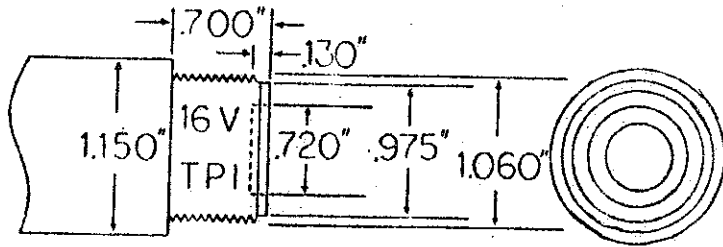
SAVAGE M-110
IF MADE FOR USE WITHOUT
LOCKNUT



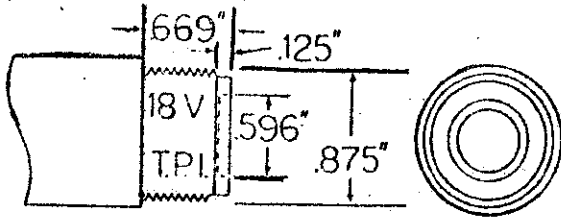
SAVAGE M-110C



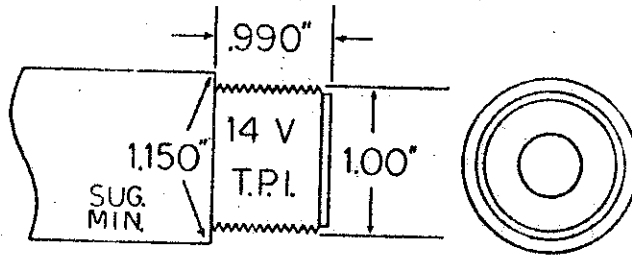
MATHIEU ACTION



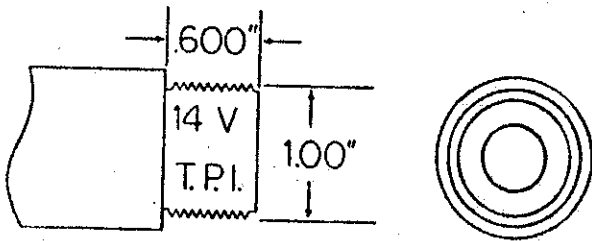
WEATHERBY MARK V MAGNUM



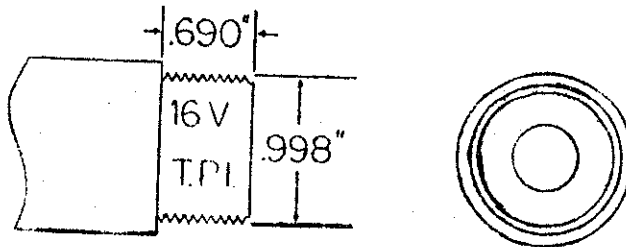
WEATHERBY MARK V
VARMINTMASTER



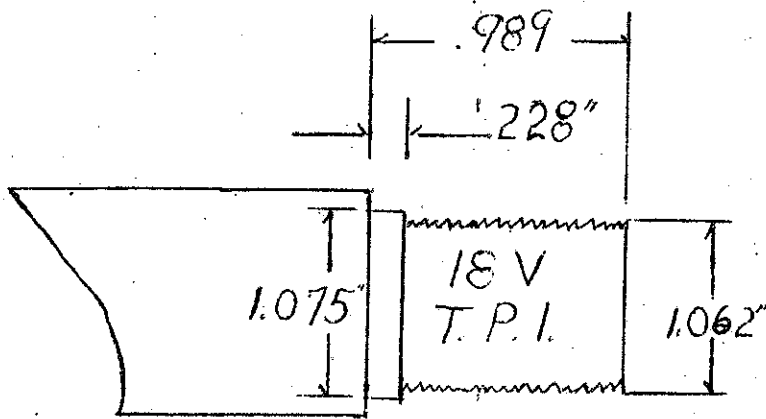
RANGER ARMS TEXAS MAGNUM



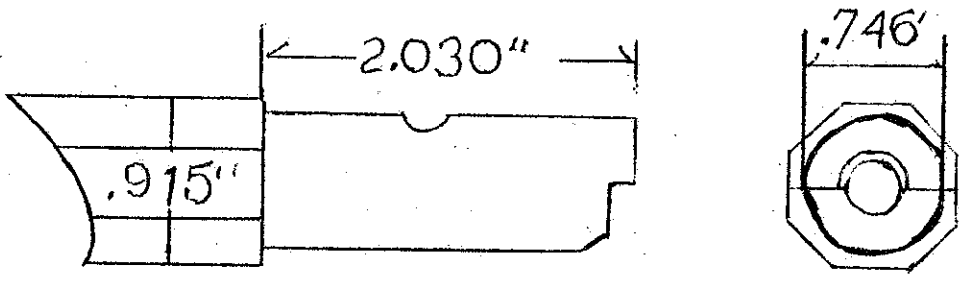
CHAMPLIN ACTION



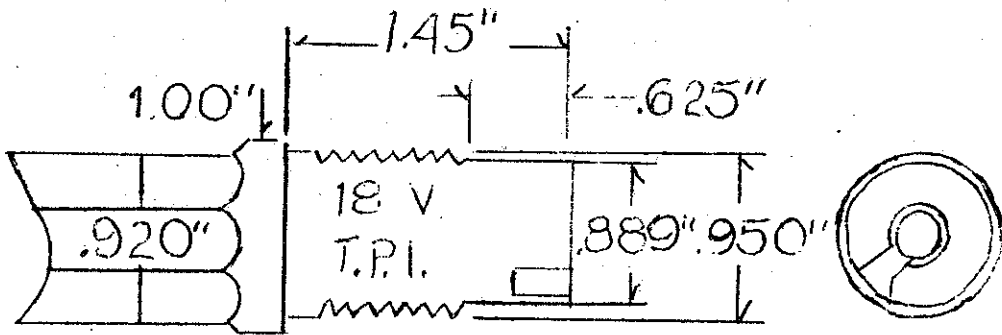
RUGER M-77



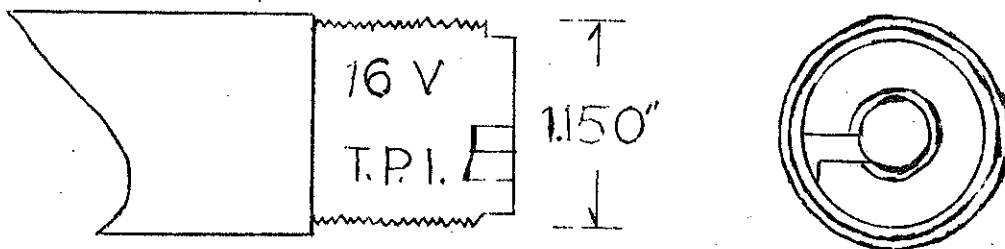
SHILEN SINGLE SHOT (MAG. BOLT FACE)



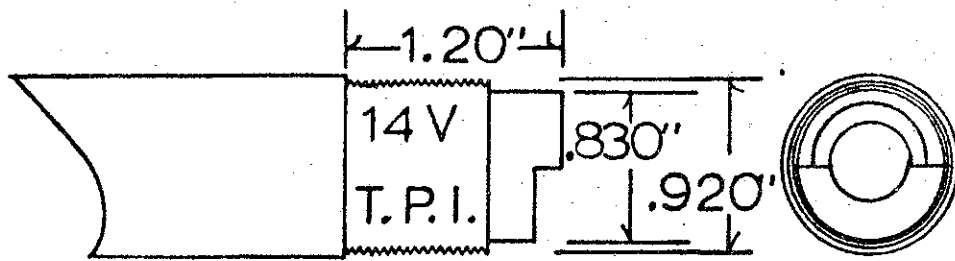
ETHAN ALLEN



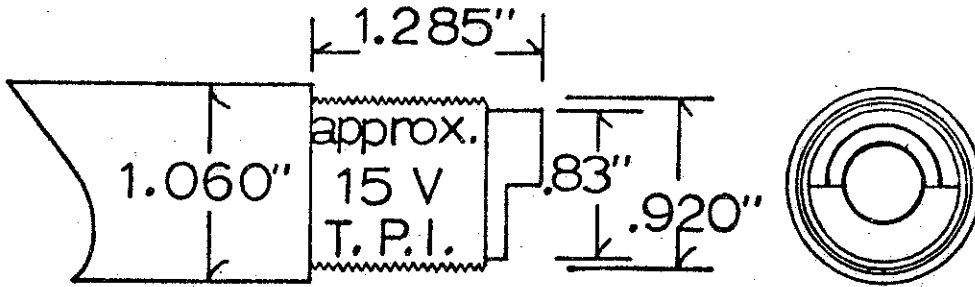
MARLIN BALLARD



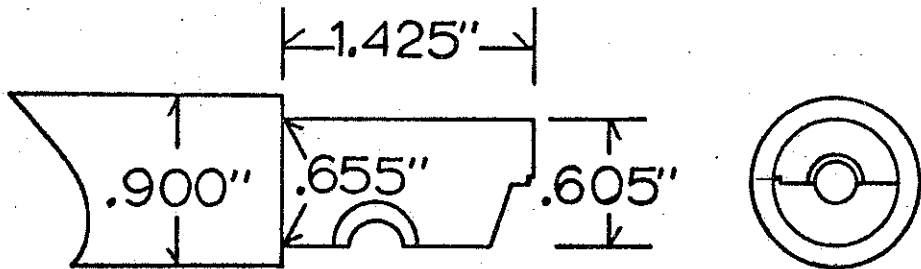
BROWNING S.S.



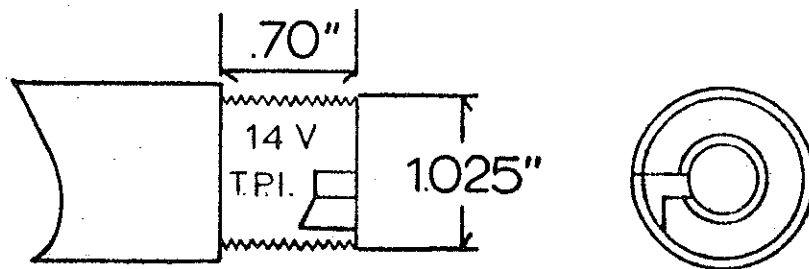
COMBLAIN (Hammer)



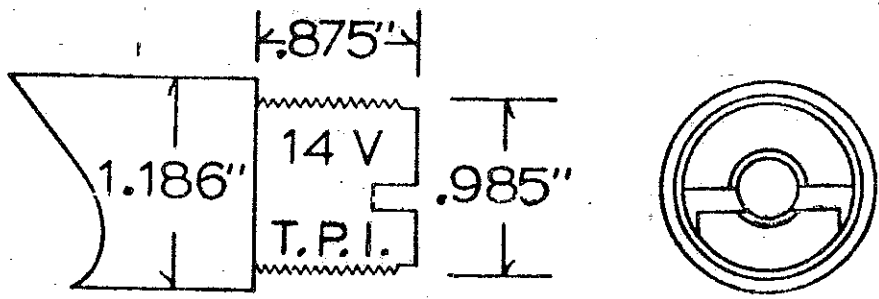
COMBLAIN (Hammerless)



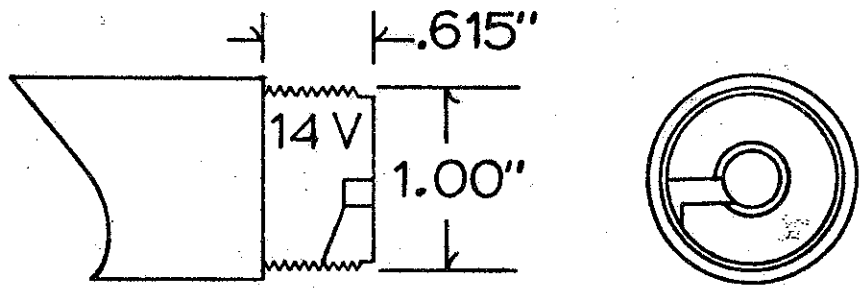
CRESCENT



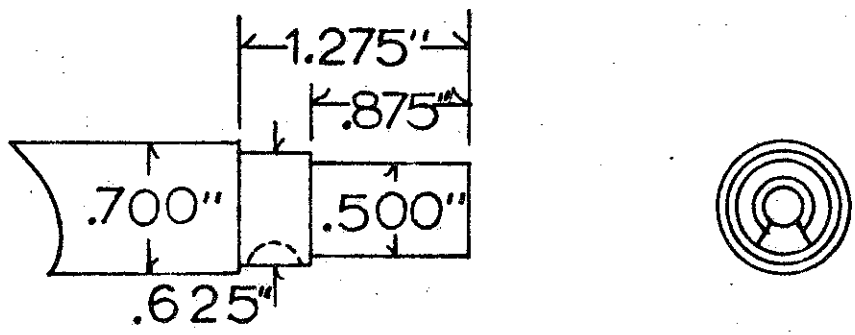
DEELEY & EDGE



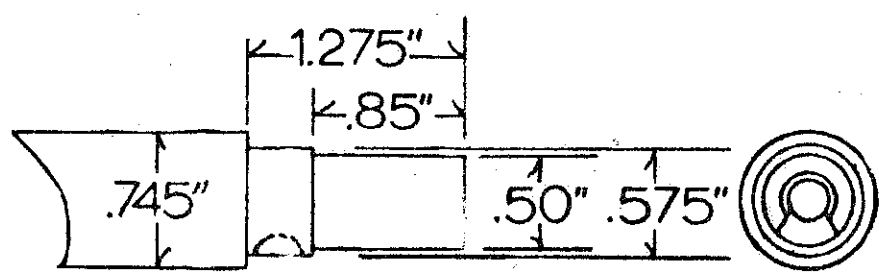
GIBBS FARQUHARSON



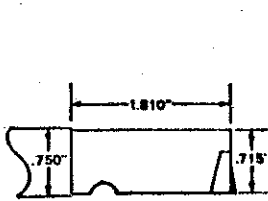
FRASER



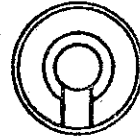
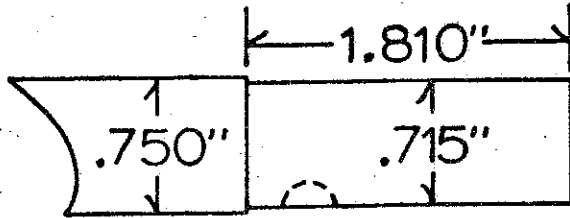
HOPKINS & ALLEN NO. 722



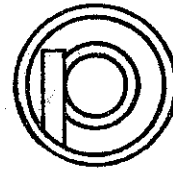
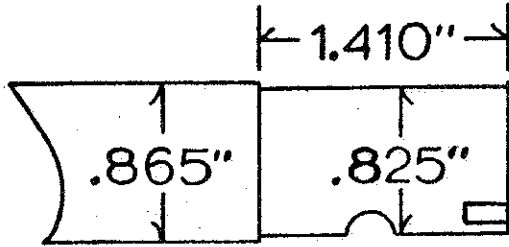
HOPKINS & ALLEN NO. 822



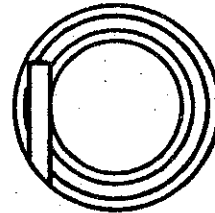
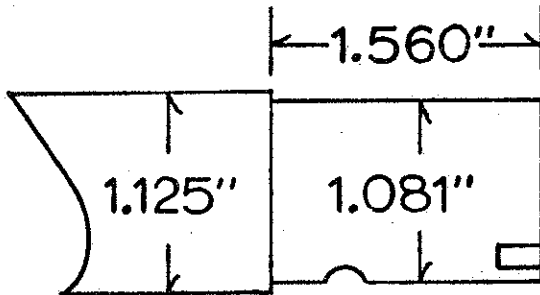
Hopkins & Allen
New Model Jr. rifle



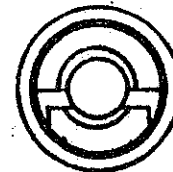
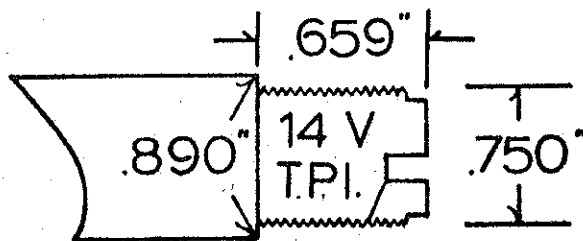
HOPKINS & ALLEN NO. 922
(New Model Jr.)



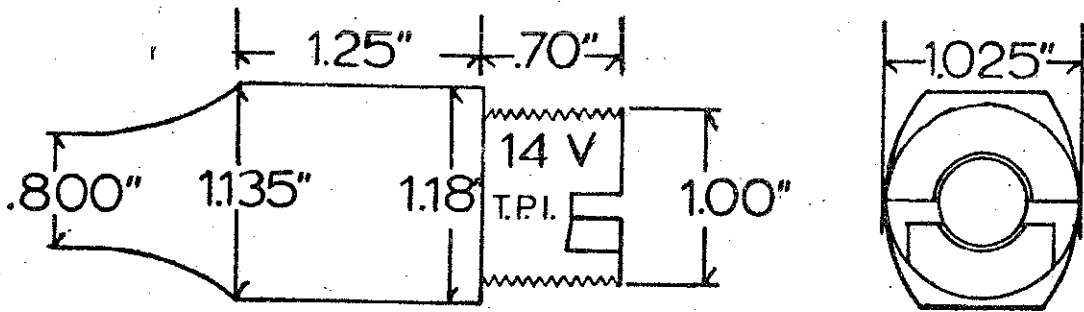
HOPKINS & ALLEN
(Medium Size Action)



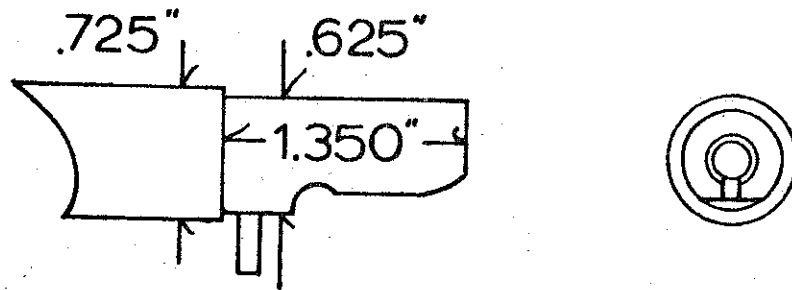
HOPKINS & ALLEN
(Falling Block Shotgun)



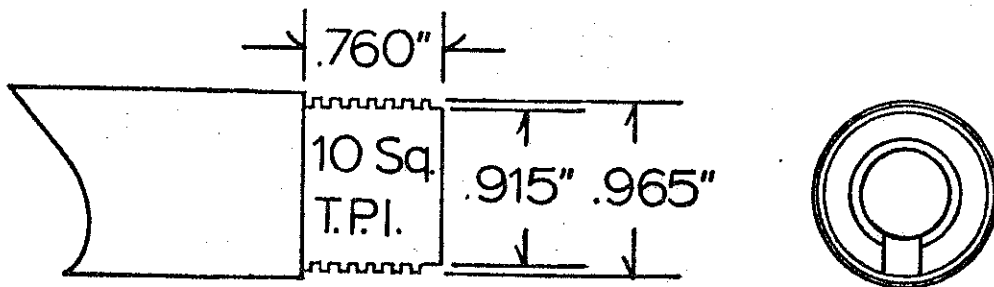
MARTINI CADET



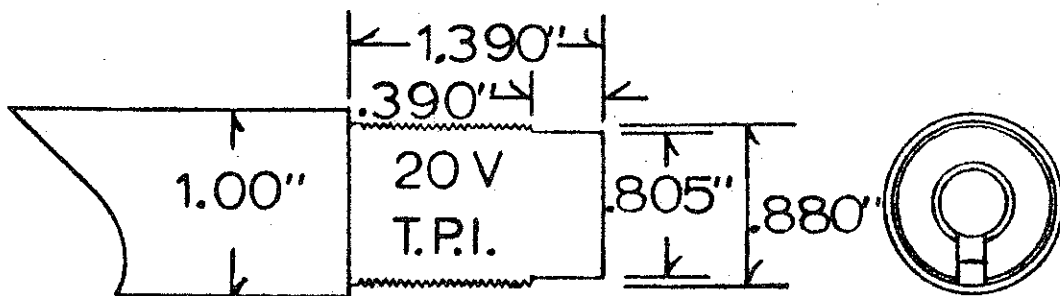
MARTINI - ENFIELD .303
 MARTINI - HENRY .577/450



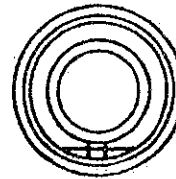
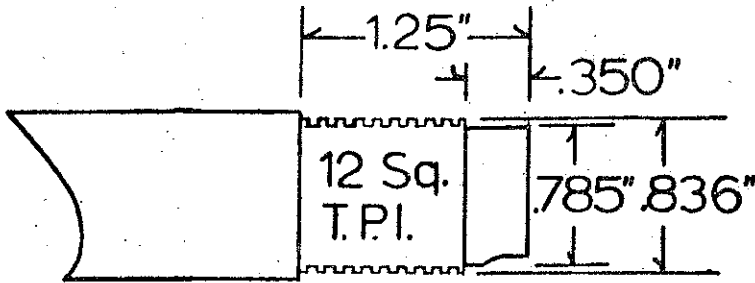
MOSSBERG MODEL "L"



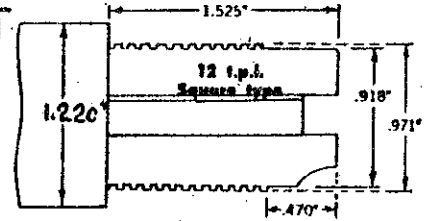
PEABODY SIDE - HAMMER



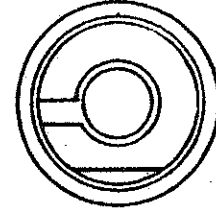
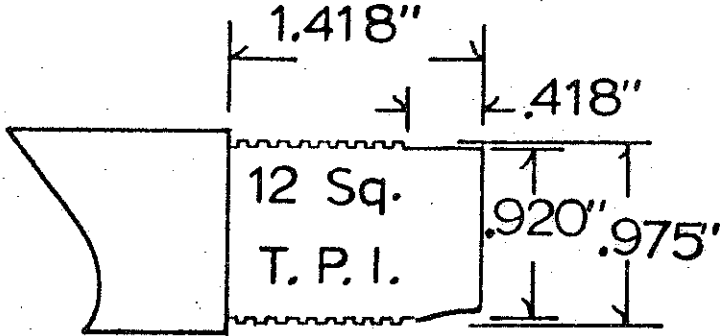
PHOENIX



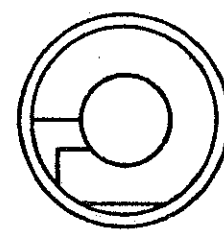
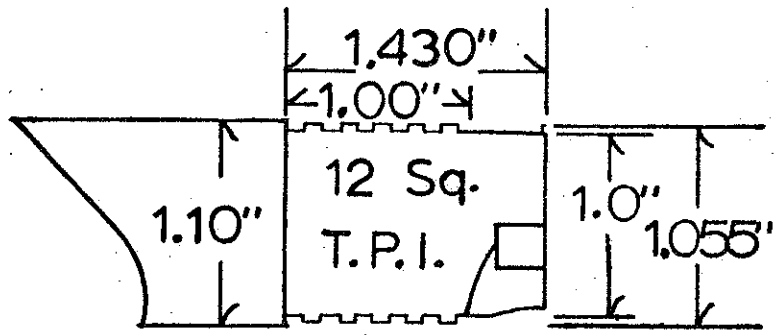
REMINGTON NAVY CADET



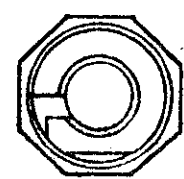
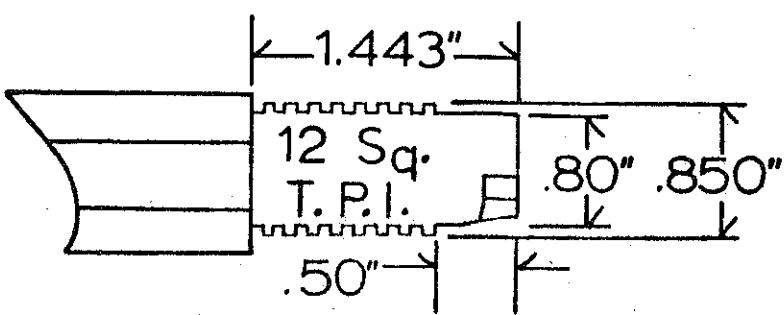
Remington rolling-block military rifle



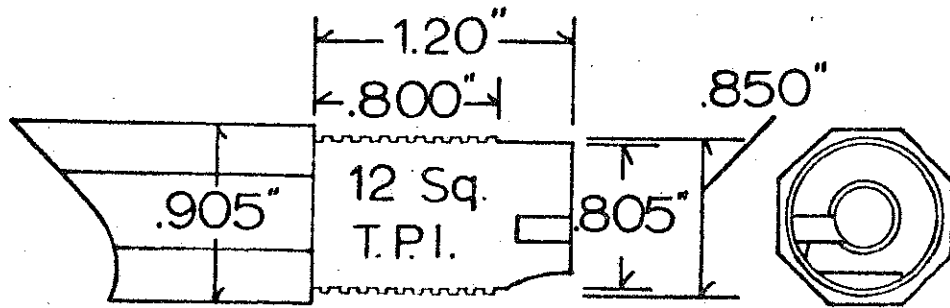
REMINGTON NO.1 (Black Powder Action)



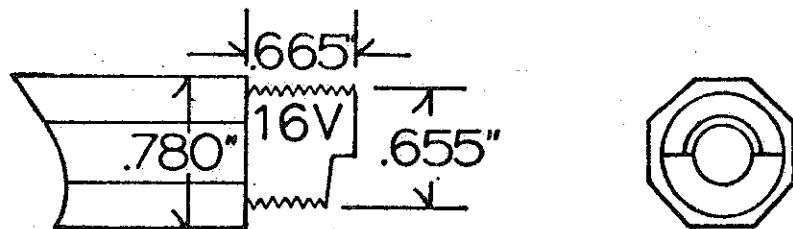
REMINGTON NO.1 (Cal. 7mm)



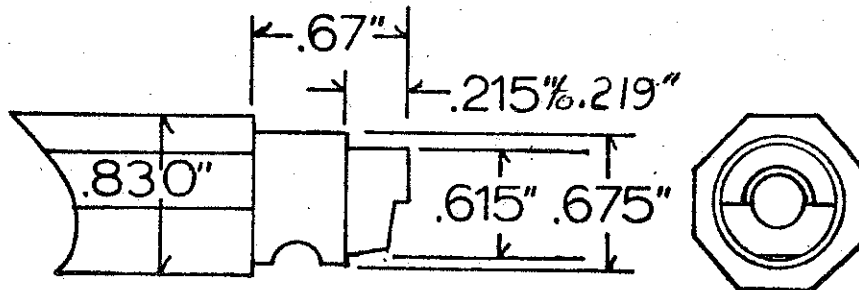
REMINGTON NO. 1 1/2



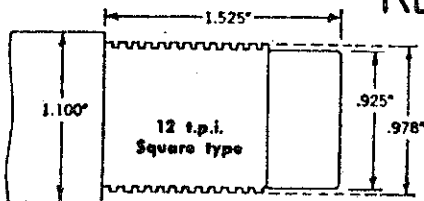
REMINGTON NO. 2



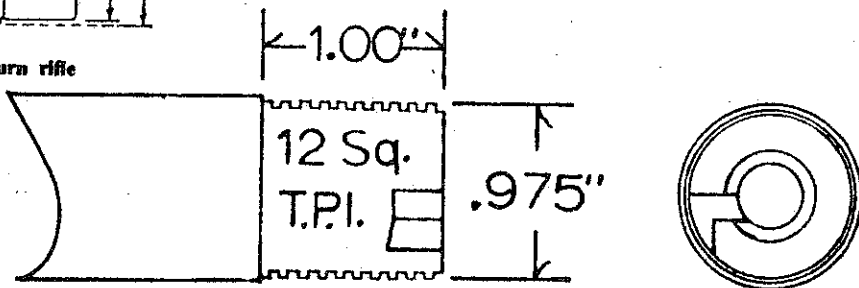
REMINGTON NO. 4
(Solid Frame)



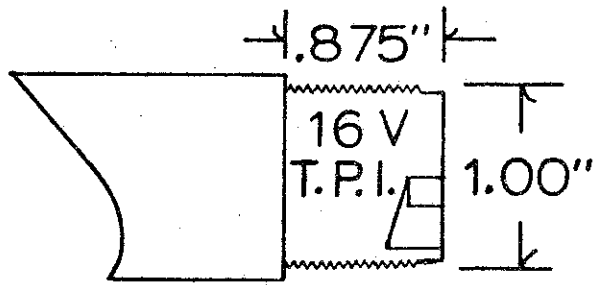
REMINGTON NO. 4
(Take - down)



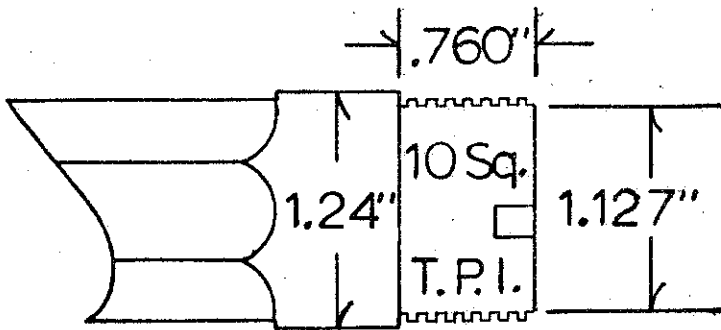
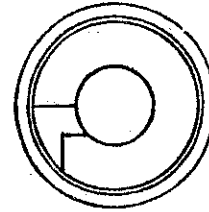
Remington Hepburn rifle



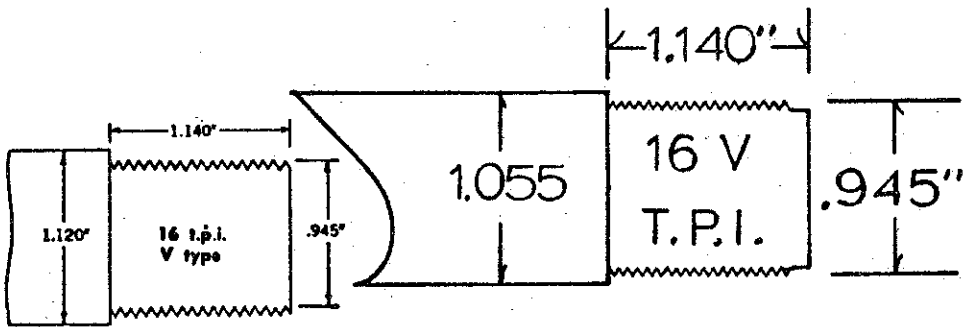
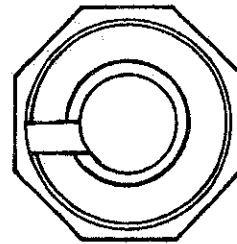
REMINGTON - HEPBURN



RUGER

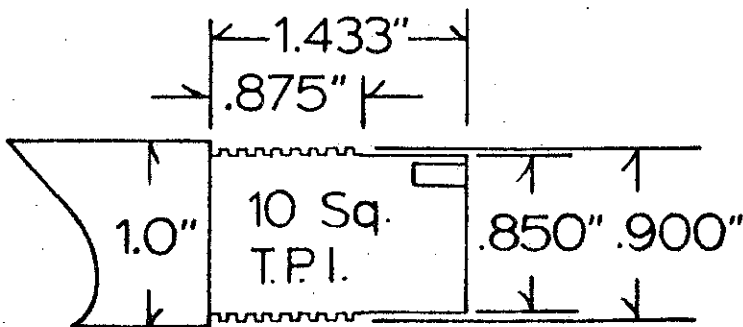
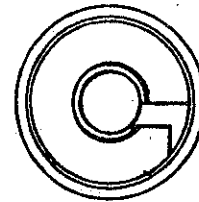


SHARPS SIDE-HAMMER

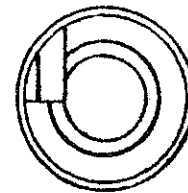


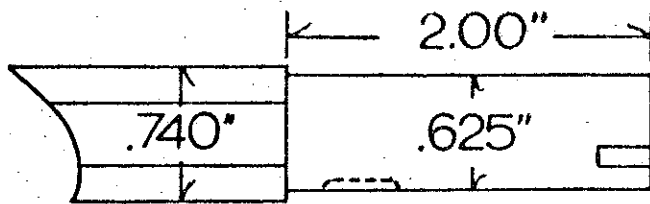
Sharps Borchardt rifle

SHARPS - BORCHARDT

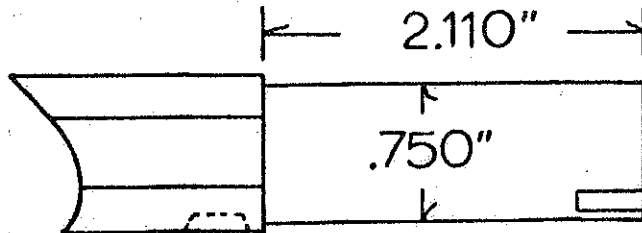


SPRINGFIELD M-73

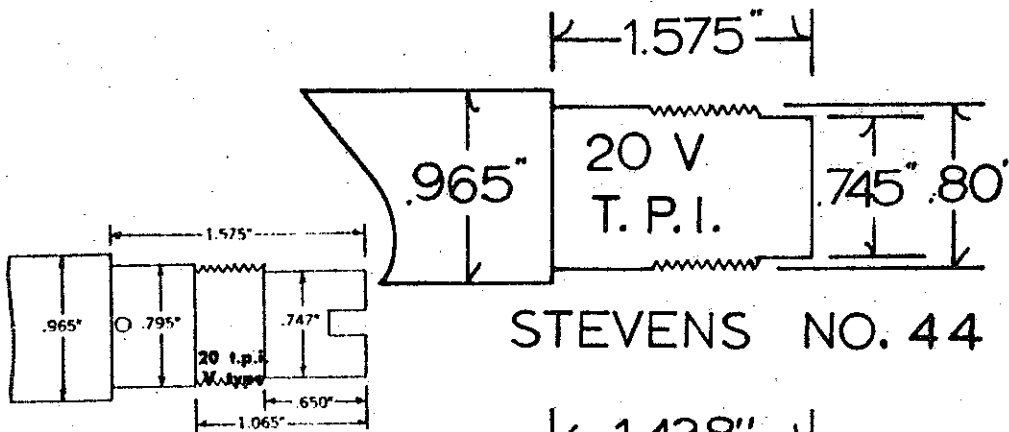
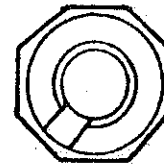




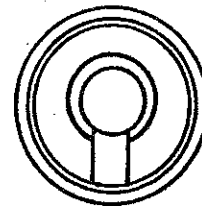
STEVENS SIDE PLATE (Small action)



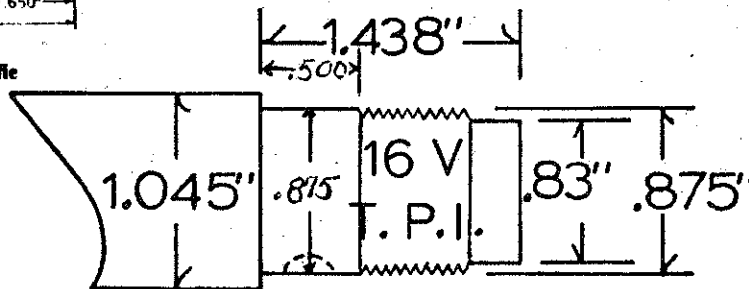
STEVENS SIDE PLATE (Large action)



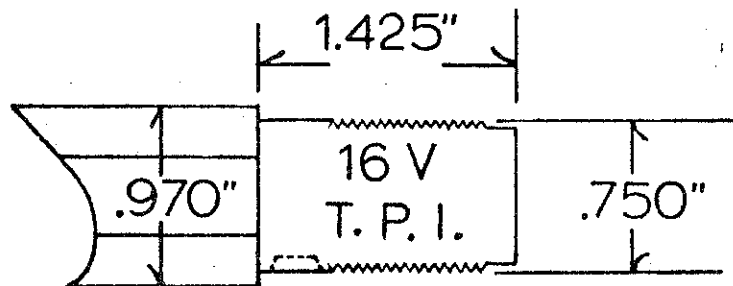
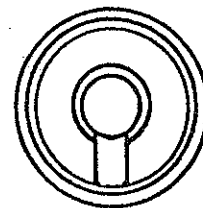
STEVENS NO. 44



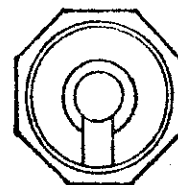
Stevens Model 44 rifle

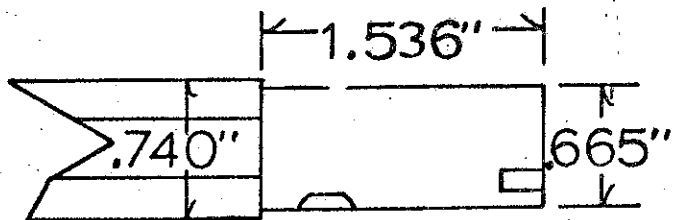


STEVENS NO. 44-1/2

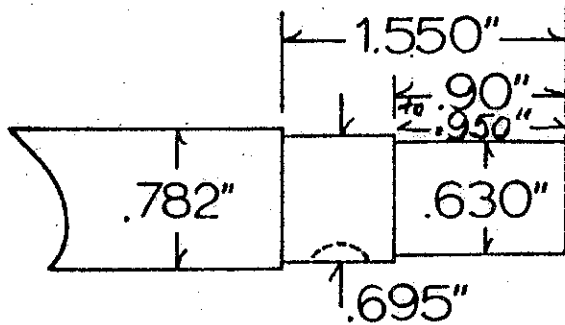


STEVENS NO. 044 1/2

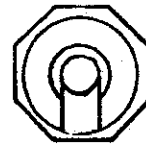
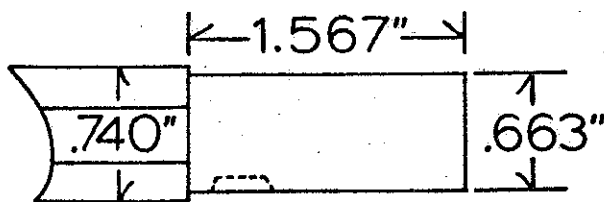




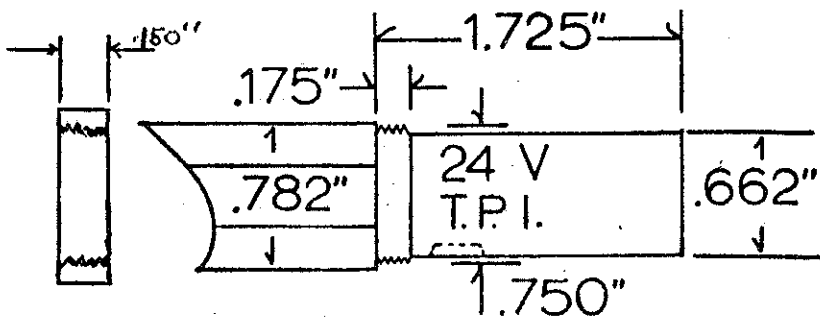
STEVENS FAVORITE
(With Side Extractor)



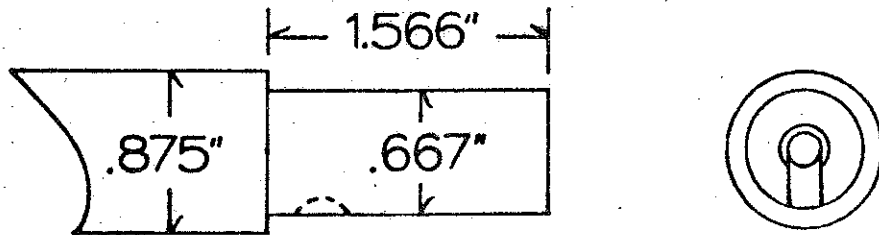
STEVENS FAVORITE
(2-diameter shank)



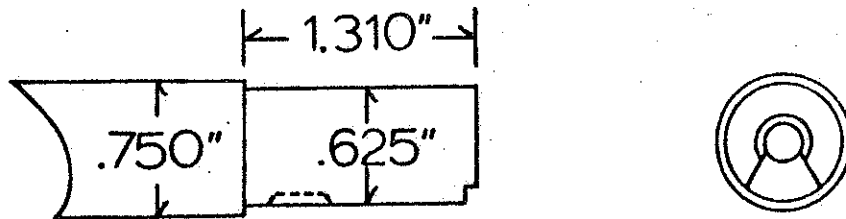
STEVENS FAVORITE M-1915



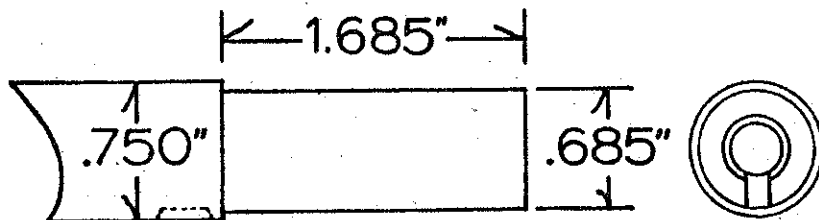
STEVENS FAVORITE
(WITH LOCK RING ADJUSTMENT)



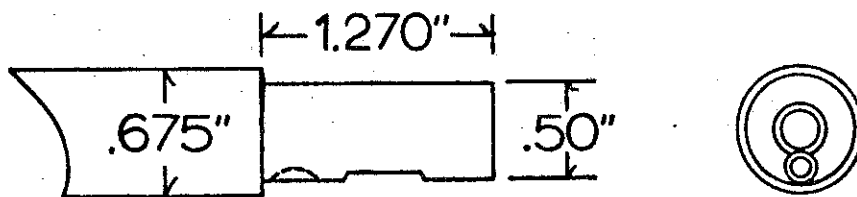
STEVENS NO. 418



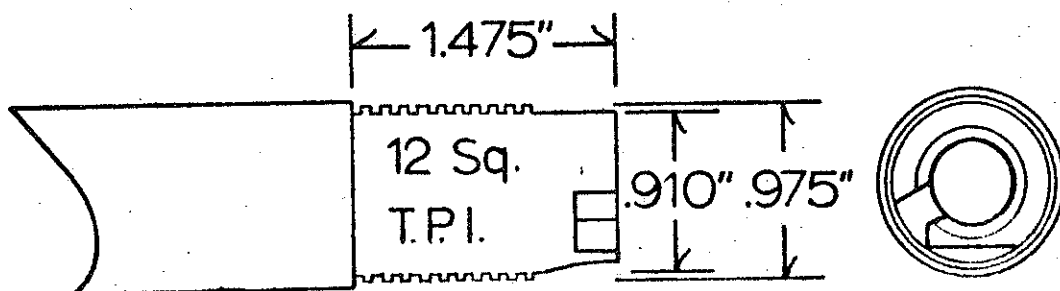
STEVENS Side - Lever CRACK SHOT



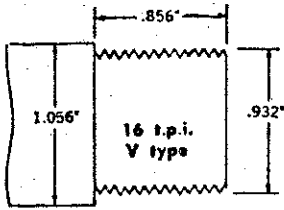
STEVENS NO. 12 MARKSMAN



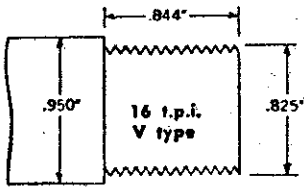
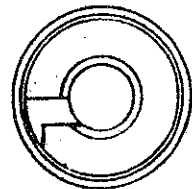
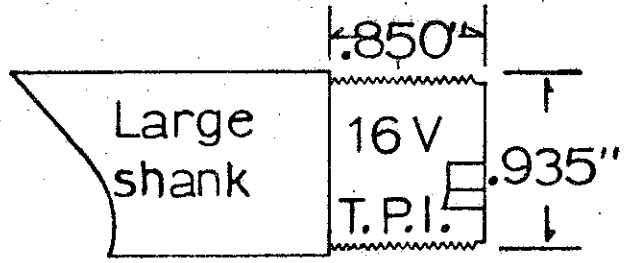
STEVENS NO. 14 LITTLE SCOUT



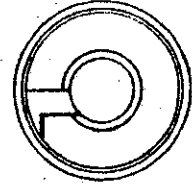
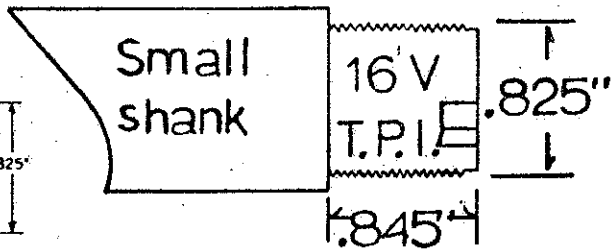
WHITNEY ROLLING BLOCK
(M-72 & New System)



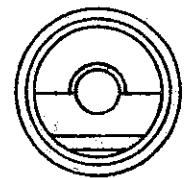
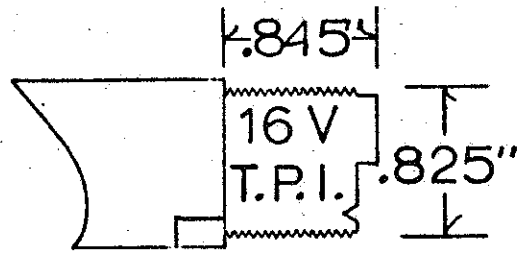
Winchester high-wall single-shot #3 and larger barrels



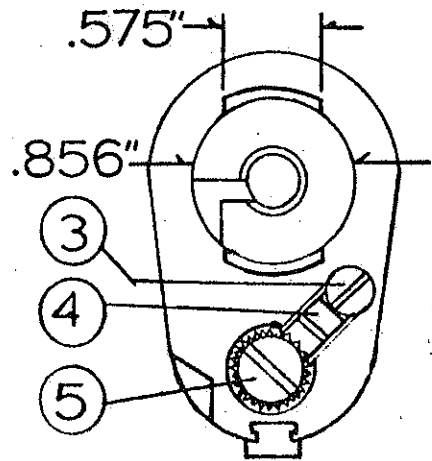
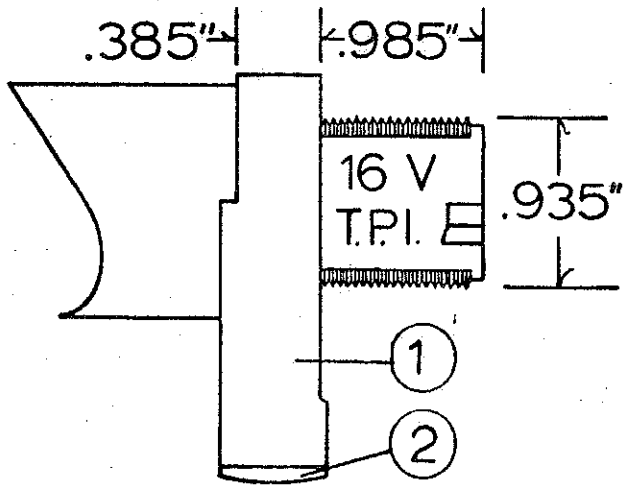
Winchester high-wall and low-wall single-shot #1 and #2 barrels



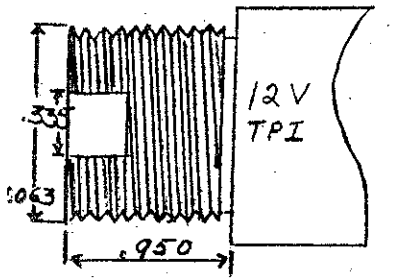
WINCHESTER M-1885 S.S.



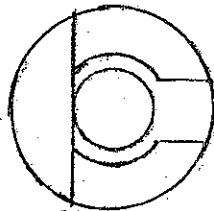
WINCHESTER (.22 R.F.)



WINCHESTER M-1885 (Take-down)

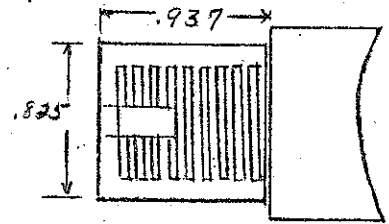


Männlicher 95

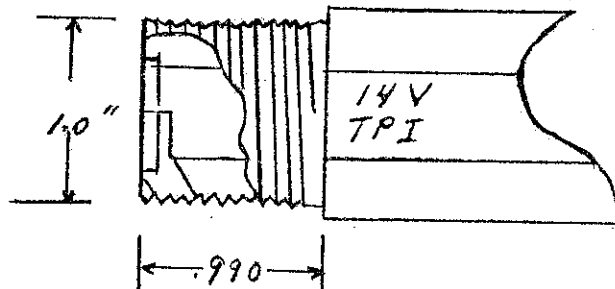
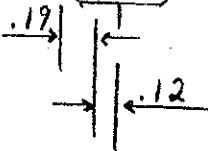
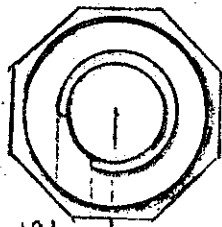
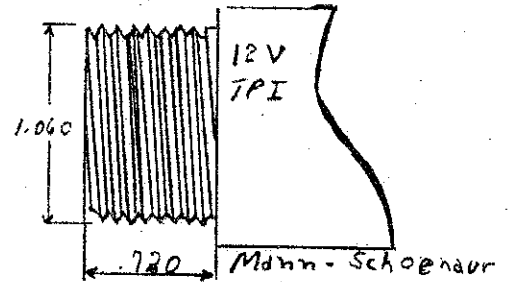
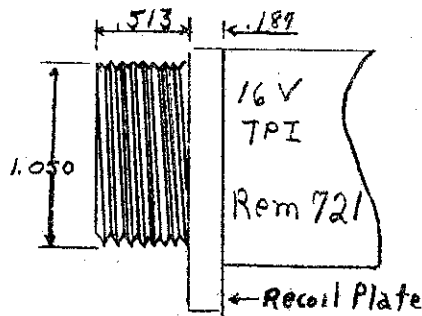
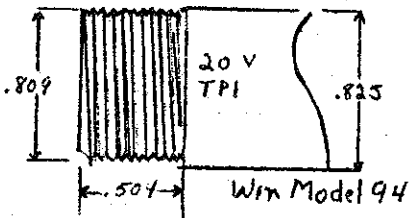
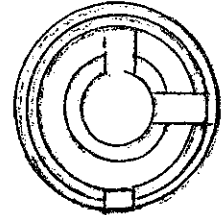
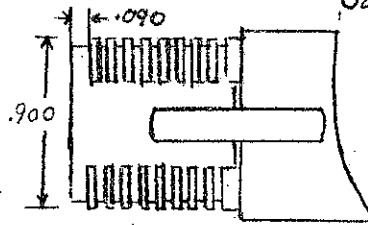


(Rear)

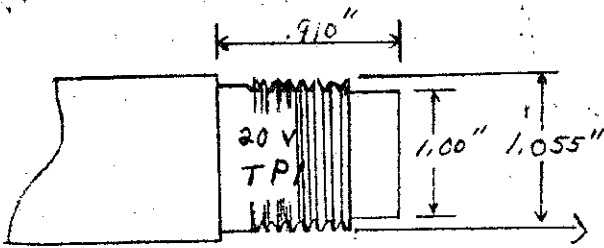
→ k-.095



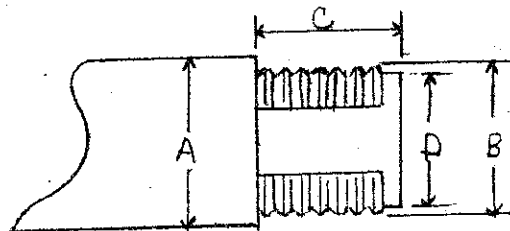
Savage 99 (Takedown)



Falling Blocks Works Action Thread

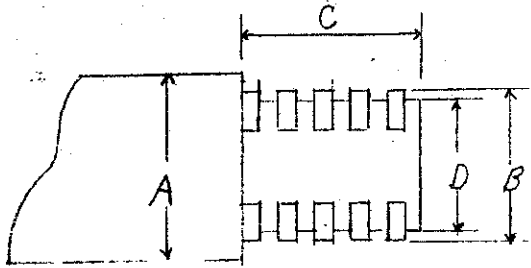


Browning 12 ga. Automatic
shotgun and Remington Model 11
Automatic Shotgun



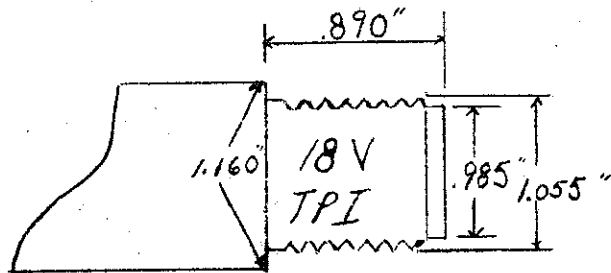
	GA	A	B	C	D	TPI
	12	1.192	1.123	.571	1.042	20V
	16	1.115	1.053	.650	.975	20V
	20	—	1.00	.680	.922	20V

Ithica Model 37 Shotgun

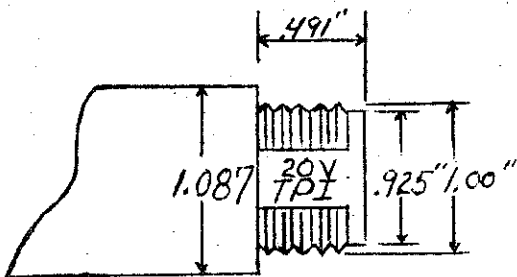


	GA	A	B	C	D	TPI
	12	1.204	1.10	.7018	1.022	145Q
	16	1.167	1.028	.704	.960	145Q
	20	1.180	1.025	.707	.950	14V

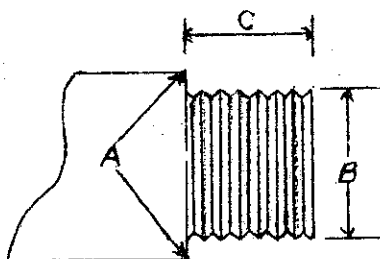
Remington Model 31
shotgun



Remington Model 11-48 Automatic
shotgun (12-ga)

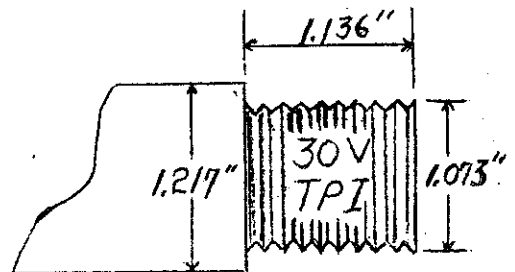


Remington Model 17
Shotgun (20-ga)

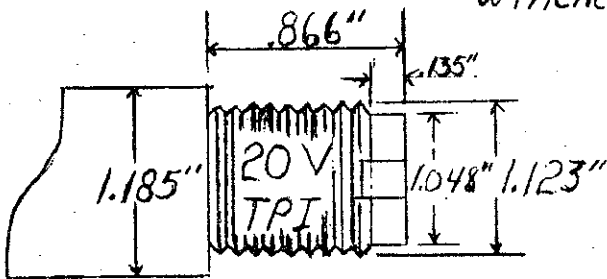


	GA	A	B	C	TPI
	12	1.140"	1.073"	1.048"	30V
	16	1.090"	.994"	1.048"	30V
	20	1.105"	1.00"	1.048"	30V

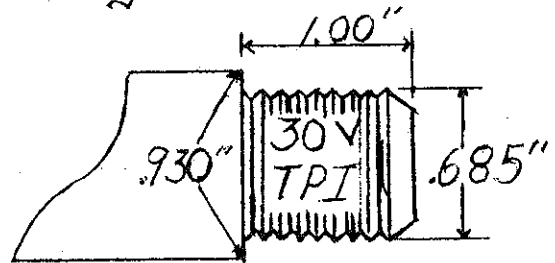
Winchester Model 12 Shotgun



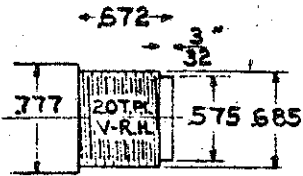
Winchester Model 97
Shotgun (12ga takedown)



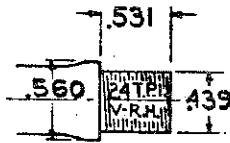
Winchester Model 25 Shotgun



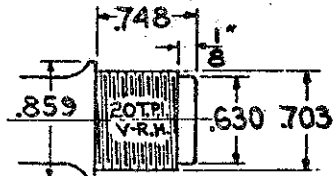
Winchester Model 42 Shotgun



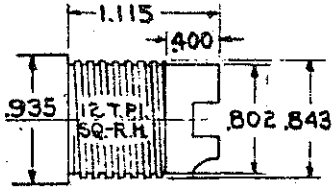
GREAT WESTERN REVOLVER
(AMERICAN MADE).



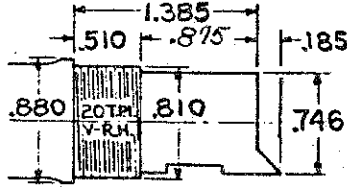
H.&R. MODEL 922
REVOLVER.



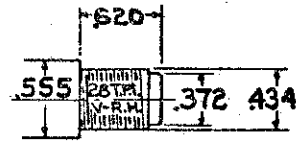
LUGER MODEL 08 PISTOL.



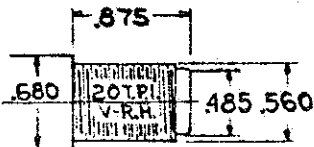
REMINGTON ROLLING-BLOCK
PISTOL.



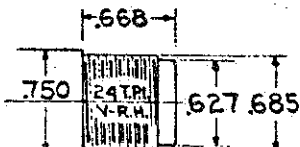
RUGER 22 AUTOMATIC
& MARK I PISTOLS.



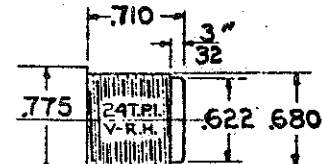
RUGER BEARCAT
REVOLVER.



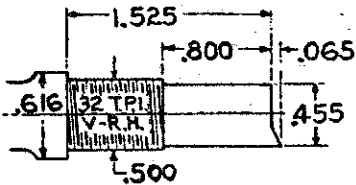
RUGER SINGLE SIX
REVOLVER.



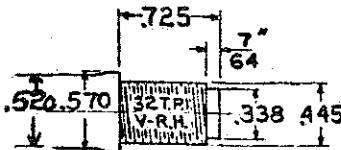
RUGER .357 BLACK HAWK
REVOLVER.



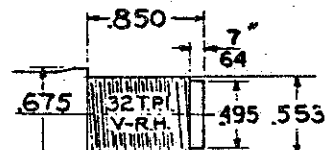
RUGER 44 MAGNUM
BLACK HAWK.



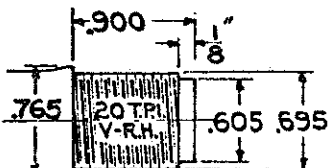
COLT WOODSMAN PISTOL.



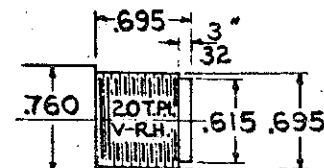
COLT POLICE POSITIVE
& POCKET POSITIVE REVOLVERS.



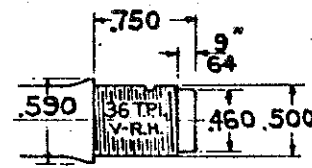
COLT D.A. ARMY, ARMY SPEC.,
& OFFICIAL POLICE REVOLVERS.



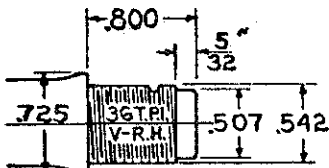
COLT NEW SERVICE & MODEL
OF 1917 REVOLVERS.



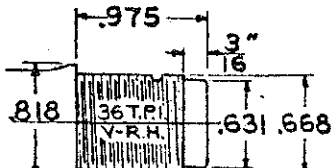
COLT SINGLE ACTION, BISLEY
& D.A. FRONTIER REVOLVERS.



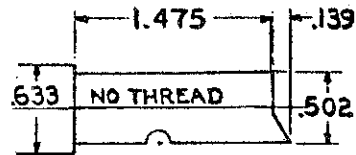
S.&W. 22/32 REVOLVER.



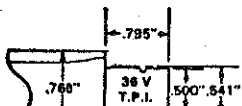
S.&W. N SERIES AND
MIL. & POL. MODEL REVOLVERS.



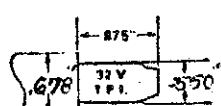
S.&W. MODEL OF 1917
REVOLVER.



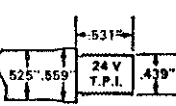
HI-STANDARD MODELS HB
& HD-M PISTOLS.



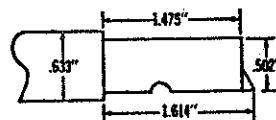
Smith & Wesson



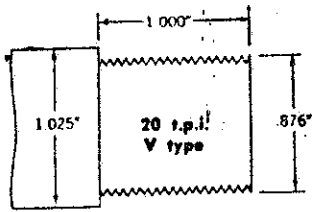
Colt D.A. Army Revolver



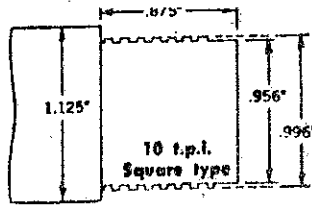
H & R 922 revolver



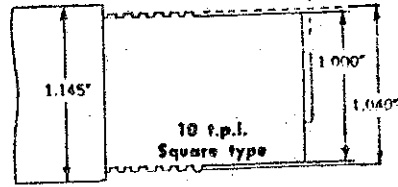
Hi-Standard Model HB pistol.



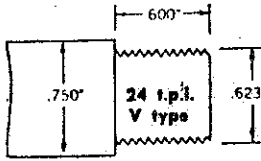
Winchester Models 1886 and 71 rifles



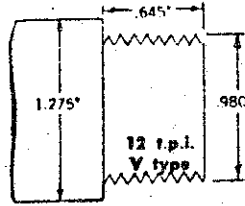
Standard gas-operated automatic rifle



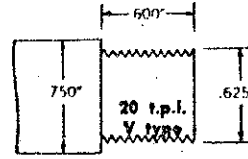
U. S. 1921 M1 and M2 rifles



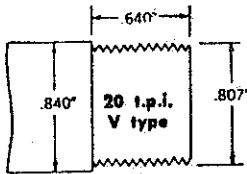
Winchester Models 1890, 1906, and 62 rifles



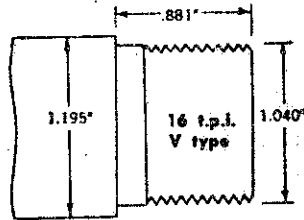
Mauser Model 1895, Swedish Mauser Model 94 carbine and 96 rifle



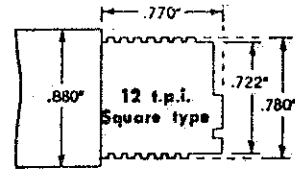
Remington Model 12 rifle



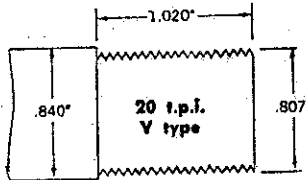
Winchester solid-frame Models 1892, 1894, 53, 55, 64, 65 rifles



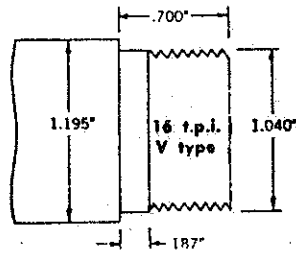
Remington Models 721 and 725 rifles



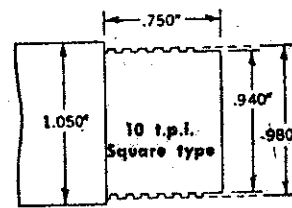
Marlin Models 1893, 36 and 336 rifles



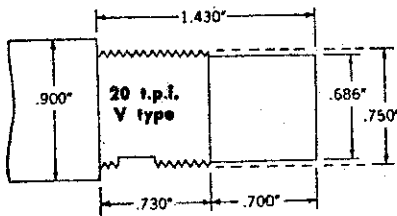
Winchester takedown Models 1892, 1894, 53 rifles



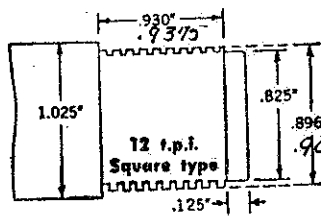
Remington Model 722 rifle



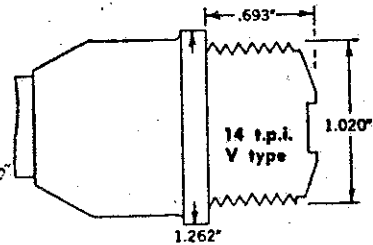
U. S. Krag (all Models, '92 '99) rifle



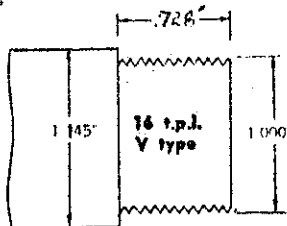
Winchester Model 52B and 52C rifles



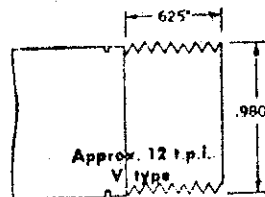
Savage Model 1899 rifle



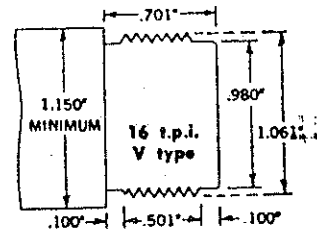
Steyr-Mannlicher Model 1895 straight-pull rifle



Winchester Models 54 and 70 rifles

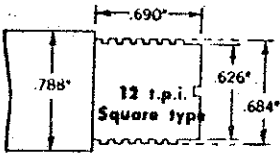


Mauser Model 1898 small ring, Mexican 1898 type, and Model G.33/40 rifles

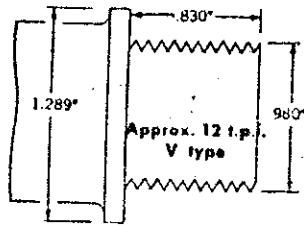


Weatherby Mark V rifle

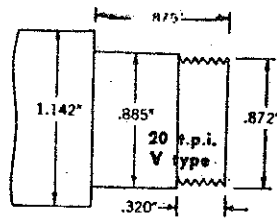
Marlin Models 1891, 1892, 1897, and 39 rifles



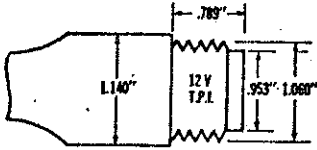
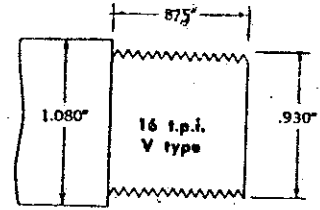
Mauser Model 1891 rifle



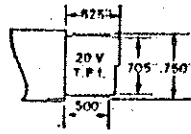
Remington Model 740, 742, and 760 rifles



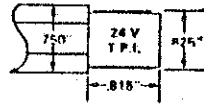
Winchester Model 1895 rifle



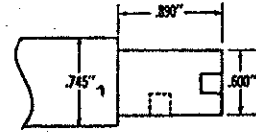
Austrian Steyr-Mannlicher Model 1890 straight-pull rifle.



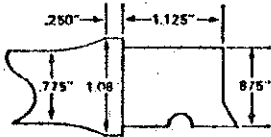
.30 U.S. Carbine



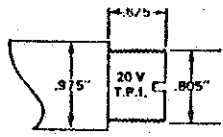
Colt .22 Lightning rifle



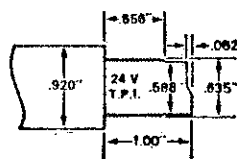
Colt Colter rifle.



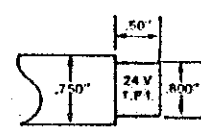
Winchester Model 77 .22 rifle



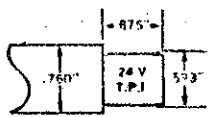
Winchester Model 43 rifle



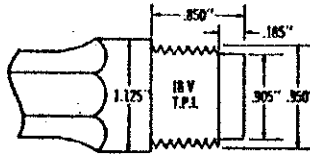
Winchester Model 75T rifle



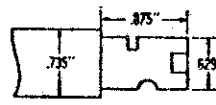
Winchester M 63, 63 rifles



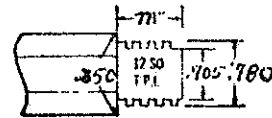
Winchester M 61 rifle



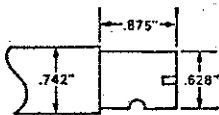
Marlin Model 1881 rifle.



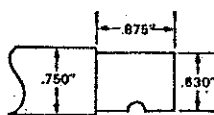
Marlin Model 81 rifle.



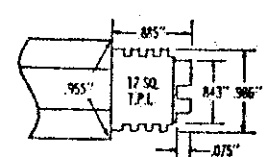
Marlin Model 84 rifle.



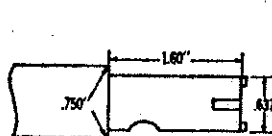
Marlin Model 56, 57, 80 rifles



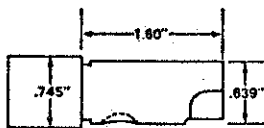
Marlin M 100 .22 rifle



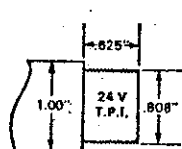
Marlin Model 95 rifle.



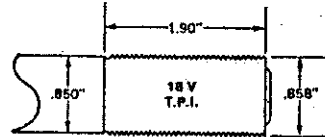
Mossberg Model 64M rifle.



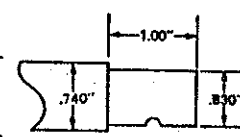
Mossberg Model 46 M rifle



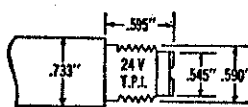
H & R Leatherneck .22 rifle



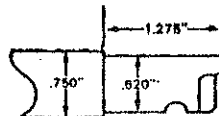
Savage Model 340, 342, Stevens 322, 325 rifles



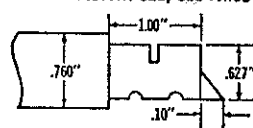
Savage M 842 .22 rifle



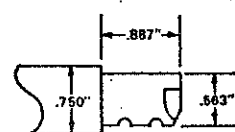
Savage Model 12 rifle.



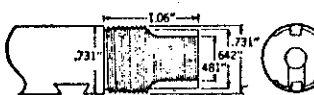
Stevens Viable Loader .22 rifle



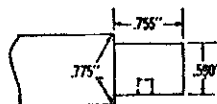
Stevens Model 87 rifle and all variations—Stevens Models 76, 85; Savage Models 6, 7; Springfield Models 76, 187, 188, 850.



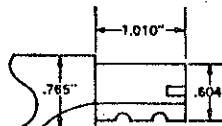
Noble Model 235 .22 rifle



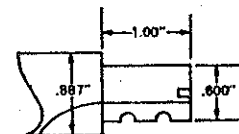
**20 V T.P.I.
Remington Model 24 .22 rifle
Browning .22 Auto rifle**



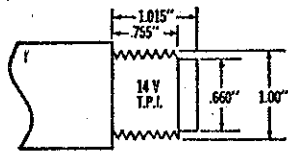
Remington Model 514 rifle.



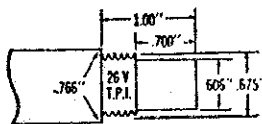
**Remington 500
Series .22 rifles**



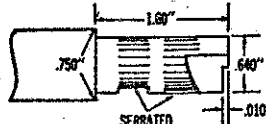
Remington M 513T rifle



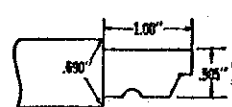
Snider Enfield rifle.



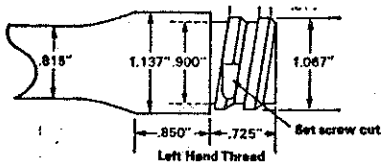
Remington Model 33 rifle.



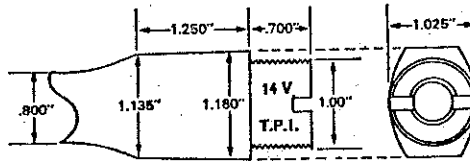
Hawthorne Warrior Model 825 rifle.



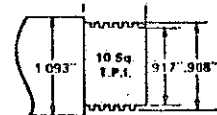
Page-Lewis Model D rifle.



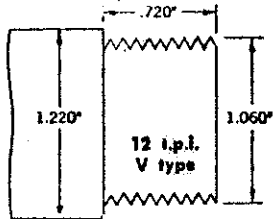
Model 1905 Ross rifle



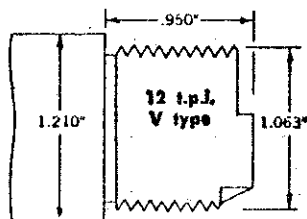
Martini-Henry .577/450
Martini-Enfield .303



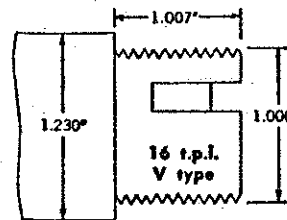
M 1 Garand



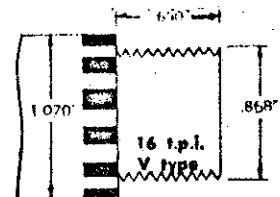
Mannlicher-Schoenauer rifle



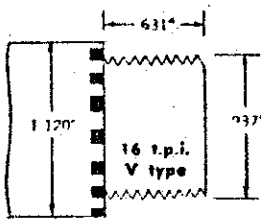
Dutch Mannlicher Model 1895 rifle



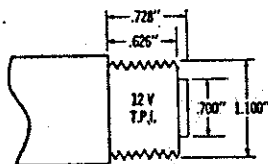
Gatling Gun



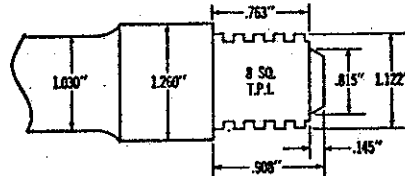
Browning machine gun



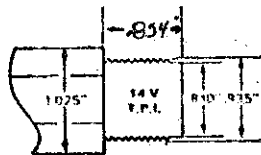
U. S. 1917 Browning machine gun



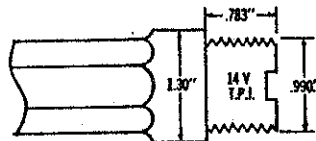
FN Mauser single-shot action (cal. .222 Remington).



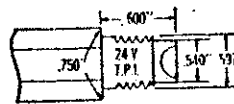
Starr single-shot carbine.



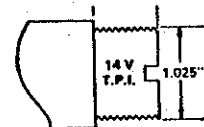
Swiss Vetterli .41 rifle



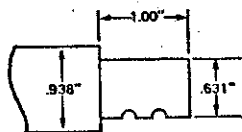
Dutch Beaumont rifle.



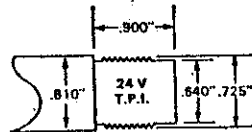
Premier slide-action rifle.



Dealey & Edge action (British single shot)



Stevens M 415 rifle



Mossberg Model 80 .410 shotgun