

# RECORD OF SURVEY

IN THE CITY OF PASADENA, COUNTY OF LOS ANGELES, STATE OF CALIFORNIA

BEING A INITIAL SURVEY OF LOT 8, TRACT NO. 8099 AS PER MAP  
RECORDED IN BOOK 131 PAGES 68 TO 82 OF MAPS, RECORDS OF SAID COUNTY

## SURVEYORS STATEMENT

THIS MAP CORRECTLY REPRESENTS A SURVEY MADE BY ME OR UNDER MY DIRECTION IN CONFORMANCE WITH THE REQUIREMENTS OF THE PROFESSIONAL LAND SURVEYORS ACT AT THE REQUEST OF GEORGE MARTIN IN SEPTEMBER OF 2010.

OCTOBER 3 2010

PAUL M. PLUTAE

L.S. 4722



## BASIS OF BEARINGS

THE BEARINGS SHOWN HEREON ARE BASED ON THE BEARING OF N 58° 42' 30" E OF THE NE LINE OF LOTS 7, 8, 9 AND 10 ALSO BEING THE NE LINE OF SAID TRACT NO. 8009

## COUNTY SURVEYORS STATEMENT

THIS MAP HAS BEEN EXAMINED IN ACCORDANCE WITH SECTION 8766 OF THE PROFESSIONAL LAND SURVEYORS ACT THIS

DAY OF \_\_\_\_\_ 2010

COUNTY SURVEYOR:

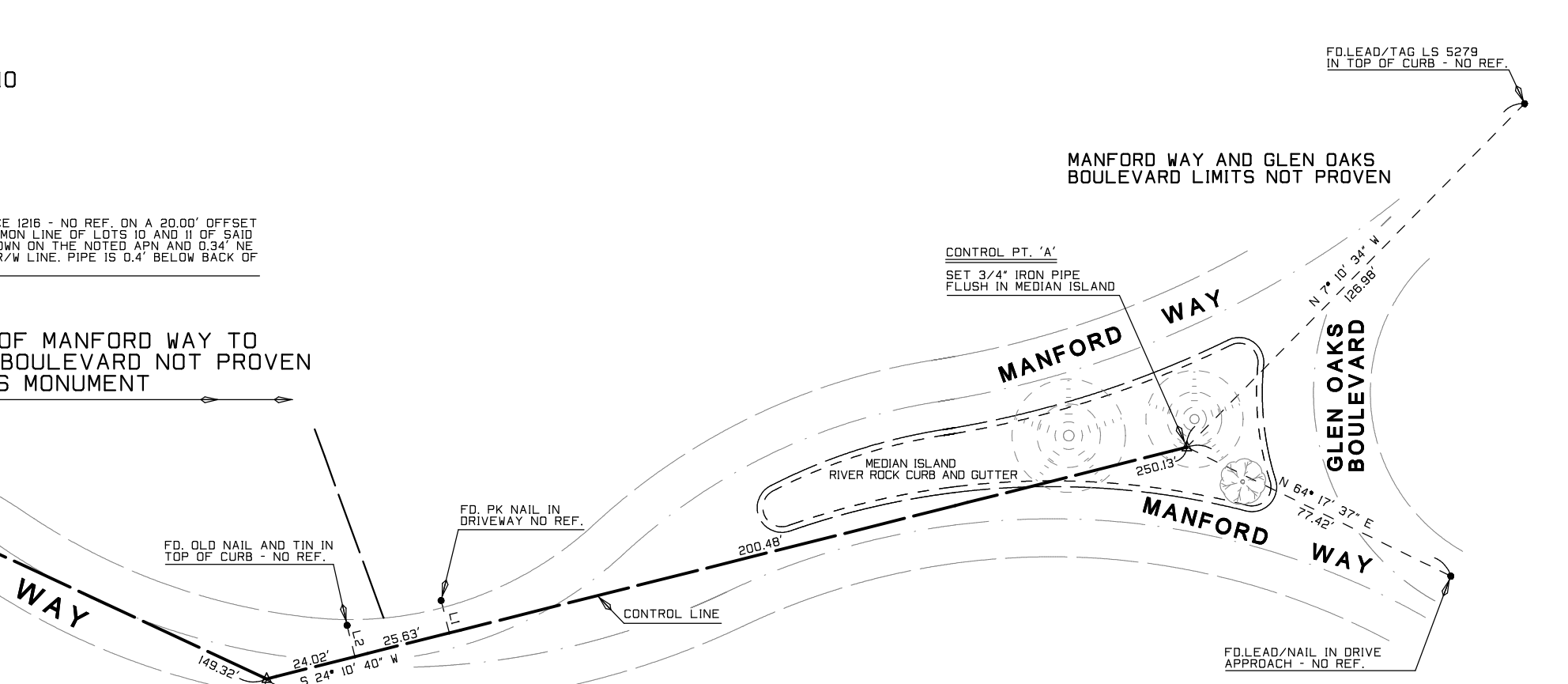
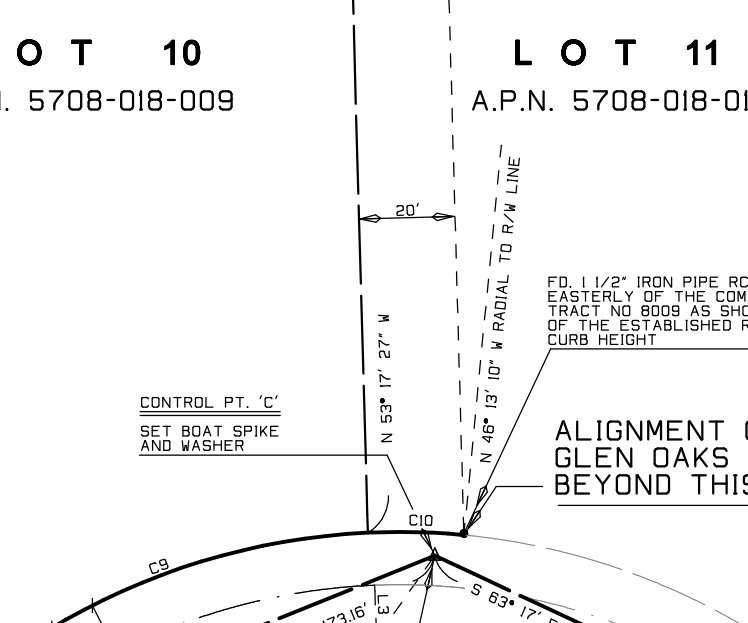
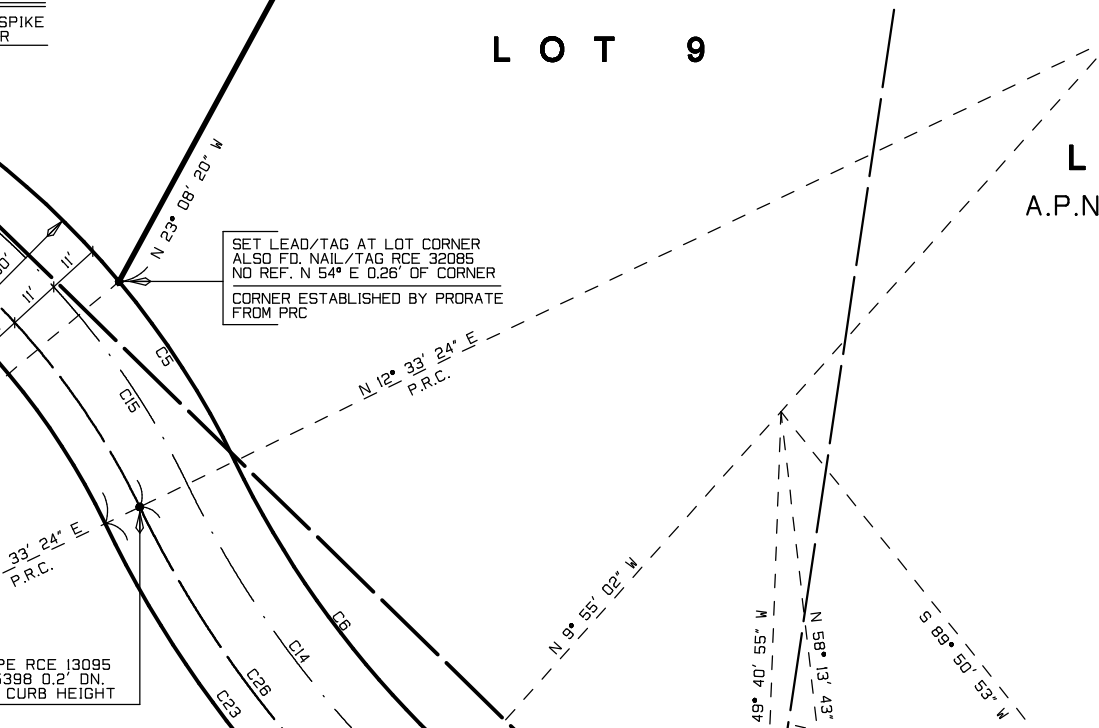
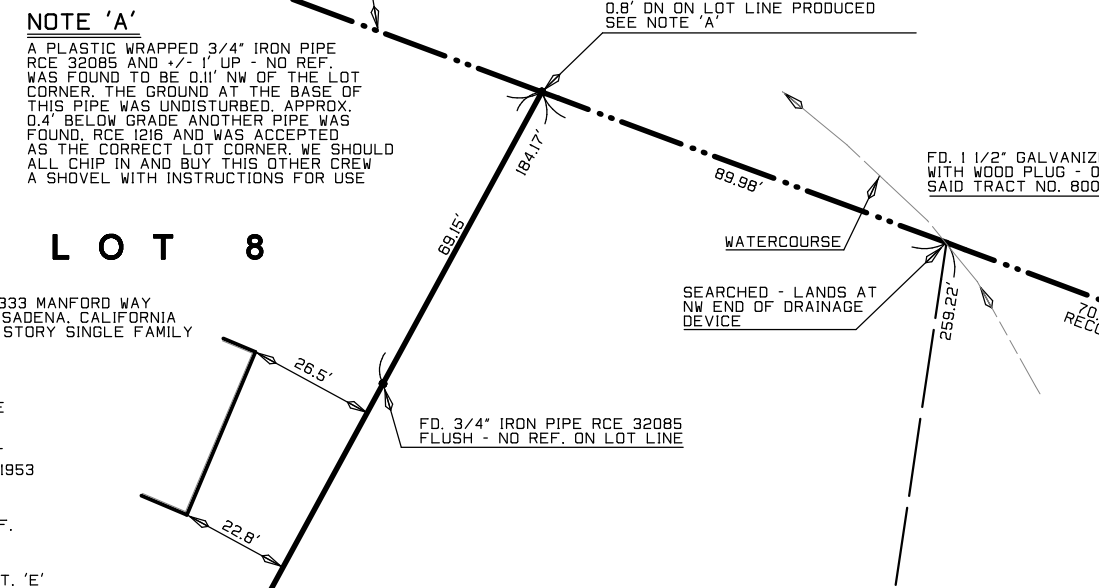
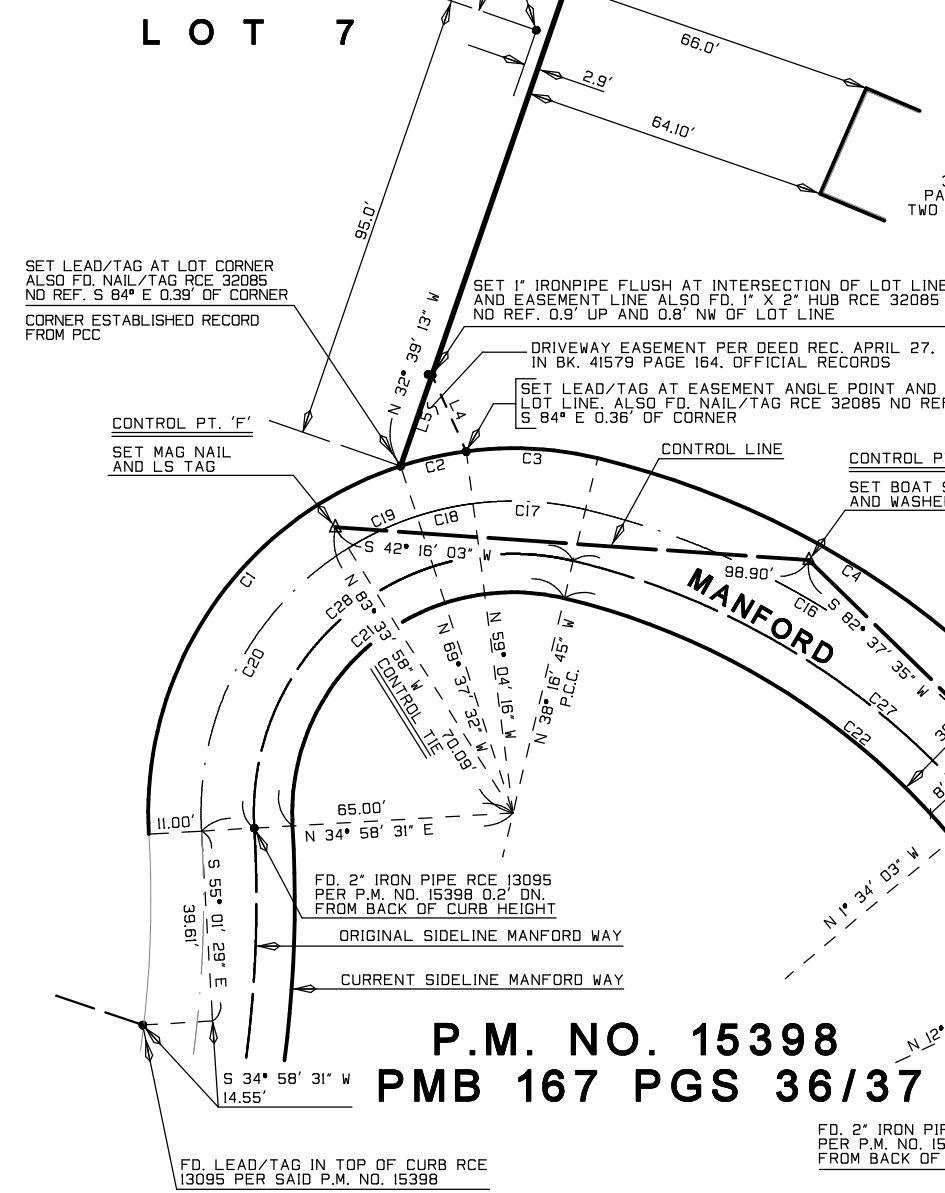
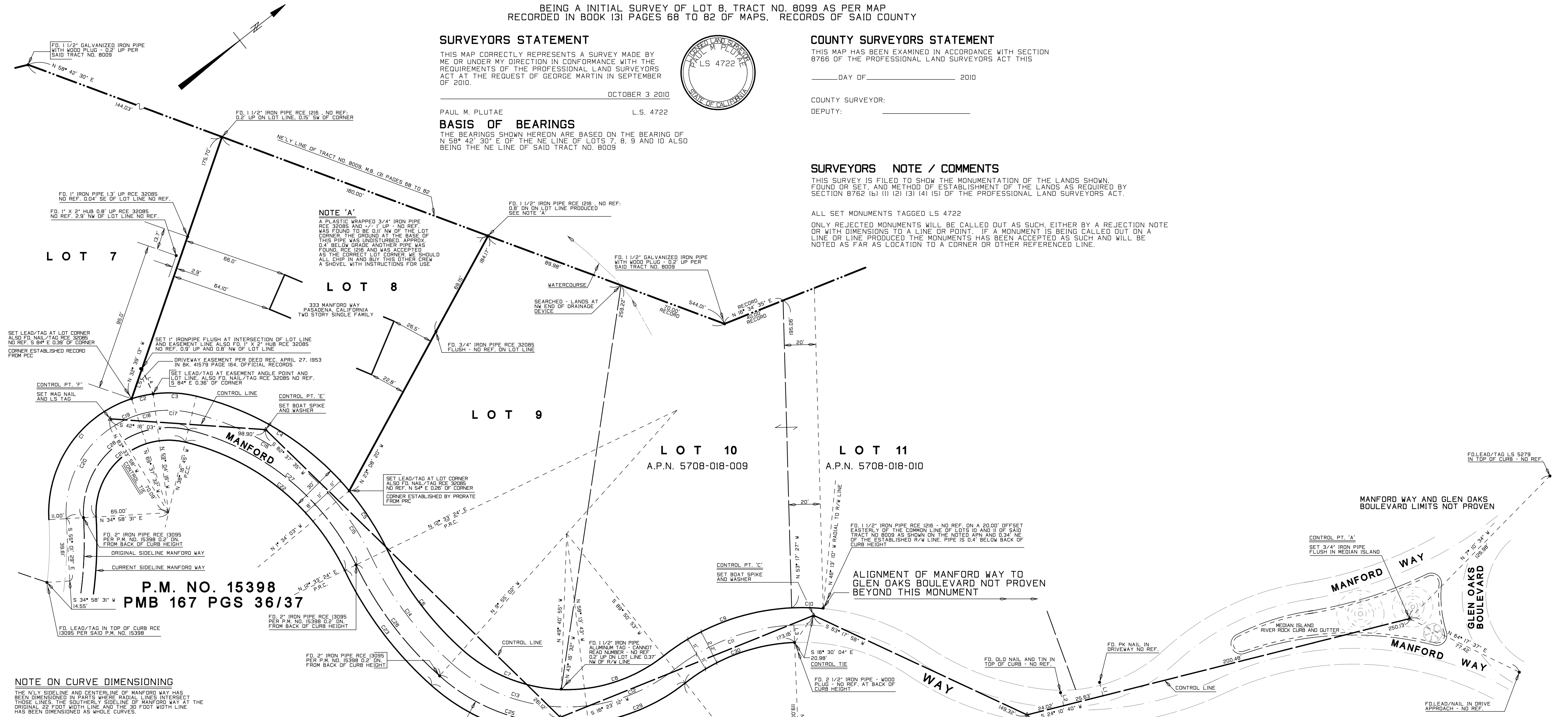
DEPUTY:

## SURVEYORS NOTE / COMMENTS

THIS SURVEY IS FILED TO SHOW THE MONUMENTATION OF THE LANDS SHOWN, FOUND OR SET, AND METHOD OF ESTABLISHMENT OF THE LANDS AS REQUIRED BY SECTION 8762 (b) (1) (2) (3) (4) (5) OF THE PROFESSIONAL LAND SURVEYORS ACT.

ALL SET MONUMENTS TAGGED LS 4722

ONLY REJECTED MONUMENTS WILL BE CALLED OUT AS SUCH, EITHER BY A REJECTION NOTE OR WITH DIMENSIONS TO A LINE OR POINT. IF A MONUMENT IS BEING CALLED OUT ON A LINE OR LINE PRODUCED THE MONUMENTS HAS BEEN ACCEPTED AS SUCH AND WILL BE NOTED AS FAR AS LOCATION TO A CORNER OR OTHER REFERENCED LINE.



**P.M. NO. 15398**  
**PMB 167 PGS 36/37**

**NOTE ON CURVE DIMENSIONING**  
THE N.E. SIDELINE AND CENTERLINE OF MANFORD WAY HAS BEEN DIMENSIONED IN PARTS WHERE RADIAL LINES INTERSECT THOSE LINES. THE SOUTHERLY SIDELINE OF MANFORD WAY AT THE ORIGINAL 25 FOOT WIDTH LINE AND THE 30 FOOT WIDTH LINE HAS BEEN DIMENSIONED AS WHOLE CURVES.

Curve	Δ	R	L	Line	Direction	Distance
C1	75°23'57"	76.00	100.01'	L1	N 65° 49' 20" W	8.81'
C2	10°33'16"	76.00	14.00'	L2	N 65° 49' 20" W	8.51'
C3	20°47'32"	76.00	27.58'	L3	N 53° 57' 58" W	11.00'
C4	38°42'42"	181.08'	116.03'	L4	N 75° 52' 49" W	17.37'
C5	14°07'27"	181.08'	44.64'	L5	N 32° 39' 13" W	20.00'
C6	23°28'26"	203.98'	80.01'			
C7	39°45'53"	98.97'	68.69'			
C8	40°28'14"	98.97'	69.91'			
C9	39°47'13"	141.00'	88.07'			
C10	8°08'42"	141.00'	20.04'			
C11	38°11'09"	130.00'	82.10'			
C12	31°55'25"	109.97'	61.27'			
C13	48°18'41"	109.97'	82.73'			
C14	22°28'26"	244.98'	84.33'			
C15	14°07'27"	170.08'	41.93'			
C16	38°42'42"	170.08'	108.98'			
C17	23°47'32"	85.00'	23.59'			
C18	10°33'16"	85.00'	11.97'			
C19	13°56'27"	85.00'	15.62'			
C20	61°27'31"	85.00'	69.72'			
C21	108°44'48"	46.00'	85.70'			
C22	50°50'09"	151.08'	134.05'			
C23	22°28'26"	233.98'	81.78'			
C24	48°18'57"	128.97'	108.76'			
C25	48°18'41"	120.97'	102.00'			
C26	22°28'26"	225.98'	88.64'			
C27	50°50'09"	159.08'	141.15'			
C28	108°44'48"	54.00'	100.81'			
C29	31°55'25"	120.97'	67.40'			
C30	38°11'09"	119.00'	75.16'			