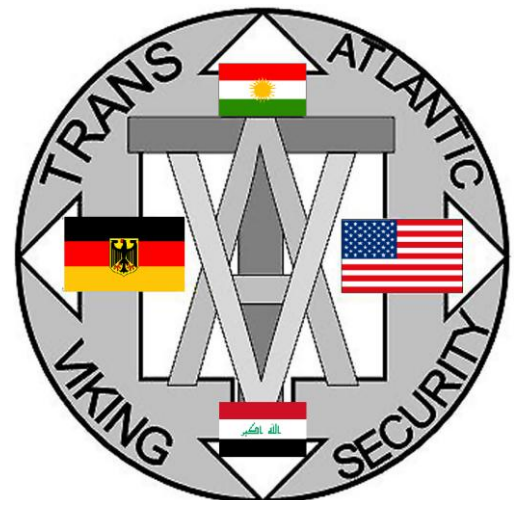


Quotation No:HT0919

Date: Jan.07.2014

Issued by: Issued to:

GSE 15 Herbert A. Lang Impl. Partner UNHCR
Director of Operations / owner / CEO
Trans Atlantic Viking Security
International Zone, Baghdad Iraq
APO AE 09348 and Erbil
Phone: +491733517669 or +964-771-222-8047 Asia Cell
E-Mail: lang.he@web.de or hlang@tav-security.com
Skype: lang.he
www.tav-security.com
Postal: GSE 15 Herbert A. Lang



B6 - TOYOTA LAND CRUISER 200 GX-R, 4.5 Turbo Diesel, Auto



Toyota Land Cruiser 200 GX-R shown with optional Bull-Bar and Winch.

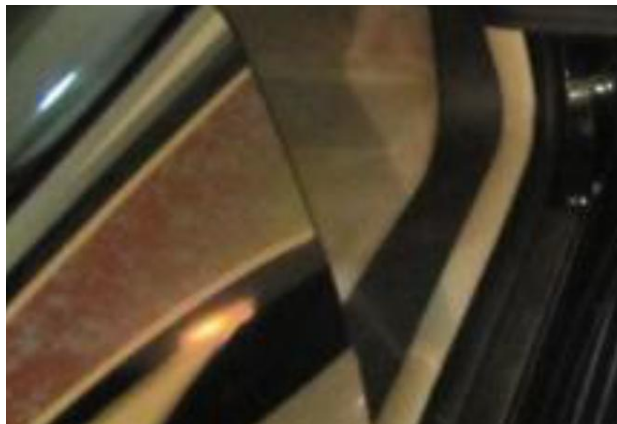
Optional features: Under vehicle IED protection, armored bonnet, quick reaction gun ports, emergency escape roof hatch, emergency opening of rear door, skid plate, door blast locks, strobe lights, armored radiator protection, bull bar, winch, heavy duty rear bumper, snorkel, heavy duty roof rack, engine compartment fire suppression system, wheel arch fire suppression system, night vision camera, camera systems, communication systems, heavy duty brake systems and much more...

PROTECTION LEVEL B6 LEVEL		WEAPON	CALIBER (mm)	PROJECTILE	STRIKES	DISTANCE ±10 (mm)		
TYPE		MASS ±0,1 (g)		RANGE (m)		VELOCITY ±10 (m/s)		
BR1	Rifle	0,22 LR	L/RN	2,6 g	10,00	360	3	120
BR2	Hand gun	9 mm Luger	FJ ¹ /RN/S C	8,0 g	5,00	400	3	120
BR3	Hand gun	0,357 Magnum	FJ ¹ /CB/SC	10,2 g	5,00	430	3	120
BR4	Hand gun	0,44 Rem. Magnum	FJ ² /FN/S C	15,6 g	5,00	440	3	120
BR5	Rifle	5,56 x 45*	FJ ² /PB/S C	4,0 g	10,00	950	3	120
BR6	Rifle	7,62 x 51	FJ ¹ /PB/SC	9,5 g	10,00	830	3	120

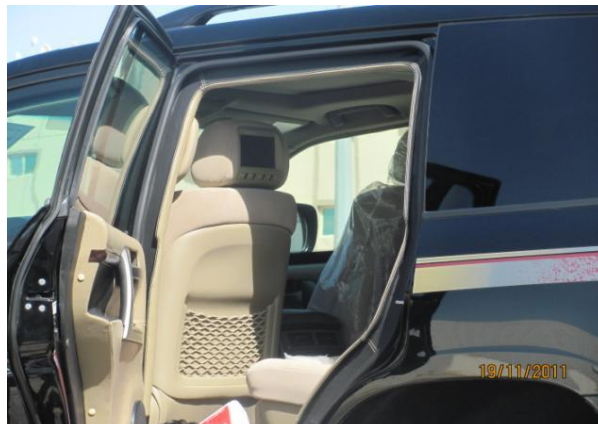
TLC 200 luggage compartment.



TLC 200 rear armored door.



TLC 200 side door trim.



TLC 200 door - full overlap and bullet catcher.

TOYOTA LAND CRUISER 200 GX-R

4.5 L V8, Turbo Diesel, Auto T Engine	4461cc
Valve	32-valve
Cylinder	8-cylinder, V8
Max Output	232Hp @ 3200rpm
Max Torque	62.7KgM @ 1800-2200rpm
Fuel System	Common Rail
Transmission	Six-speed automatic transmission (with Super ECT+Shift Lock)
Off road performance	Full time four wheel drive
Tyres & wheels	285/65R - 17"
Suspension Front	DBL wishbone
Suspension Rear	Coil spring
Brake	Ventilated disc
Fuel tank capacity	138L
Length (mm)	4950
Width (mm)	1970
Height (mm)	1890
Wheel Base (mm)	2850

OTHER SPECIFICATIONS:

EXTERIOR

Bumper FR/RR - color keyed
Mud guards FR/RR
Windshield glass - green + top shade
Spoiler
Side stripe - GX design
High mount stop lamp
Outer mirrors - color keyed - chrome
Outer mirrors - power
Door handles - chrome

ELECTRICAL

Wiper FR - intermittent
Wiper RR - intermittent
Power window
Power door lock
Keyless entry - smart entry + push start
Window defogger
Meter illumination control
Illuminated Entry System - with + scuff plate illum.
Radio - AM/FM

Side step - aluminum + cover	Cassette Stereo - with 6 CD/MP3 changer, 6 speakers
FR guard/Bull bar - CLR keyed bumper guard with extension	Power antenna - glass integrated
AC/Heater - FR auto, RR manual/with	
INTERIOR	Cruise control
Console box - with rear AC vent	Cool box
Wood grain panel - with (instrument panel, trim)	
Wood steering wheel + gear knobs	OTHERS
Fuel lid opener	Parking sensors - 2+3 (FR + RR)
Seat material - fabric	Headlamps - xenon type (hi beam)
FR seat belt - 3PELRx2+PT+FL	Head lamp cleaners - retractable type
Rear seat belt - 3PELRx6	Chrome Rear Lamp Garnish
Headrest - 3(2nd row) + 3(3 row)	4x4 Transfer switch
Split foldable seat - 60:40+reclining+slide	Bluetooth telephone kit - engine immobilizer
Rear seat, 3rd row - 50:50 transverse	Floor mats
Adjustable seat belt anchor - front and 2nd row only	Front fog lamp
Tachometer	Pintle Hook
FR spot lamp - front personal lamp	Spare wheel carrier / cover type - door mounted / hard
Inner rear view mirror - electro chromic	Gold plated grill & back door garnish
Sun visor - D+P	Combination meter
Vanity mirror - D+P with illumination	Compass
Seating capacity - 8	Roof rail
Headlamp leveling function	
Auto head lamp cut off	
Impact sensing fuel cut off system	

ARMORING CONFIGURATION B6:

SINGLE SHEET DOOR ARMORING – for optimum blast survivability.

OVERLAPPING ARMOR – on all doors and bullet catcher to prevent penetrations into the cabin from direct and angled shots.

HEAVY DUTY DOOR HINGES – bolted **directly onto Ballistic Steel** not the OEM vehicle.

FIREWALL – with very few pieces and overlapping armored steel.

REINFORCED A, B & C POSTS - heavy duty door hinges allows the weight of the armored doors to be transferred directly to the reinforced ballistic steel posts.

TRANSPARENT ARMOR – with certified ballistic multilayer glass and polycarbonate.

ENGINE CONTROLE UNIT & BATTERY PROTECTION – protected to level B6.

ROOF & FLOOR - protected to level B6.

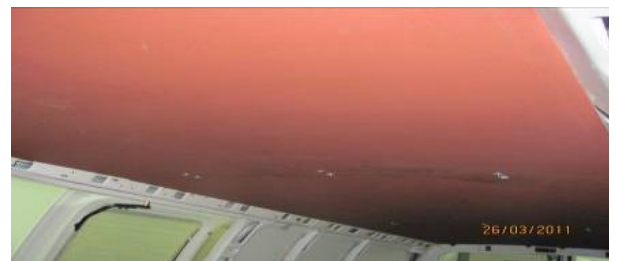
FUEL TANK - protected to level B6.



RUN-FLATS - in all tires including spare wheel meeting NATO requirements of 50km@50km/h.



Floor armor



Roof armor

• **SUSPENSION** - upgraded and includes heavy duty springs, heavy shock absorbers, steering damper, reinforced sway bars & bushes for optimum performance.

• **FINISHING QUALITY** – is made to match the OEM design with required modifications.

• **FIRST AID KIT** – fire extinguisher, warning triangle and anti IED mesh in the exhaust included.

QTY: Quoted Item P/Unit Total USD Terms

B6

TOYOTA LAND CRUISER 200 \$145.000 EX-Kurdistan incl. License Plates

Note: Airbags may be disconnected on an armored vehicle due to optimum security.

VALIDITY:

- 14 days – terms may change, please confirm on order

DELIVERY:

6 to 8 weeks from order

BANKING DETAILS:

Bank Name: Sparkasse Vilseck Germany

Account name: Herbert A. Lang

Address: Germany

Swift Code: IBAN DE19752500000190762278

BIC : BYLADEM1ABG

TERMS:

- The Buyer shall make the payments by check (UAE only) or Electronic Funds Transfer.
- Cash payments shall not be accepted.
- 50% of the total contract value in advance and the remaining before the delivery from TAV.
- The End-User Statement is required from the Buyer for the export clearance of the vehicle along with other documents mentioned.
- Freight quotation, if any is valid for the period of 14 days from the contract/quotation date.
- IF the buyer undertakes to export the vehicle (FCA delivery, Incoterms 2000), a refundable Customs Export Deposit in the amount of 5% of the total contract value is payable to TAV-SECURITY before the shipment. The Buyer is responsible to provide TAV-SECURITY with the Export Documentation properly filled out and stamped. TAV-SECURITY shall apply for the refund of the 5% deposit, and will return the funds to the Buyer upon receipt of the funds back from the Customs.
- Total contract value is due within a maximum of 15 days from notification of completion of the vehicles. Should the Buyer fail to produce the amount payable according to the sales agreement, the 5% of the outstanding amount shall be billed on a monthly basis, at the beginning of each month. Additionally, the vehicle storage fees will be billed in the amount of 50.00 USD per vehicle, per day.

LIABILITY & DAMAGES:

- Any future liability to the buyer/third party under this contract will be limited to the warranty terms as per attached Appendix B. Seller will not be liable for any other future claims. Any disputes as be as per UAE laws.

DOCUMENTS:

- End User Statement/Certificate by the Importer
- NOC from Consulate of Importing country in UAE

SALES CONTACT:

GSE 15 Herbert A. Lang Impl. Partner UNHCR

Director of Operations / co owner / CEO

Trans Atlantic Viking Security

International Zone, Baghdad Iraq

APO AE 09348 and Erbil

Phone: +491733517669 or +964-771-222-8047 Asia Cell

E-Mail: lang.he@web.de or hlang@tav-security.com

Skype: lang.he

www.tav-security.com under construction

Postal: GSE 15 Herbert A. Lang

APO AE 09348

ACKNOWLEDGEMENT/ACCEPTANCE:

We have read and understood the terms and conditions contained herein, and accept this agreement: