



985-651-3007 ■ www.landcrafthomes.com

PRICELIST

MODEL HOME PRICING		
PLAN	MODEL NAME	INVESTMENT
1295	River Ranch	\$127,900.00
1413	O'Neil	\$138,900.00
1542	St. Martin	\$144,900.00
1730	Ridgewood	\$149,900.00

For more information please contact:



Sommer
504-416-9294

Office 985-651-3007

Please visit our model home in Cole's Landing
731 Belle Pointe Blvd. Drive, LaPlace, La 70068.



*Plan number indicates estimated square feet of living area. Premiums may be required on certain home sites. Standard homesite 60' X 100'. This price quote is subject to change without notification. Prices effective 8-21-10.



RANCH SERIES ■ STANDARD FEATURES

INTERIOR FEATURES

Wall to wall plush carpeting
 Raised panel interior doors
 Orange peel ceilings
 Telephone jack in each bedroom and kitchen
 Cable jack in master bedroom and living room
 Decorator light fixtures
 Ceiling fan in Family Room
 Smoke detectors
 Ventilated shelving in closets
 Designer Door Knobs
 Pantry Areas

KITCHEN FEATURES

Hot point appliances
 30" Electric range with coil burners
 Disposal
 Dishwasher
 Delta washerless faucet with sprayer
 Stainless steel 6" double bowl sink
 Waterline for icemaker
 Formica countertops with backsplash
 Furniture finished cabinets

BATHROOM FEATURES

Delta washerless faucets
 5' oval garden tub with marbella trim (selected models)
 Formica vanity tops with backsplash
 Plate glass mirrors above vanities
 Furniture finished cabinets in 2 colors
 Heater and exhaust fan

EXTERIOR FEATURES

Two weatherproof electrical outlets
 Concrete driveway and entry walk
 Two outside water faucets
 Low maintenance finishes
 Vinyl siding on rear, entry, soffit, fascia, sides
 16' steel garage door
 "Traditional" stucco (selected models)

ENERGY EFFICIENCY

High efficiency 13 SEER air conditioner
 R-22 Blown insulation in ceilings
 R-19 Batt insulation in sloped ceilings
 R-11 Batt insulation in exterior walls
 Roof ridge vent system
 High recovery electric water heater
 Polycell foam in all wall penetrations
 Double insulated windows (with screens)
 Insulated steel entry doors

QUALITY CONSTRUCTION

One year new home warranty
 Five year structural warranty
 Engineered wall system to ensure sound construction
 Kiln dried lumber for framing and decking
 Stick-built on site
 16" on-center studs, load bearing walls
 12-2 electrical wire
 Engineered post tension foundation
 American-made kiln-fired clay bricks
 30-year warranted dimensional roof shingles
 Termite treated sub-soil
 3000 PSI concrete foundation
 Built to New IRC Code
 Meets 120 MPH Wind Code
 Located in NON-FLOOD ZONE

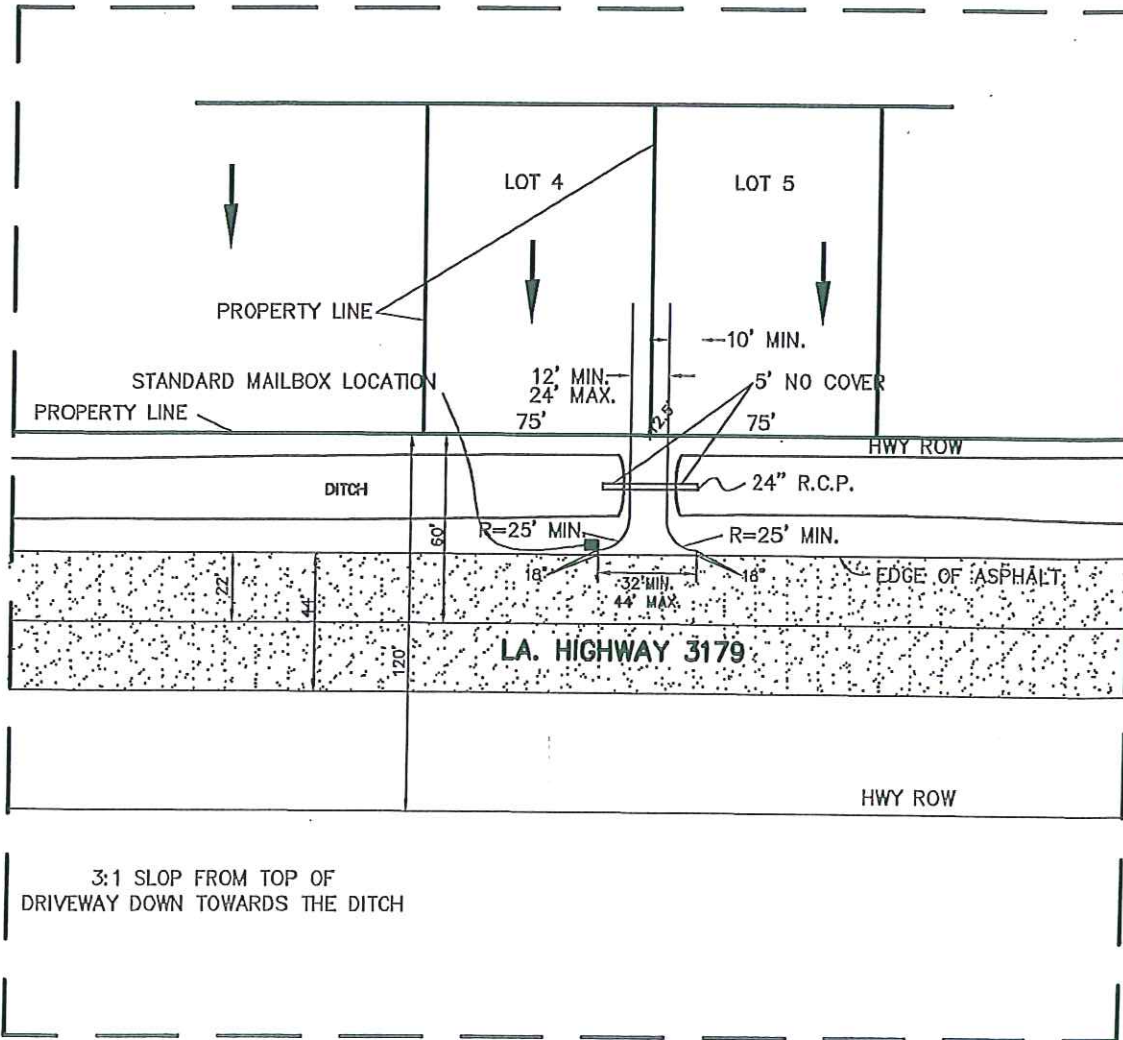


Landcraft Homes

Optional Features for RIVER RANCH

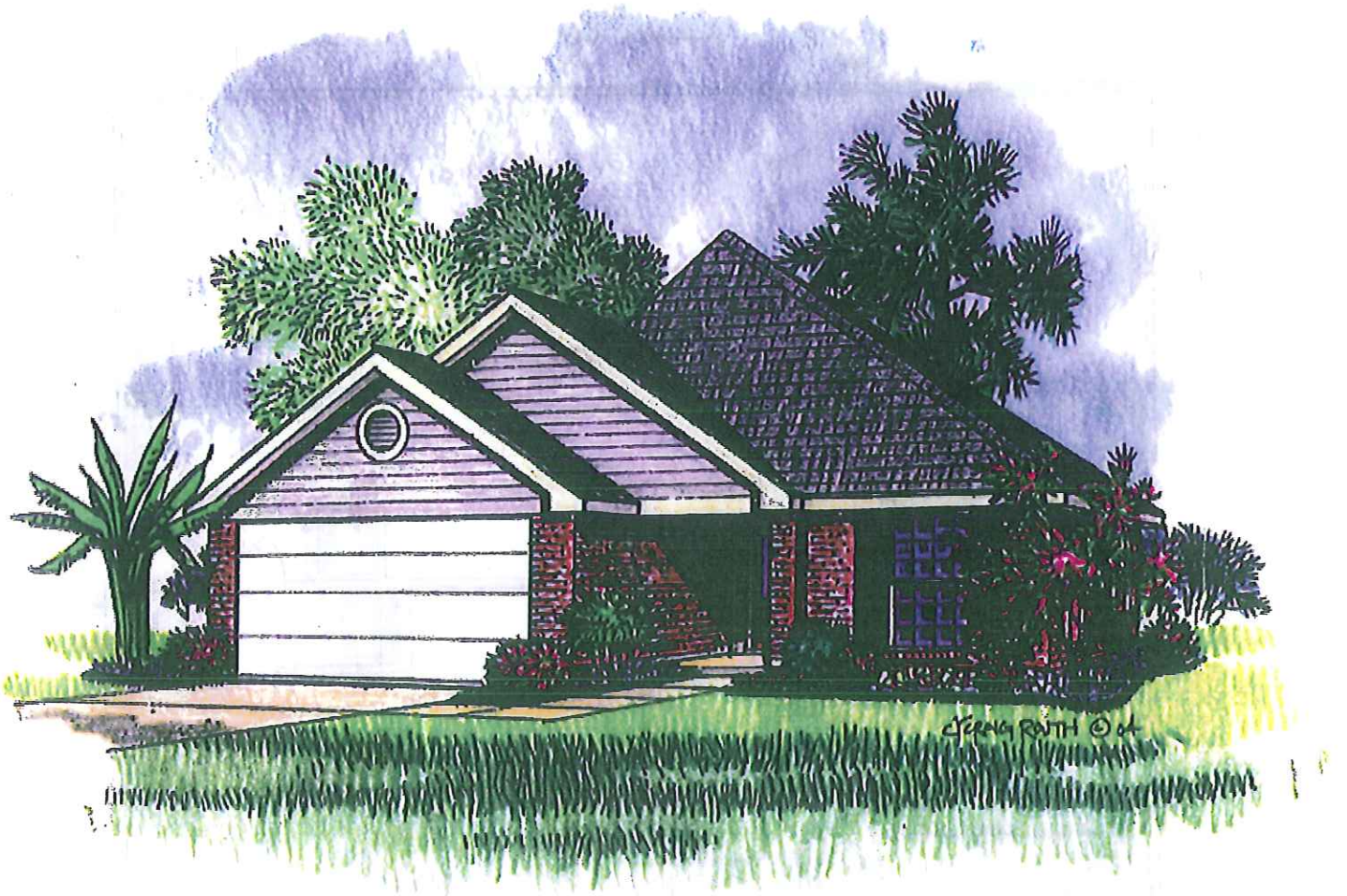
Double trey with one piece crown	\$2800
Covered patio	\$50.00/sf
Patio slab	\$8.00/sf
Sheetrock and painted garage interior	\$2500
Ceiling fan wired and installed	\$150
Recessed can/soffit can/eyeball can (per light)	\$125
Floodlight	\$175
Additional cable, phone, electrical outlet	\$100
Security system with two key pads	\$1800
Pre-wire alarm system	\$550
Automatic garage door opener	\$500
Crown molding on kitchen cabinets	\$600
8" kitchen sink	\$150
5' jetted tub	\$1200
Double vanity in master bath	\$950
Carpet insert with tiled hallway	\$2500
Ceramic tile	\$7.00/sf
Wood flooring	\$9.25/sf
Laminate flooring	\$8.00/sf
Wood burning fireplace	\$2800
2 piece crown in the foyer and living	\$1800
Microwave	\$550
Brick on the rear and sides of home	\$5900

Optional features and upgrades included with some floorplans. Not all upgrades are available for all floorplans. Pricing for changes made during the construction process may be higher if change is possible at time of request. Not all requests will be honored and are subject to administrative approval. 4-1-10



DETAIL "A"
(NOT TO SCALE)

TYPICAL DRIVE JOINT USE APRON DIAGRAM

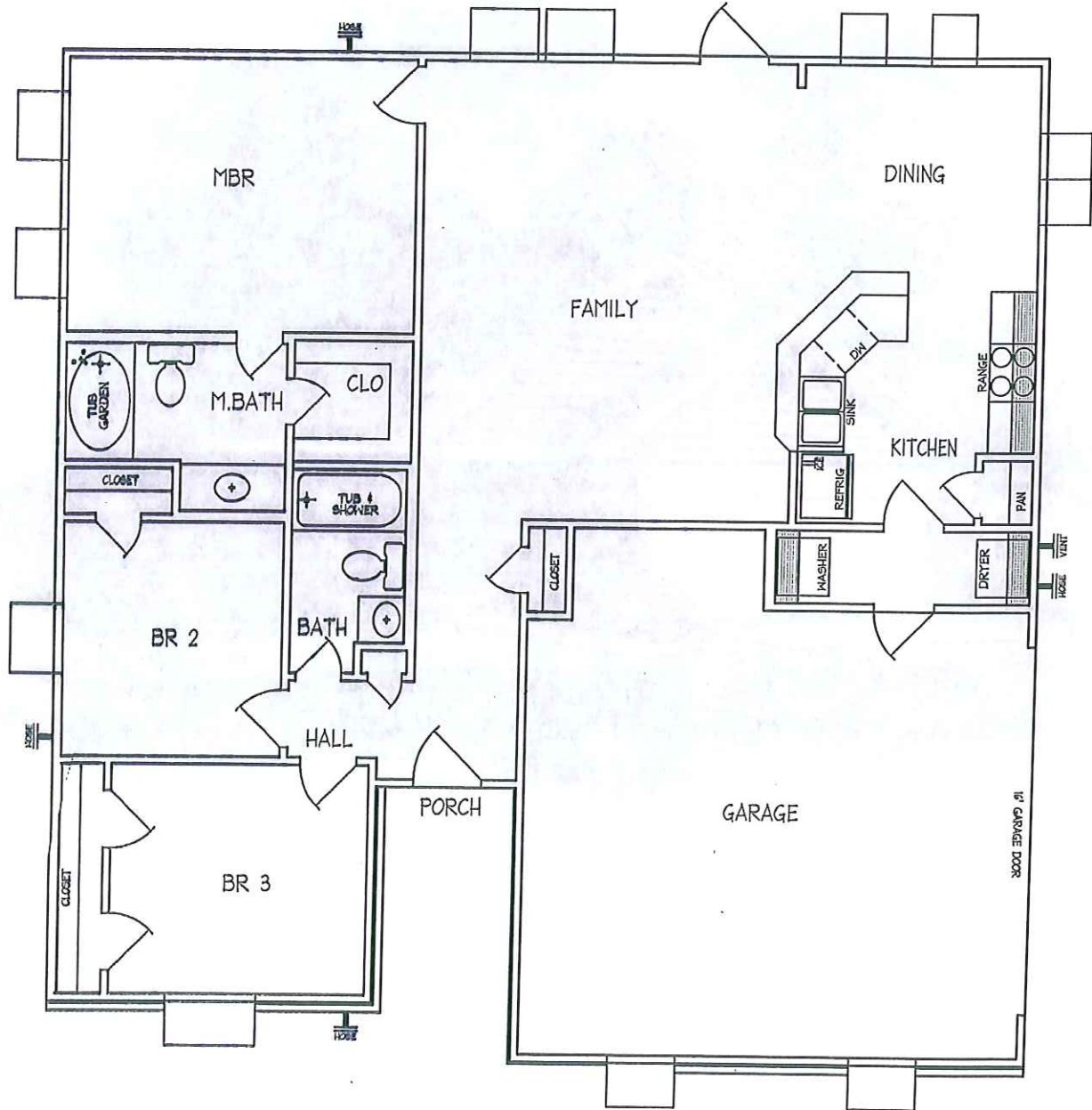


FRONT ELEVATION



LANDCRAFT H O M E S

MODEL 1295



The drawings depicting the outside of these homes may vary slightly. The layouts and sizes indicated on the floor plans are approximate, and may also vary slightly. Specifications, products, and prices are subject to change without notice.



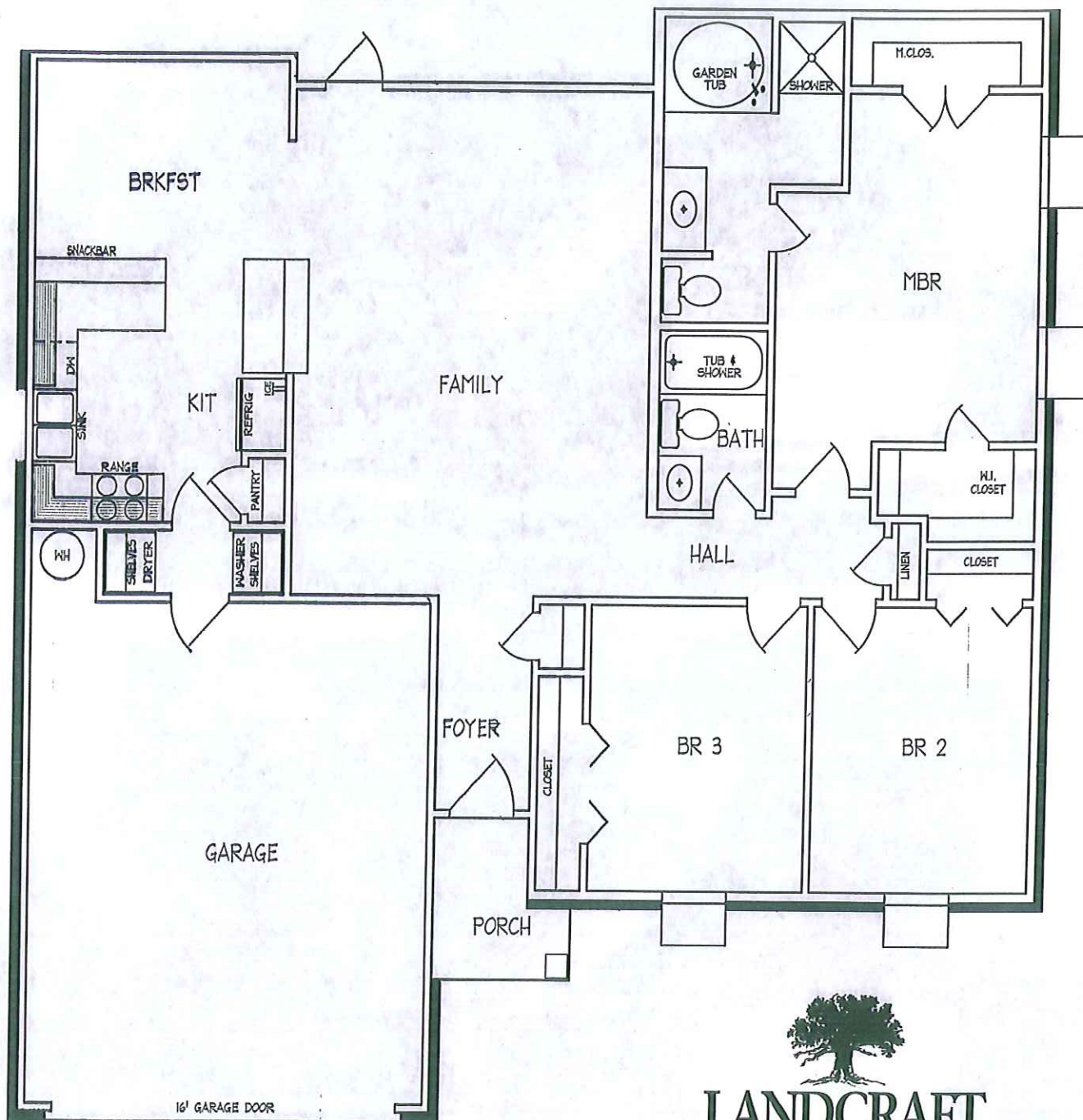
FRONT ELEVATIONS

Designer

COLLECTION

985-651-3007

www.landcrafthomes.com



**LANDCRAFT
HOMES**

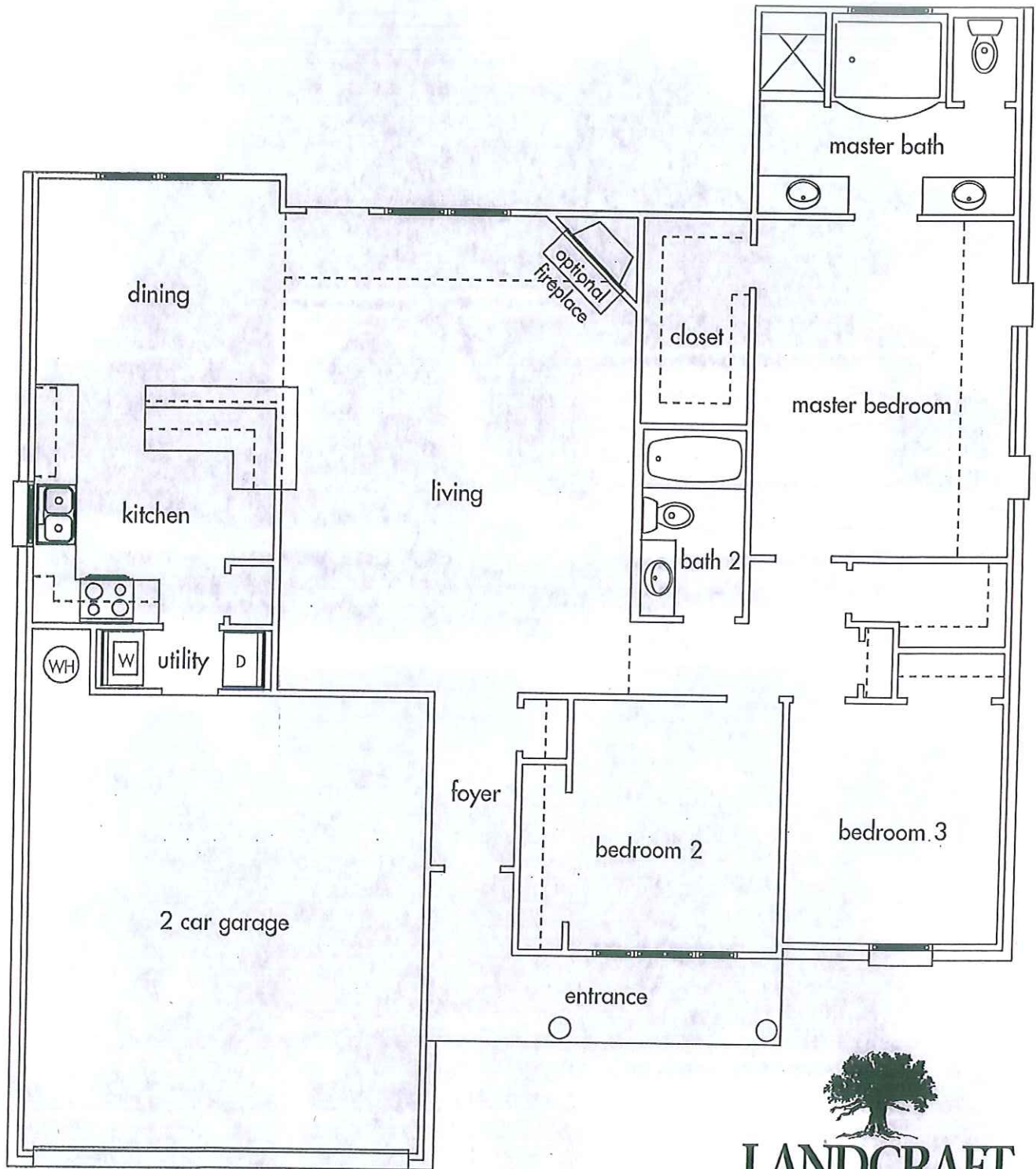
MODEL 1413



The drawings depicting the outside of these homes may vary slightly. The layouts and sizes indicated on the floor plans are approximate, and may also vary slightly. Specifications, products, and prices are subject to change without notice.



FRONT ELEVATIONS



**LANDCRAFT
H O M E S**

MODEL 1542-FLOOR PLAN



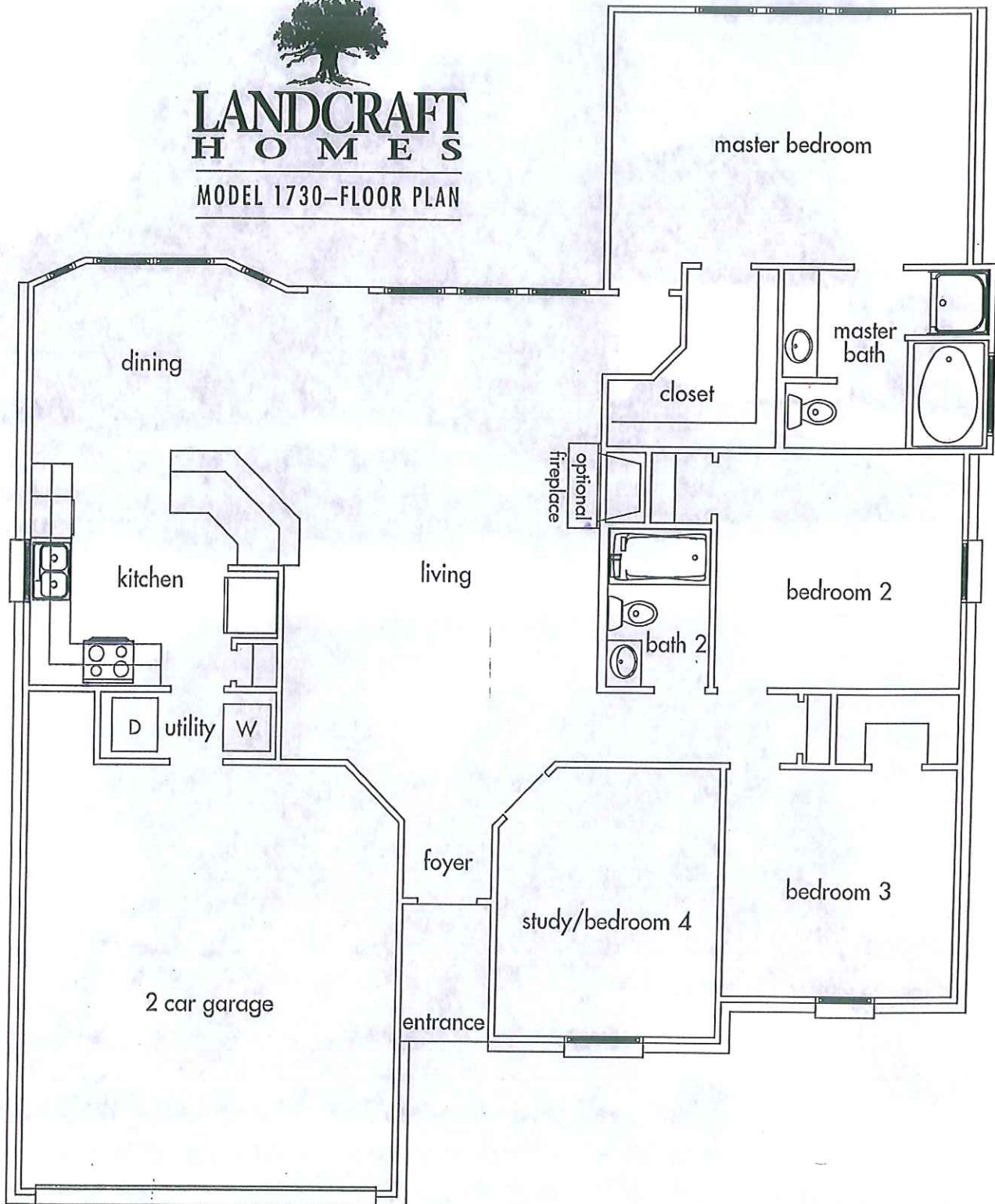
The drawings depicting the outside of these homes may vary slightly. The layouts and sizes indicated on the floor plans are approximate, and may also vary slightly. Specifications, products, and prices are subject to change without notice.



FRONT ELEVATIONS



**LANDCRAFT
H O M E S**
MODEL 1730-FLOOR PLAN



The drawings depicting the outside of these homes may vary slightly. The layouts and sizes indicated on the floor plans are approximate, and may also vary slightly. Specifications, products, and prices are subject to change without notice.