

# The Quest Motor Group Citroën Classic Challenge 2012 **Route Plan v4.0**

(drafted 10/04/2012)

## DAY ONE

**Wednesday, May 9th**

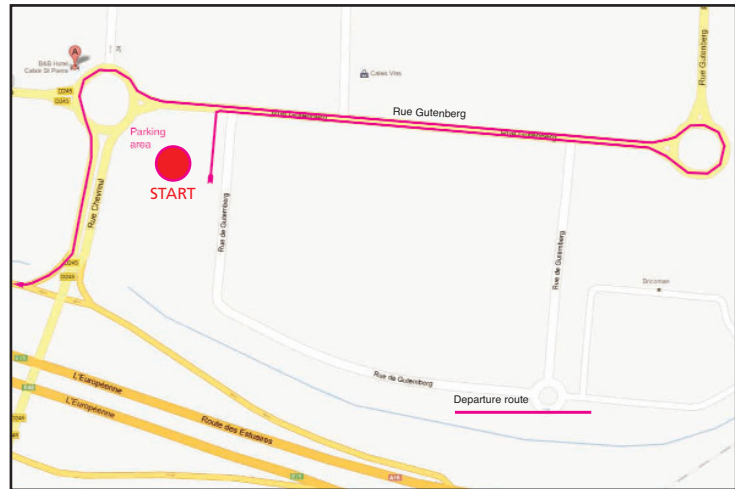
**Start: 9:30 am**

**Distance: Approx 290 miles, 7.5hrs**

### **START POINT:**

I have chosen a car park close to a convenient Calais Hotel - B&B Hotel Calais St. Pierre: [http://www.hotel-bb.com/hotel\\_info?hotelId=4221](http://www.hotel-bb.com/hotel_info?hotelId=4221) for those wanting to stay over on the night of the 8th.

An alternative hotel option for the night of the 8th would be an Ibis: <http://www.ibishotel.com/gbl/hotel-0715-ibis-calais/index.shtml>



**CAR PARK:** In front of the B&B Hotel is a roundabout. On the opposite side to the B&B Hotel is a McDonalds with a couple of bars (the somewhat unmissable Australian Bar and Le Temple Club) next to it. There is ample parking there. **Assemble in this car park** (entrance is behind the Australian Bar on *Rue Gutenberg*) in front of the bars/McDonalds **from 9:00 am onwards for pictures and introductions before 9:30 am departure.** (It's a little 'lacking in character' around there, I know, but it is easy to find and very close to the A16 junction)

### **DIRECTIONS:**

From the car park: Turn left onto Rue Gutenberg > enter the roundabout take 3rd exit (left), continue to right fork slip road onto A16 (SW) (non-péage) > Boulogne-sur-Mer. Take N1/D901 > Montreuil > Nampont > N1/D1001 > ABBEVILLE. Join A28 > Neufchâtel-en-Bray (*good stop for fuel, food*) on D928 > ROUEN here join short section of ring road (motorway/tunnel) N15/D6015 (E of Seine) > D7 > Elbeuf > D840 > Le Neubourg > Ste.-Colombe-la-Commanderie N13/D613 > EVREUX > N2154/N154 (S) > Nonancourt > N12 > DREUX. Follow route (S) of Dreux > N154 CHARTRES > after junction for Poisvilliers, continue on N154 and take left (E) route, where N154 splits > Av. del la Paix > Continue through Chartres; Rue du Bourgeneuf,

Rue du Faubourg La Grappe, R. d'Allones > to junction with N123/A11/E50 > cross onto N154 exiting Chartres through suburb of Bonville > At Allaines-Mervilliers route becomes D954 > Artenay, turn right onto D2020 and after approx. 16kms turn right onto the ramp D2020/Montargis/Neuville-aux-Bois/Fleury-les-Aubrais-Centre > merge onto Tangentielle Ouest, continue onto Tangentielle **Est** > continue onto N60/D2060 > After c.24kms, exit onto D952 toward Nevers/Auxerre/Châteauneuf-sur-Loire/Gien > after a further 35kms at a roundabout take the 4th exit, keeping on the D952 to GIEN. Take the D940 over the river Loire (D940 Route de Bourges) > continue on D940 for a couple of kms and at the sign to Le Bois du Bardalet turn left. Follow road and signs to the CAMPSITE LES BOIS DU BARDELET.

**CAMPING:**

<http://www.bardelet.com>

**Alternative hotel option:**

<http://www.sanotel.fr>

---

**DAY TWO**

**Thursday, May 10th**

**Suggested start time: 9:00 am**

**Distance: Approx 245 miles, 7hrs**

**DIRECTIONS:**

From camp site: rejoin D940; turning right onto it, direction GIEN > at roundabout take 4th exit Rue Cunion > turn right onto D951 > continue on D951, ensuring you don't join the D752 > continue to Châtillon-sur-Loire where you have to turn left to stay on the D951 > becomes the D751 approaching Belleville-sur-Loire, continue on this road until Les Fouchards where, at the roundabout take the 2nd exit (D955) > Saint-Satur > at the roundabout, take the 2nd exit onto Rue de la Gare du Canal (D9) > Continue onto Rue du Canal/Route du Canal (D920) > Continue to follow D920 > at Herry, slight left onto Rue de l'Abreuvoir (D7) > Continue to follow D7, continue onto Route des Grenouilles/D45E > follow D45E > D45, Beffes > at Cours-les-Barres join D920 > D45 > Cuffy > (SW) of NEVERS > D976 > crossing the A77/N7 > Sermoise-sur-Loire, join D13 (S) > Chevenon, take D200 across canal and river > Imphy. Join D981(S) > D979 (@Decize) > bypass Bourbon-Lancy > Digoin (D979). Take (E) direction joining D982, crossing N79/E62 > St. Yan (aeroport) > Marcigny > Iguerande > Pouilly-sous-Charlieu (désignation changes to D482) > ROANNE. Entering Roanne, cross N7, continue on Rue de Charlieu, bearing left follow route over river > Le Coteau, bear right to pass the railway station (Gare SNCF) aim to get onto D207 > cross under N7 @ L'Hôpital-sur-Rhins (still D207) >

junction with D9 take D907 (S) > large round about > take road under autoroute to Ventranges > D282 Neulise. Continue on D282 (pass junction with D38) continue (Rue de la Poste/Route du Forez) > Junction 73 N82 (S) N82 becomes D1082 > Balbigny > FEURS (D1082 detours (W) around town) > Montrond-les-Bains > Veauche > (NW) of ST.-ETIENNE > junction with D201/D1498. Take D201 (S), crossing A72/E70 > continue on D201(districts Villars/Saint-Genest-Lerpt) > Join N88 (E) > exit N88 Junction > Rue P. de Vivié/D1082 > Planfoy > Bourg-Argental > take route to Annonay; D1082 designation change (?) to D820 > junction with D206, continue on D820 direction Davézieux > before Davézieux follow D820, direction Serrières/Sablons > cross river Rhône > Sablons take D1082 (Route des Alpes) > N7 (N) as approaching J12 A7/E15 > continue (N) into Roussillon; @ Jardin de la Paix, take Ave. Jean Jaures (D134) (NE) > Poncin > at junction with D131 turn right (S) > D131 (Route de Vienne) to 'LE BONTEMPS' Vernioz 38150 CAMPING

**CAMPING:**

<http://www.camping-lebontemps.com/en/3/camping>

**Alternative Hotel options:**

[http://www.hotelscombined.com/Hotel/Hotel\\_Balladins\\_Lyon\\_Chanas.htm](http://www.hotelscombined.com/Hotel/Hotel_Balladins_Lyon_Chanas.htm)

<http://www.campanile.com/hotel/en/index.aspx>

---

**DAY THREE**

**Friday, May 11th**

**Suggested start time: 10:00 am**

**Distance: Approx 135 miles, 5 hrs**

**DIRECTIONS:**

From camp site: Go (S) to join D51@ Agnin, cross D51 > D519, turn right (W) > cross A7 > round about (Chanas). Take N7 (Route de Marseille) (S) > St. Vallier > Erôme > Tain l'Hermitage > VALANCE. At the roundabout (N) side of Valance take N7 ring road (E of Valance) > continue around N7 (becomes N7/E713) Exit J33 D538a (Route de Crest) (S) direction Crest > Beaumont- lès- Valance > Montmeyran > at crossroads follow D538 (S) direction Crest > cross roundabout, follow D538 over river. Join D104 (E) (turn left) direction Saillans > designation changes to D164 > D164 changes to D93 into SAILLANS > leaving Saillans, cross river (la Drôme) continue direction Vercheny/Die but after approx 3.5kms take the right turn (bridge over river) D135 (signposted Espenel etc.), take turn > St. Benoit-en-Diois, after approx 2 miles/3.5 kms road forks. Take left turn: D595 > Pennes-le-Sec > Take next fork to the left (NE) to Col De Pennes direction Barnave > take right D140 Jansac > D93 take

(S) right turn at junction > Luc-en-Diois. Follow D93 to (NE) left, direction Beaurières/la Beaume, at fork take right (D93) to Col De Cabre > D93 now D993 (will become D994a) > Aspres-sur-Buëch, cross D1075/E712 and join D 994. Turn left (NE) > Veynes > GAP, enter on D994 (Av. Guillaume Farel/Pl. du Revelly) join N85/N94 junction and take N94 (Av. Emile Didier) > roundabout, continue N94 (Av. d'Embrun). Leave GAP on the N94 direction Charges > follow N94 bypassing Charges to the (S) > c.2.5kms later look for signs to 'Camping le Serre du lac' or, if not apparent, immediately after a blue sign "BATEAU PROMENADE Le Serre Ponçon' there is a slip road leading off the the right, which you can see climbs slightly away from the level of the main road. Take this exit and this road leads to the campsite. Note as well as a limited number of tent pitches the mobile homes and chalets will be rented out on a daily basis for a very reasonable sum.

**CAMPING:**

<http://www.campingleserredulac.com>

**Alternative Hotel option:**

Hotel Pre Vert, <http://www.hotel-prevert-gap.federal-hotel.com>

---

**DAY FOUR**

**Saturday, May 12th**

**At Camp. Optional trip TBA**

---

**DAY FIVE**

**Sunday, May 13th**

**Suggested start time: 8:40 am**

**Distance: Approx (A)170 miles, 7hrs (B) 190 miles 7.5hrs\***

**\*NOTE REGARDING COLS - 'Ouverts' :) ou 'Fermés' :(**

Because snow does what it likes and sometimes hangs around a bit longer than we would want, we cannot be sure as to the accessibility of some of the Cols. The ones in question are the Col d'Izoard, Col du Galibier, Col du Glandon, Col de la Croix de Fer and the Col de la Madeleine. Constant checking of <http://www.infotrafic.com/home.php> will help but we must be prepared for the eventuality that some or none of the Cols will be open. This will not spoil the adventure but will mean we will need to refocus our attention in other directions.

So, with this in mind we have several options outlined in the following route descriptions.

## **SUMMARY**

**If the Col d'Izoard is closed** - as it now seems likely - continue along the N94 to Briançon. This is completely straightforward if a tad disappointing. However here it becomes interesting.

**If Option A, the Col du Galibier is closed, but the Col du Glandon is open** then follow **Option B** below. However, **if the Col du Glandon is closed**, then at Briançon we are faced with a dilemma. We will rely upon up-to-date reports and local intelligence (Jaba) but it could be a good idea to head East rather than West (the road to Grenoble).

Subject to conditions, **Option C** becomes: **drive to Grenoble and swing north there**, driving on to Albertville on the D523. **Option D** however takes us **into Italy**; we leave Briançon on the N94 then into Italy (road becomes SS24) to Oulx, and T4 to Bardonecchia and the TUNNEL DU FRÉJUS. This is a TOLL tunnel of around 8 mile in length (cost: Euro 39.40 or approx £35). The choice is clearly up to participants but it does mean arriving in France at Modane, allowing teams to join the D1006 to St. Jean-de-Maurienne and thus get us 'back on track'.

OK, what about the next part of the route which as originally planned, would take us up over the **Col de la Madeleine? If that route is closed too**, it's a simple case of continuing to ALBERTVILLE and from there, joining the suggested route - if clear (otherwise stick to the D1212 > MEGÈVE) once again on to our overnight on the 13th.

Anyway, we'll discuss this at the time but it does help to know there are options. At the moment I have not suggested an alternative route avoiding Briançon, instead heading north of Gap. Individual teams can debate this at the time.

So back to the morning of 13th May:

## **DIRECTIONS:**

From camp site: Rejoin N94 (E) > Embrun > Saint-Clément-sur-Durance > on approach to Mont-Daupin take (E) right turn at roundabout D902a direction Guillestre > exit town on D902 (Route du Queyras) (NE) > approx. 10 miles/16kms along D902 sharp left D902 direction Briançon > Arvieux > Col d'Izoard (beware cyclists) > Cervières > enter BRIANÇON on D902, at round about take 'Toutes Directions' exit and bear to the right (pass a large building), turn right over river, continue to Av. de la République (D2) (NE) turn right, bear round to left (Av. de la Liberation) > Junction with N94, turn (NW) left, direction Grenoble/Serre Chevalier/Col du Lautaret > at junction bear left to roundabout, take right exit, D994F (signposted

Grenoble) > joined by D1091 from right, continue on D1091 (Route de Grenoble) > Le Monétier > Col du Lautaret

• **OPTION A (If Col du Galibier Ouvert/OPEN)\*\***

At Col du Lautaret, take D 902 (N), Col du Galibier > Valloire > St. Michel-de-Maurienne > cross A43/E70 and turn (NW) left onto the D1006 signposted Albertville > La Chambre (D1006), at roundabout go right, (direction La Chambre/St. Avre) D213....>

• **OPTION B (Col du Galibier Fermé/CLOSED, but Col du Glandon Ouvert/OPEN)\*\***

Continue (W) at Col du Lautaret on D1091 > La Grave > pass Lac du Chambon (N) side, through tunnel > Le Freney-d'Oisans > keep on D1091 > bypass Le Bourg-d'Oisan, continue (NNW) on very straight D1091 > Les Sables, (many junctions with small side roads in a grid pattern along here) > Rochetallée take turn (E) D526 direction Allemont, signposted Col du Glandon > cross iron bridge > turn (SE) D44 signposted Villard-Reculas > Bear left onto D44C (Oz- en- Oisans/ Vaujany/Col du Glandon) > pass dam/crossing on left > continue D526 > Col du Glandon > Saint-Colomban-des-Villards > La Chambre (posse D927 designation now) > cross A43/E70 > turn right at round about D927 (A43/Ste.-Marie-de-Cuines) > turn left at round about D927 (Turin/Chambery), cross bridge, at roundabout go over, (direction La Chambre/St. Avre) D213....>

• **OPTION C (If Cols above closed) Route Grenoble:**

Continue (W) on D1091 > Vizille, briefly join N85 then turn right onto D5 (Route Napoleon and head (N) on D5 to Eybens. Turn right onto D 269 Poisat > continue a while to junction following sign to Gières > join D523 to Pontcharra > D925 to La Rochette > Bourgneuf, take right > ALBERTVILLE....

• **OPTION D (If Cols above closed) Route Tunnel de Fréjus:**

At BRIANÇON: Take (E) N94 > Montgenèvre > Italian Border > SS24 Claviere > - take exit A32 TORINO-BARDONECCHIA T4 - FREJUS > Arrive in France at Modane > take D1006 dir. Albertville (if Col de la Madeleine open use route below, otherwise continue to ALBERTVILLE....

**\*\*Where OPTIONS A and B join:**

... On D213, cross railway bridge, pass La Gare > after approx 600m turn right onto D213 direction St.-Martin-sur-la-Chambre > Stay on D213 (avoid D99 on right) > Col de la Madeleine > continue (avoid left fork to Bonneval) to D213 descent to junction with D97 > turn (S) right > turn (E) left onto D94 crossing river > (Gare: Notre-Dame-De-Briançon) > turn onto Junction 37 N90 to ALBERTVILLE....

AT ALBERTVILLE: (see above options)

.... Exit Junction 30 D1212, at roundabout straight over to Centre-ville > over junction, > keep going, follow signs to Annecy/Ugine > at a traffic lights junction and assuming conditions allow, take (E) right turn direction over bridge > take D925 (Venthon) turn to left > continue on D925 out of ALBERTVILLE (avoid right fork to La Chenat/Marolland) > keep right at junction with D67 > turn left onto D123 signposted Villard-sur-Doron/Bisanne 1500 > continue on D123 > turn left at junction with D218b > Col des Saïses > follow signs to Notre-Dame-de-Bellecombe > follow D218b direction Flumet/Megève > D218c to Megève, join D1212 direction Chamonix > Prazsur- Arly >

MEGÈVE D1212 > 'Demi-Quartier' (Route de Sallanches) > D1212, at roundabout take first exit (right) D909 signed Chamonix/St. Gervais > Le Frenay > Le Neyret > cross bridge into ST. GERVAIS- LES- BAINS; follow road round to left (D909) > at small roundabout take D902 (Genève/Chamonix), continue following D902 (bendy) to Les Plagnes > follow road, around sweeping hairpin down into valley > at roundabout take right exit signposted D1205 Chamonix, Passy-chedde/Passy-Zones d'Activities (for future ref ZA) > at L'Abbaye, keep left on D1205, signposted Passy (ZA) > pass under autoroute > bear left and road becomes D43 > at roundabout take 3rd exit signposted D43 Passy - chef Eu(?)/Plateau d'Asy/Servoz > follow D43, take right turn, D13 (Servoz/Chamonix) > take sharp left, almost doubling back, signposted Le Perry etc./La Combe/Maffrey > at Maffrey continue on Route de Maffrey, Rue d'Anterne > hairpin bend > rue de l'Eglise; follow road round to right and rejoin D43 > turn right (pass Boulangerie du Mont Blanc) > continue on main road and after several tight bends take Chemin du Fontenay (on the left) to the overnight stop of Le Fontenay (assuming you have booked)...

**HOTEL:**

[http://www.tripadvisor.in/Hotel\\_Review-g1194572-d1798327-Reviews-Le\\_Fontenay-Passy\\_Haute\\_Savoie\\_Rhone\\_Alpes.html](http://www.tripadvisor.in/Hotel_Review-g1194572-d1798327-Reviews-Le_Fontenay-Passy_Haute_Savoie_Rhone_Alpes.html)

**Alternative hotel:**

[http://www.tripadvisor.in/Hotel\\_Review-g562747-d735027-Reviews-Hotel\\_Restaurant\\_Val\\_d\\_Este-St\\_Gervais\\_les\\_Bains\\_Haute\\_Savoie\\_Rhone\\_Alpes.html](http://www.tripadvisor.in/Hotel_Review-g562747-d735027-Reviews-Hotel_Restaurant_Val_d_Este-St_Gervais_les_Bains_Haute_Savoie_Rhone_Alpes.html)

**Camping option:**

<http://www.campingdesecureuils.fr/?lang=enc.?17pitch>.

---

## **DAY SIX**

**Monday, May 14th**

**Suggested start time: 9:20 am**

**Distance: Approx 180 miles, 6hrs**

### **NOTE:**

Regarding passes/roads: It is possible that some of the routes outlined below will be impassable due to late-melting snow/land slips etc. So, it is important to have a map and Sat Nav available if possible, as well as being in possession of the relevant VIGNETTE giving the option of motorway driving. Clearly, should many teams have Mobiles and CB radios all teams should be able to pass information about closures etc. should it be necessary.

### **DIRECTIONS:**

Retrace route to Maffrey > La Motte (D13) > Les Soudans, route to Servoz > Follow signs to Servoz > SERVOZ > follow D13 through Servoz > N205/E25, direction Chamonix Mt. Blanc > D1506 towards the Swiss border > Vallorcine, CROSS INTO SWITZERLAND > Trient, Col de la Forclaz > MARTIGNY follow sign to Centre Ville (if you see one) and take Av. du Grand Saint-Bernard into the town, head towards the Gare (Av. de la Gare), turn left (N) heading up Rue du Lèman > Vernayaz > Route Cantonale (route 21?), Evionnaz, but cross over the A9/E27 there still on the route 21 > head N with the Autoroute on the left > at Les Emonets/Bols-noir just before Saint-Maurice the route crosses the Autoroute again and as it enters becomes Av. du Simplon/Route du Lèman > through the town and cross the autoroute again, passing J19 exit > Becomes route 9, through the Eastern part of Massongex/Bex > direction Aigle but pay close attention as need to take road to Ollon > get on the road to Les Diablerets/Ormont-Dessus\* (\*be careful there seem to be two places with this name close to each other!) via Col de la Croix . At Les Diablerets/Ormont-Dessus, take the Route du Pillon (Col du Pillon) to Gsteig > Gstaad > Saanen > follow main route 11 (?) East to Zweisimmen > continue to Boltigen > Oberwil im Simmental > Därstetten > Wimmis, do not take A6 but keep on route 11 to the junction at Spiez > keep on the same road, and head South towards INTERLAKEN > Leissigen > Därlingen > avoid A8 and, at junction complex, turn (NNW) left over the Kanal/waterway(s), continue along straight road (Wiessenaustrasse after approx 900m, turn (W) left at the roundabout, direction Gunten. (Note red sign for Thun Gunten Manorfarm). Continue along Seestrasse > Neuhaus > pass Camping Alpenblick (our alternative camping venue) > cross small bridge, the campsite, MANOR FARM is a couple of hundred metres on the left.

### **CAMPING:**

[http://www.eurocampindependent.co.uk/campsites/overview.cfm?mc=92&region/D=379\\_380\\_381](http://www.eurocampindependent.co.uk/campsites/overview.cfm?mc=92&region/D=379_380_381)

**Camping option:**

<http://www.lazyrancho.ch/pages/english/welcome.php>

**Alternative Hotel option:**

<http://www.budgethotel-beatenberg.ch>

---

**DAY SEVEN****Tuesday, May 15th****Suggested start time: c. 9:00 am****Distance: Approx 210 miles, 7.5 hrs****DIRECTIONS:**

From camp site: Rejoin Seestrasse - turning left (NNW) direction Thun > Hilterfingen > Thun. At roundabout take direction Bern (Bernstrasse) (route 6) > Wichtrach > Münsingen > Allmendigen > BERN. Entering Bern on Muristrasse, continue to junction with inner ring road (Ostring/Kirchenfeldstrasse). Turn (E) right onto Ostring (6) > interchange with A6 motorway. Turn (NW), left onto Laubeggstrasse and continue (6) to Papiermühlestrasse. Head (NNE) and, as crossing A6, bear left onto Worblaufenstrasse > follow (W) and cross interchange, joining Tiefenaustrasse (1). Go (N) left at roundabout/junction. This becomes Bernstrasse (6), continue and just before Münchenbuchsee (but after the Lysstrasse joins from the (N) right) take the (N) right turn to Rapperswill > cross the A6 and continue > Rapperswill Schnottwil > Büren. Cross river (N) taking Jurastrasse (N) > Lengnau (direction Grenchen). Take (N) left road (as starting to exit Lengnau) Oelestrasse. Follow this (sharp left, sharp right) road round to (E) right (Allerheiligenstrasse) > Pass sign Grenchen > at junction with Schmelzstrasse (blue ETA office block) turn (N) left (Bergstrasse) (brown Grenchenberg sign). Take Grenchenberg road > Untergrenchenberg > Court, take right turn (direction Moutier) > La Fenatte > Moutier (6) > Roches > Delémont. Continue round on the road (6) until Develier, take the (N) road to Bourignon > Lucelle > CROSS INTO FRANCE > Road becomes D432 (briefly D41 then back to D432) > ALTKIRCH.

Enter Altkirch on the Route de Carspach, cross roundabout, turn right at junction with Rue de l'Ill and continue along there (close to la Gare) to intersection with D419 (roundabout). Turn (NW) left onto D419 (pass a cemetery on right and factory on left) Route de Thann > Take the D466 (right turn) (signposted Autoroute A36, Aspach, Thann...) > Progress along this road (the idea is to keep on the D466, but it won't necessarily be clear) > continue (passing a Citroën dealership) > cross the D18 > cross D19 and follow road to Bernwiller > exit Bernwiller

(still D466) Rue Louis Werner. Approaching Burnhaupt-le-Haut keep on D466 (2nd right at roundabout, Citroën dealership/service centre) (signpost: A36, Mulhouse) > intersection with A36/E60, go around roundabout taking exit signposted Belfort péage, Colmar... D83 > cross over A36/E60 and continue (NNW) taking the first main exit, signposted Belfort, Masevaux, Burnhaupt (D483) > cross the D83 and head (W) > take the first main exit (right) off the roundabout, signposted Masevaux, Guevenheim (back on the D466 now), continue to MASEVAUX, drive straight through, follow sign to Ballon d'Alsace > Oberbruck, Dolleren > Keep to the main route (D466), but take the D465 turning on the (N) right > continue on D465, following signs to: *Col du Ballon*, Jumenterie, Saint-Maurice-sur Moselle. At Saint-Maurice-sur Moselle, turn (W) on to the N66/E512 to EPINAL.

**NOTE:**

Depending on time, it is possible to take N66 and the N57 all the way to Epinal. However, time/weather permitting the following option exists: At the intersection, at the far side of Remiremont, do not exit direction Epinal (N57) but continue direction VESOUL. Follow over the N57, turning back through over 180 degrees to head (SW) on the N57 > take the next exit D157 Remiremont/St. Nabord (centre) > follow sign: Vesoul, Plombières... > take D34 Raon aux Bois > continue to follow D34 (it becomes Route d'Epinal, then Route de Plombières (briefly) and then Rue de la Croix Georges, entering Hadol Haute. Here, join the D12 (now back to Route d'Epinal) > Le Roulier > Rainjumenil > Dinozé, where the D12 turns (NW) left, transforming to the D157 (Rue Neuve Grange).

Continue to Epinal on the D157: The IBIS EPINAL CENTRE VILLE HOTEL is the destination - as the D157 (now Rue de Remiremont), then Rue d'Alsace continues follow it until the turn to the right for crossing the river(s). Cross over the bridge(s) and turn left at the other side, continue along the river and when the next bridge comes up on the left, take it. The IBIS is on the other side (21, Quai Marechal de Contades). **The end of event will take place here from 7:30 pm.**

**HOTEL (no camping option offered):**

Ibis Epinal Centre Ville hotel: <http://www.ibishotel.com/gb/hotel-0890-ibis-epinal-centre-ville/index.shtml>

---

**NOTE:**

*Many will be travelling back to the UK from here (and that is a distance of 360+ miles, so a stop on the night of Wednesday 16th May, in France is probably worth planning.*

With this in mind, here is a suggested '**CHALLENGE PLUS**' two-day supplement:

## **DAY EIGHT (OPTION)**

**Wednesday, May 16th**

**Distance: Approx 185 miles, 6 hrs**

### ***DIRECTIONS:***

Epinal > Mirecourt > Vézelize > Colombey-les-Belles, on westwards to the River Marne and head North to Ligny-en-Barroise > Bar-le-Duc and following the route of the Voie Sacrée Nationale on to Verdun > Visit to Fort Douaumont

<http://www.wv1battlefields.co.uk/verdun/douaumont.html> > CHARLEVILLE-MÉZIÈRES.

### ***HOTEL:***

F1 Hotel: <http://www.accorhotels.com/gb/hotel-2226-formule-1-hotelf1-charleville-mezieres/index.shtml>

## **DAY NINE (OPTION)**

**Thursday, May 17th**

**Distance: Approx 185 miles, 5.5 hrs**

### ***DIRECTIONS:***

Cambrai > St. Omer

(visit <http://www.lacoupole-france.com/la-coupole-saint-omer.asp> if there's time) > CALAIS..