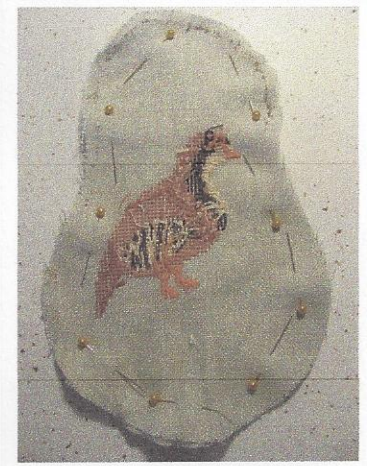
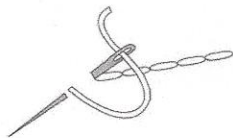


I hope you all enjoy making this pear pin cushion. It so much fun working with wool and making 3-D effects. I have plenty of photos for you to follow and have fun, May you have PEACE in your days
donna

Copyright © 2012 Donna Bayliss
York ME ,03909 USA



#1) Cross stitch the design onto the fabric and make sure you leave enough room all around the design to trace the pattern and center your design onto. Cut out 2 pieces of fabric and pin the right sides facing. Stitch approx $\frac{1}{4}$ inch in from the edges with a matching thread and a back stitch.



I forgot to do that and had to take it all apart and start over. **LEAVE ENOUGH SPACE OPEN AT THE BOTTOM TO TURN YOUR WORK RIGHT SIDE OUT**. I also used Fray Check to seal my edges because I did have to take it apart and start over. That made my edges fray. So I let that dry for a bit. If you do use Fray Check make sure that you only get it on the edges and that it does not run into the pincushion design.

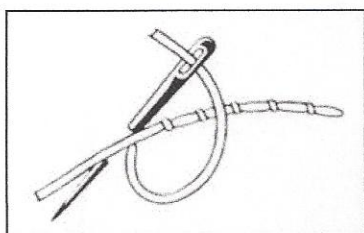
#2) The next step is to stuff the pin cushion with fiberfill and then sew closed. I used a whip stitch over the top, secured my thread but did not cut the thread.



I then made a running stitch around the bottom and pulled to gather and make the bottom of the pin cushion more of a circle pear shape. After you are happy with the bottom, secure the thread and cut.



#3) the next step is to draw the branches onto the pincushion. I did use a permanent marker but I suggest you use a marker that you can make it disappear with a light spray of water, just in case you are not happy with your layout. I used my cross stitch design as my reference. I made the branches go around the top and down one side, across the bottom, and I made more in the back of the pincushion. I then used a brown perle cotton with a couching stitch and outlined all of the branches. You do need a spot for inserting your needle into the pincushion so I used the top and bottom sections because these areas will be hidden later.

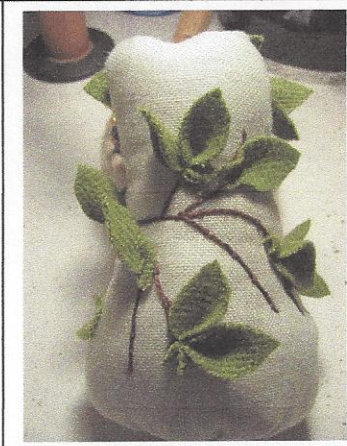
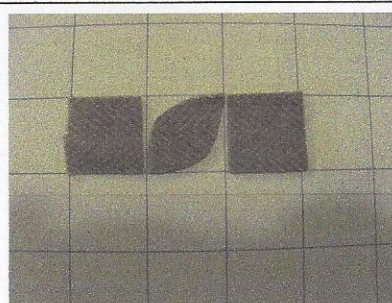
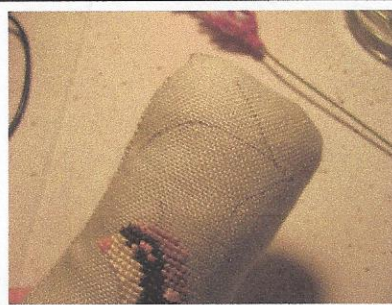


#4) The next step will be the leaves. I cut a long strip of 1 inch wide wool and then cut it into 1 inch squares. See the photo for cutting directions. I always cut free hand up one side of the square and then around the other side.

I then attach them to where ever I think they will look good. I make a stitch in the bottom of each leaf to make a little pucker and then attach them to the pincushion.

(DON'T FORGET YOU ARE RUNNING YOUR THREAD FROM THE TOP OR THE BOTTOM OF THE PINCUSHION)

I have provided photos for you of the front and back so you can see approx. placements. You can decide on your own about your placement because your branches will be in different places than mine.



#5) The next step is to cut the pears. I once again used a 1 x 1 inch square and folded the square in $\frac{1}{2}$ and cut around to make a pear shape. See photo for idea. I made 9 pears and gathered a stick from the yard. I broke the stick into small pieces for the top of the pears. Using my hot glue gun I dabbed a tiny bit of glue on one side and held the wool around the stick. Set aside to dry. See photo.

When making the larger leaves for the top of the pincushion or if you need larger leaves for the bottom, I cut a piece of wool 2 x 2 inches and cut it out the same way I did for the smaller leaves. With a larger stick I glued the leaf and stick together at one end only. This will be the top of your pear pincushion.

#6) You are now ready to apply the small wool pears to the pincushion. I just made sure I was happy with the location I was going to place them in and then it is just a dab of hot glue and add them in place. They stick out and look so dimensional. You will be inserting the top of the pear: the stick and large leaf next. I just put plenty of hot glue in the center of the top of the pincushion and inserted the stick with the leaf. **MAKE SURE YOU HOLD THIS DOWN INTO THE TOP AND SQUEEZE IT TOGETHER FOR A FEW MOMENTS.** You want an indentation in the top like it was a real pear.

You are ready to glue in onto a base. I used a small white urn that I purchased at a used store for a \$1.00. (What a deal☺) I added some larger wool leaves around the bottom of the pear because it did not fit just right into the center of the urn, so I cover up some spaces with the leaves. I hope you enjoy making this pincushion and if you would like to share any photos of your pincushion please email me at stitchbythebay@gmail.com

Thank you
donna

Copyright © 2012 Donna Bayliss
York ME ,03909 USA

