

SCALES: 1" = 80'
1" = 40'

SURVEYORS STATEMENT

THIS MAP CORRECTLY REPRESENTS A SURVEY MADE BY ME OR UNDER MY DIRECTION IN CONFORMANCE WITH THE REQUIREMENTS OF THE PROFESSIONAL LAND SURVEYORS ACT AT THE REQUEST OF CRAIG CROTTY IN JUNE OF 2011

JUNE 20 2011

PAUL M. PLUTAE L.S. 4722



BASIS OF BEARINGS

THE BEARINGS SHOWN HEREON ARE BASED ON THE BEARING OF N 64° 40' 03" E OF THE CENTERLINE OF MESA LILA ROAD AS SHOWN ON SAID TRACT NO. 14451

SURVEYORS NOTE / COMMENTS

THIS SURVEY IS FILED TO SHOW THE MONUMENTATION OF THE LANDS SHOWN, FOUND OR SET, AND METHOD OF ESTABLISHMENT OF THE LANDS AS REQUIRED BY SECTION 8762 (b) (1) (2) (3) (4) (5) OF THE PROFESSIONAL LAND SURVEYORS ACT.

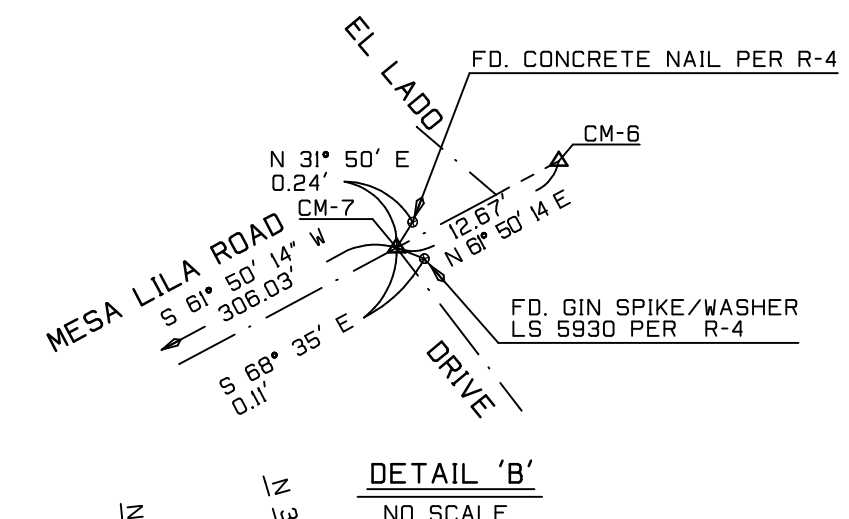
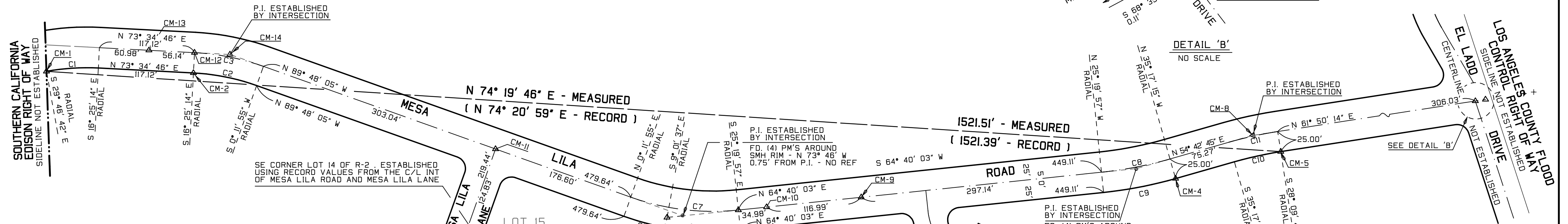
- △ - SET MONUMENTS AND PRIMARY CONTROL MONUMENTS AS NOTED.
- - OTHER NOTED SURVEY MONUMENTS THAT WERE NOT ACCEPTED
- ALL SET MONUMENTS TAGGED LS 4722 UNLESS NOTED OTHERWISE

COUNTY SURVEYORS STATEMENT

THIS MAP HAS BEEN EXAMINED IN ACCORDANCE WITH SECTION 8766 OF THE PROFESSIONAL LAND SURVEYORS ACT THIS

DAY OF _____ 2011

COUNTY SURVEYOR: _____
DEPUTY: _____



ACCEPTED MONUMENT TABLE

DESIGNATOR	DESCRIPTION	REFERENCE
CM-1	FD. 2" I.P. 'RE 1682' 6" DEEP WITH 4"x4" WOOD POST 1.7" TALL AND OFFSET 1.9" SE'LY MARKED 'SO. CAL. EDISON CO. PROP.'	R-1 AND R-3
CM-2	FD. 2" I.P. 'RE 1682' 6" DEEP ON DOWNSLOPE	R-1 AND R-3
CM-3	FD. 2" I.P. 'RE 1682' FLUSH AT TOP OF BANK	R-1, R-2 AND R-5
CM-4	FD. 2" I.P. 'RE 1682' - 6" DEEP	R-1 AND R-2
CM-5	FD. 2" I.P. 'RE 1682' - 1 FT. DEEP AT TOE OF SLOPE. R-8 HAS A NOTE THAT SAYS 'NO FD.' WHICH MAY HAVE BEEN PLACED BY OTHERS AFTER THE JAN 1960 DATE OF R-8	R-1, R-2 AND R-8
CM-6	FD. CITY OF GLENDALE ENGINEERING LEAD AND TAG IN TOP OF CURB. MATCHES THE POSITION OF THE L/T CL PROD. SHOWN ON R-7 BUT CROSSED OUT ON THE SAME	R-7
CM-7	FD. MAG NAIL AT APPARENT CENTERLINE INTERSECTION OF EL LADD DRIVE AND MESA LILA DRIVE.	NONE
CM-8	FD. CUT SPIKE S 28° E, 0.05' FROM P.I. 90° TO P.I. - HELD 30.81' AS CL TAN TO CM-5	R-8
CM-9	FD. SPIKE AND WASHER LS 7882 ON THE CENTERLINE OF MESA LILA ROAD	R-5
CM-11	FD. (4) CONC. NAIL TAN TIE STRADDLERS AROUND SEWER MAN HOLE COVER	R-9
CM-12	FD. CONC. NAIL ON CENTERLINE	NONE
CM-13	FD. CONC. NAIL ON CENTERLINE	NONE
CM-14	FD. (4) CONC. NAIL TAN TIE STRADDLERS AROUND SEWER MAN HOLE COVER	NONE
CM-15	FD. LEAD AND NAIL IN T.C ON TANGENT LINE 1.86' N'LY OF C/L P.I.	R-11
CM-16	FD. SPIKE AT C/L B.C. IN LIEU OF S&T	R-6 AND R-11
CM-17	FD. (4) CONC. NAIL TAN TIE STRADDLERS AROUND SEWER MAN HOLE COVER AT E.C	R-6 AND R-10
CM-18	FD. LEAD/NAIL AT C/L P.I.	R-6 AND R-10
CM-19	FD. 2" IRON PIPE FLUSH - LS 2832	R-6
CM-20	FD. COUNTY SURVEY MONUMENT - CONCRETE BLOCK WITH BRASS CAP	R-2, R-3, R-4, R-6
CM-21	FD. 2" I.P. 'RE 1682' - FLUSH	R-2
CM-22	FD. SPIKE AT C/L E.C. IN LIEU OF S&T	R-6 AND R-11

CURVE AND LINE TABLES

Curve	Δ	R	L	T
C1	13°21'28"	275.00'	64.11'	32.20'
C2	16°37'09"	274.20'	79.54'	40.05'
C3	16°37'09"	299.20'	86.79'	43.70'
C4	25°31'52"	326.44'	145.46'	73.96'
C5	9°13'32"	326.44'	52.56'	26.34'
C6	16°18'20"	326.44'	92.90'	46.77'
C7	25°31'52"	301.44'	134.32'	68.29'
C8	9°57'18"	494.55'	85.93'	43.07'
C9	9°57'18"	519.55'	90.27'	45.25'
C10	7°07'28"	469.95'	58.44'	29.26'
C11	7°07'28"	494.95'	61.54'	30.81'

Line	Direction	Distance
L1	S 89° 47' 28" E	20.00'
L2	S 89° 47' 28" E	50.00'
L3	N 64° 40' 03" E	40.00'
L4	N 9° 01' 37" W	15.00'

REFERENCES

R - 1	TRACT NO. 15486, M.B. 358 PGS. 35/36
R - 2	TRACT NO. 14451, M.B. 414 PGS. 11/12
R - 3	TRACT NO. 18175, M.B. 460 PG. 50
R - 4	PARCEL MAP GLN. NO. 1606, PMB 341 PGS 10-13
R - 5	RECORD OF SURVEY - RS 228 PG 70
R - 6	TRACT NO. 30047, M.B. 748 PGS. 43/44
R - 7	CITY OF GLENDALE F.B. - TB 77 PAGE 101
R - 8	CITY OF GLENDALE F.B. - 99 PAGE 16
R - 9	CITY OF GLENDALE F.B. - 77 PAGE 100
R - 10	CITY OF GLENDALE F.B. - TB 116 PAGE 83
R - 11	CITY OF GLENDALE F.B. - TB 116 PAGE 81

NOTE 'A'
FOUND 2" IRON PIPE 'RE 1682' PER R-1 AND R-2 90° TO STEEP DOWNSLOPE. SET 1" IRON PIPE AND TAG USING RECORD VALUES PER R-1 FROM CM-3 IN A CLOCKWISE DIRECTION. THE FOUND 2" IRON PIPE HAS MOVED DUE TO SLOPE FAILURE

